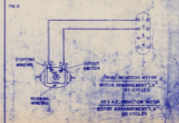
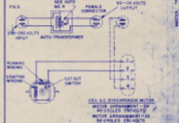
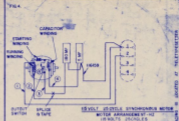
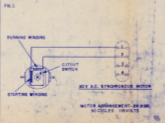
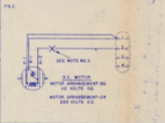
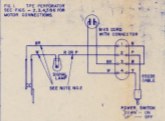


- NOTES
- WIRE COLOR CODE
 WHT BL SOLID COLOR OR TRACER
 IN WHITE WIRE.
- 1- YELLOW W-WHITE
 2-GREEN R-RED
 3-ORANGE S-SILVER
 BR-BROWN BK-BLACK
 BL-BLUE P-PURPLE WITH
 P-PURPLE-RED B-BLUE TRACER
 2. 26214 CABLE USED ON THE
 255, 252, 253, 254.
 26448 CABLE USED ON THE
 251.
 3. 50 VOLT DC MOTORS ONLY
 FOR VOLTAGES ABOVE 110 DC.
 200 50-20 OHM RESISTOR
 20-10 50-10 IN PARALLEL
 10-10 50-10 OHM SECTION
 20-10 50-20 OHM SECTION
 4. REFER TO SPECIFICATION T5-8017
 FOR TRANSFORMER AND MOTOR
 ADJUSTMENT FOR 250 VOLT
 40 CYCLE INPUT.
 5. REFER TO SPECIFICATION T5-8022
 FOR TRANSFORMER CONNECTIONS
 FOR 250 VOLTS 50 CYCLE INPUT.
 6. CONNECTORS ARE SHOWN FROM
 FRONT SIDE.



REVISION

02	4-4-59	2159
03	6-17-55	57926
04	1-21-54	59031
05	6-15-55	61414
06		
07		
08		

MOTOR ARRANGEMENTS AS LOCATED AT TELETYPESETTER

WD-1446

WIRING DIAGRAM
 TELETYPESETTER
 PERFORATOR AND
 MOTOR
 ARRANGEMENT

TPE 200 H-204

MOTOR
 ARRANGEMENT
 68L8, CR, OR, AT, 10L6, LF

DRAWN R.C.H. APPROVED
 DW70 T.A.

CHECKED L.C. BY
 FILE NO. 7-23-58-18

TELETYPESETTER
 CORPORATION