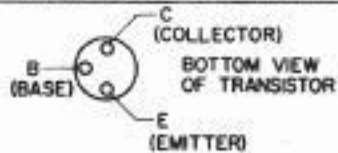
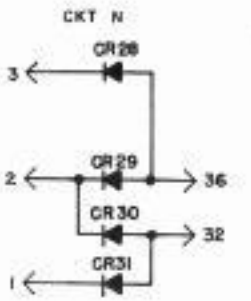
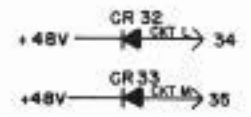
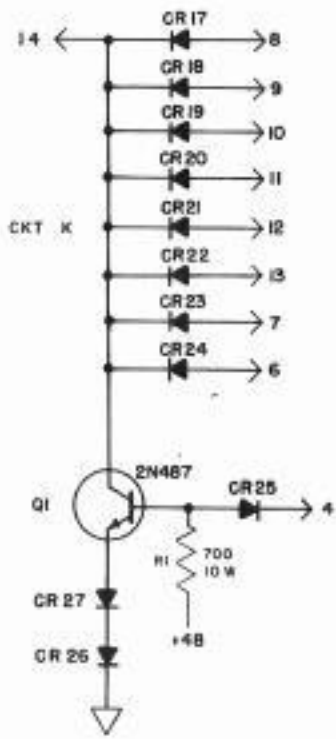
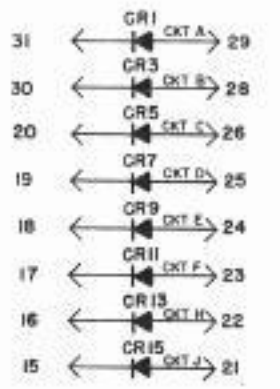
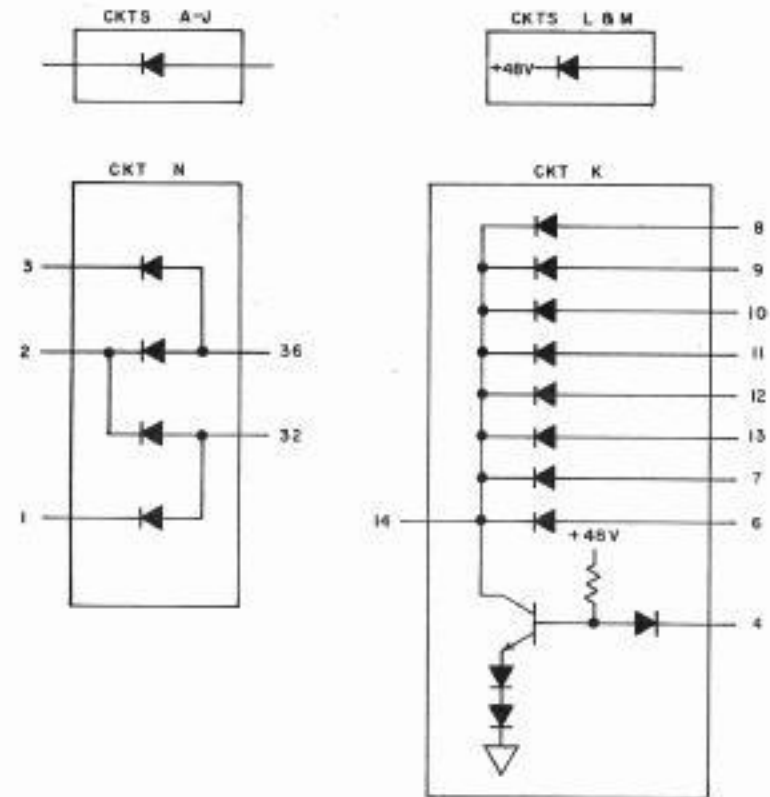


RAISE R1 700 OHM RESISTOR  
1/8" MIN. OFF SURFACE OF CARD.  
NOTE

REFER TO 6050WD FOR BASIC MARKING INFORMATION



SYMBOLS



CIRCUIT BOARD EC 582

REF DESG	TELETYPE PART NO	TOTAL QTY	NAME AND DESCRIPTION	LOCATING FUNCTION
CR1	177511	23	DIODE, 1N982	
CR2			SAME AS CR1	
CR5			" " "	
CR7			" " "	
CR9			" " "	
CR11			" " "	
CR12			" " "	
CR15			" " "	
CR17			" " "	
CR18			" " "	
CR19			" " "	
CR20			" " "	
CR21			" " "	
CR22			" " "	
CR23			" " "	
CR24			" " "	
CR25			" " "	
CR26	171541	2	DIODE, 1N1693	
CR27			SAME AS CR26	
CR28			SAME AS CR1	
CR29			" " "	
CR30			" " "	
CR31			" " "	
CR32			" " "	
CR33			" " "	
Q1	198035	1	TRANSISTOR	
	2609	1	WASHER, LOCK #10	ON TRANSISTOR STD
	125031	1	MJT, HEX. #10-32	" " "
	184095	1	TRANSIFAD	OVER TRANS. LEADS
R1	148507	1	RESISTOR, 700 OHMS 10W	
		1	STRAP #24 GA. BARE	
EC	198010	1	CIRCUIT CARD, ETCHED	
	60063M	3	SLEEVING	ON TRANSISTOR

177582

REVISIONS

ISSUE	DATE	AUTH. NO.
2	8-10-64	81749
3	2-12-65	81857
4	8-11-65	82019
5	8-16-66	82033

APPROVALS

R AND D	E OF M
<i>[Signature]</i>	<i>[Signature]</i>
E-NUMBER	
PROD. NO. 177582	
DATE 7-5-63	
RBD FILE 3-21484X	
DRAWN A.K.P.	CHKD.
ENGR. J.L.	APPD.

TELETYPE CORPORATION

177582