

A. C. GOVERNED MOTORS

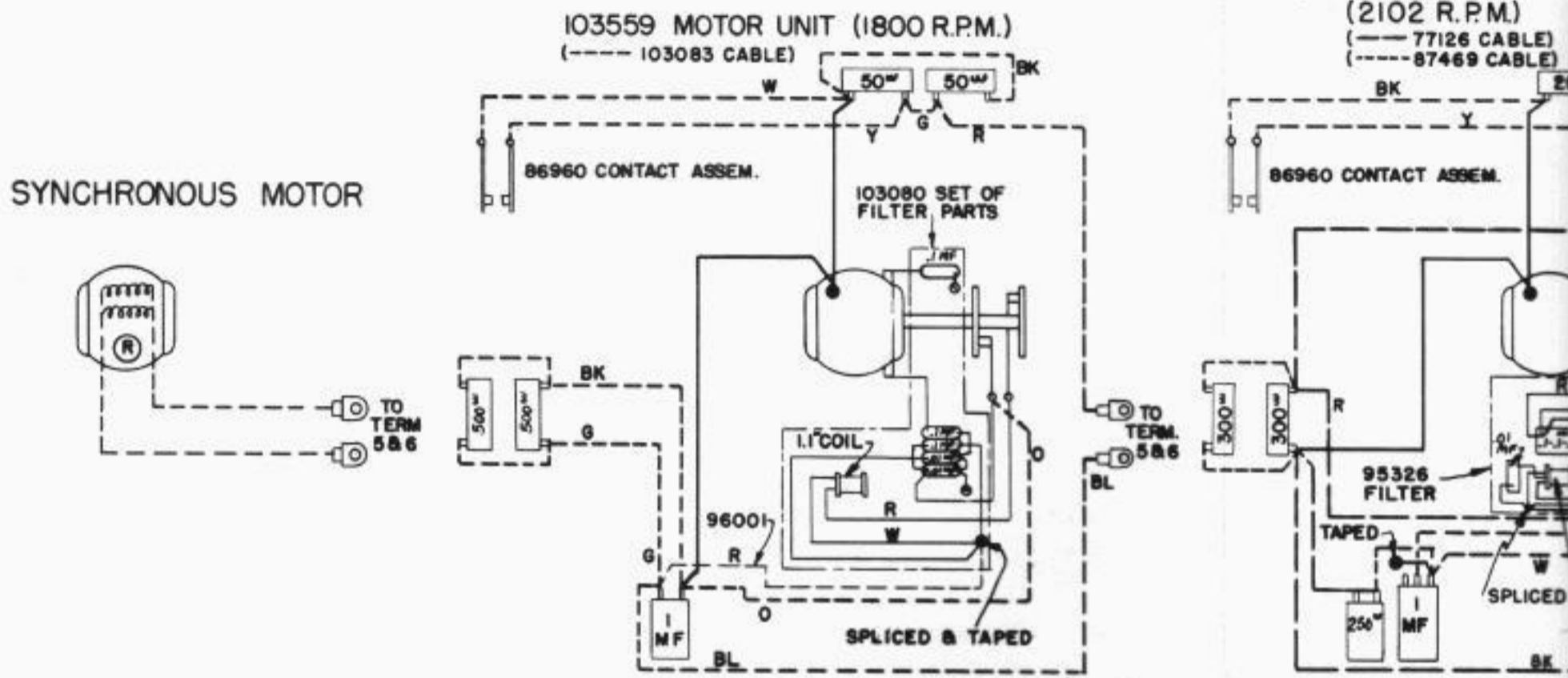


FIGURE 2

LOCATION OF 86960 CONTACT ASSEM. OPERATED BY ARMATURE EXTENSION ARM RELEASE MAGNET BOTH ENDS TAPED

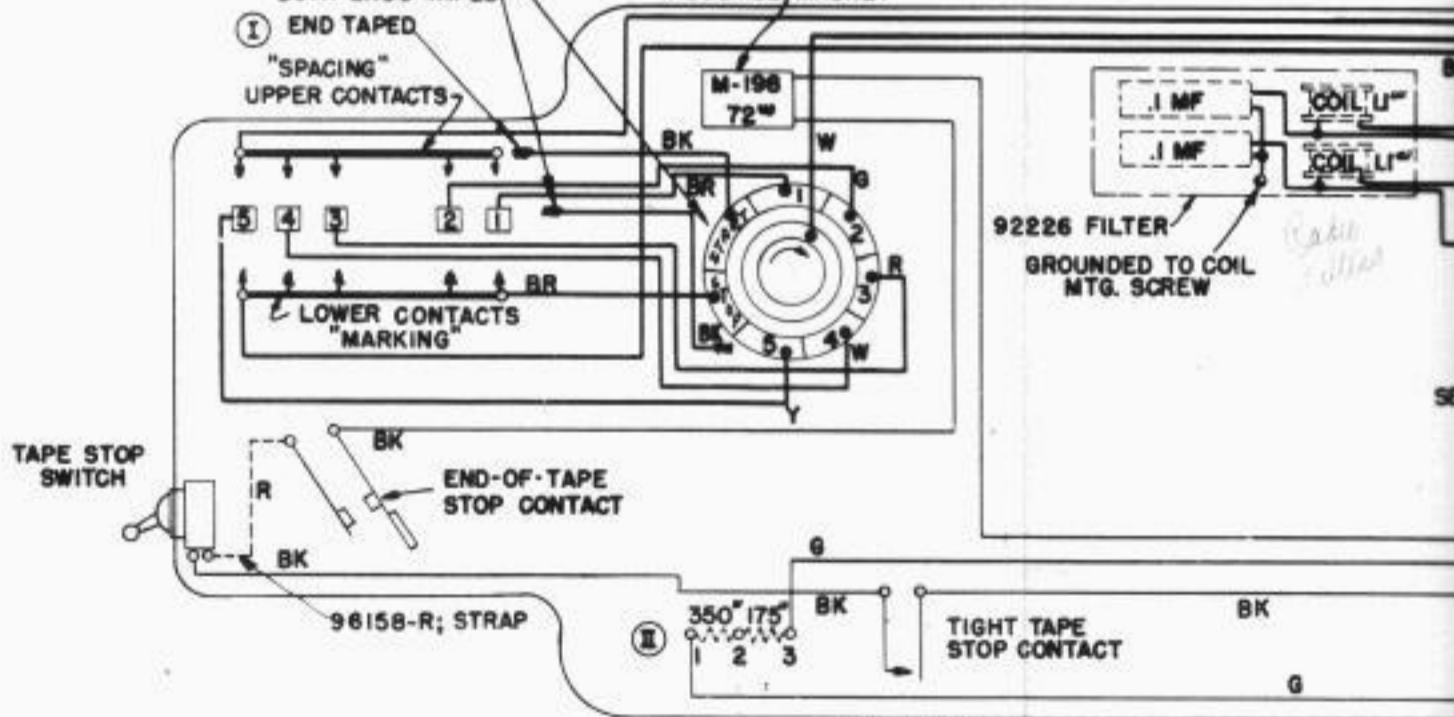


FIGURE 1

NOTES:

ALL WIRES "DELTABESTON" #18 COTTON COVERED FIXTURE, EXCEPT MOTOR LEADS.

UNITS SHOWN DOTTED ARE UNDERNEATH BASE.

--- THIN LINES INDICATE WIRES NOT IN CABLE.

(I) CONNECT LEAD WHEN POLAR SIGNALS ARE USED.

(II) WHEN SHIPPED, THE RELEASE MAGNET IS WIRED FOR 110 V.D.C. OPERATION OF MAGNET (WITHOUT STRAP), WHEN RELEASE MAGNET IS OPERATED ON 110 V. A.C. 50 OR 60 CYCLES RESISTOR TERMINALS 1 & 2 SHOULD BE STRAPPED. WHEN OPERATED ON 25 CYCLES, RESISTOR TERMINALS 2 & 3 SHOULD BE STRAPPED.

ASSOCIATED CABLE

- 77136
- 77135

A. C. GOVERNED MOTORS

REVISIONS

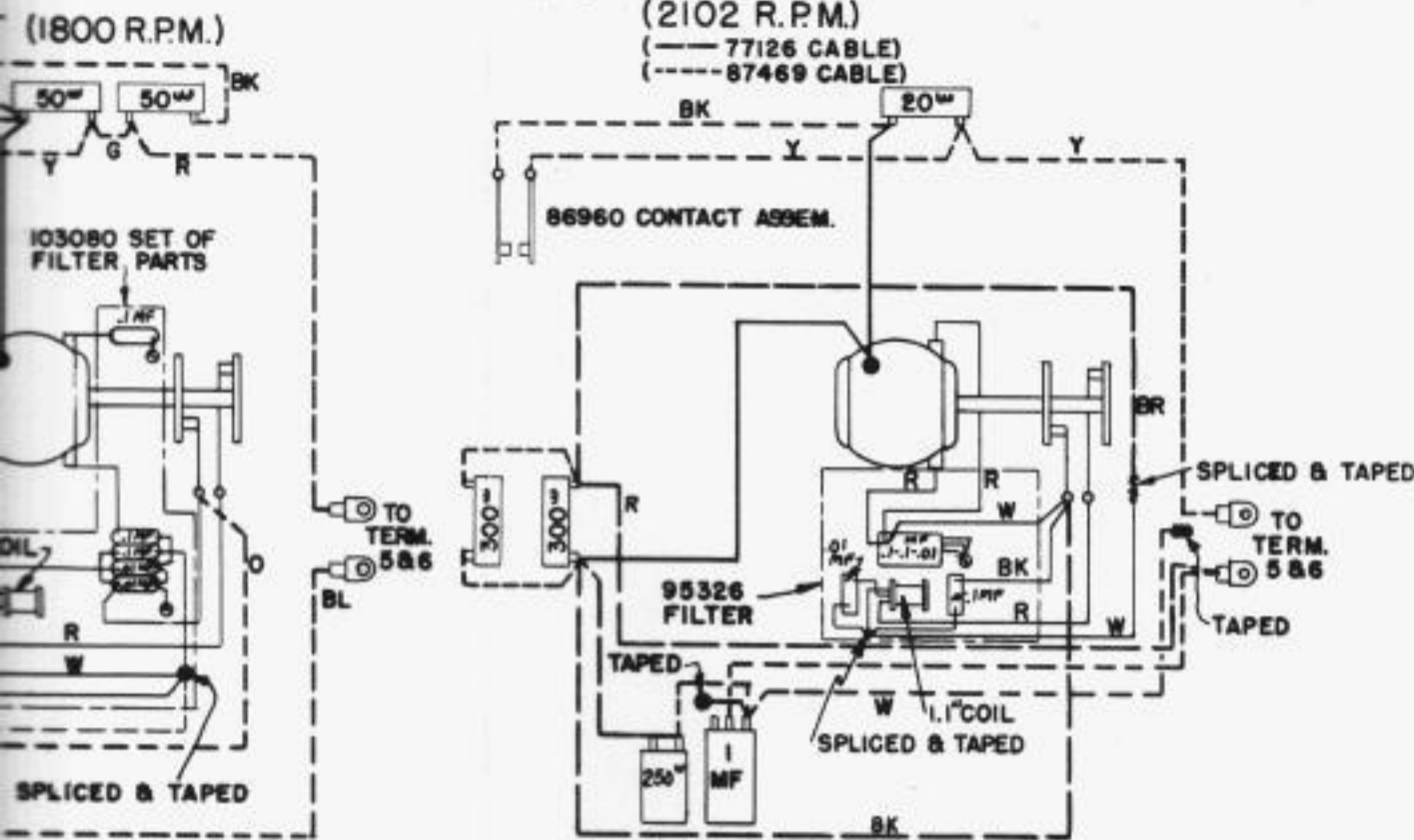


FIGURE 2

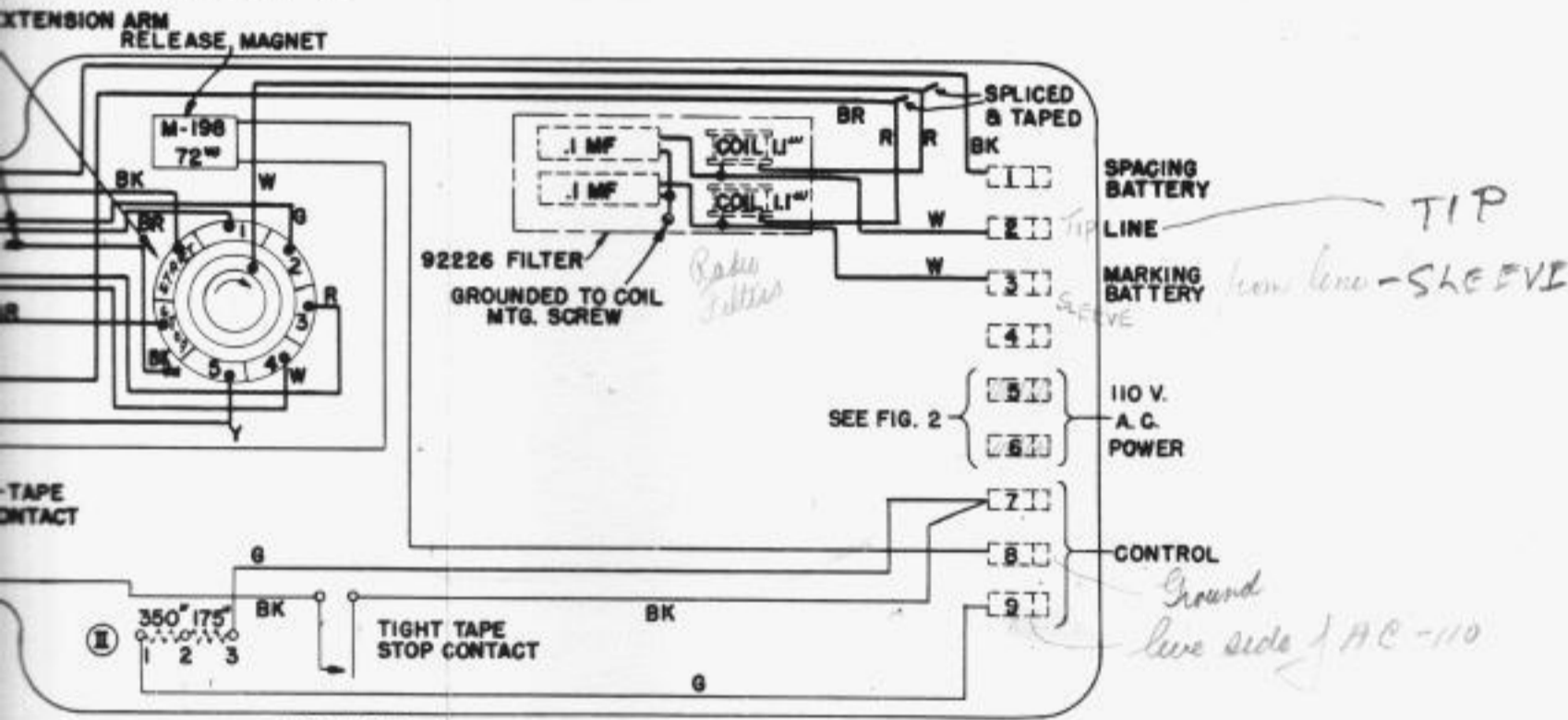


FIGURE 1

COTTON COVERED
 UNDERNEATH BASE.
 IS NOT IN CABLE.
 TERMINALS ARE USED.
 RELEASE MAGNET IS WIRED FOR 110 V.D.C. OPERATION OF
 RELEASE MAGNET IS OPERATED ON 110 V. A.C.
 TERMINALS 1 & 2 SHOULD BE STRAPPED.
 RESISTOR TERMINALS 2 & 3 SHOULD BE

ASSOCIATED CABLES	
—	77136
---	77135

COLOR CODE	
G	- GREEN
R	- RED
W	- WHITE
Y	- YELLOW
BR	- BROWN
BK	- BLACK
O	- ORANGE
BL	- BLUE

TELETYPE CORPORATION
WD-2084
9-25-41
TJ
TJ
WIRING DIAGRAM TRANSMITTER DISTRIBUTOR
XD71AJ XD71AB XD71BX XD71EQ
WITH 92226, 95326 AND 103080 FILTERS
DRAWN TRACED CHECKED ENG'R'D APPROVED

TIP
 LINE
 MARKING BATTERY
 110 V. A.C. POWER
 CONTROL
 Ground live side of AC-110

APPROVED E.S. [Signature]