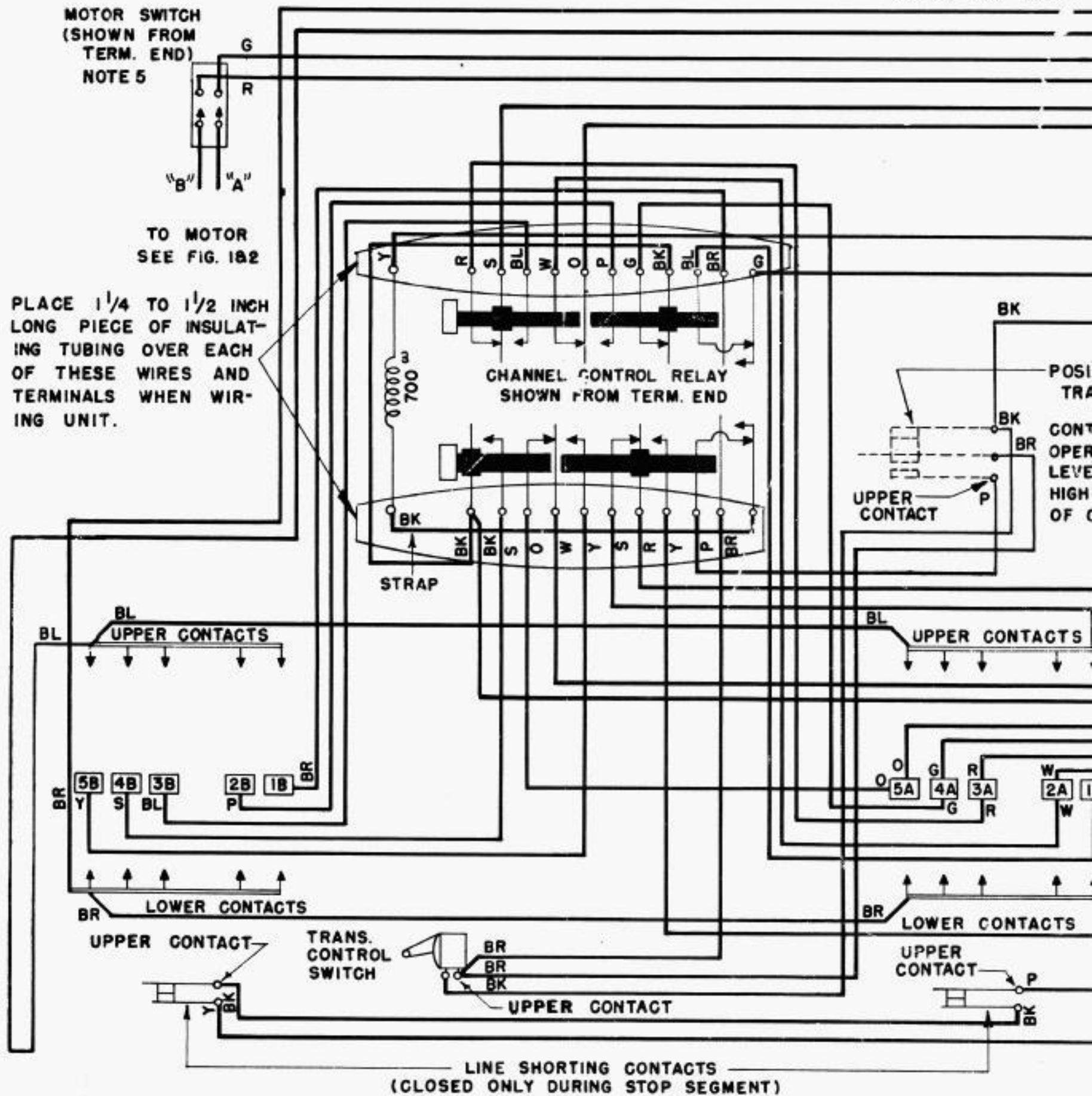
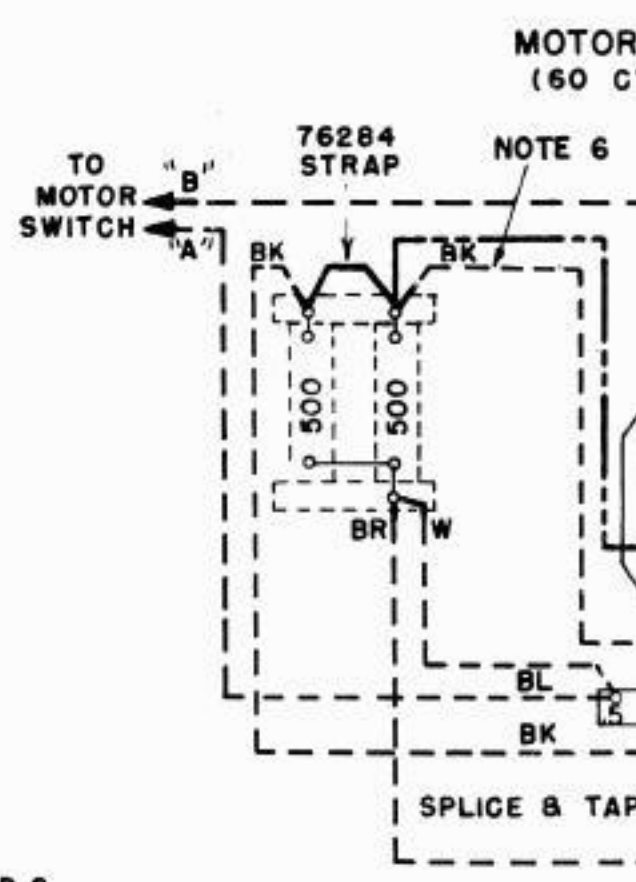
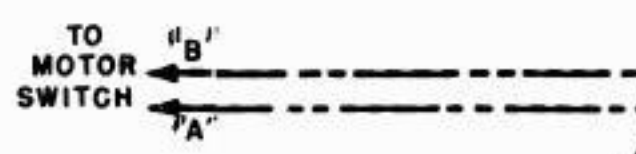
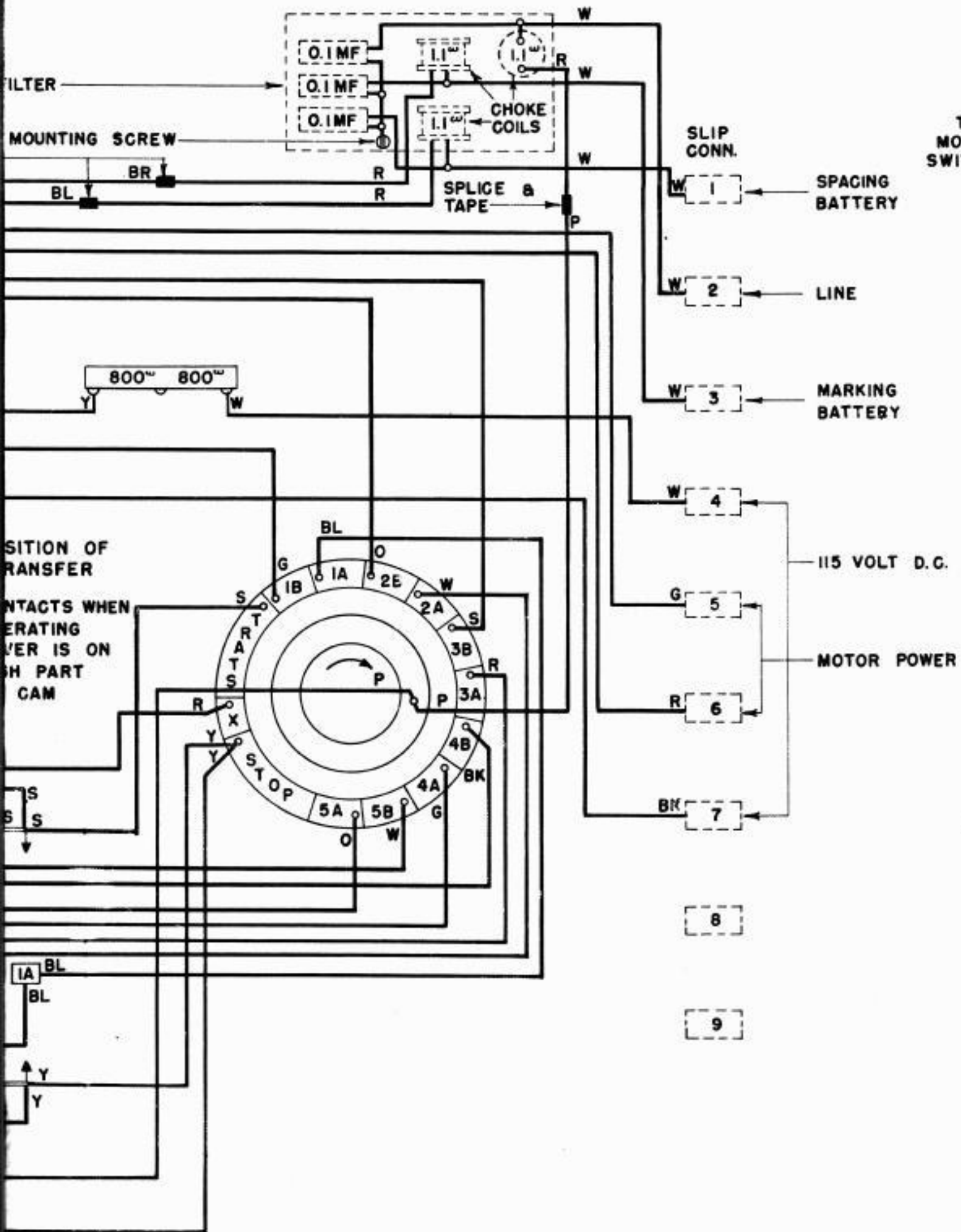


NOTE NO.	NOTE	NOTE NO.	NOTES (CONT.)
1.	DOTTED PARTS ARE LOGATED BENEATH BASE		
2.	<p>105863 CABLE (ASSEM)</p> <p>77126 MOTOR POWER CABLE (ASSEM)</p> <p>106129 MOTOR POWER CABLE (ASSEM)</p> <p>MOTOR LEADS</p> <p>FILTER WIRING</p>	4	<p>IF MOTOR FAILS TO REACH DESIRED SPEED WITH GOVERNOR ADJUSTED, INSERT 50 100 OR 200 IN FIELD LOOP.</p> <p>OR</p> <p>IF VOLTAGE IS ABNORMAL INSERT 50 IN ARMATURE LOOP.</p>
3	<p>COLOR CODE</p> <p>BK BLACK</p> <p>BL BLUE</p> <p>BR BROWN</p> <p>G GREEN</p> <p>O ORANGE</p>	5	MOTOR "OFF" WHEN SWITCH HANDLE IS TO THE LEFT IN UNIT.
		6	COVER LEADS AT GOVERNOR RESISTOR TERMINALS WITH HIGH TEMPERATURE TUBING- 60280 RM.
	<p>SOLID COLOR OR TRACER IN WHITE WIRE</p> <p>P PURPLE</p> <p>R RED</p> <p>S SLATE</p> <p>W WHITE</p> <p>Y YELLOW</p> <p>(RED AND BLUE TRACER)</p>		

SENDING CONTACT FIL

GROUND TO COIL M
SPLICE AND TAPE





MOTOR (60 CY)

MOTOR A (A.C. SE (10612

MOTOR D.C. GOV (7712

- 8
- 9



FIG. 1
MOTOR ARRANGEMENT GM
(60 CYCLE SYNCHRONOUS)

REVISIONS	
(B)	WIRING FOR SWITCH CHANGED. 2-9-44 33404
(C)	FIELD SHOWN DIVIDED ON EACH SIDE OF ARMATURE 5-20-44 34462
(D)	9-6-44 35483
(E)	6-19-45 38364
(F)	4-24-46 40096
(G)	7-12-49 47884
(H)	10-11-49 48375
(J)	5-29-50 49624
(K)	11-2-50 50334
(L)	11-24-50 50384
(M)	9-4-51 52218
(N)	11-19-51 52814

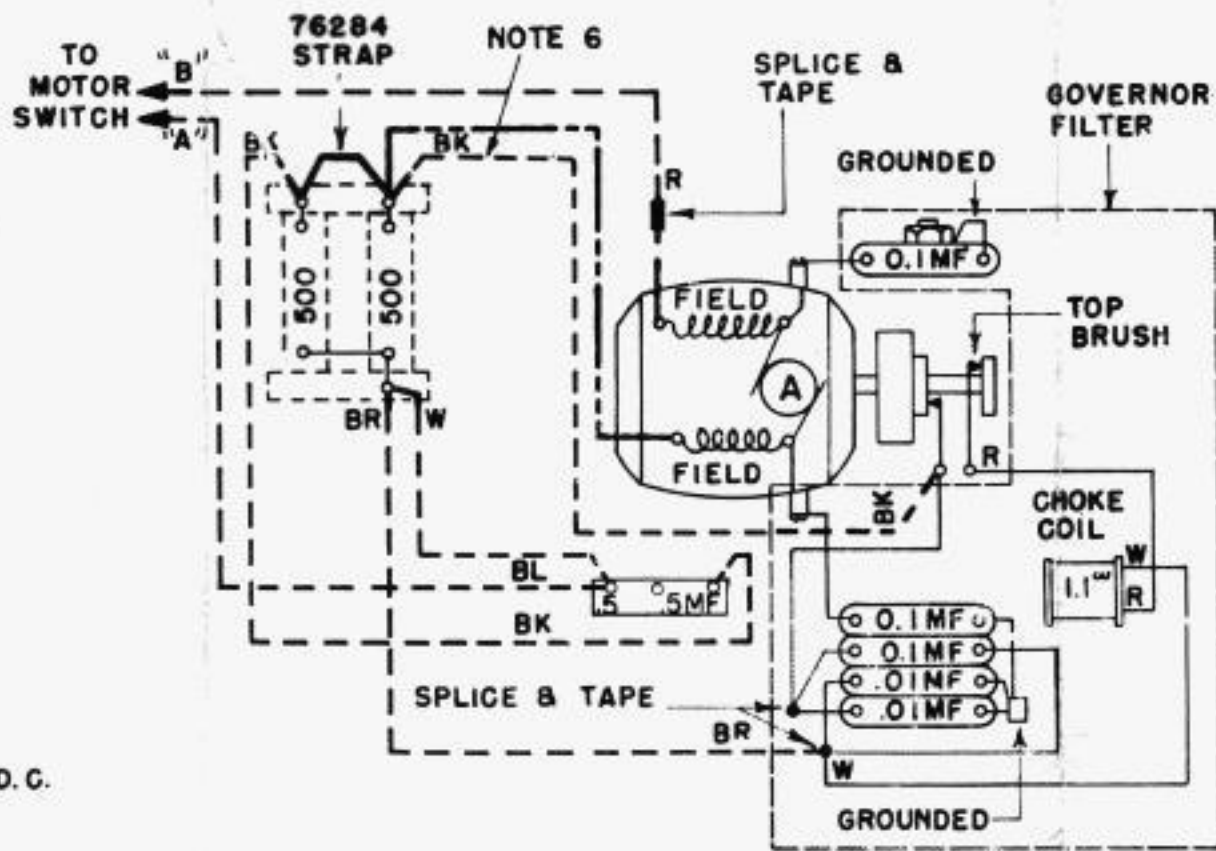


FIG. 2
MOTOR ARRANGEMENT GL
(A.C. SERIES WITH FILTER)
(106129 CABLE)

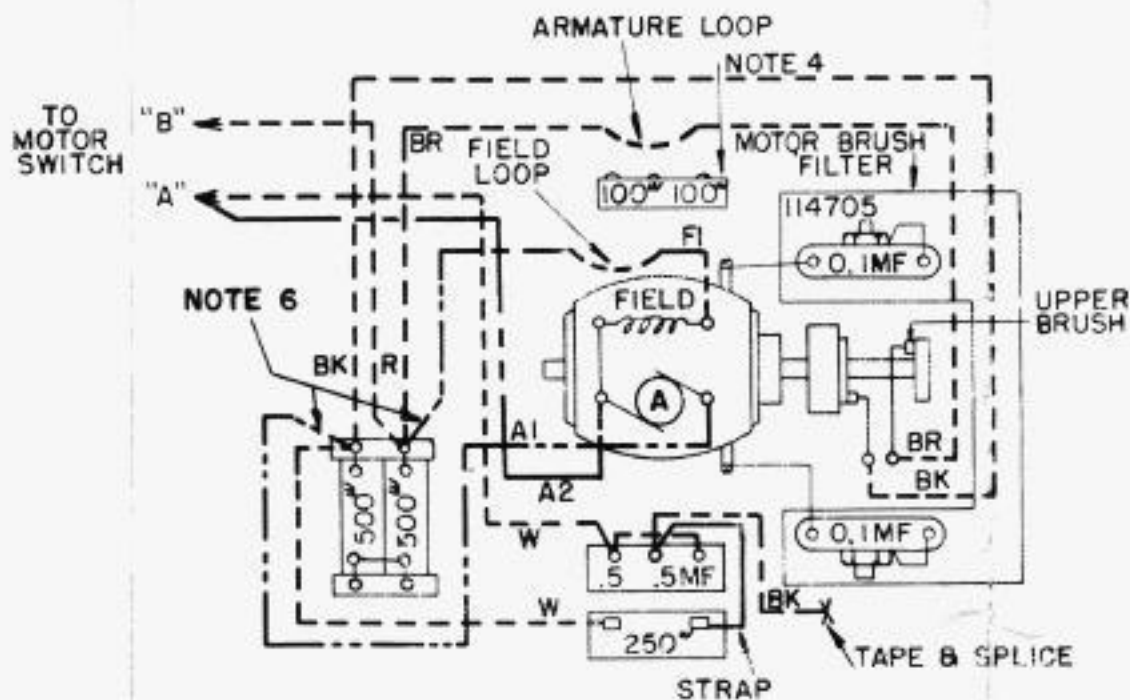


FIGURE 3
MOTOR ARRANGEMENT HS
DC. GOVERNED MOTOR
(77126 CABLE)

FILE: 10-A18AA
WD-2271-N
10-11-43

WIRING DIAGRAM
TWO-CHANNEL START-STOP TRANSMITTER

DISTRIBUTOR
XD91,216
MOTOR ARRGT
GL, GM, HS

APPROVED
[Signature]
TELETYPE CORPORATION