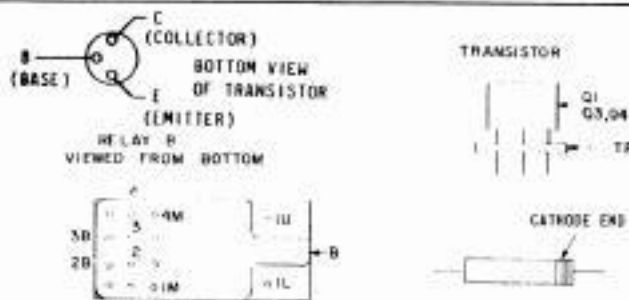
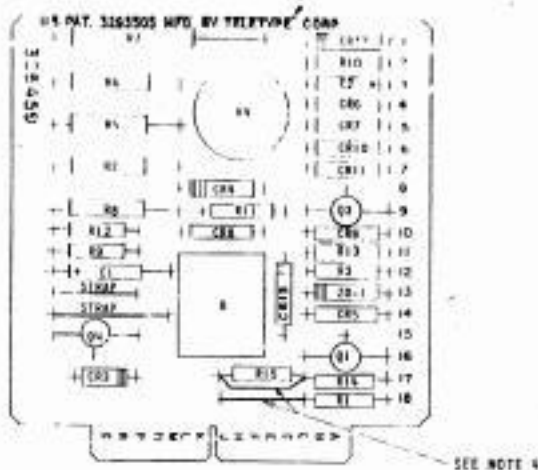


305457 CIRCUIT BOARD



NOTES:

- REFER TO 7818WD FOR CARD MARKING INFORMATION.
- CIRCUIT BOARD 305459 RI-193448
CIRCUIT BOARD 305460 RI-308434
- RAISE R7, R5, R6, R7 & R8 1/8" ABOVE CIRCUIT CARD.
- THIS CIRCUIT BOARD IS FACTORY WIRED FOR 20 MA. (305459) OR 60 MA. (305460) D.C. SIGNAL LINE OPERATION. (PIN H IS POSITIVE INPUT, PIN B IS GROUND) TO BE COMPATIBLE WITH AN EIA INPUT (CORRESPONDING TO EIA STANDARD RS-232-A) REMOVE THE TWO STRAPS ON THE CIRCUIT CARD. (PIN H IS EIA GROUND, PIN B IS EIA INPUT).
- SEE ACTUAL 726/WO FOR EXTERNAL WIRING INFORMATION.

CIRCUIT BOARD

305459-460

REV.	DATE	AUTHOR	REVISION
1	10-27-65	WOP	INITIAL
2	11-10-65	WOP	REVISION
3	12-10-65	WOP	REVISION
4	1-10-66	WOP	REVISION
5	7-13-66	WOP	REVISION

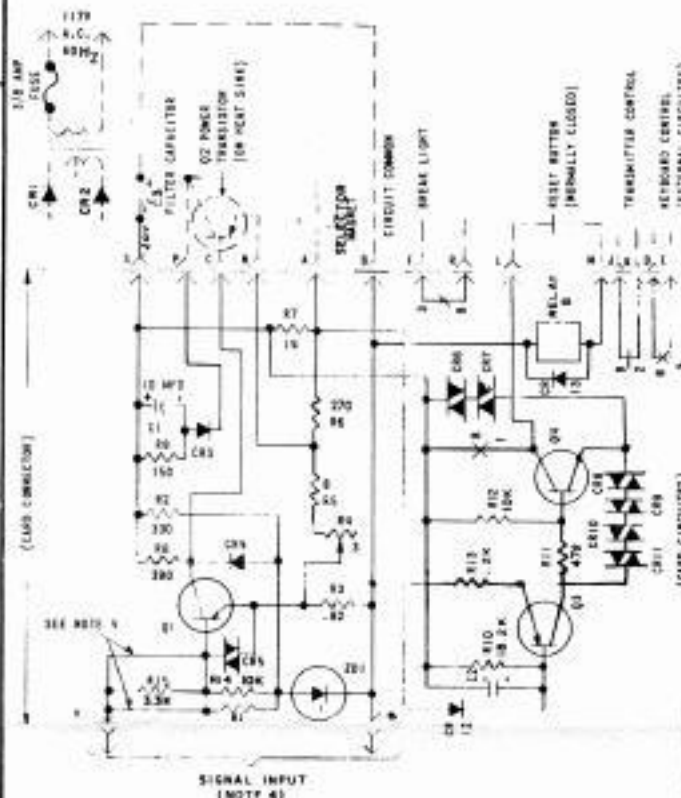
SELECTOR MAGNET DRIVER WITH BREAK DETECTOR

SELECTOR MAGNET DRIVER:

IN THE MARKING CONDITION, Q IS OFF BIASED AND Q7 IS ON. THE MAGNET CURRENT IS ADJUSTED TO 500 AMPERE BY ADJUSTING R4 WITH THE SIGNAL LINE IN THE MARKING CONDITION, Q1 IS ON, Q2 BIASED BY Q7, THEREBY ALLOWING THE MAGNET TO RELEASE.

BREAK DETECTOR:

IN THE MARKING CONDITION, Q3 AND Q4 ARE OFF, KEEPING RELAY B DE-ENERGIZED. Q3 WILL STAY OFF WITH THE SIGNAL LINE SPACING, BUT AFTER 60.5 MS AND BEFORE 250 MS OF AN EPOCH SIGNAL LINE, Q3 AND Q4 TURN ON, ENERGIZING RELAY B.



WOP

APPROVALS

T. W. D. C. W. M.

E-NUMBER

PROD. NO. 305459-460

DATE: 5-11-65

E. S. D. FILE NO. C-1125A

DRWN. E. W. D. CHD. 7/2

ENGR. G. B. B. APPD. 7/2

TELETYPE CORPORATION

305459-460

REF. DESIG.	TELETYPE PART NO.	TOTAL QTY.	NAME AND DESCRIPTION	LOCATING FUNCTION	REF. DESIG.	TELETYPE PART NO.	TOTAL QTY.	NAME AND DESCRIPTION	LOCATING FUNCTION
R1	183448	1	RESISTOR, 450 OHMS, 1/2 W	1/8 AMP. SWITCHING					
R1	388131	1	RESISTOR, 180 OHMS, 1/2 W	1/8 AMP. SWITCHING					
R2	181624	1	RESISTOR, 330 OHMS, 2-1/2 W	CURRENT LIMITING	R1	ADJUST	1	CIRCUIT BOARD	
R3	182778	1	RESISTOR, 0.82 OHMS, 1/2 W	SWITCH BIAS					
R4	182773	1	RESISTOR, 2 OHMS, 2.5 W	CURRENT ADJUST					
R5	181717	1	RESISTOR, 8 OHMS, 5 W	Q2 EMITTER BIAS					
R6	182770	1	RESISTOR, 370 OHMS, 5 W	Q2 EMITTER BIAS					
R7	182772	1	RESISTOR, 14 OHMS, 10 W	Q2 COLLECTOR LOAD					
R8	182622	1	RESISTOR, 280 OHMS, 5 W	Q1 COLLECTOR LOAD					
R9	182776	1	RESISTOR, 150 OHMS, 1/2 W	TRANSIENT LIMITING					
R10	211726	1	RESISTOR, 18.2K OHMS, 1/4 W	BREAK TIME ADJUST					
R11	137502	1	RESISTOR, 470 OHMS, 1/2 W	BASE CURRENT LIMITING					
R12	128856	1	RESISTOR, 18K OHMS, 1/2 W	BIAS RESISTOR					
R13	157461	1	RESISTOR, 1.2K OHMS, 1/2 W	VOLTAGE DIVIDER					
R14	128854	1	RESISTOR, 50K OHMS, 1/2 W	SWITCHING					
R15	129657	1	RESISTOR, 5.5K OHMS, 1/2 W	CURRENT LIMITING					
CR4	181519	4	DIODE, 1N912	TRANSIENT LIMITING					
CR5	181519	4	DIODE, 1N912	VOLTAGE CLAMPING					
CR6	178844	7	VARIABLE, 100 A	INPUT PROTECTION					
CR7	178844	7	VARIABLE, 100 A	EMITTER BIAS					
CR8	178844	7	VARIABLE, 100 A	SWITCHER BIAS					
CR9	178844	7	VARIABLE, 100 A	VOLTAGE CLAMPING					
CR10	178844	7	VARIABLE, 100 A	VOLTAGE CLAMPING					
CR11	178844	7	VARIABLE, 100 A	VOLTAGE CLAMPING					
CR12	181552	2	DIODE, 1N912	BIASING					
CR13	181552	2	DIODE, 1N912	TRANSIENT LIMITING					
Z01	182774	1	DIODE, ZENER 5.7V ±0.5%, 1WATT	VOLTAGE REFERENCE					
C1	182620	1	CAPACITOR, 10 MFD	TRANSIENT LIMITING					
C2	301455	1	CAPACITOR, 15 MFD	BASE CURRENT SUPPLY					
Q1	181571	1	TRANSISTOR, 2N101	INPUT SWITCH					
Q2	177100	1	TRANSISTOR, P-22	SWITCH					
Q3	388669	1	TRANSISTOR, 2N106	RELAY DRIVER					
TP	324147	1	PAD, TRANSISTOR 2-24						
TR	184485	2	PAD, TRANSISTOR Q1, Q3						
R	201554	1	RELA, 400 CC-AM-2	LINE BREAK INDICATOR					
T	117521	8	TERMINAL						

WOP

APPROVALS

R. AND D. C. W. M.

E-NUMBER

PROD. NO. 305459-460

DATE: 5-11-65

E. S. D. FILE NO. C-1125A

DRWN. E. W. D. CHD. 7/2

ENGR. G. B. B. APPD. 7/2

TELETYPE CORPORATION

305459-460