

REVISIONS

ISSUE	DATE	AUTH. NO.
# 2	8-11-51	70992
# 3	8-16-51	70992-1
# 4	11-20-51	71638
# 5	11-24-51	71752
# 6	9-22-52	73885
# 7	6-22-54	82287

SIGNAL CIRCUITS

- NO. NOTES
- FOR ACTUAL WIRING DIAGRAM OF INDIVIDUAL UNITS, SEE:
4366WD APPARATUS CABINET - LBAC231
2900WD MOTOR UNITS - LMU12
3542WD TYPING REPERF. BASE - LMB
3528WD TYPING REPERF. - LPE
 - USE SYNCHRONOUS MOTOR ON REGULATED (180 ± 15-) AC POWER ONLY. GOVERNED MOTORS AND OTHER POWER CIRCUITS OPERABLE ON 50 TO 60- UNREGULATED AC.
 - ALL APPARATUS IS SHOWN IN PROPERED OR DE-ENERGIZED POSITION.
 - A - RESISTANCE IN OHMS (Ω)
B - INDUCTIVE VALUES IN MICROHENRIES(MH)
C - CAPACITANCE VALUES IN MICROFARADS (MF, μF OR MFD)
 - LEGEND:
⊕ F CONNECTOR PLUG (UPPER LEFT REFER.)
⊕ E CONNECTOR PLUG (UPPER MIDDLE REFER.)
⊕ D CONNECTOR PLUG (UPPER RIGHT REFER.)
⊕ G CONNECTOR PLUG (UPPER BASE)
⊕ L CONNECTOR PLUG (LOWER LEFT REFER.)
⊕ K CONNECTOR PLUG (LOWER MIDDLE REFER.)
⊕ J CONNECTOR PLUG (LOWER RIGHT REFER.)
⊕ M CONNECTOR PLUG (LOWER BASE)
 - SELECTOR MAGNET CIRCUITS WIRED FOR .030 AMPERE OPERATION.
LINE RELAY CIRCUITS WIRED FOR .050 AMPERE NEUTRAL OPERATION. FOR .020 AMPERE OPERATION, REMOVE WIRE SHOWN * AND ADD DASHED WIRE FOR POLAR OPERATION, REMOVE * WIRE ONLY.
 - LINE RELAY CIRCUITS WIRED FOR WIRING (-) MARKING BATTERY. FOR PLUS (+) MARKING BATTERY, EXCHANGE LEADS ON TERMINALS M2N AND M2S, S7N AND S7S.
 - AUTOMATIC OR MANUAL TAPE FEEDOUT OPTIONAL WITH REPERFORATOR. ONE RESISTOR IS USED FOR ALL LEVELS, THEREFORE, ONLY ONE SWITCH MAY BE OPERATED AT A TIME.
 - SPARE REPERFORATOR SHOULD BE WIRED FOR .030 AMPERE SELECTOR MAGNET OPERATION, USING RING, TIP, AND SLEEVE PLUGS. CORRECT RING TO MARKING SIDE, TIP TO SPACING SIDE.
 - THIS RECEPTACLE FOR USE WITH SPARE REPERFORATOR (MATING PLUG FURNISHED). FUSE MUST BE PROVIDED WITH REPERFORATOR.
 - THESE CONTACTS ARE ONLY OPERATED WHEN LIVE RELAY IS REMOVED FROM ITS MOUNTING.
 - FOR EXTERNAL LOW TAPE INDICATION (5.2V AC), CONNECT TO TERMINALS T13 AND T15. MAXIMUM CURRENT .200 AMPERES.
 - SYMBOL LEAD SHIELDS CONNECTED TO H TERMINAL BLOCK FOR EXTERNAL GROUNDING.
 - WHEN IT IS DESIRED TO USE ONE OF THE CABINET REPERFORATORS AS A SPARE, WIRES DESIGNATED —S— SHOULD BE REMOVED AND WIRES DESIGNATED —D— SHOULD BE ADDED.
A CORD WITH APPROPRIATE PLUG (TELETYPE PART NO. 174233) ON EACH END MAY THEN BE USED TO PATCH BETWEEN SPARE UNIT AND OTHER REPERFORATORS.
 - SL-BL INDICATES SLOW-BLOWING.

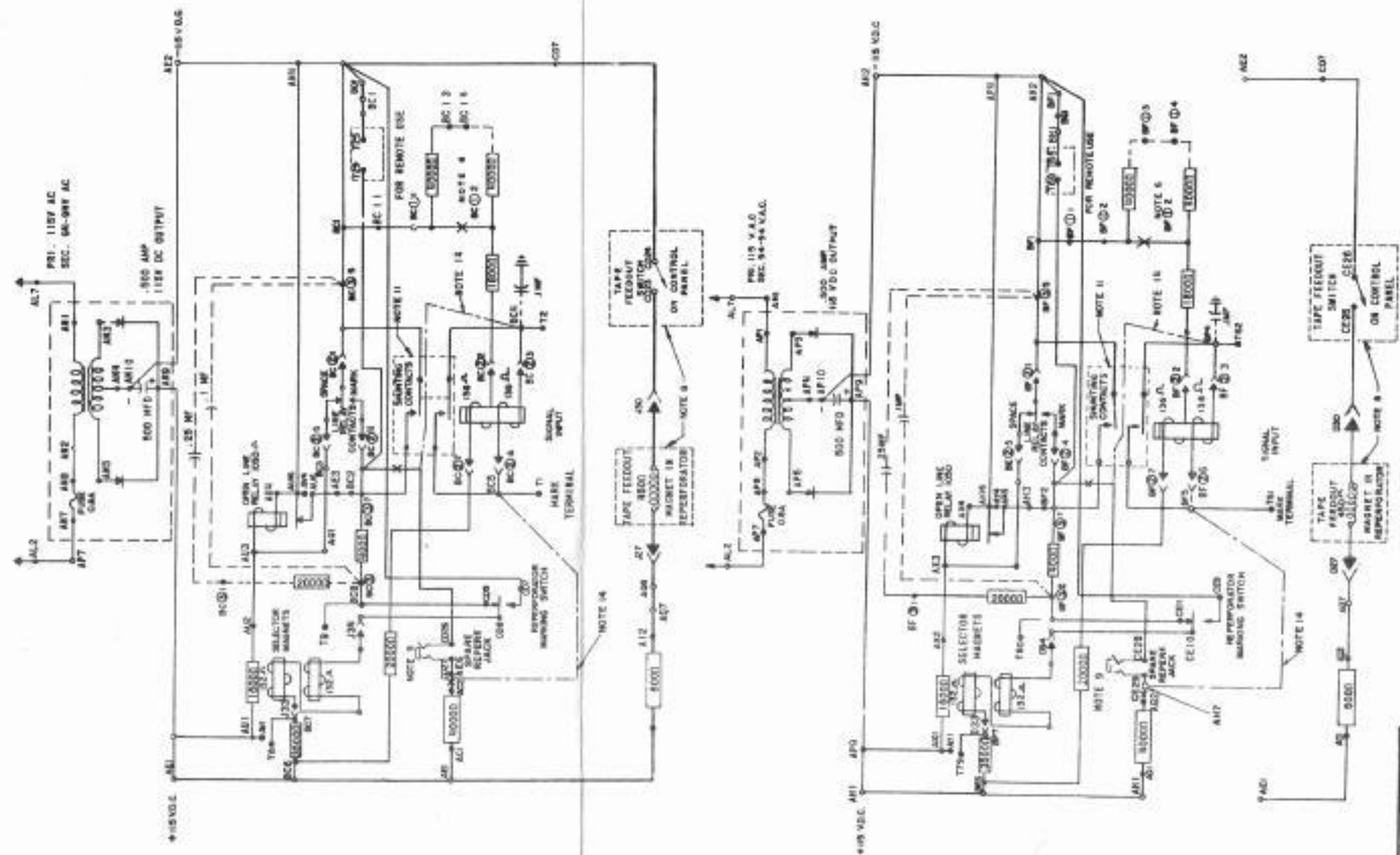
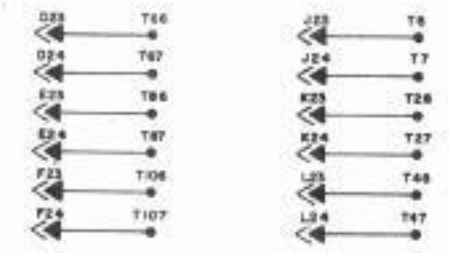


TABLE OF SIGNAL CIRCUIT TERMINAL DESIGNATION FOR DIFFERENT REPERFORATOR LEVELS

LOWER SHELF			UPPER SHELF		
RIGHT	MIDDLE	LEFT	RIGHT	MIDDLE	LEFT
T1	T2	T3	OPEN LINE RELAY	T4	T5
T6	T7	T8	LINE RELAY	T9	T10
T11	T12	T13	SIGNAL LINE CONNECTIONS	T14	T15
T16	T17	T18	REPERF. CONTROL CONNECTIONS	T19	T20
T21	T22	T23	REPERF. CONNECTOR	T24	T25
T26	T27	T28	SELECTOR MAGNET TERMINALS	T29	T30
T31	T32	T33		T34	T35



SPARE LEADS FROM REPERFORATOR CONNECTORS

SHEET 1 OF 2

SCHEMATIC WIRING DIAGRAM FOR MODEL 28 (RECEIVING) APPARATUS CABINET (LBAC231)

APPROVALS

D AND R	E OF M
-----	-----

E-NUMBER

PROG. NO. 4366WD

DATE 1-13-61

R.D. FILE NO. 43-42/554A

DRAWN CHD.

ENGD. APPD.

TELETYPE CORPORATION

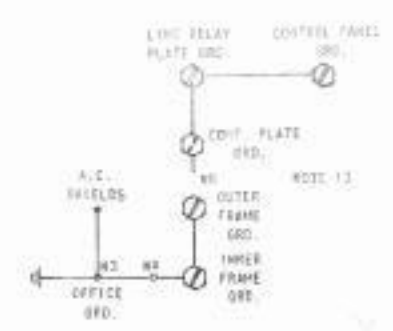
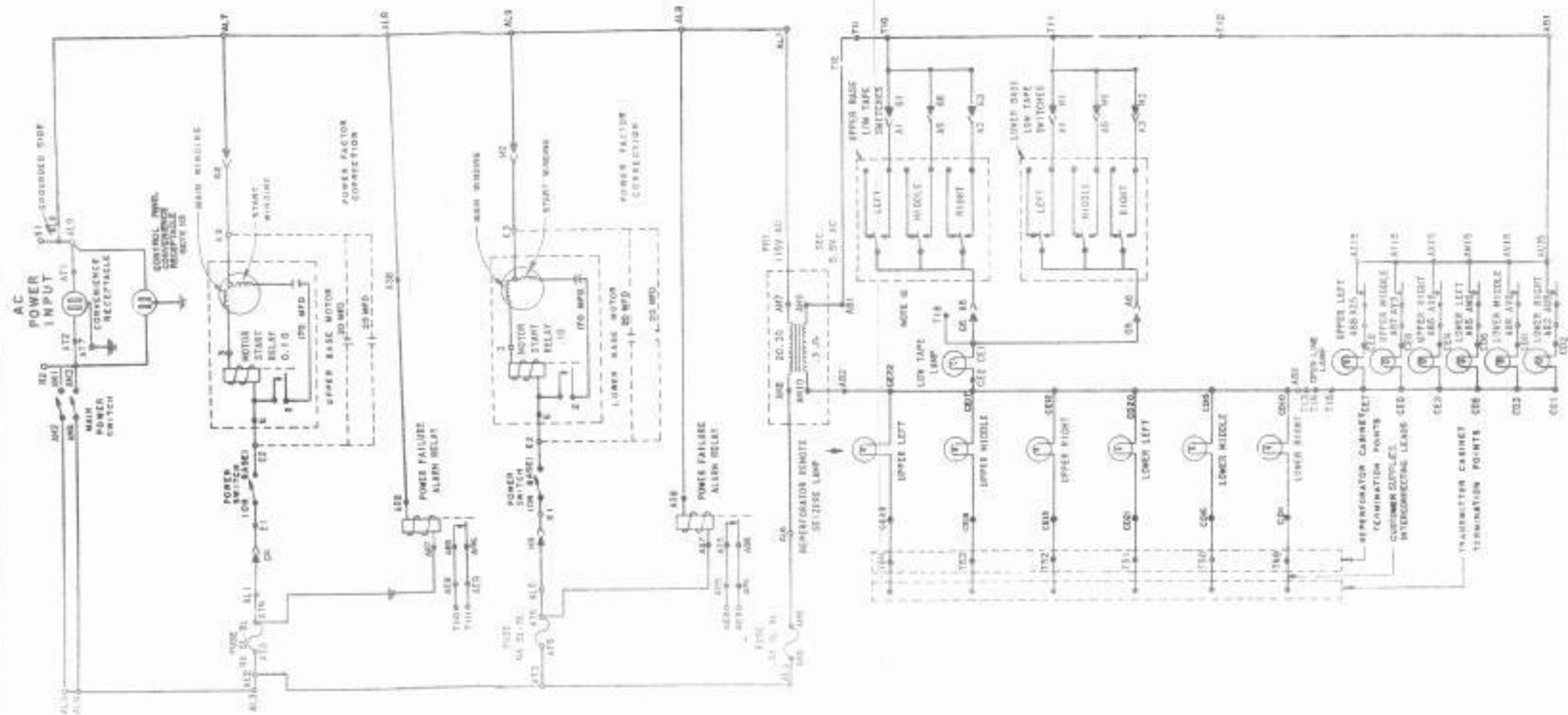
4366 WD

POWER AND CONTROL CIRCUITS

4366 WD

REVISIONS

ISSUE	DATE	AUTH. NO.
1	8-11-61	70592
2	8-18-61	70592-1
3	11-20-61	71638
4	11-28-61	71762
5	5-22-62	72493
6	6-22-64	82397
7	2-2-66	8607



SHEET 2 OF 2

SCHEMATIC
WIRING DIAGRAM
FIG.
MODEL 39
(RECEIVING)
APPARATUS CABINET
(LS1000)

APPROVALS

D AND R	E OF M
.....

E-NUMBER
PROD. NO. 132660
DATE 1-13-61
P.D. FILE NO. 90-A2/8544
DRAWN CHD.
ENGR. APPG.

TELETYPE CORPORATION

4366 WD