

- NOTES**
1. WIRING LEGEND:  
 DISTANT TERMINATING AREA  
 DISTANT TERMINATING DESIGNATION  
 WIRE COLOR CODE  
 E-14-W
  2. TERMINAL DESIGNATIONS ENCLOSED IN PARENTHESES ARE NOT MARKED ON COMPONENTS.
  3. USE INSULATED LEADS WHEN ADDING STRAPS TO STEPPING SWITCH.
  4. ALL CONNECTORS AND TERMINALS VIEWED FROM WIRING SIDE.
  5. CONTACTS SHOWN IN THE UNOPERATED POSITION.
  6. FOR SCHEMATIC DIAGRAM SEE T080, T220 W3
  7. COLOR CODE:  
 BK-BLACK      P-PURPLE  
 BL-BLUE       R-RED  
 BR-BROWN    S-SLATE  
 G-GREEN      Y-YELLOW  
 O-ORANGE     W-WHITE

8. THE 9TH AND 10TH CHARACTERS ARE PROVIDED WITH A UNIVERSAL BOARD (173570) AND CONNECTOR TO PERMIT EASY RECODING. TO CODE THE UNIVERSAL BOARD BREAK OFF TINES IN THE SPACE AREA WHERE SPACING PULSES ARE REQUIRED AND BREAK OFF TINES IN THE MARK AREA WHERE MARKING PULSES ARE REQUIRED. THE EXAMPLE BELOW ILLUSTRATES CODING THE LETTER 'W'.

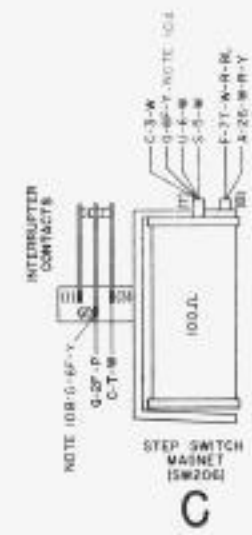


THE STEPPING SWITCH SW206, AS SUPPLIED FROM THE FACTORY DOES NOT HAVE THE 1ST, 4TH, 7TH AND 8TH CHARACTER POSITIONS WIRED TO CODE. THESE POSITIONS CONDUCT MARKING BATTERY TO THE TERMINALS CORRESPONDING TO MARK PULSES AND SPACING BATTERY TO THOSE CORRESPONDING TO SPACE PULSES. SPACING AND MARKING BATTERY MAY BE OBTAINED BY STRAPPING TO THE NEAREST FACTORY WIRED TERMINAL OF THE PROPER CODE PULSE.

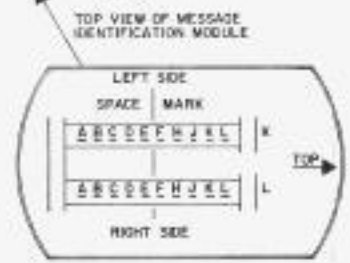
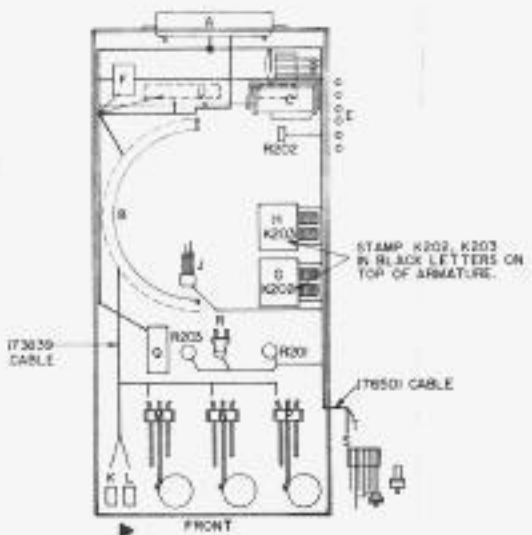
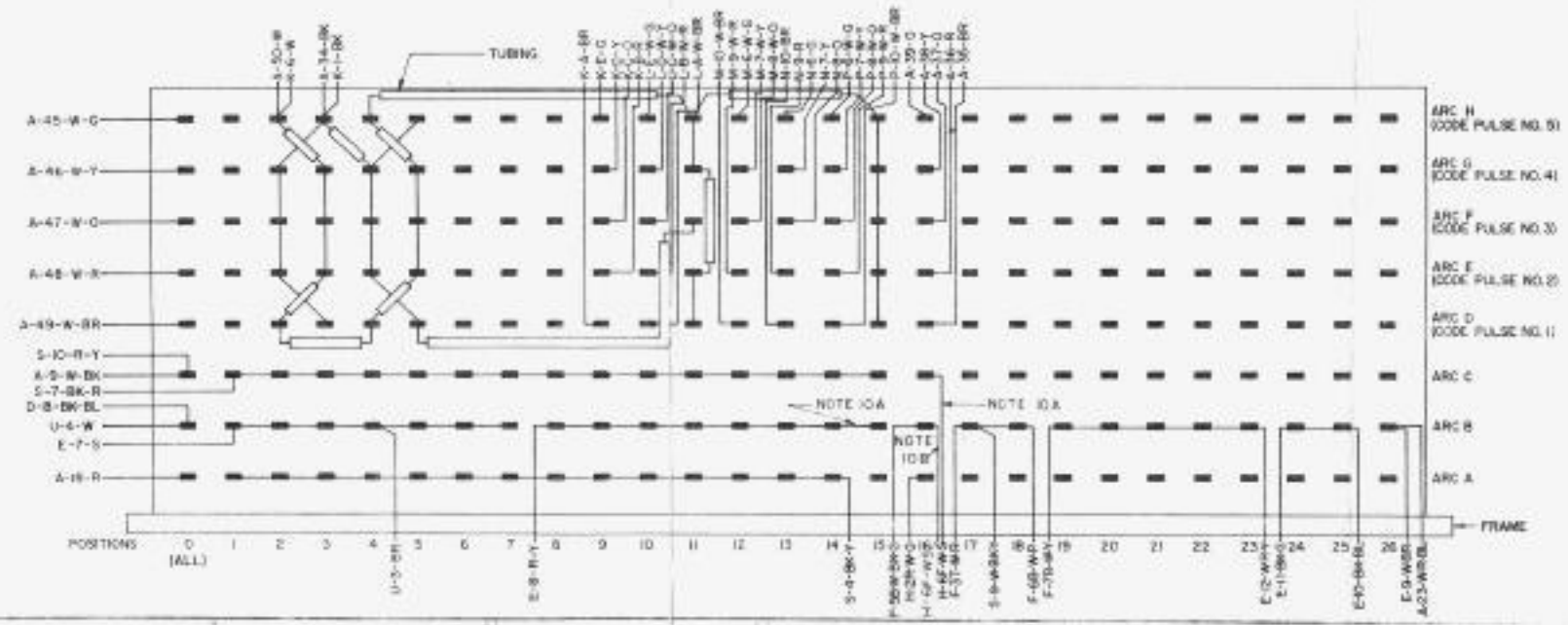
IF A SPECIFIC CHARACTER IS NOT REQUIRED IN ANY OF THE FOUR POSITIONS, THE CHARACTER 'L' (FULL MARKING) SHOULD BE STRAPPED IN THE POSITION.

9. WHEN IT IS DESIRED TO USE EXTERNAL CIRCUITRY TO PULSE OR CONTROL TRANSMISSION, THE FOLLOWING WIRING CHANGES MUST BE MADE:  
 A. STRAP TERMINALS 10 AND 15 OF ARC 'A' OF THE STEPPING SWITCH IN EACH MODULE.  
 B. MAKE ADDITIONAL WIRING CHANGES AS SHOWN ON CARRIER WIRING DIAGRAMS.

10. WIRING COMMON TO ALL MODULES EXCEPT AS FOLLOWS:  
 A-176540, 31930 ONLY  
 B-30543 ONLY



**B**  
 STEPPING SWITCH (SW206) AS VIEWED FROM LEFT SIDE OF MODULE



SEE 0581 CONTIN. RECORD FOR COM. PLATE LIST OF SHEETS COMPRISING THIS WD

SHEET 1  
 WIRING DIAGRAM FOR MESSAGE IDENTIFICATION MODULES 176540 B 31930 315543

APPROVALS  
 I AND R E OF M

DATE 10-4-65  
 FILE NO 40 A2/85AA  
 DRAWN HJ  
 ENGR RRR  
 APPR X X J

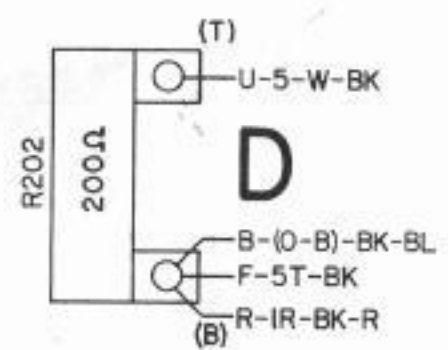
TELETYPE CORPORATION  
 4367WD

A

B

C

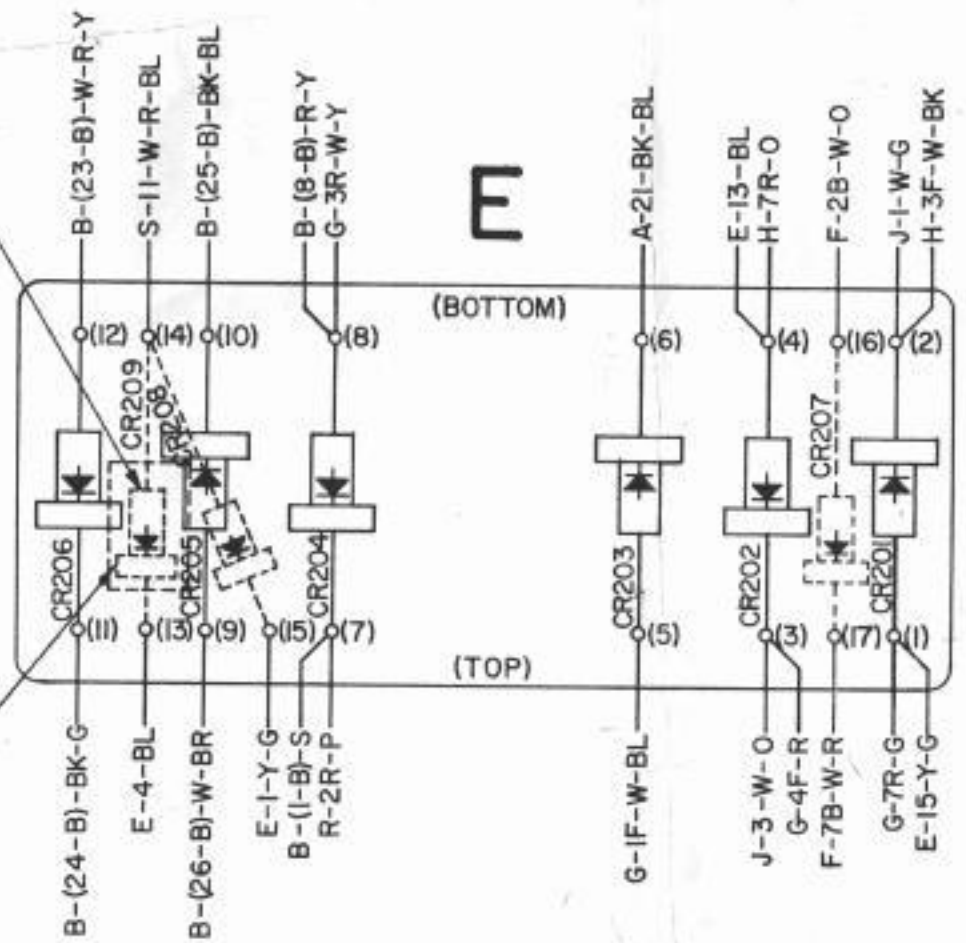
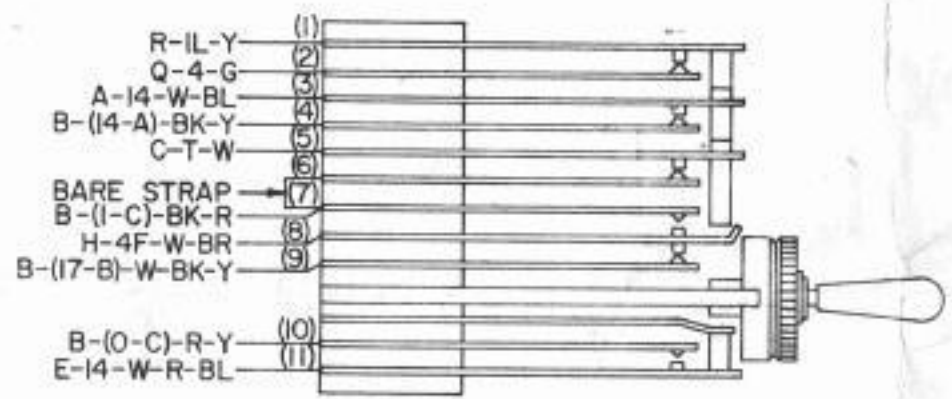
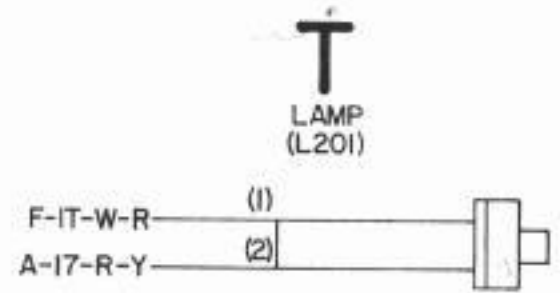
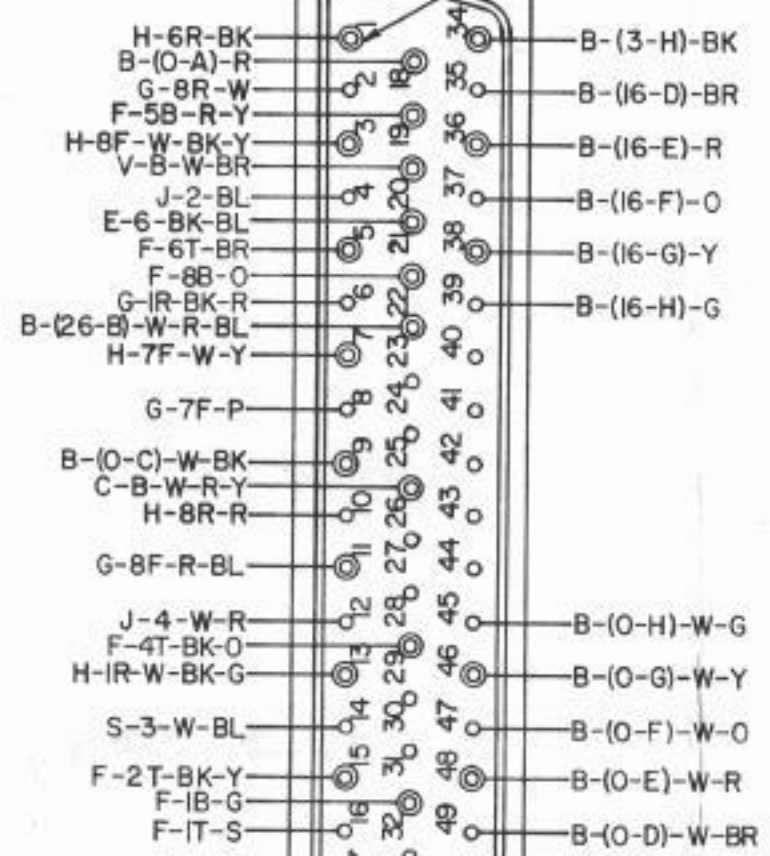
D



CR209, CR208 AND  
CR207 LOCATED ON  
REVERSE SIDE OF BOARD.

COVER CR209 WITH  
TUBING (1 PL.).

COVER TERMINALS WITH  
TUBING (24 PLS.)



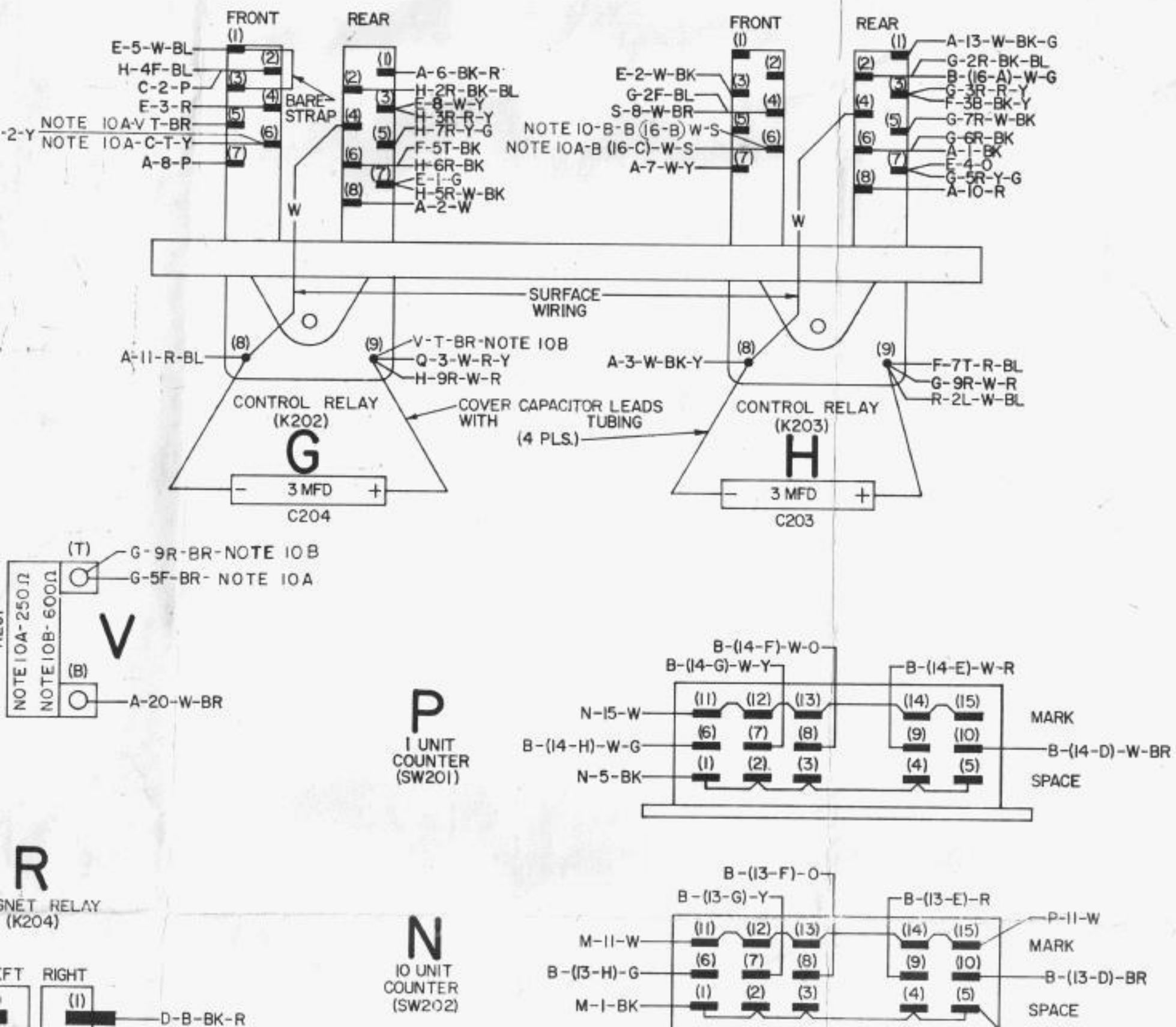
NOT

# 4367WD

ISSUE	DATE	AUTH. NO.
11	2-21-66	90467
12	12-1-66	91164
13	3-10-67	93016-RC

NOTE:  
REVISION INFORMATION MUST ALSO BE REFLECTED ON THE ISSUE CONTROL RECORD, WHICH IS A PART OF THIS DRAWING.

(← FRONT) AS VIEWED FROM UNDER SIDE OF MODULE (REAR →)

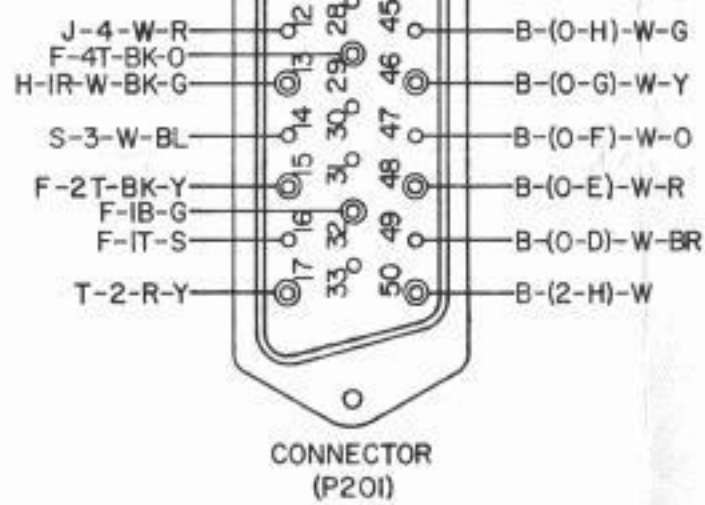


A

B

C

D



CONNECTOR  
(P201)

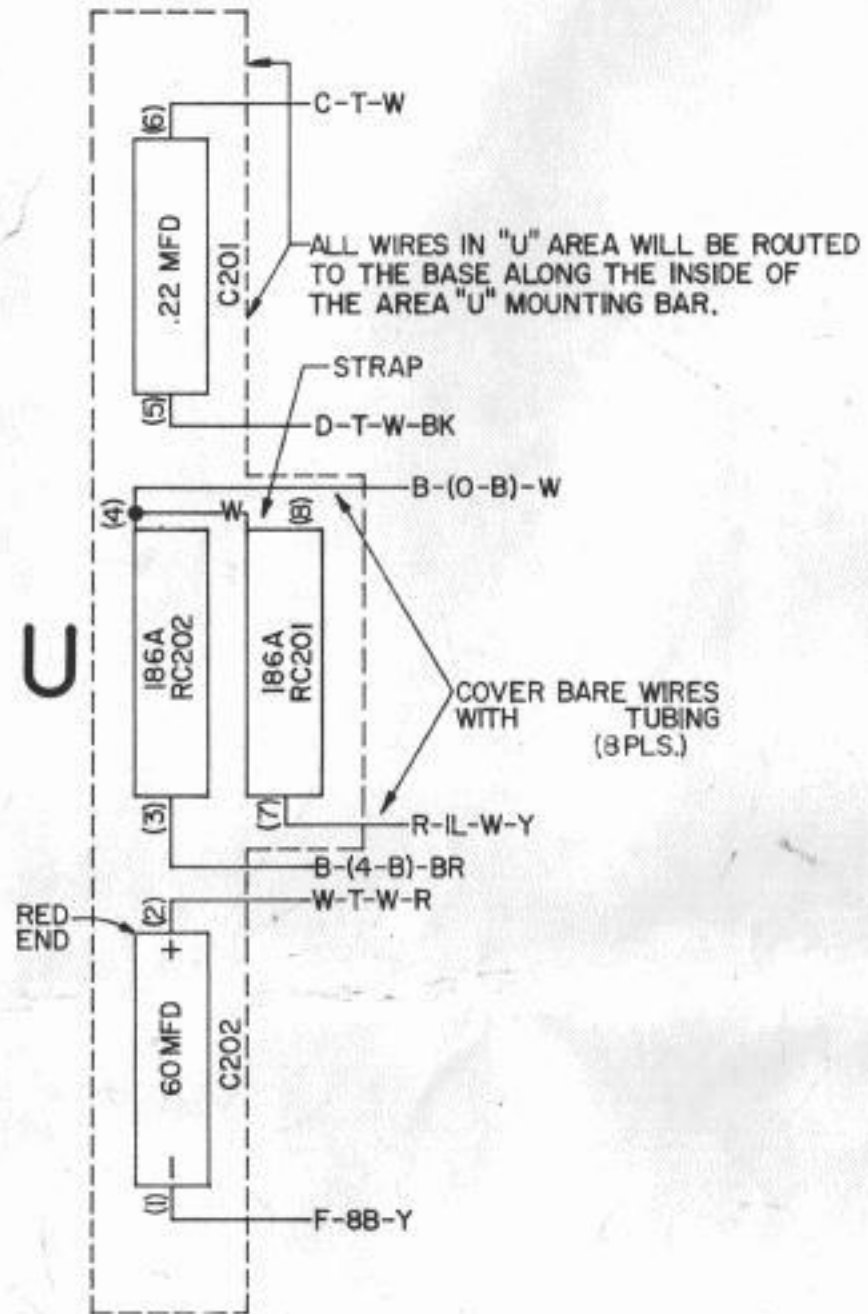
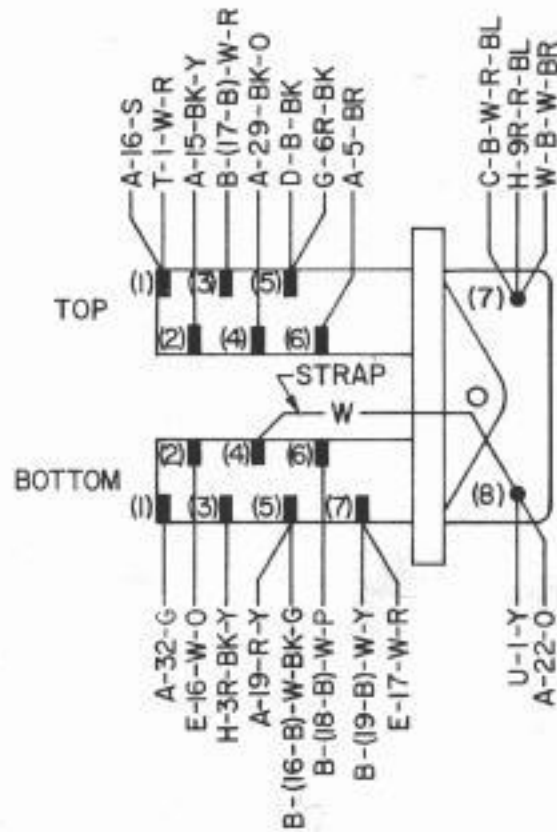
**A**



MESSAGE IDENTIFICATION  
DELETION SWITCH  
SW207

**S**

**F**  
SEIZURE RELAY  
(K201)

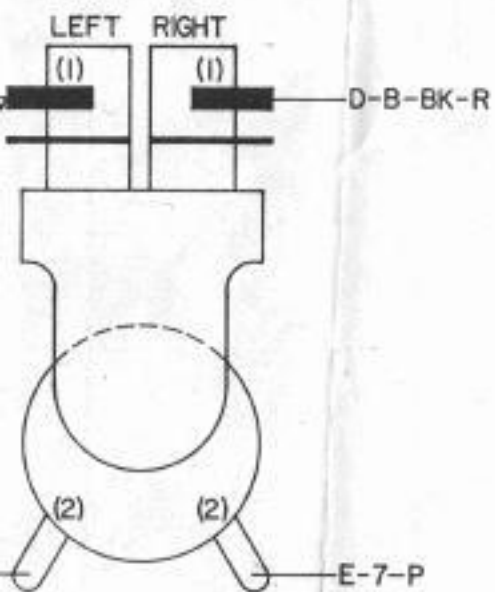


**U**

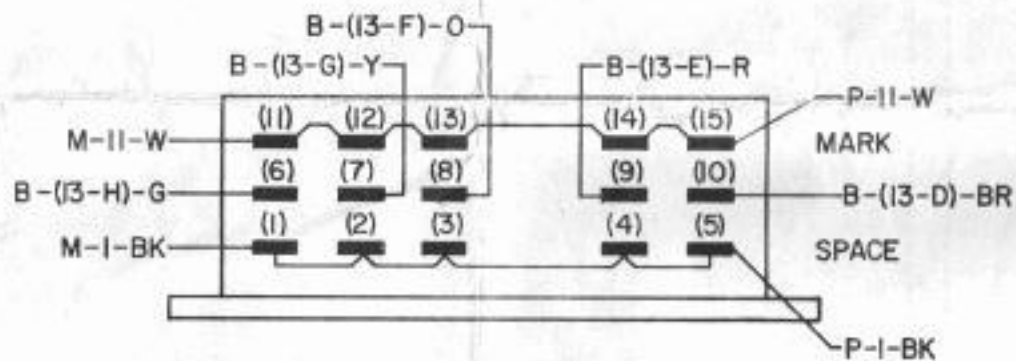


**R**

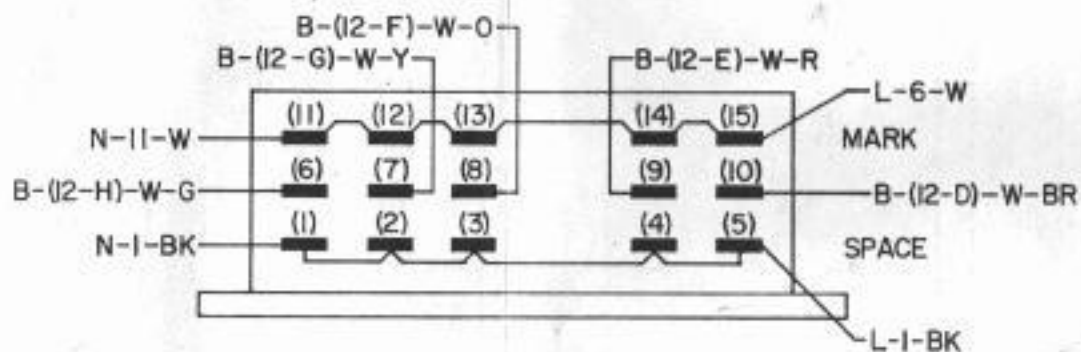
MAGNET RELAY (K204)

**N**

10 UNIT COUNTER (SW202)

**M**

100 UNIT COUNTER (SW203)



SEE ISSUE CONTROL RECORD FOR COMPLETE LIST OF SHEETS COMPRISING THIS W.D.

SHEET 2

WIRING DIAGRAM FOR MESSAGE IDENTIFICATION MODULES 176540 & 319130

315543

APPROVALS

D AND R

E OF M

E-NUMBER

PROD. NO. 4367WD

DATE: 10-7-65

P.D. FILE NO. 40-A2/65AA

DRAWN H.J.

CHKD. *mm*

ENGD. RPP

APPD. *RRS*

TELETYPE CORPORATION

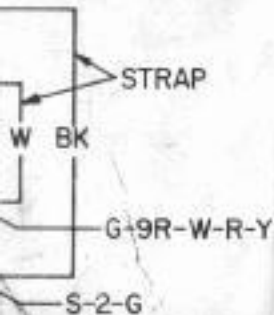
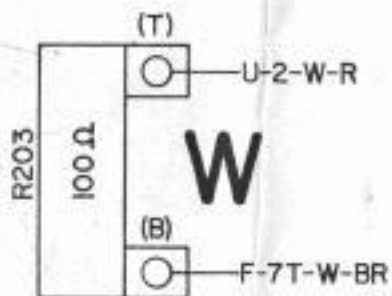
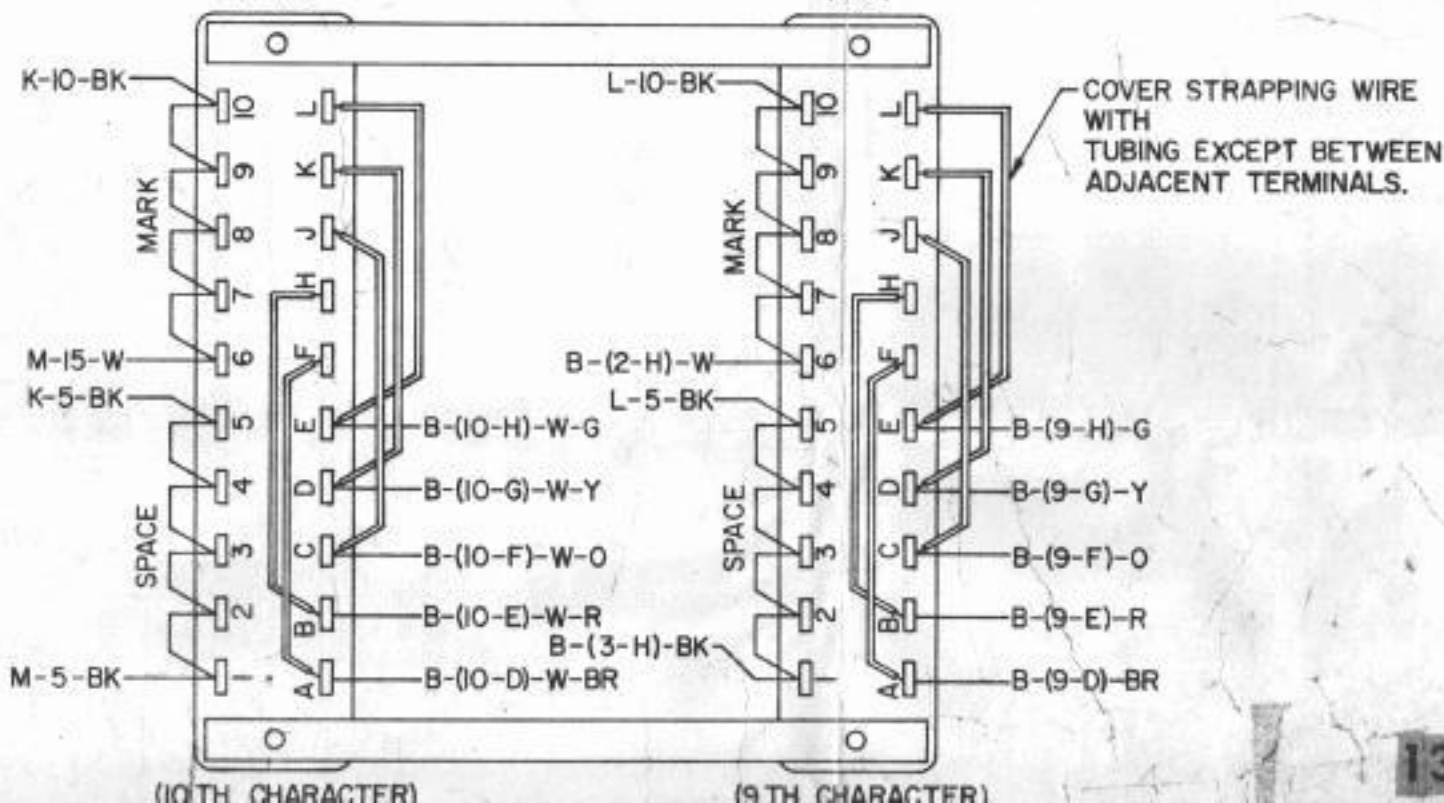
4367WD

**L**

(SW205) REAR VIEW OF RIGHT CONNECTOR (TOP)

**K**

(SW204) REAR VIEW OF LEFT CONNECTOR (TOP)



13