

6445 WD

REVISIONS		
ISSUE	DATE	AUTH. NO.
1	2-5-64	80029
2	4-24-64	81276
3	8-18-64	83081
4	9-29-64	83086
5	10-28-64	84262
6	11-20-64	84989
7	4-28-65	86262
8	5-19-65	87240
9	6-29-65	88013
10	9-11-65	88020
11	1-7-66	89151
12	5-23-66	89028
13	11-1-66	89034

NOTE:
REVISION INFORMATION MUST ALSO BE REFLECTED ON THE ISSUE CONTROL RECORD, WHICH IS A PART OF THIS DRAWING.

SEE ISSUE CONTROL RECORD FOR COMPLETE LIST OF SHEETS COMPRISING THIS W.D.
SHEET 1

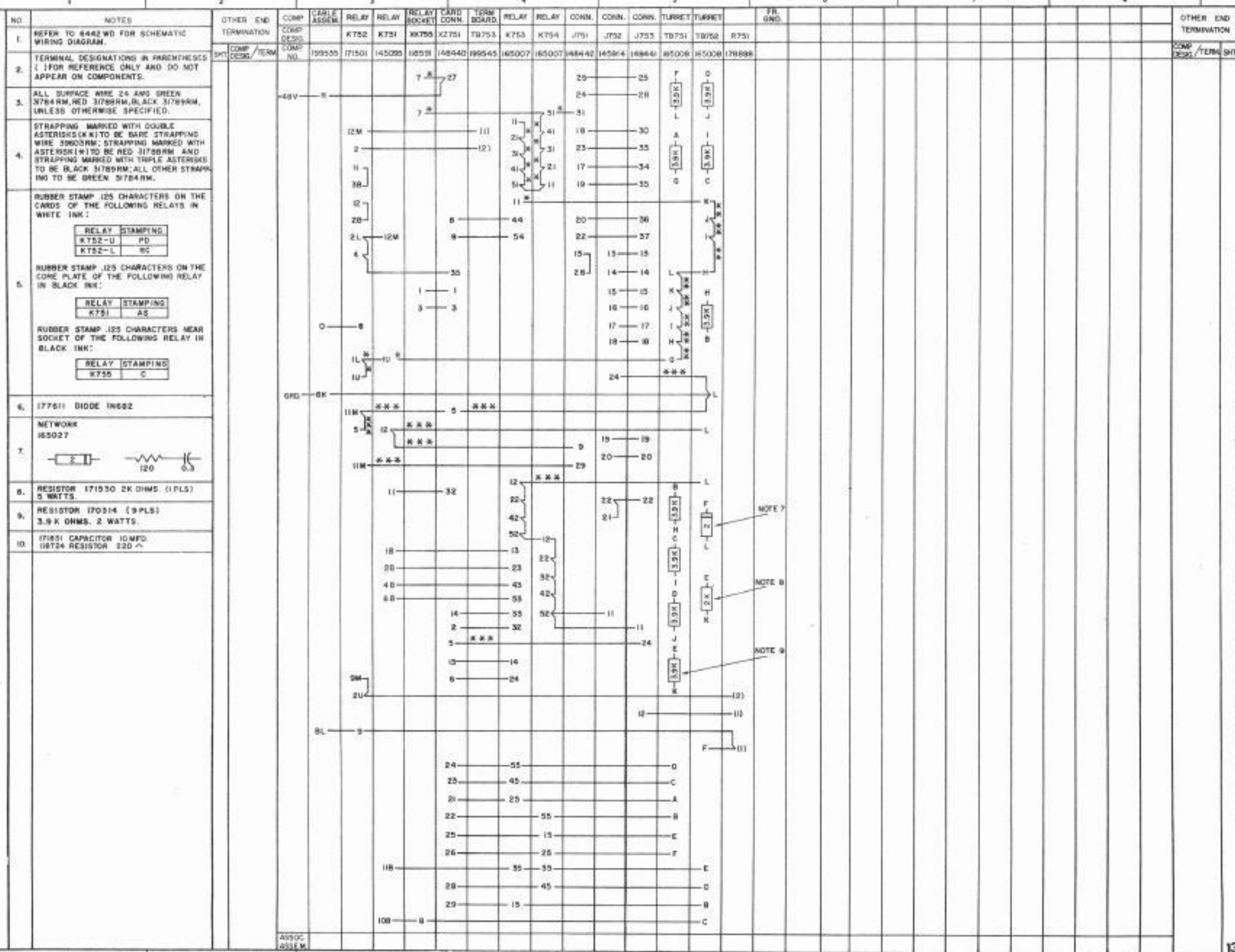
ACTUAL WIRING DIAGRAM FOR TRANSMITTER CIRCUIT ASSEMBLY
ASSEMBLY NO. 198001

APPROVALS	
R AND D	E OF M
<i>[Signature]</i>	

E-NUMBER
PROD. NO. 6445 WD
DATE 9-5-63
P.D. FILE NO. 1-8143AA
DRAWN AHP
ENGR. JHM

TELETYPE CORPORATION

6445 WD



NO. NOTES
1. REFER TO 6442 WD FOR SCHEMATIC WIRING DIAGRAM.
2. TERMINAL DESIGNATIONS IN PARENTHESES () FOR REFERENCE ONLY AND DO NOT APPEAR ON COMPONENTS.
3. ALL SURFACE WIRE 24 AWG GREEN 3784RM, RED 31789RM, BLACK 31789RM, UNLESS OTHERWISE SPECIFIED.
4. STRAPPING MARKED WITH DOUBLE ASTERISKS (**) TO BE BARE STRAPPING WIRE 39603RM; STRAPPING MARKED WITH ASTERISK (*) TO BE RED 31789RM AND STRAPPING MARKED WITH TRIPLE ASTERISKS (***) TO BE BLACK 31789RM; ALL OTHER STRAPPING TO BE GREEN 31784RM.
5. RUBBER STAMP .125 CHARACTERS ON THE CARDS OF THE FOLLOWING RELAYS IN WHITE INK:
RELAY STAMPING
KTS2-U PD
KTS2-L RC
RUBBER STAMP .125 CHARACTERS ON THE CORE PLATE OF THE FOLLOWING RELAY IN BLACK INK:
RELAY STAMPING
K751 AS
RUBBER STAMP .125 CHARACTERS NEAR SOCKET OF THE FOLLOWING RELAY IN BLACK INK:
RELAY STAMPING
K755 C
6. 177611 DIODE 1K682
7. NETWORK 165027
8. RESISTOR 171530 2K OHMS (1PLS) 5 WATTS
9. RESISTOR 170314 (3PLS) 3.9 K OHMS, 2 WATTS
10. 171831 CAPACITOR 10MFD, 18T24 RESISTOR 220 Ω
ASSOC. ASSEM.

6445 WD

REVISIONS

ISSUE	DATE	AUTH. NO.
1	2-3-64	80029
2	4-24-64	81276
3	8-18-64	83081
4	9-29-64	83086
5	10-28-64	84262
6	11-20-64	84989
7	4-26-65	86362
8	5-19-65	87240
9	6-29-65	88013
10	9-11-65	88020
11	1-7-66	89151
12	5-23-66	89028
13	10-1-66	89034

NOTE:
REVISION INFORMATION MUST ALSO BE COLLECTED ON THE ISSUE CONTROL SHEET WHICH IS A PART OF THIS DRAWING.

SEE ISSUE CONTROL RECORD FOR COMPLETE LIST OF SHEETS COMPRISING THIS W.D.

SHEET 2

ACTUAL WIRING DIAGRAM FOR TRANSMITTER CIRCUIT ASSEMBLY

ASSEMBLY NO. 198001

APPROVALS
R AND D: *[Signature]* E OF M: *[Signature]*

E-NUMBER

PROD. NO. 6445 WD

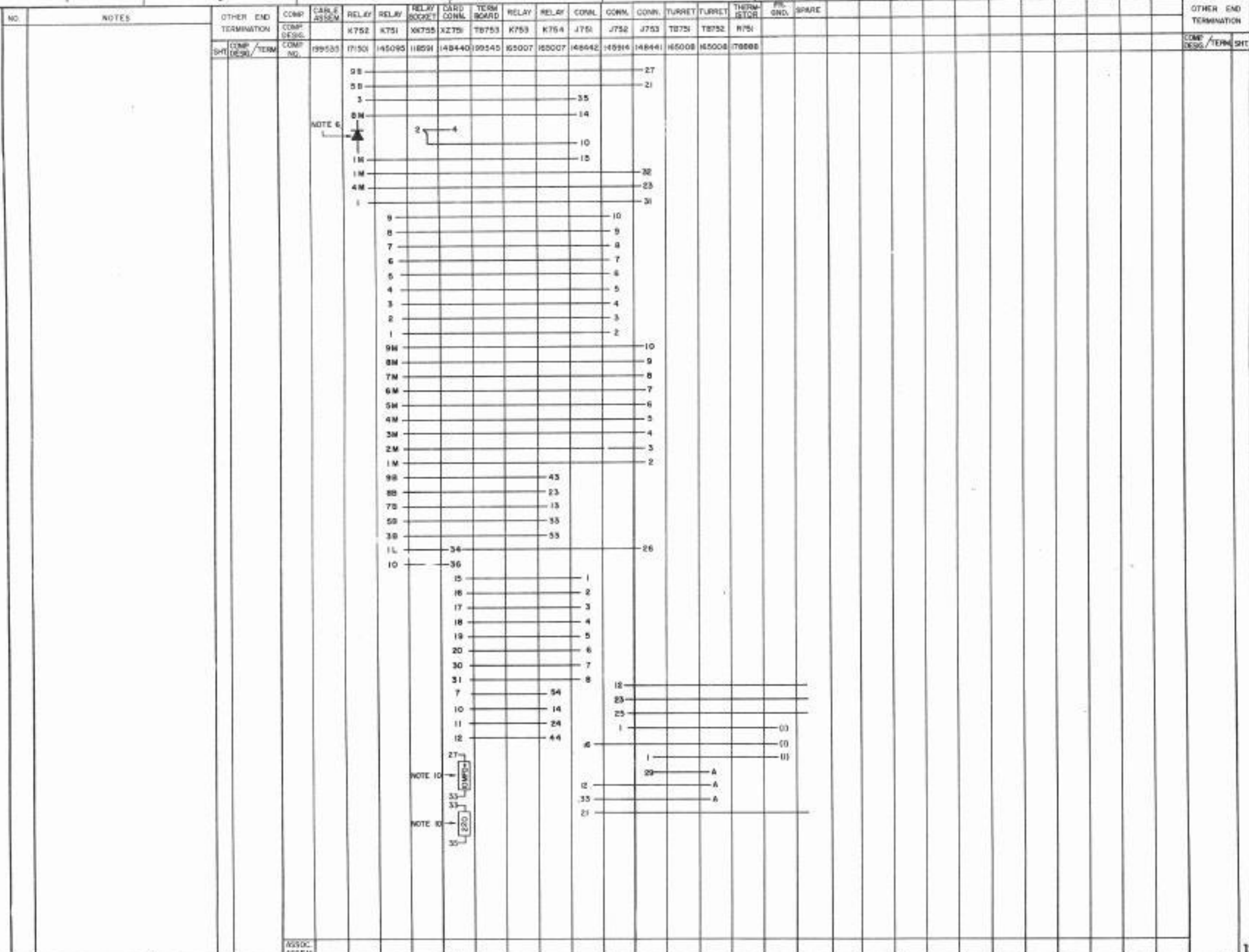
DATE 9-5-65

P.D. FILE NO. 1-A143AA

DRAWN APH CHKD. *[Signature]*
ENGD. JHH APPD. *[Signature]*

TELETYPE CORPORATION

6445 WD



W.D. NO. 6445 WD