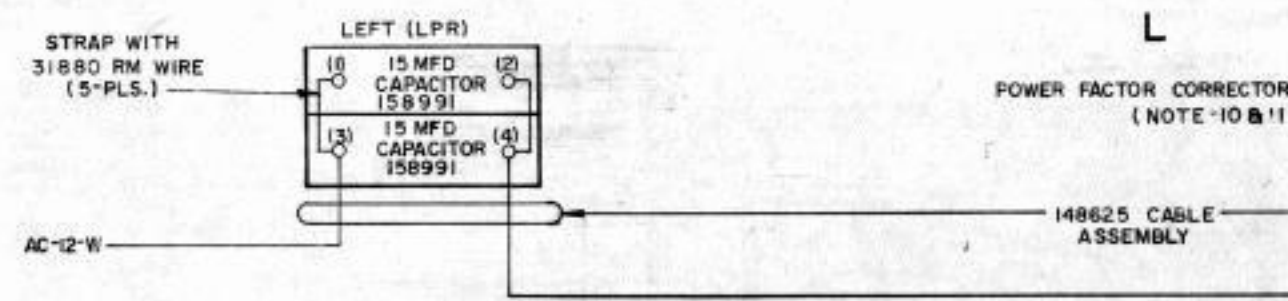
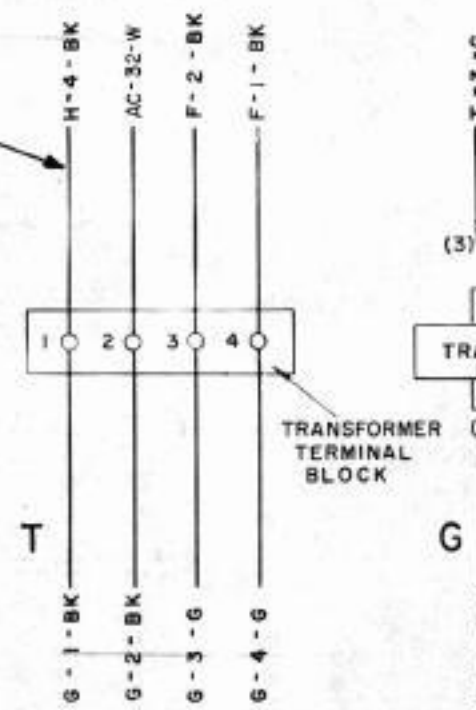
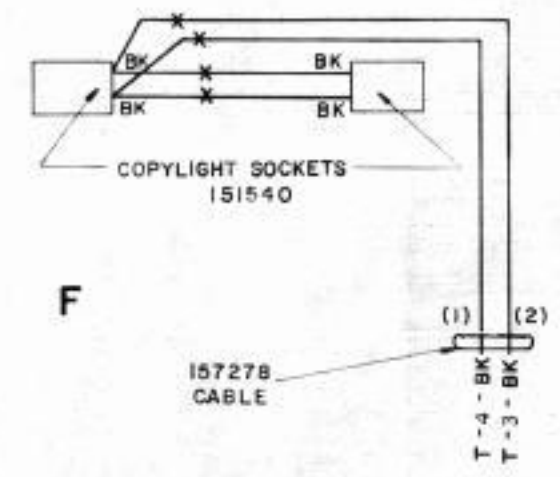


R-3 1/2 32 1/4 X 10 3/4

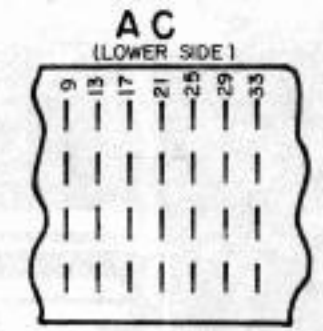
NO.	NOTES
1.	<p>WIRING LEGEND</p> <p>— DISTANT TERMINATING AREA</p> <p>— DISTANT TERMINAL DESIGNATION</p> <p>A-I-W</p> <p>— WIRE COLOR CODE</p>
2.	<p>COLOR CODE</p> <p>BK BLACK</p> <p>BL BLUE</p> <p>BR BROWN</p> <p>G GREEN</p> <p>O ORANGE</p> <p>P PURPLE</p> <p>R RED</p> <p>S SLATE</p> <p>W WHITE</p> <p>Y YELLOW</p>
3.	<p>—*— DENOTES SPLICED AND TAPED WIRES.</p>
4.	<p>TERMINAL DESIGNATIONS IN PARENTHESIS NOT SHOWN ON COMPONENTS.</p>
5.	<p>ASSOCIATED WIRING DIAGRAMS</p> <p>6492 SCHEMATIC</p>
6.	<p>CABINET POWER CIRCUIT WIRED FOR 115 V.A.C. 60 Hz OPERATION ONLY. THE ASSOCIATED ELECTRICAL SERVICE UNIT MUST BE WIRED FOR A.C. OPERATION.</p>
7.	<p>NECESSARY STRAP CONNECTIONS AT THE CABINET TERMINAL BLOCKS ARE SHOWN ON THE ASSOCIATED ELECTRICAL SERVICE UNIT WIRING DIAGRAM.</p>
8.	<p>ASSOCIATED CABLES: 148625, 148636, 148621, 157278.</p>
9.	<p>ROUTE BUSY INDICATOR CABLE ALONG COPYLIGHT CABLE AND COPYLIGHT SWITCH CABLES. FASTEN INDICATOR AND SWITCH CABLES UNDER LOWER LEFT HAND MOUNTING SCREW FOR THE RIGHT CABINET HINGE WITH CABLE CLAMPS, LOCK WASHERS, AND SCREWS SUPPLIED WITH THE CABINET.</p>
10.	<p>THIS COMPONENT NOT PART OF LAC 224 PART OF VCL 501</p>
11.	<p>FOR USE WITH 60 Hz SYNCHRONOUS MOTORS ONLY</p>

5.5 VOLT COPYLIGHT SYSTEM



CABINET TERMINAL BLOCK (SEE NOTE 7,10)

TERM NO.	TERM	COLOR
10	L-8	G
11	L-7	BK
12	L-3	W
24	H-3	G
27	H-5	BK
32	T-2	W
39	DRAINWIRES	
40	DRAINWIRES	



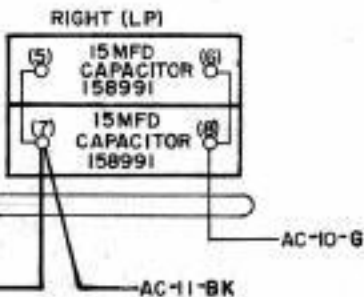
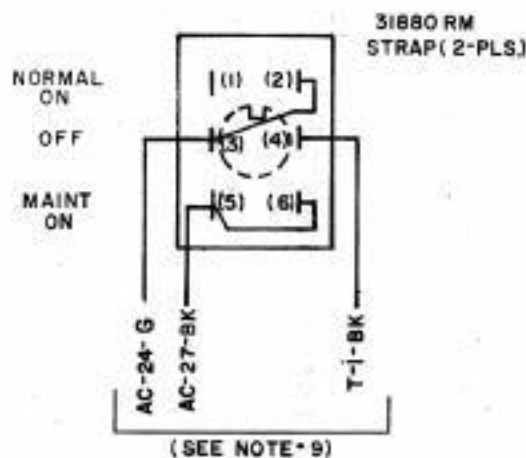
REVISIONS

ISSUE	DATE	AUTH. NO.
2	1-19-64	35993
3	2-5-62	03195

5.5 V.A.C. SECONDARY

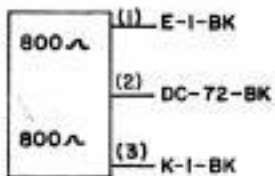
V.A.C. PRIMARY

H
155022
COPYLIGHT SWITCH



TERM NO.	TERM	COLOR
72	R-2	BK.
89	E-2	W
94	K-2	G
118	DRAINWIRE	

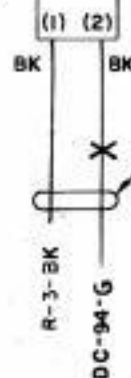
R
74691
RESISTOR
(NOTE 10)
(PART OF 148621 CABLE ASSEMBLY)



E
BUSY INDICATOR
LAMP SOCKET
151540



K
LOW TAP
LAMP SOCKET
151540



148621
CABLE
ASSEMBLY
(SEE NOTE 10)

ACTUAL
WIRING DIAGRAM
FOR MODEL 28
PAGE PRINTER
CABINET
LAC 224 AS
PART OF
VCL 501

APPROVALS

R B D E OF M
[Handwritten signatures]

DATE 12-7-62

R.D. FILE NO. 72-304905A

PROD. NO. 6494WD

E NO.

DRWN. G.R.S. CHKD *[Handwritten]*

ENG. P.L. MAPPD.

TELETYPE
CORPORATION

6494WD