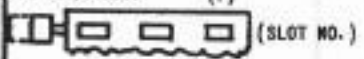
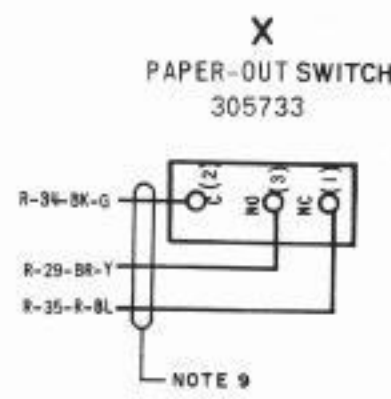
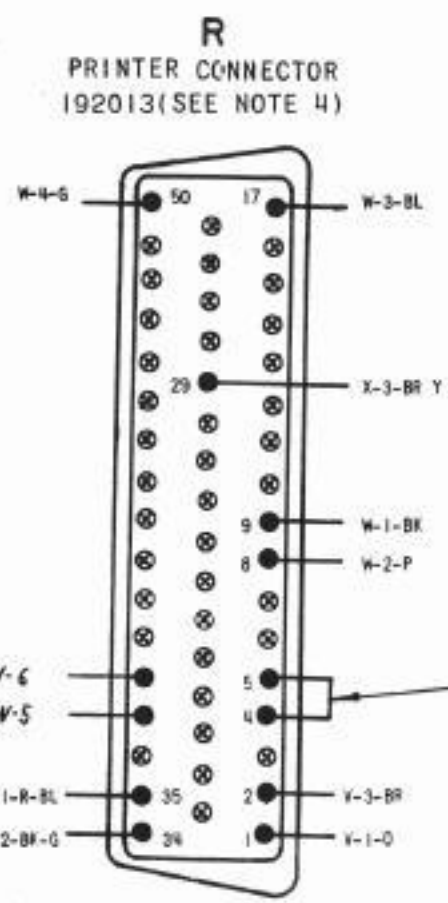
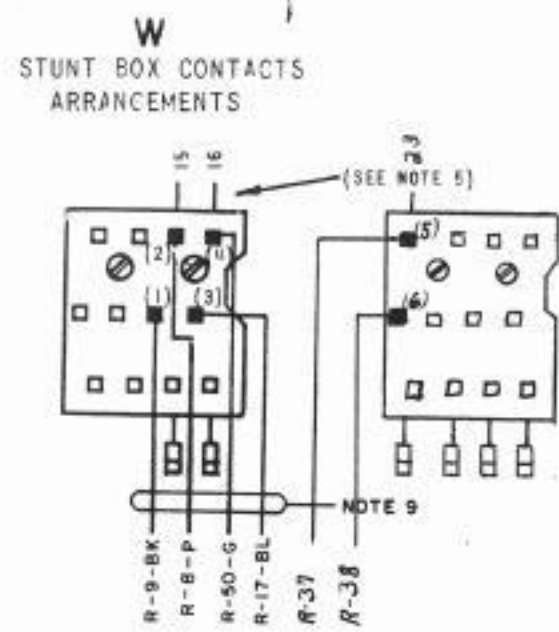
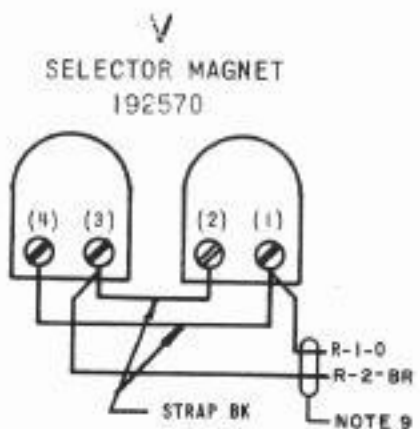


- NO. NOTES
1. WIRING LEGEND:
 DISTANT TERMINATING AREA
 DISTANT TERMINATING DESIGNATION
 A-1-W-BL
 WIRE COLOR CODE
 2. COLOR CODE:
 BK-BLACK R-RED
 BR-BROWN Y-YELLOW
 BL-BLUE P-PURPLE
 G-GREEN W-WHITE
 S-SLATE O-ORANGE
 3. CONTACTS VIEWED FROM SOLDER TERMINAL ENDS.
 4. CONNECTOR VIEWED FROM BOTTOM.
 5. NUMBERS AT TOP OF STUNT BOX CONTACTS REFER TO SLOT POSITION IN STUNT BOX.
 6. CONTACT ARM (F)
 (SLOT NO.)
 STRAIGHT F CONTACT NORMALLY CLOSED
 CROOKED F CONTACT NORMALLY OPEN
 7. CONTACTS SHOWN IN UNOPERATED OR DE-ENERGIZED POSITION.
 8. SELECTOR COIL IS WIRED FOR .500 AMP. OPERATION
 9. ASSOCIATED CABLE ASSEMBLIES:
 CABLE ASSEMBLY-197044 (AREA R-W)
 CABLE ASSEMBLY-192484 (AREA R-V)
 305677 (AREA X-R)
 10. FOR TELETYPE PERSONNEL REFERENCE: SPEC. NO'S 69335 & 60,4613.
 11. TERMINAL DESIGNATION ENCLOSED IN PARENTHESIS ARE NOT MARKED ON COMPONENT.



7989WD

REVISIONS		
ISSUE	DATE	AUTH. NO.
1	9-2-66	17783-R
2	3-5-69	96887

MODIFIED FOR
EAX PL-2
3-6-74

ACTUAL
WIRING DIAGRAM
FOR
MODEL 35
TYPING UNIT
STUNT BOX-TUP
LP831 AND
LP855

(FRICTION FEED)

APPROVALS

D AND R	E OF M
<i>[Signature]</i>	<i>[Signature]</i>
S NUMBER	
PROD NO 7989WD	
DATE 5-15-66	
P.O. FILE NO 1-A151 ALIE	
DRAWN 006	CHKD Tol
ENGD. BHL	APPD JMS

TELETYPE CORPORATION