

BELL SYSTEM PRACTICES
Teletypewriter and Data Stations

ADDENDUM P34.301
Issue 1, October, 1963
AT&TCo Standard

28-TYPE TELETYPEWRITER

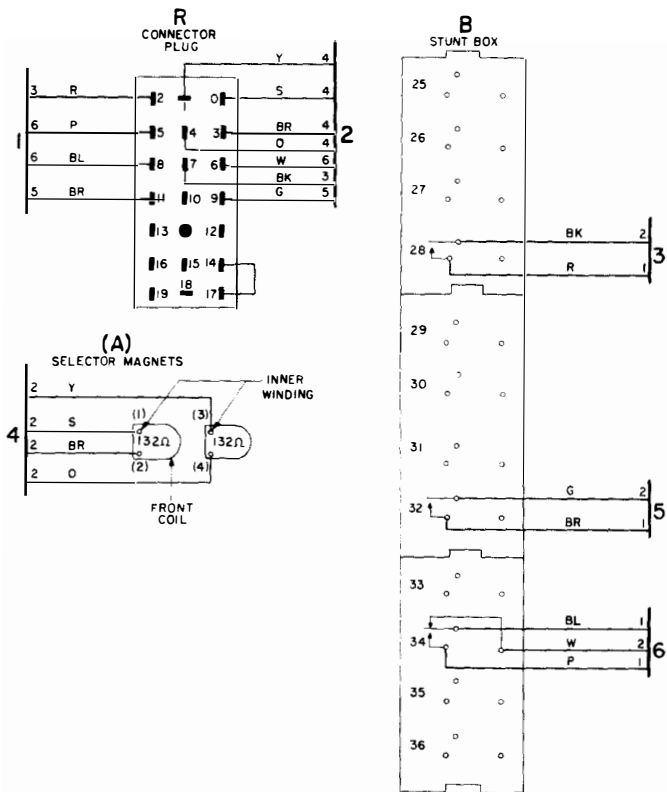
TYPING UNIT, MOTOR UNIT AND BASE

WIRING DIAGRAM

1. GENERAL

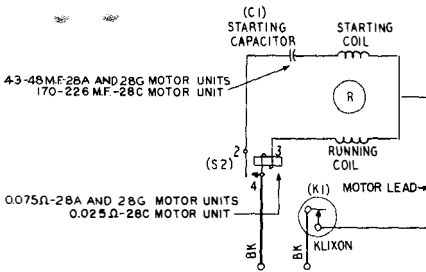
1.001 This addendum supplements Section P34.301, Issue 8.

1.002 This addendum is issued to add the wiring for the
(a) 28AG and 28AH typing units, (b) 28G motor unit
and (c) 28K and 28L bases. The 28K base is for use in the wall-
mounted sets and the 28L base is for 28RO teletypewriters.

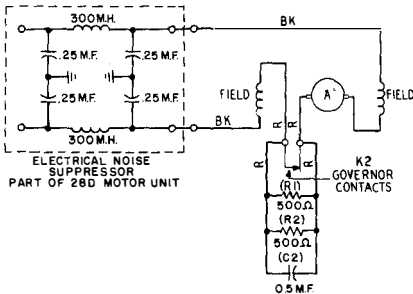


NOTES:
 1. LEADS NOT IDENTIFIED ARE RM STRAPPING WIRES, RM TUBING.

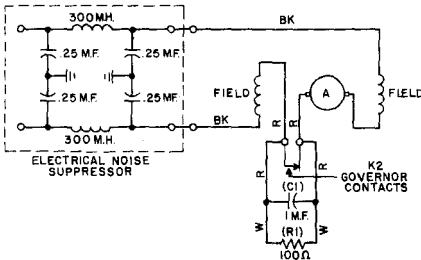
28AB, 28AD, 28AG and 28AH Typing Units



28A, 28C AND 28G MOTOR UNITS



28B AND 28D MOTOR UNITS

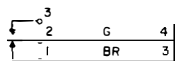


NOTES:

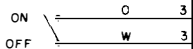
1. A TP91228 GROUND STRAP IS CONNECTED BETWEEN THE MOTOR FRAME AND A MOTOR MOUNTING SCREW
2. THE 28E MOTOR UNIT OPERATES ON 48V DC.

28E MOTOR UNIT

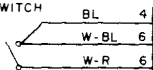
SIGNAL LINE
BREAK SWITCH



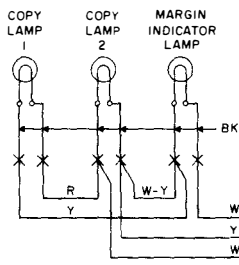
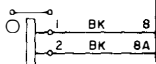
POWER SWITCH



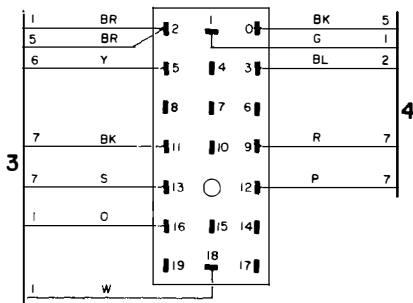
MARGIN INDICATOR
SWITCH



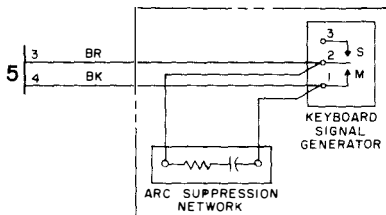
SIGNAL BELL



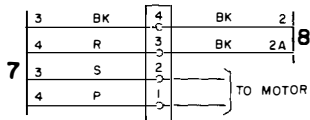
KEYBOARD CONNECTOR
(MALE)



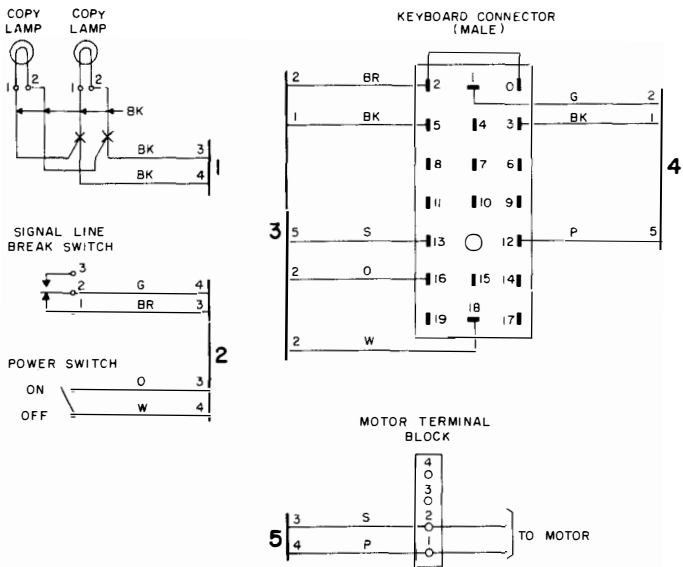
CONTACT BOX ASSEMBLY



MOTOR
TERMINAL BLOCK



28K Teletypewriter Base



28L Teletypewriter Base

BELL SYSTEM PRACTICES
Teletypewriter and Data Stations

SECTION P34.301
Issue 8, December, 1962
AT&TCo Standard

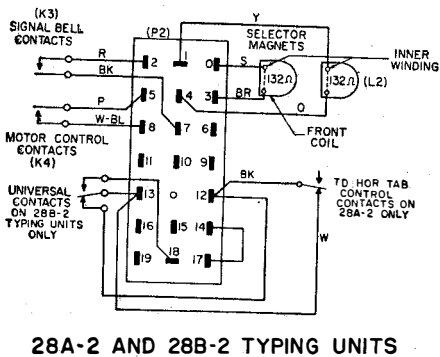
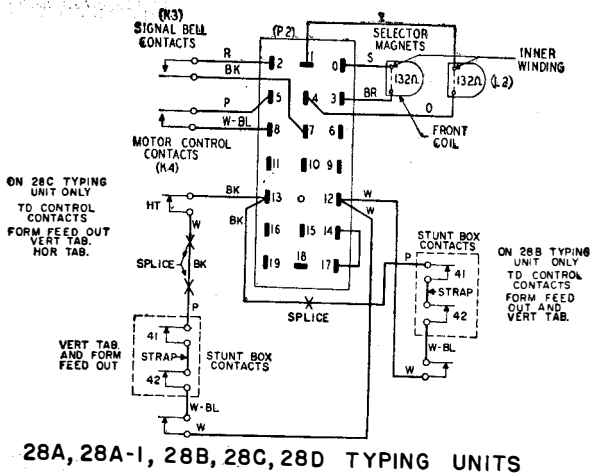
28-TYPE TELETYPEWRITER

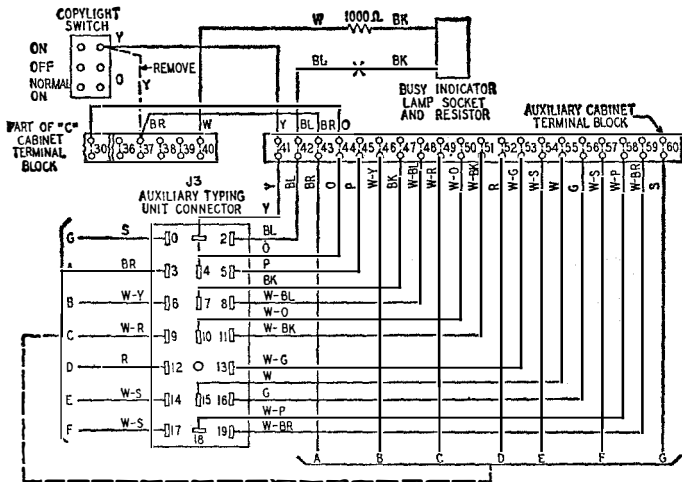
TYPING UNIT, MOTOR UNIT AND BASE

WIRING DIAGRAM

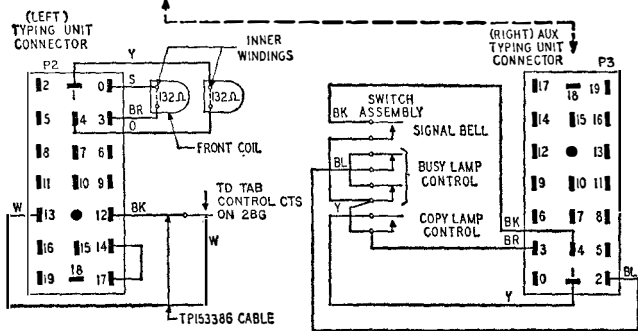
1. GENERAL

- 1.01 This section shows the wiring diagram of the 28-type typing units, motor units and teletypewriter bases.
- 1.02 This section is reissued to add the wiring of the 28J, 28J-1, 28U, 28W, 28AB, 28AC, 28LF typing units, and the 28H and 28H-1 teletypewriter bases. The drawing showing the wiring of the 28L, 28S and 28T typing units has been reissued to add horizontal tabulation contacts, vertical tabulation and form feed-out contacts. Note 2 has been added to the drawing showing the wiring of the 28LB, 28LC, 28LD, 28LE and 28LF typing units.





MODIFICATION OF WIRING OF 28B, C, D & E TTY CABINETS
USING PARTS FURNISHED WITH 28E, F, & G TYPING UNITS

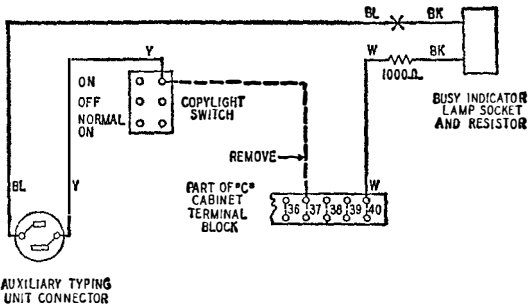


28E, F & G TYPING UNITS

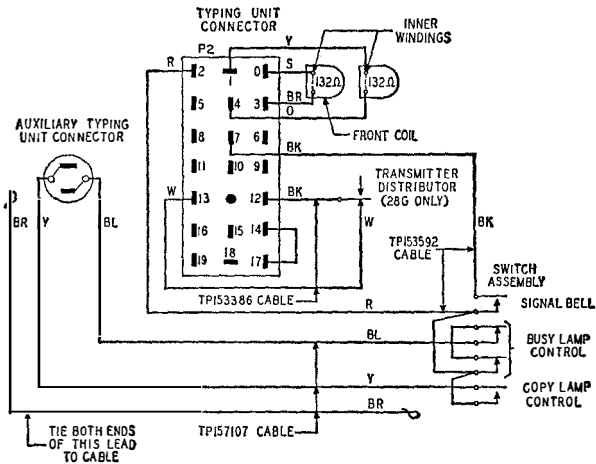
28-TYPE TELETYPEWRITER
TYPING UNIT,
MOTOR UNIT
AND BASE
WIRING
DIAGRAM

P34.301

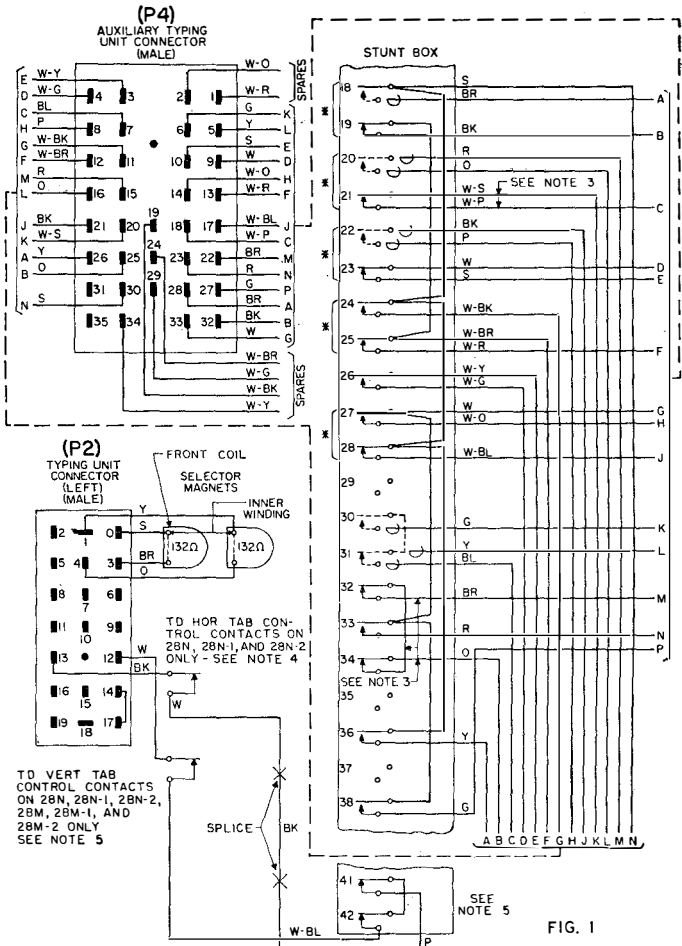
Page 3



**MODIFICATION OF WIRING OF 28 TTY CABINET
USING PARTS FURNISHED WITH 28E, F & G TYPING UNITS
AUGUST 1955 PRODUCTION**



**28E, F & G TYPING UNITS
WIRING FOR UNITS AUGUST 1955 PRODUCTION**



28H, 28H-1, 28H-2, 28M, 28M-1, 28M-2, 28N, 28N-1, 28N-2 Typing Units

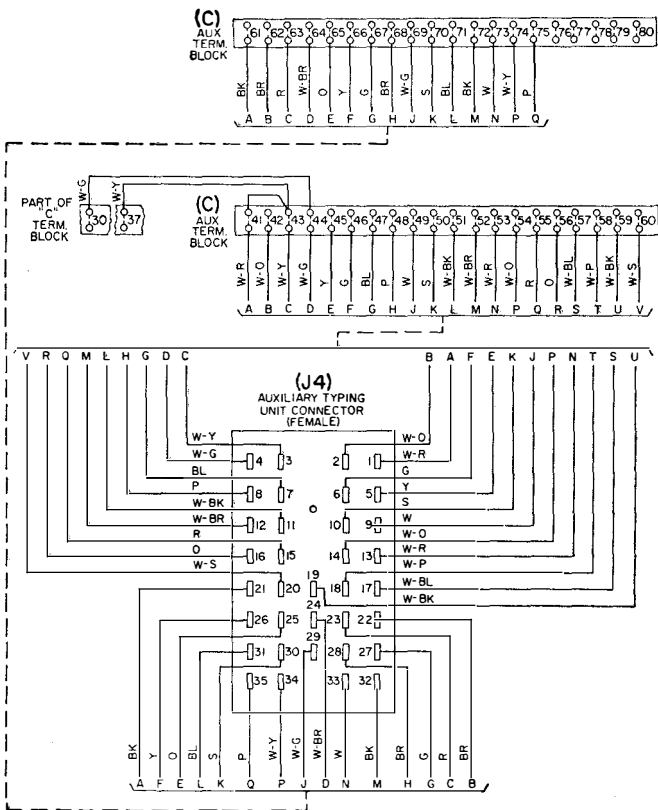


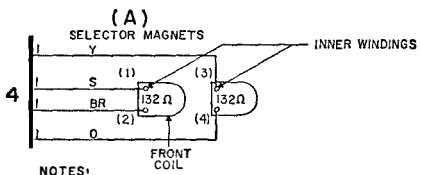
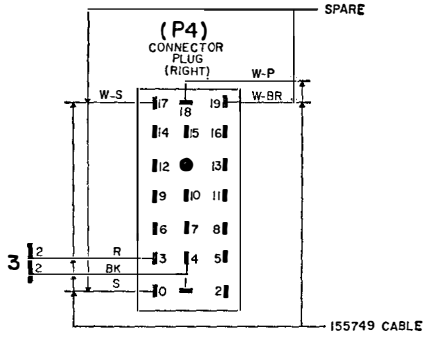
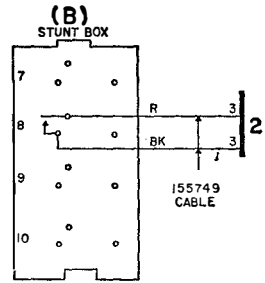
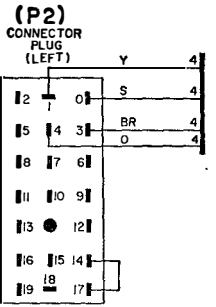
FIG. 2

28H, 28H-1, 28H-2, 28M, 28M-1, 28M-2, 28N, 28N-1, 28N-2
Typing Units

NOTES•

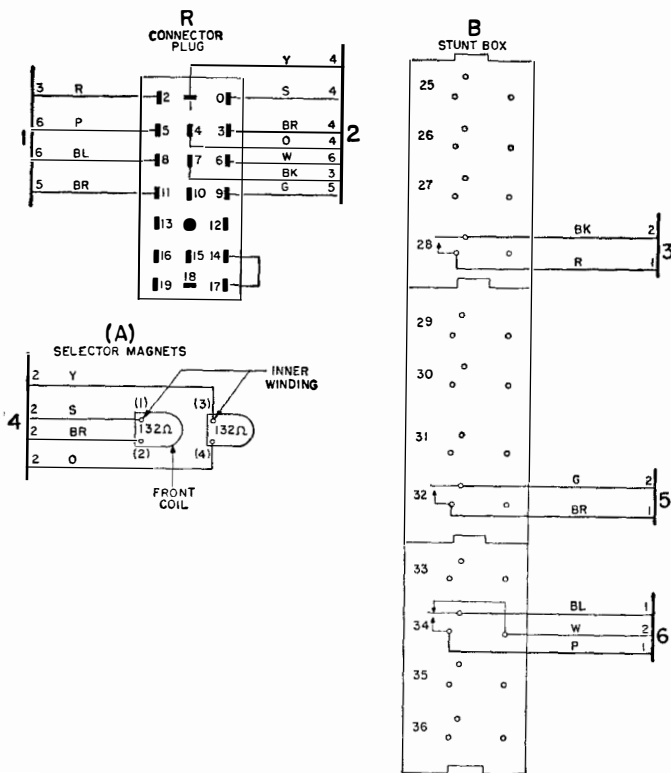
1. * BOTH CONTACTS OF A PAIR OPERATE FROM THE FUNCTION LEVER IN THE HIGHER NUMBER SLOT.
2. DOTTED CONTACTS ARE OPTIONAL AND ARE PROVIDED WHEN SPECIFIED. WIRING IS RUN FOR ALL OPTIONAL FEATURES.
3. THESE LEADS NOT REQUIRED ON 28N-1 OR 28N-2 TYPING UNITS. THEY ARE TO BE TAPED AND TIED BACK TO CABLE. OMIT STRAP BETWEEN CONTACTS 32 AND 34.
4. TD HORIZONTAL TABULATION CONTROL CONTACTS ARE PART OF 28N, 28N-1, AND 28N-2 TYPING UNITS ONLY. ON 28M, 28M-1, AND 28M-2 THE WHITE WIRE CONNECTED TO ONE SIDE OF THESE CONTACTS IS CONNECTED TO TERMINAL 13 ON THE (P2) CONNECTOR.
5. TD VERTICAL TABULATION CONTROL CONTACTS AND FORM FEED OUT CONTACTS WITH ASSOCIATED WIRING ON STUNT BOX (41 AND 42) ARE PART OF 28M, 28M-1, 28M-2, 28N, 28N-1, AND 28N-2 TYPING UNITS ONLY.

**28H, 28H-1, 28H-2, 28M, 28M-1, 28M-2, 28N, 28N-1, 28N-2
Typing Units**



NOTES:
1. LEADS NOT IDENTIFIED ARE RM STRAPPING WIRES, RM TUBING.

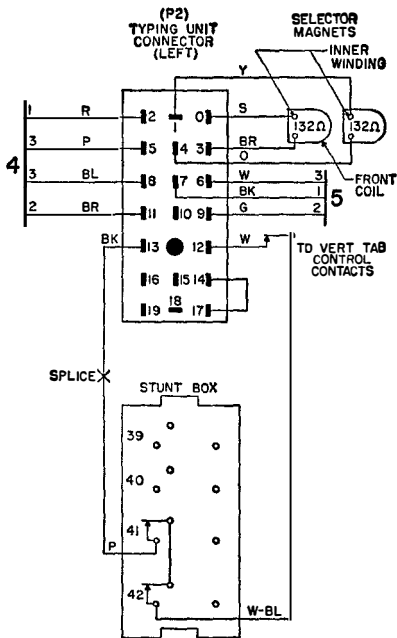
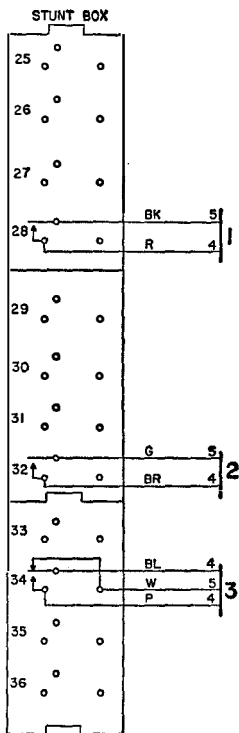
28J and 28J-1 Typing Units



NOTES:
 L LEADS NOT IDENTIFIED ARE RM STRAPPING WIRES, RM TUBING.

28AB and 28AD Typing Units

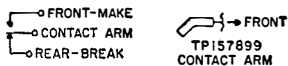
28-TYPE TELETYPEWRITER
 TYPING UNIT,
 MOTOR UNIT
 AND BASE
P34.301
 WIRING
 DIAGRAM
 Page 15



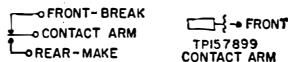
NOTES:

1. LEADS NOT IDENTIFIED ARE RM STRAPPING WIRE, RM TUBING.

2. CONTACT ARM LIFTED BY FUNCTION LEVER

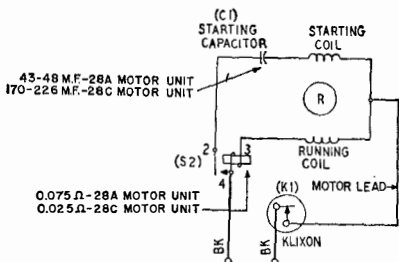


3. CONTACT ARM LOWERED BY FUNCTION LEVER

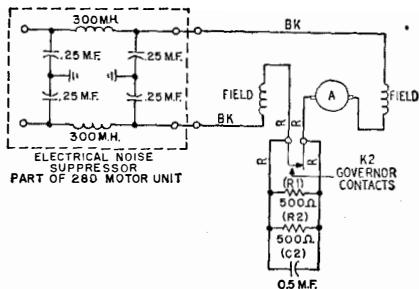


4. "FRONT" AND "REAR" REFER TO DIRECTIONS AS SEEN FROM THE KEYBOARD; I.E., THE REAR CONTROL IS AT THE INSULATOR END OF THE CONTACT ARM. FOLLOW THE SAME FRONT AND REAR CONVENTIONS FOR SINGLE (NON-TRANSFER) CONTACTS.

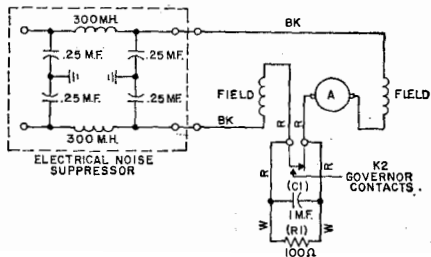
28AC Typing Unit



28A AND 28C MOTOR UNITS



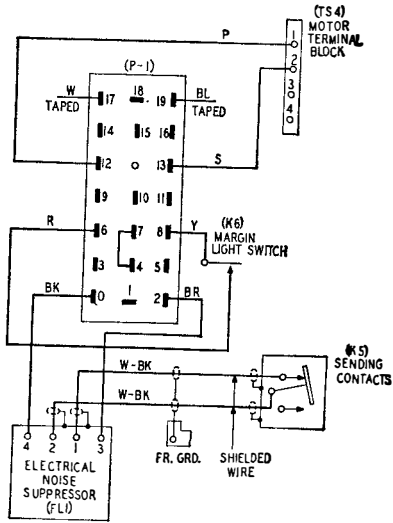
28B AND 28D MOTOR UNITS



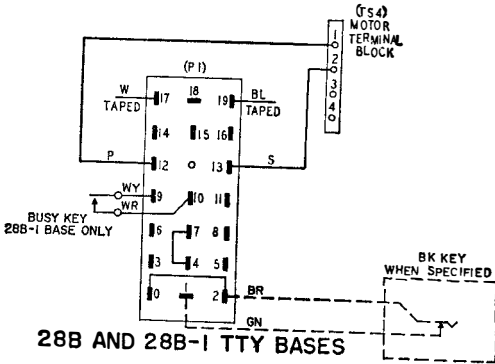
28E MOTOR UNIT

NOTES:

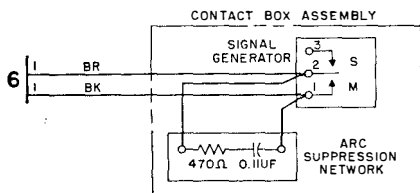
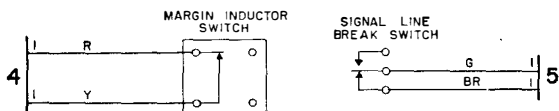
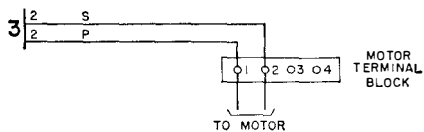
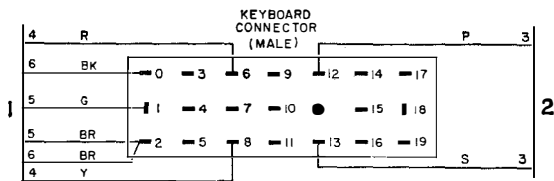
1. A TP91228 GROUND STRAP IS CONNECTED BETWEEN THE MOTOR FRAME AND A MOTOR MOUNTING SCREW
2. THE 28E MOTOR UNIT OPERATES ON 48V DC.



28A TTY BASE



28B AND 28B-1 TTY BASES



28J Teletypewriter Base



—