

BELL SYSTEM PRACTICES
Teletypewriter and Data Stations

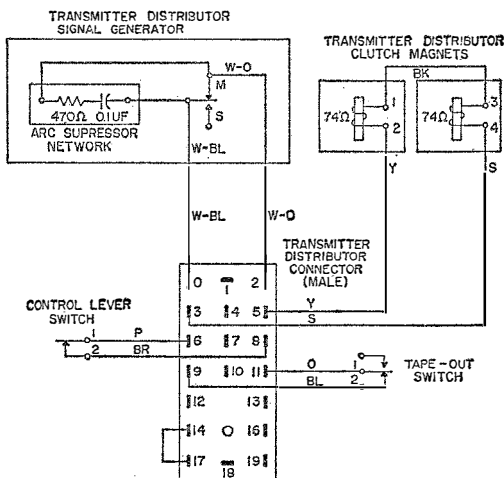
SECTION P34.315
Issue 4, December, 1961
AT&T Co Standard

28E, F, G, H, H-1, H-2 AND LA
TRANSMITTER-DISTRIBUTOR UNITS
WIRING DIAGRAM

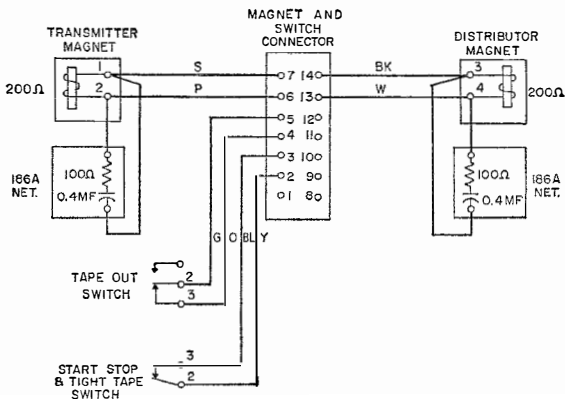
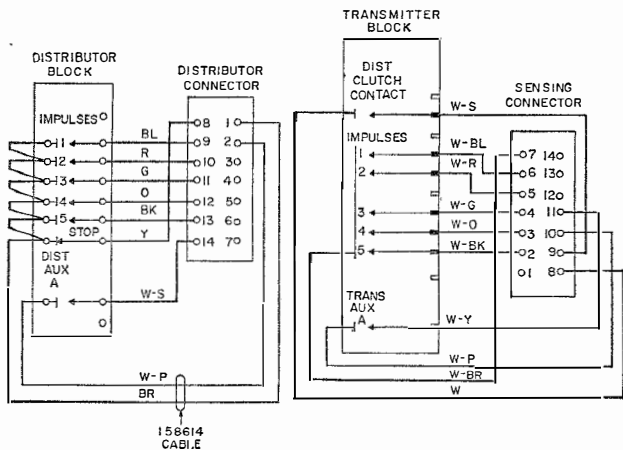
1. GENERAL

1.01 This section shows the wiring of the 28E, F, G, H, H-1, H-2 and LA transmitter-distributor units. These units, except for the 28LA, are used with 28 automatic send-receive set or self-contained transmitter-distributor set. The 28LA unit is used with 28 automatic send-receive set only.

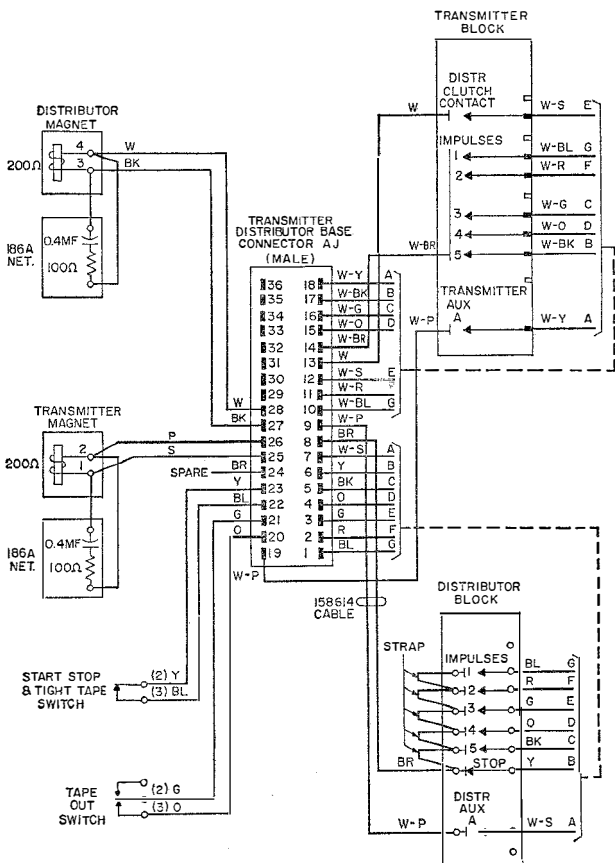
1.02 This section is reissued to add the wiring for the 28H-1 and 28H-2 transmitter-distributor units.



28E Transmitter-Distributor Unit



28F Transmitter-Distributor Unit

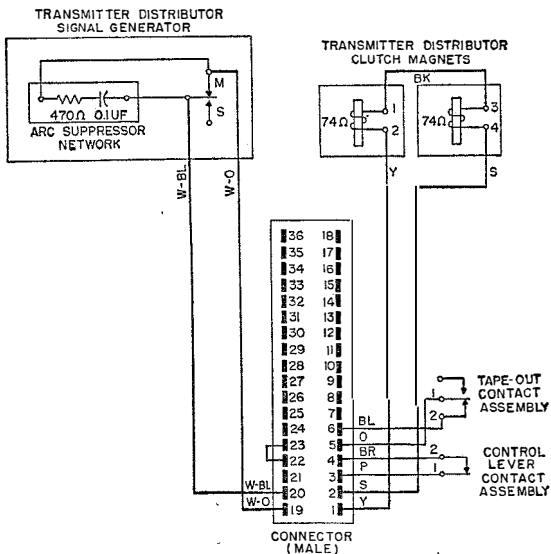


28G Transmitter-Distributor Unit

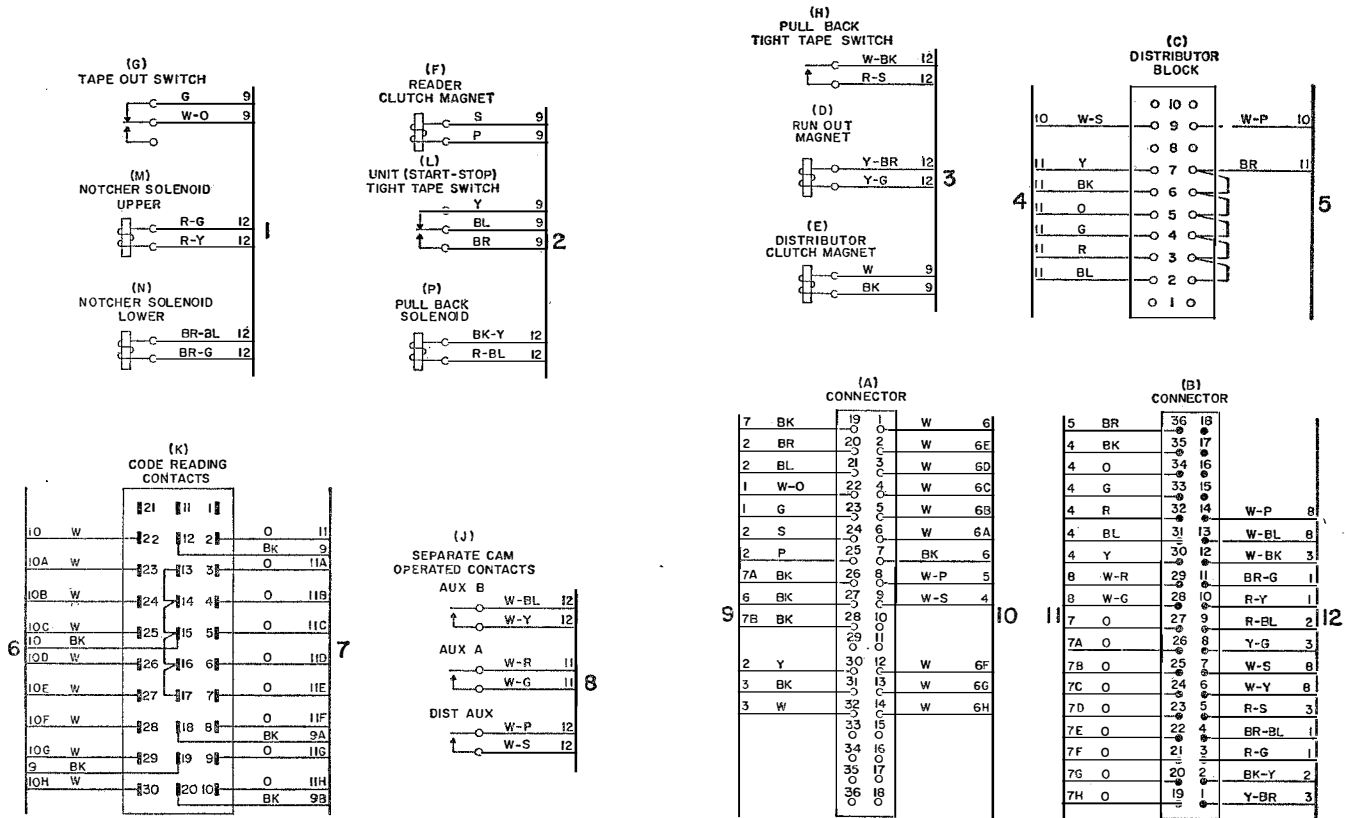
28E, F, G, H, H-1,
H-2 AND LA TRANS.-UNITS

P34.315

UNITS
WIRING
DIAGRAM



28H, 28H-1 and 28H-2 Transmitter-Distributor Units



28LA Transmitter-Distributor Unit