

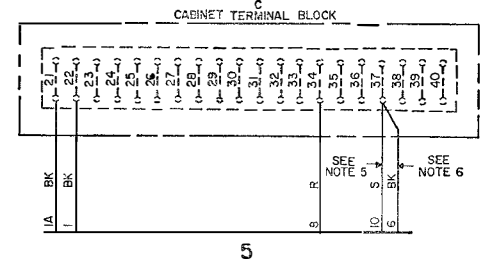
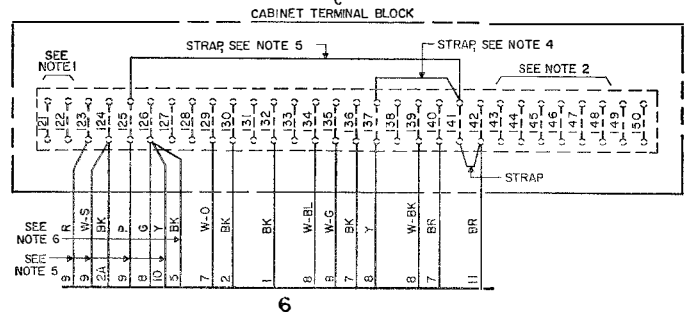
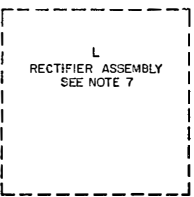
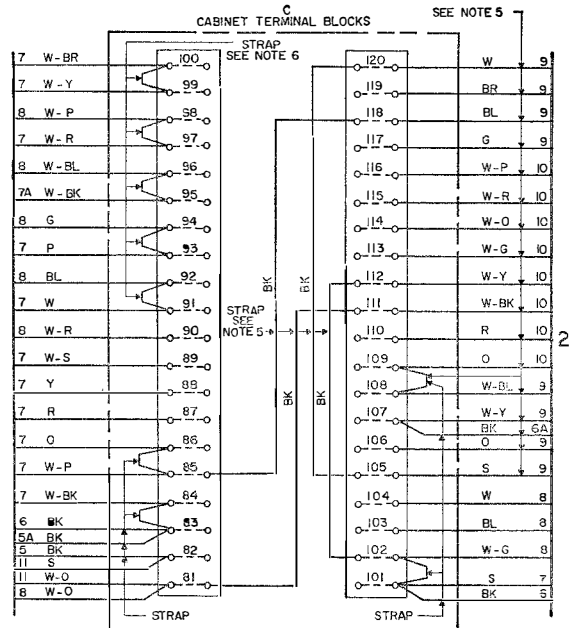
BELL SYSTEM PRACTICES
Teletypewriter and Data Stations

SECTION P34.324
Issue 1, April, 1961
AT&T Co Standard

28F CABINET
WITH 28F-1 OR 28G ELECTRICAL
SERVICE UNIT
WIRING DIAGRAM

1. GENERAL

1.01 This section shows the wiring of the 28F cabinet with the 28F-1 or 28G electrical service unit for use with pivoted head transmitter-distributor with the TP164633 or TP164640 set of parts.

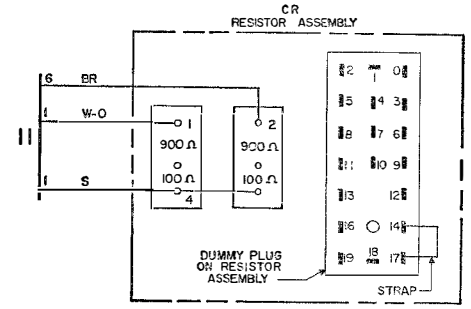


W
PIVOTED READER &
DISTRIBUTOR CONNECTOR
MALE
(164659 CABLE)

5	W-O	1	17	W-P	1
1	W	2	18	W-BL	1
1	P	3	19	G	1
1A	W-BK	4	20	BL	1
1	W-R	5	21	W-G	2
1	W-Y	6	22	W-O	1
2	S	7	23	W-BK	6
1	R	8	24	W-R	1
1	Y	9	25	W-G	5
1	W-BK	10	26	W-BL	6
1	W-P	11	27	Y	6
5	BK	12	28	G	6
1	W-S	13	29	R	5
5	BR	14	30	W	2
1	O	15	31	BL	2
1	W-BR	16	32		

Y
AUXILIARY HARDGATE
READER CONNECTOR
FEMALE
(164659 CABLE)

2	O	1	17	W-P	2
2	S	2	18	W-R	2
6	R	3	19	W-O	2
6	W-S	4	20	W-G	2
6	P	5	21	W-Y	2
6		6	22	W-BK	2
2	W-BL	7	23	R	2
2	W-Y	8	24	O	2
		9	25	S	5
		10	26	Y	6
		11	27		
2	W	12	28		
2	BR	13	29		
2	BL	14	30		
2	G	15	31		
		16	32		



NOTES:

1. TERMINALS C-121 AND C-122 RESERVED FOR PERFORATOR LO- TAPE SWITCH.
2. TERMINALS C-143 TO C-148 RESERVED FOR CABINET LAMP OPERATION.
3. WHEN THE AUXILIARY HARDGATE IS USED,CUSTOMER MUST SUPPLY EXTERNAL SWITCHING AS FOLLOWS:

NOTES (CONT)

4. TO CONTROL PIVOTED READER FROM ITS TAPE OUT CONTACTS, REMOVE THE STRAP FROM TERMINALS C-137 AND C-141 AND PROVIDE SUITABLE CIRCUITRY. THE TAPE OUT CONTACTS MAY NOT BE USED DIRECTLY.
5. THE AUXILIARY HARDGATE READER CONNECTOR, ASSOCIATED WIRING AND STRAP FROM C-125 TO C-141 ARE SUPPLIED WITH THE TP164633 SET OF PARTS ONLY.
6. LEAD FROM C-37 TO C-126 AND STRAPPING ON C-91 TO C-100 ARE SUPPLIED WITH THE TP164640 SET OF PARTS ONLY.
7. IF A 28F ESU IS INSTALLED THE TP 152950 (120 MA) RECTIFIER MUST BE REPLACED BY THE TP162361 (500 MA) RECTIFIER. IF A 28F-1 ESU IS INSTALLED THE TP162361 RECTIFIER MUST BE ORDERED.

