

BELL SYSTEM PRACTICES
Teletypewriter and Data Stations

SECTION P34.350
Issue 2, December, 1962
AT&TCo Standard

28LA ELECTRICAL SERVICE UNIT

WIRING DIAGRAM

1. GENERAL

1.01 This section shows the wiring for the 28LA electrical service unit which mounts in a 28LA teletypewriter cabinet.

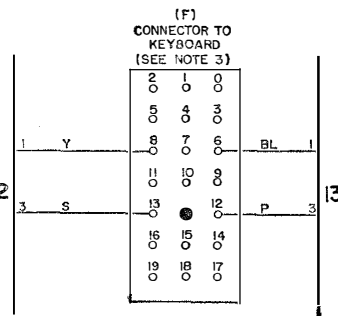
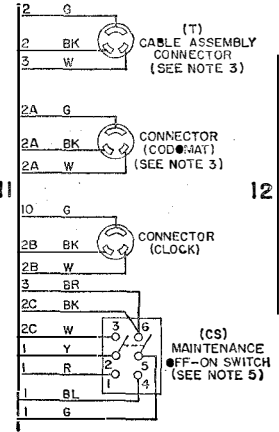
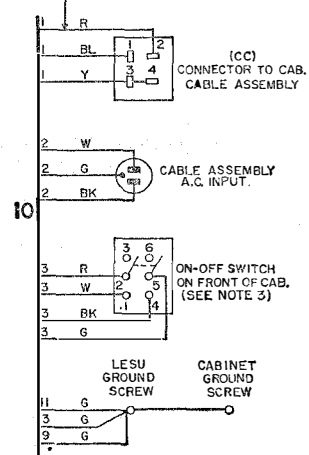
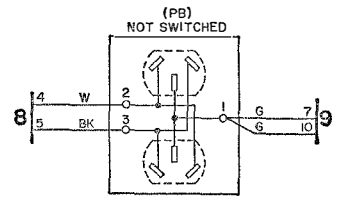
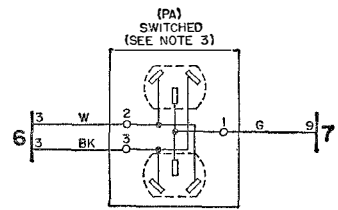
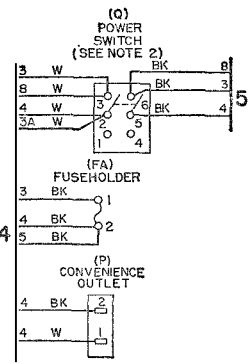
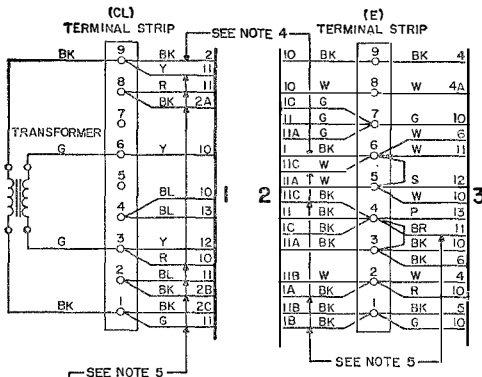
1.02 This section is reissued to remove the fuse holder (FB) and its associated wiring.

**28LA ELECTRICAL
SERVICE**

**UNIT
WIRING
DIAGRAM**

P34.350

Page 1



- NOTES:**
- UNIT WIRED FOR 115 VOLTS, 60 CYCLE A.C. POWER INPUT ONLY.
 - SWITCH Q CONTROLS ALL OF ELECTRICAL SERVICE UNIT AND RELATED OUTGOING CABLES EXCEPT FOR CONVENIENCE OUTLET (P).
 - SWITCH ON FRONT OF CABINET CONTROLS F, T & CODOMAT CABLES AND PA OUTLETS.
 - WHEN END OF LINE INDICATOR LAMP IS FURNISHED WITHOUT COPYRIGHTS.
 - WHEN END OF LINE INDICATOR LAMP IS FURNISHED WITH COPYRIGHTS.

BELL SYSTEM PRACTICES
Teletypewriter and Data Stations

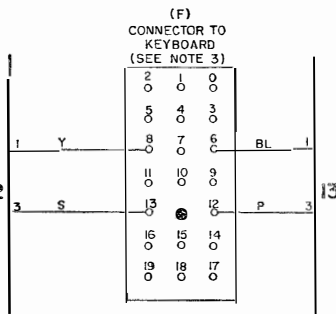
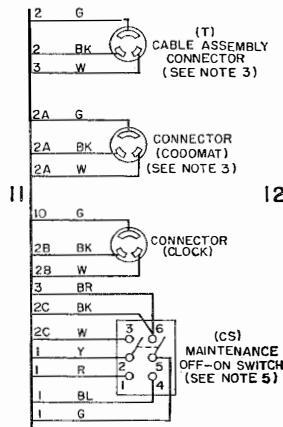
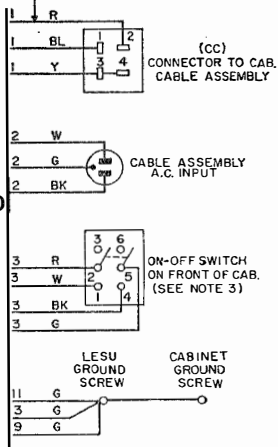
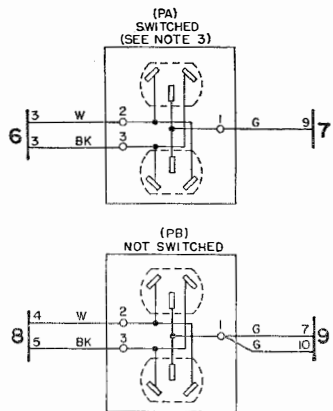
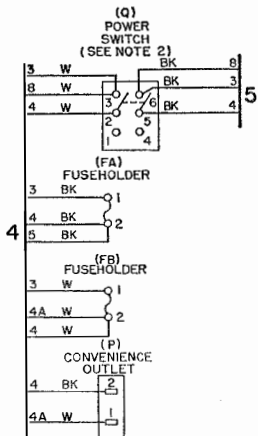
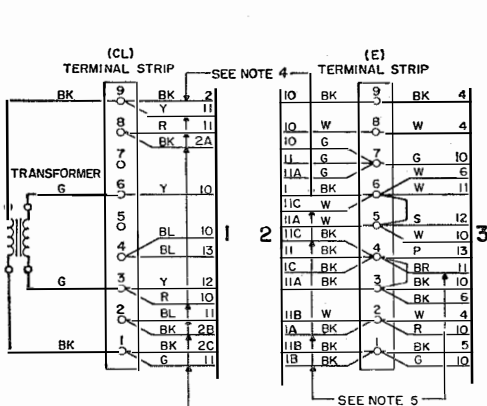
SECTION P34.350
Issue 1, November, 1961
AT&T Co Standard

28LA ELECTRICAL SERVICE UNIT

WIRING DIAGRAM

1. GENERAL

1.01 This section shows the wiring for the 28LA electrical service unit which mounts in a 28LA teletypewriter cabinet.



NOTES:

- UNIT WIRED FOR 115 VOLTS, 60 CYCLE A.C. POWER INPUT ONLY.
- SWITCH Q. CONTROLS ALL OF ELECTRICAL SERVICE UNIT AND RELATED OUTGOING CABLES EXCEPT FOR CONVENIENCE OUTLET (P).
- SWITCH ON FRONT OF CABINET CONTROLS F, T & CODOMAT CABLES AND PA OUTLETS.
- WHEN END OF LINE INDICATOR LAMP IS FURNISHED WITHOUT COPYRIGHTS.
- WHEN END OF LINE INDICATOR LAMP IS FURNISHED WITH COPYRIGHTS.