

BELL SYSTEM PRACTICES
Teletypewriter and Data Stations

SECTION P34.353
Issue 2, January, 1962
AT&T Co Standard

28LD AND 28LD-1

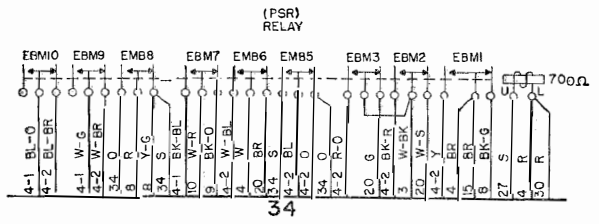
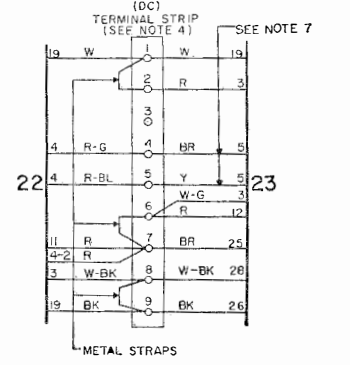
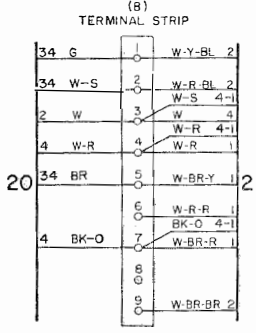
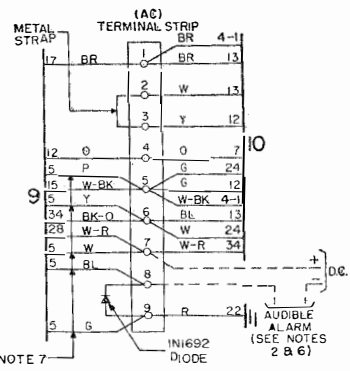
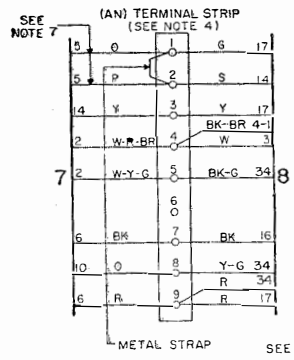
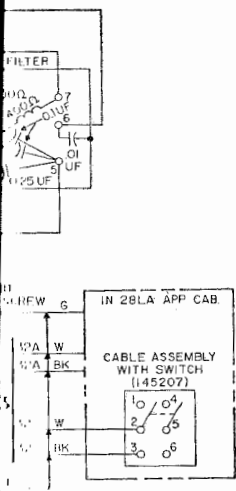
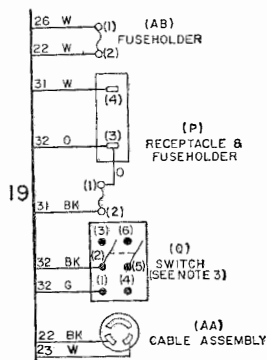
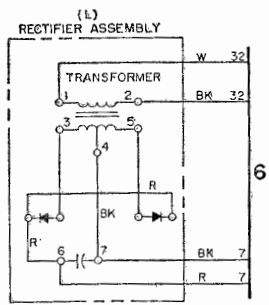
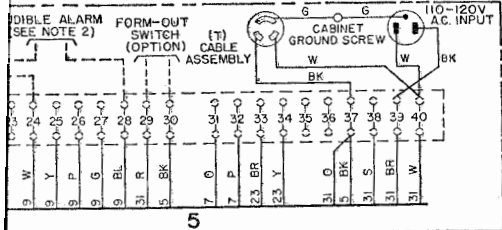
ELECTRICAL SERVICE UNITS

WIRING DIAGRAM

1. GENERAL

1.01 This section shows the wiring of the 28LD and 28LD-1 electrical service units. The 28LD unit mounts in a 28LB teletypewriter cabinet which is part of a receive set and the 28LD-1 unit mounts in a 28LA (3 tier) receive set apparatus cabinet.

1.02 This section is reissued to reverse the leads from the power plug to terminals 39 and 40 of the C terminal block on the cabinet.



NOTES:

1. THE CABLES USED ARE THE FOLLOWING:

CABLE ASSEMBLY	W/LAE 215	W/LBAC 227
F	145282	145064
R	145283	145062
S	145284	145063

2. AUDIBLE ALARM TO BE FURNISHED BY CUSTOMER.
3. SWITCH Q MUST BE IN "OFF" POSITION WHEN LESU IS INSTALLED IN 28 LA APP CAB.
4. TO CONNECT AUXILIARY PRINTER OR REPERFORATOR WITH LINE RELAY:
 - A. REMOVE STRAP CONNECTING AN-1 TO AN-2.
 - B. CONNECT + LINE SIDE OF LINE RELAY COIL TO AN-1 OR C-31.
 - C. CONNECT - LINE SIDE OF LINE RELAY COIL TO AN-2 OR C-32.
 - D. TO RECEIVE ON AUXILIARY UNIT ONLY AFTER CONFIRMATION HAS BEEN RECEIVED BY THE RECEIVING SET, CONNECT DC-4 AND DC-5 OR C-33 AND C-34 ACROSS THE AUXILIARY LINE RELAY CONTACTS.
 - E. AUXILIARY LOOP BATTERY, BIAS WINDING, MOUNTING FACILITIES, ETC. MUST BE PROVIDED BY THE CUSTOMER AND ARE NOT SHOWN.
5. CIRCUITS SHOWN FOR .060 AMP NEUTRAL SIGNAL LINE OPERATION. FOR .020 AMP OPERATION REMOVE CONNECTION BETWEEN TERMINALS 1 AND 2 AND ADD CONNECTION BETWEEN TERMINALS 3 AND 4 ON THE LINE RELAY TERMINAL BLOCK.
6. WHEN LESU IS USED IN 28LA APP CAB.
7. WHEN LESU IS USED IN 28LB APP CAB.

28LD and 28LD-1 Electrical Service Units