

4264 WD		
ISSUE	DATE	AUTH NO
2	9-24-60	CC-102
3	11-18-60	CC-102
4	5-16-62	73431
4A	9-9-64	83066
4B	3-8-65	86448

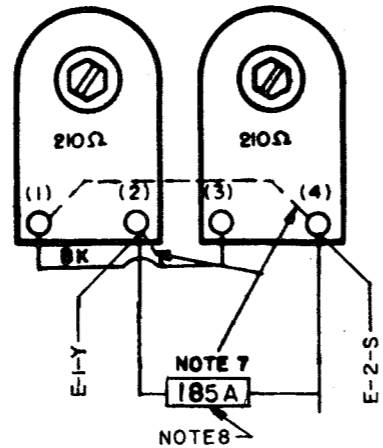
NOTES:

- 1. WIRING LEGEND:**  

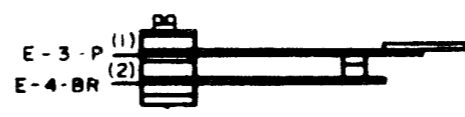
DISTANT TERMINATING AREA  
 DISTANT TERMINAL DESIGNATION  
 WIRING COLOR CODE
- 2. COLOR CODE:**  

BK - BLACK	W-BK - WHITE-BLACK
BR - BROWN	W-BR - WHITE-BROWN
R - RED	W-R - WHITE-RED
O - ORANGE	W-O - WHITE-ORANGE
Y - YELLOW	W-Y - WHITE-YELLOW
G - GREEN	W-G - WHITE-GREEN
BL - BLUE	W-BL - WHITE-BLUE
P - PURPLE	W-P - WHITE-PURPLE
S - SLATE	W-S - WHITE-SLATE
W - WHITE	
- CONNECTORS VIEWED FROM SOLDER TERMINAL ENDS
- ALL CONTACTS SHOWN IN UNOPERATED POSITION.
- ASSOCIATED CABLES:**  
 173440 CABLE ASSEMBLY (LXD II)  
 307288 CABLE ASSEMBLY (LXD 29)
- THE NUMBERS ENCLOSED BY PARENTHESES ARE USED FOR REFERENCE AND ARE NOT NECESSARILY SHOWN ON THE PARTS.
- UNIT EQUIPPED WITH 262 COIL ASSEMBLY (RESISTANCE 210Ω EACH). THE OPERATING CURRENT MUST BE 50 MA. 120V DC FOR EXTERNAL PULSING.  
  
 FOR 110V AC NON-PULSING OPERATION, RELOCATE STRAP ON TERMINAL (1) TO TERMINAL (2). ADD STRAP BETWEEN TERMINALS (1) AND (4) FOR PARALLEL OPERATION OF MAGNETS.
- 195377 SPARK SUPPRESSOR ASSEMBLY (185A NETWORK) USED ON LXD 29 ONLY.
- TERMINAL NO. 21 ON CONNECTOR E IS RESERVED FOR POLAR SIGNAL.
- STRAP WITH # 22 GAUGE WIRE AS INDICATED.
- FOR PROPER R.F. FILTERING, POLARITY OF FILTERS MUST BE MAINTAINED. UNIT AS FURNISHED IS WIRED FOR "MARKING" CONTACT POSITIVE (+) "SPACING" CONTACT NEGATIVE (-). TO REVERSE POLARITY OF CONTACTS SO THAT THE "MARKING" CONTACT IS NEGATIVE (-) AND "SPACING" POSITIVE (+), MAKE THE FOLLOWING CONNECTIONS IN CONTACT BOX ASSEMBLY.  
  
 1. MOVE BLACK LEAD OF BOTTOM FILTER FROM "MARKING" CONTACT TO "SPACING" CONTACT.  
 2. MOVE GREEN LEAD OF TOP FILTER FROM "SPACING" CONTACT TO "MARKING" CONTACT.

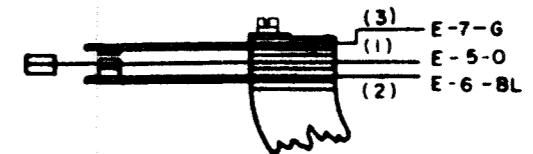
**A**  
 TRANSMITTER DISTRIBUTOR  
 CLUTCH MAGNETS



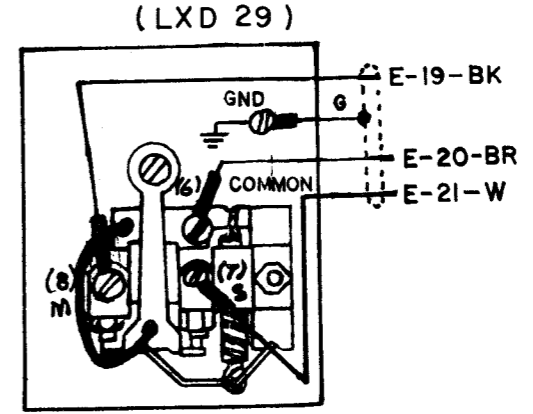
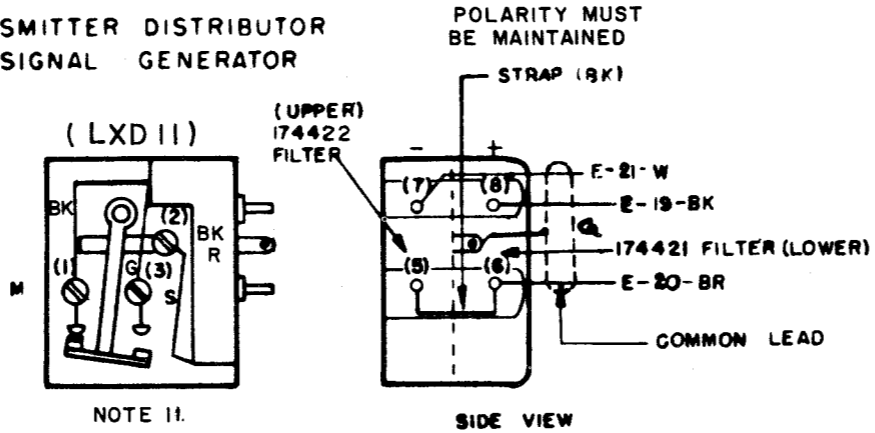
**B**  
 CONTROL LEVER  
 CONTACT ASSEMBLY



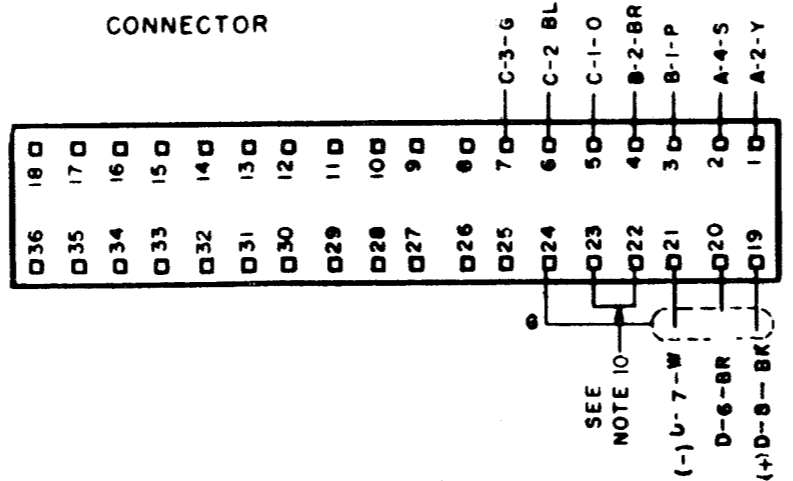
**C**  
 TAPE - OUT  
 CONTACT ASSEMBLY



**D**  
 TRANSMITTER DISTRIBUTOR  
 SIGNAL GENERATOR



**E**  
 CONNECTOR



ACTUAL  
 WIRING DIAGRAM  
 MODEL 28  
 TRANSMITTER  
 DISTRIBUTOR  
 LXD II 29

APPROVALS

D AND R	E OF M
---------	--------

E-NUMBER

PROD. NO. 4264 WD

DATE 6-8-60

PD FILE 18-A.65-2.219 A

DRAWN WPH CHKI

ENGD DCL APPD

TELETYPE CORPORATION

4264 WD

P