

ISSUE	DATE	AUTH. NO.
1	10-28-64	16259-R
2	3-26-65	86859

NOTES

- 1. WIRING LEGEND**

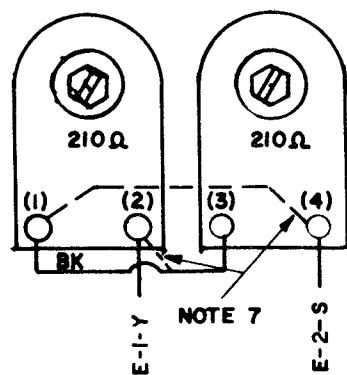
DISTANT TERMINATING AREA
 DISTANT TERMINAL DESIGNATION
 A-I-W
 WIRING COLOR CODE
- 2. COLOR CODE**

BK-BLACK	W-BK-WHITE-BLACK
BR-BROWN	W-BR-WHITE-BROWN
R-RED	W-R-WHITE-RED
O-ORANGE	W-O-WHITE-ORANGE
Y-YELLOW	W-Y-WHITE-YELLOW
G-GREEN	W-G-WHITE-GREEN
BL-BLUE	W-BL-WHITE-BLUE
P-PURPLE	W-P-WHITE-PURPLE
S-SLATE	W-S-WHITE-SLATE
W-WHITE	
- 3. CONNECTORS VIEWED FROM SOLDER TERMINAL ENDS**
- 4. ALL CONTACTS SHOWN IN UNOPERATED POSITION**
- 5. ASSOCIATED CABLES:**
173440 CABLE ASSEMBLY
- 6. THE NUMBERS ENCLOSED BY PARENTHESES ARE USED FOR REFERENCE AND ARE NOT NECESSARILY SHOWN ON THE PARTS.**
- 7. UNIT EQUIPPED WITH 262 COIL ASSEMBLY (RESISTANCE 210Ω EACH) THE OPERATING CURRENT MUST BE 50 MA 120 V DC FOR EXTERNAL PULSING**

FOR 110 AC NON-PULSING OPERATION, RELOCATE STRAP ON TERMINAL (1) TO TERMINAL (2), ADD STRAP BETWEEN TERMINALS (1) AND (4) FOR PARALLEL OPERATION OF MAGNETS
- 8. TERMINAL NO.21 ON CONNECTOR E IS RESERVED FOR POLAR SIGNAL.**
- 9. STRAP WITH #22 GAUGE WIRE AS INDICATED**
- 10. FOR PROPER R.F. FILTERING, POLARITY OF FILTERS MUST BE MAINTAINED. UNIT AS FURNISHED IS WIRED FOR "MARKING" CONTACT NEGATIVE (-) "SPACING" CONTACT POSITIVE (+). TO REVERSE POLARITY OF CONTACTS (MARKING +, SPACING-) MAKE THE FOLLOWING CHANGES:**

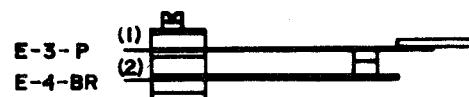
 - MOVE GREEN OF TOP FILTER FROM MARKING CONTACT TO SPACING CONTACT
 - MOVE BLACK LEAD OF BOTTOM FILTER FROM SPACING CONTACT TO MARKING CONTACT.

A
TRANSMITTER DISTRIBUTOR CLUTCH MAGNETS



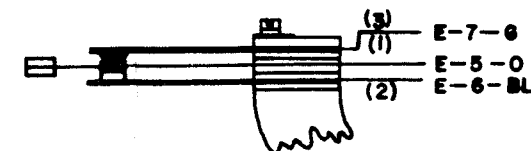
B

CONTROL LEVER CONTACT ASSEMBLY



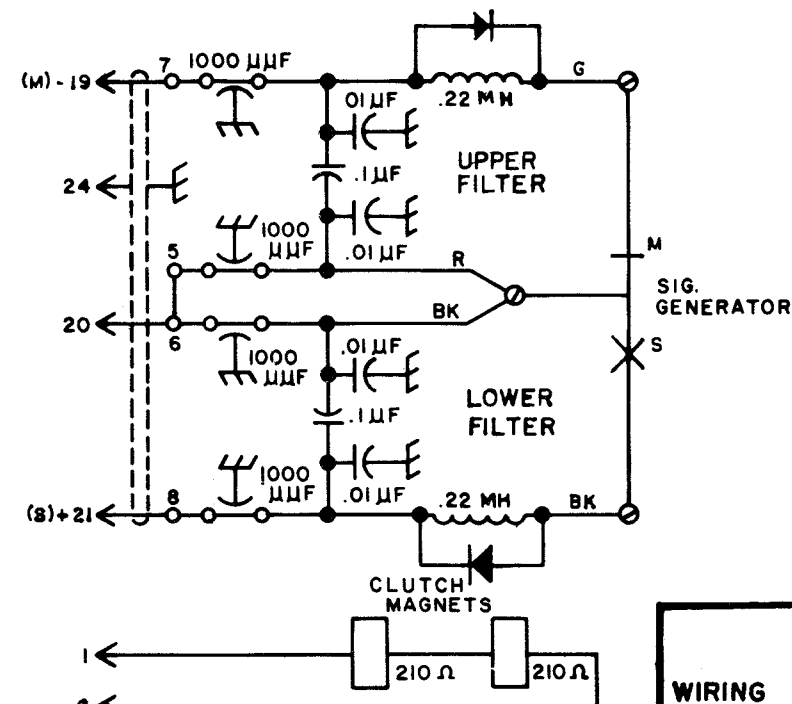
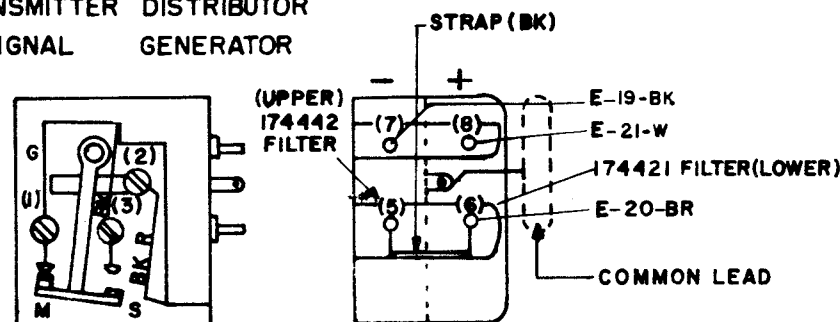
C

TAPE-OUT CONTACT ASSEMBLY



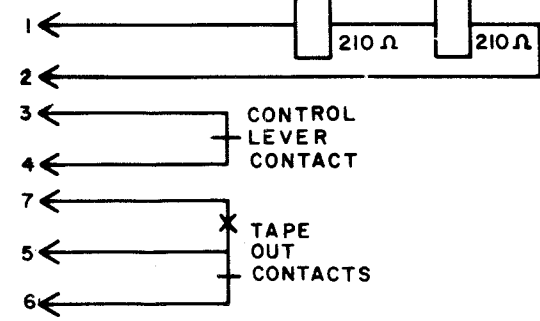
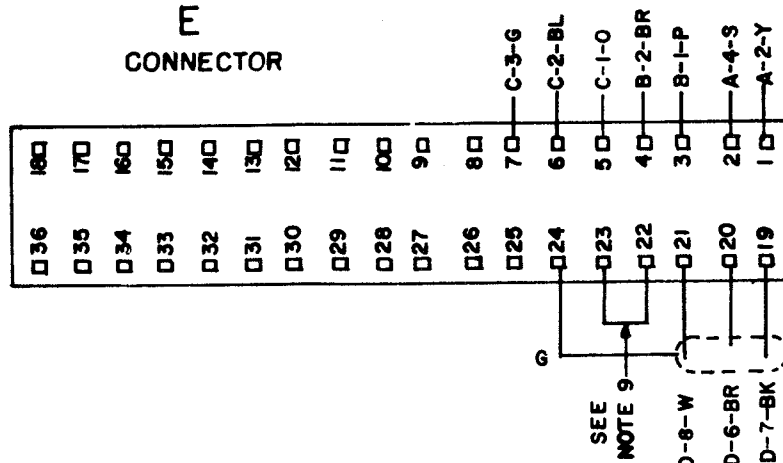
D

TRANSMITTER DISTRIBUTOR SIGNAL GENERATOR



E

CONNECTOR



WIRING DIAGRAM
MODEL 28
TRANSMITTER
DISTRIBUTOR
LXD 31

APPROVALS

D AND R E OF M

E-NUMBER

PROB. NO. 7094 WD

DATE: 11-16-64

P.D. FILE NO. 42-A2/65AA

DRAWN R.A.L. CMKD. *R.M.*

ENGD. P.P.P. APPD. *EJC*

TELETYPE CORPORATION