

35 KEYBOARD FOR AUTOMATIC SEND-RECEIVE SETS

ACTUAL WIRING DIAGRAMS

CONTENTS	PAGE	
1. GENERAL. . . . .	1	1.02 The section is reissued to include the most current wiring information. Since this is a general revision, marginal arrows have been omitted.
2. DIAGRAM INDEX. . . . .	1	1.03 The actual wiring diagrams, which are attached as a part of this publication, are listed in the diagram index. The index also lists the subject matter and current issue of each diagram.
1. GENERAL		1.04 Schematic wiring diagrams for the key-boards will be found in the appropriate section for the set with which they are used.
1.01 This section provides actual wiring diagrams for the 35 ASR Set keyboards.		2. DIAGRAM INDEX

SUBJECT	DRAWING NUMBER	ISSUE				
		2	3	4	5	6
35 Keyboard LAK803 (Bell 35A)	5811WD	Orig.				
35 Keyboards LAK806 & LAK810	6395WD	8				
35 Keyboard LAK805	6454WD	6				
35 Keyboards LAK804 & LAK811	6479WD	6				
Keyboards LAK808 & LAK43	6504WD	3				

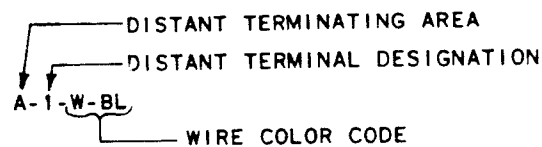
5811 WD

REVISIONS

ISSUE	DATE	AUTH. NO.

NO. NOTES

1. WIRING LEGEND:



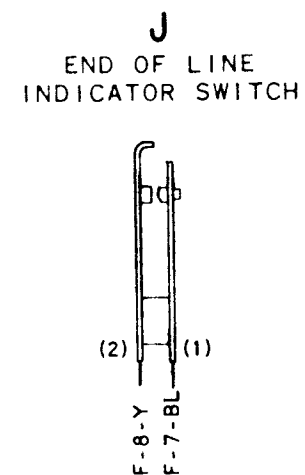
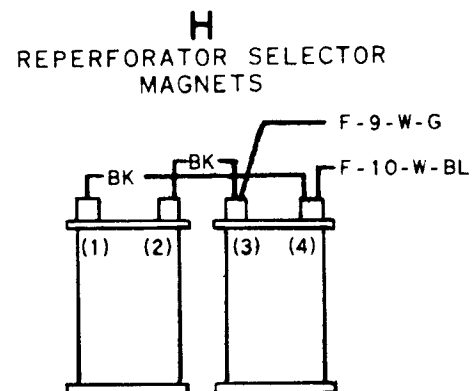
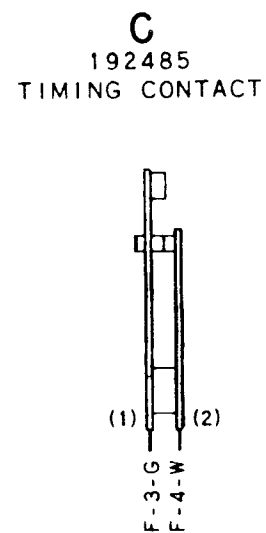
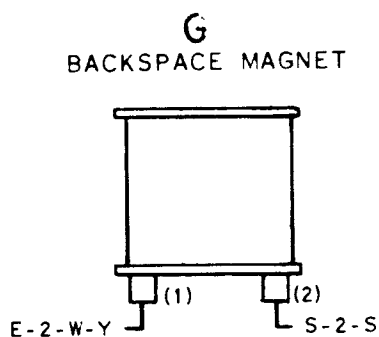
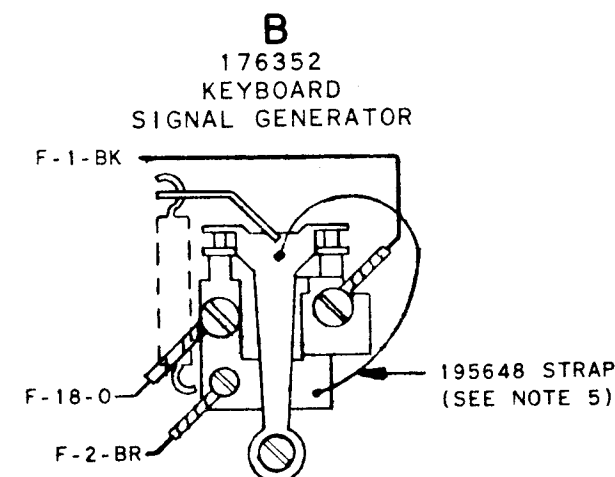
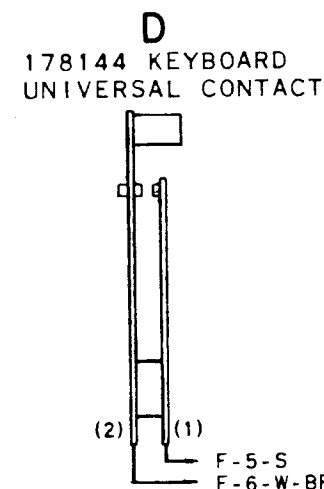
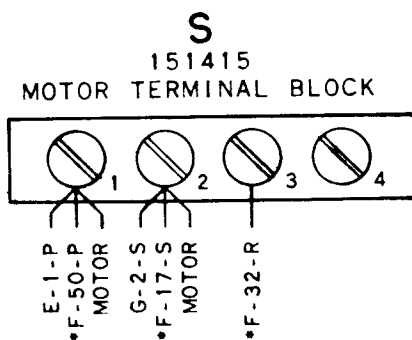
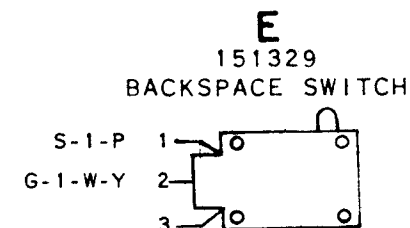
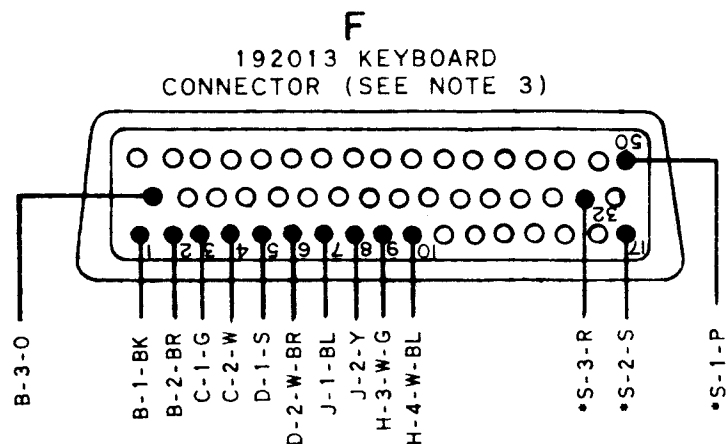
2. COLOR CODE:

- |            |                    |
|------------|--------------------|
| BK - BLACK | W-BK - WHITE-BLACK |
| BR - BROWN | W-BR - WHITE-BROWN |
| R - RED    | W-R - WHITE-RED    |
| O - ORANGE | W-O - WHITE-ORANGE |
| Y - YELLOW | W-Y - WHITE-YELLOW |
| G - GREEN  | W-G - WHITE-GREEN  |
| BL - BLUE  | W-BL - WHITE-BLUE  |
| P - PURPLE | W-P - WHITE-PURPLE |
| W - WHITE  | W-S - WHITE-SLATE  |
| S - SLATE  |                    |

3. CONNECTOR VIEWED FROM BOTTOM.

4. \* ASTERISK DENOTES 18 GA. WIRE

5. THE 195648 STRAP IS NOT PRESENT IN EARLY MANUFACTURED UNIT.



ACTUAL WIRING DIAGRAM FOR MODEL 35 KEYBOARD LAK803

APPROVALS

D AND R E OF M

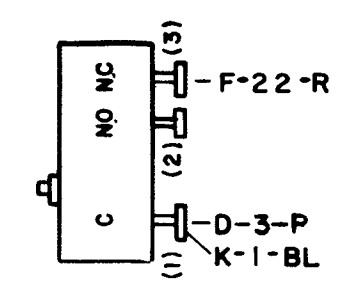
E-NUMBER PROD. NO. 5811WD

DATE: 3-28-62  
P.D. FILE NO. 1-30.151AA  
DRAWN V.E.S. CHKD.  
ENGD. W.M.B. APPD.

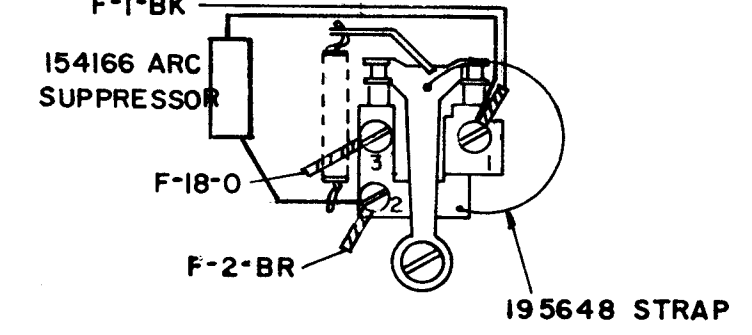
TELETYPE CORPORATION  
5811WD

- NOTES**
- WIRING LEGEND**  
  
 DISTANT TERMINATING AREA  
 DISTANT TERMINAL DESIGNATION  
 WIRE COLOR CODE  
 A-1-BK
  - CONNECTOR VIEWED FROM BOTTOM.
  - \* ASTERISK DENOTES 18 GA. WIRE.
  - ASSOCIATED CABLE  
198217 CABLE ASSEMBLY
  - NUMBERS IN PARENTHESIS ARE NOT MARKED ON COMPONENTS.
  -

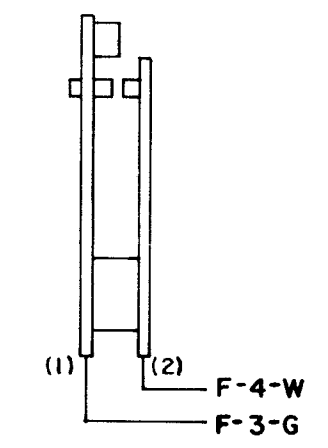
**A**  
MARGIN INDICATOR SWITCH  
155954



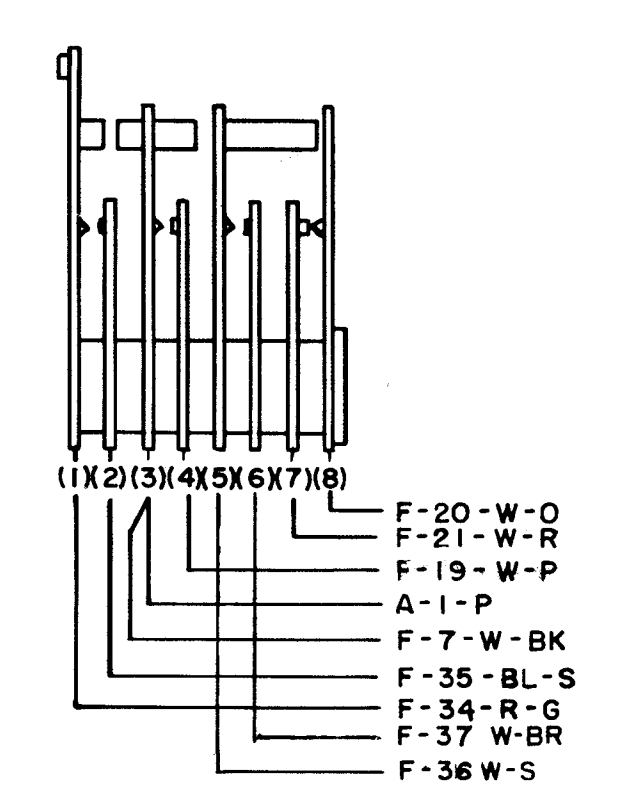
**B**  
CONTACT BOX ASSEMBLY  
197019



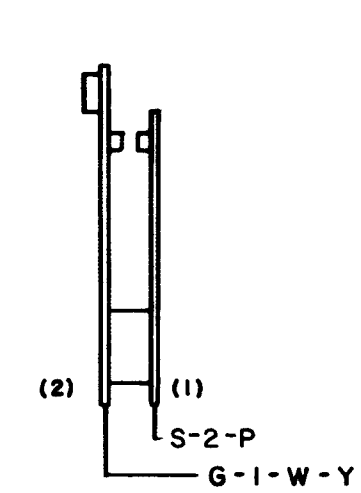
**C**  
TIMING CONTACT



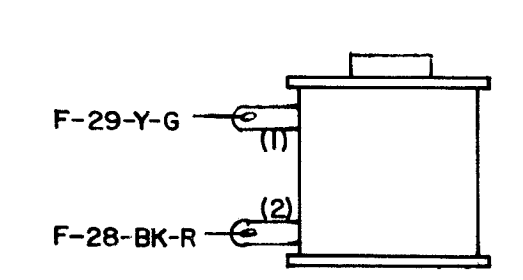
**D**  
RECEIVE BREAK SWITCH



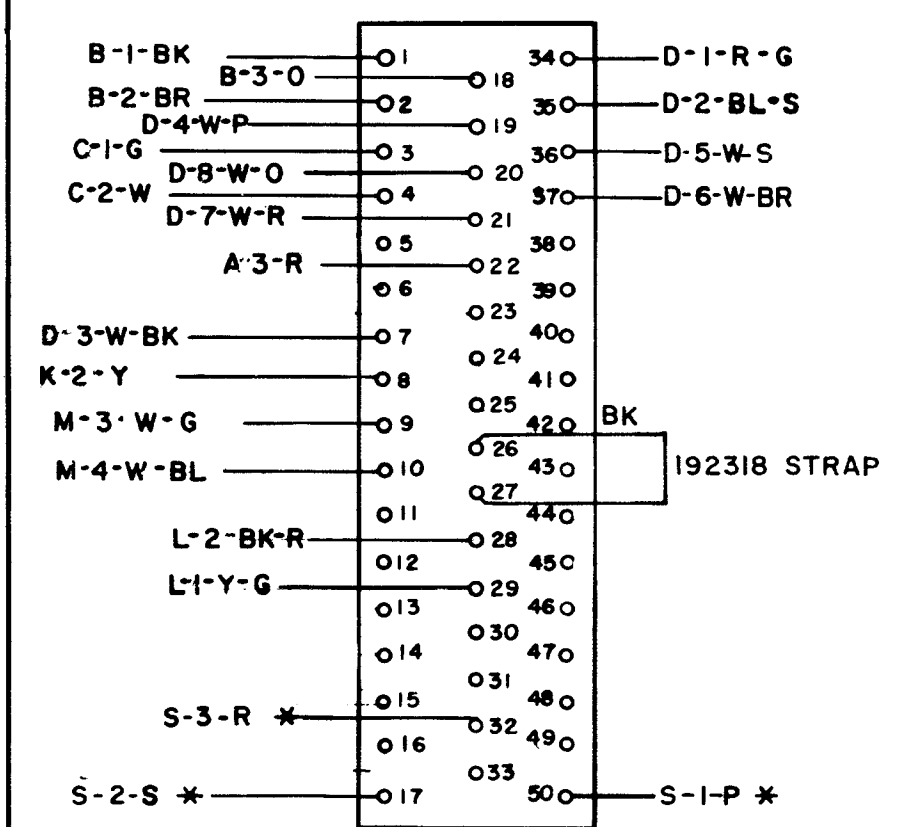
**E**  
BACKSPACE CONTACT



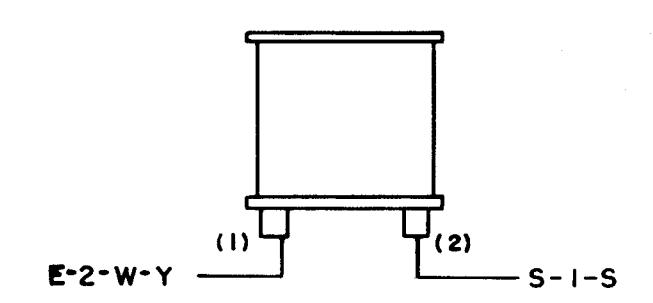
**L**  
CHARACTER COUNTER SUPPRESS COIL



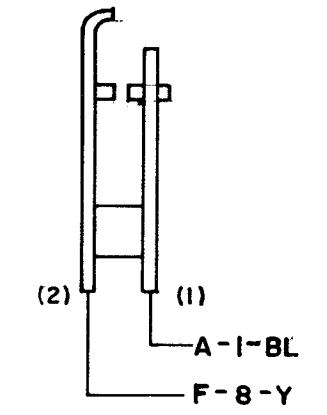
**F**  
KEYBOARD CONNECTOR  
192013



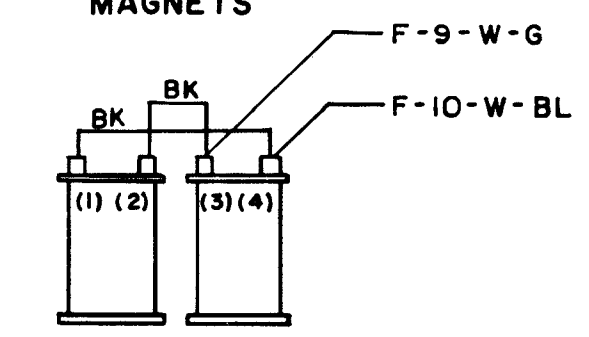
**G**  
BACKSPACE MAGNET  
(ON REPERFORATOR)



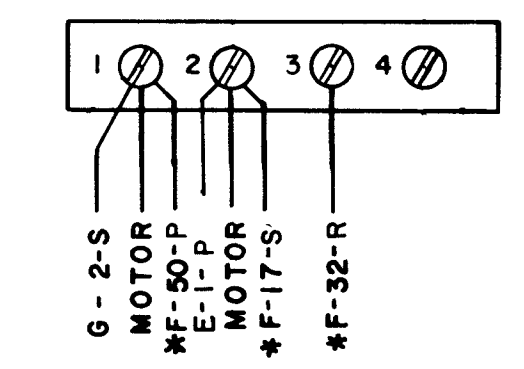
**K**  
END OF LINE INDICATOR SWITCH



**M**  
REPERFORATOR SELECTOR MAGNETS



**S**  
MOTOR TERMINAL BLOCK  
151415



6395 WD		
REVISIONS		
ISS. NO.	DATE	AUTHOR.
1	2-19-64	80153
2	3-23-64	80166
3	4-7-64	80159
4	5-25-64	82577
5	7-2-64	80159-1
6	8-13-64	83199
7	6-24-65	87329

ACTUAL WIRING DIAGRAM FOR MODEL 35 KEYBOARD LAK 806,810

APPROVALS  
 D AND R E OF M  
 E NUMBER  
 PROD. NO. 6395 WD

DATE:  
 P.D. FILE NO. 1-18.151A  
 DRW. CHKD. [Signature]  
 ENGD. WEC. APPD. [Signature]

TELETYPE CORPORATION  
 6395 WD

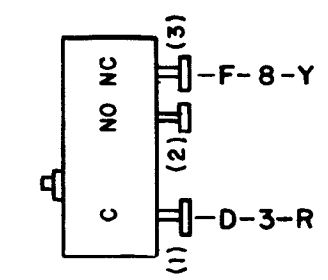
6454WD

REVISIONS		
ISSUE NO.	DATE	AUTHOR. NO.
2	1-28-64	79306
3	2-11-64	80148
4	5-11-64	82147
5	9-15-64	82608
6	6-24-65	87329

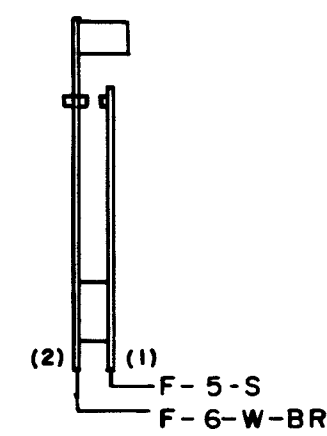
- NOTES**
- WIRING LEGEND**  
    - DISTANT TERMINATING AREA
    - DISTANT TERMINAL DESIGNATION
    - WIRE COLOR CODE
  - COLOR CODE**

BK - BLACK	W-BK - WHITE-BLACK
BR - BROWN	W-BR - WHITE-BROWN
R - RED	W-R - WHITE-RED
O - ORANGE	W-O - WHITE-ORANGE
Y - YELLOW	W-Y - WHITE-YELLOW
G - GREEN	W-G - WHITE-GREEN
BL - BLUE	W-BL - WHITE-BLUE
P - PURPLE	W-P - WHITE-PURPLE
S - SLATE	W-S - WHITE-SLATE
W - WHITE	
  - CONNECTOR VIEWED FROM BOTTOM.**
  - \* ASTERISK DENOTES 18 GA. WIRE.**
  - ASSOCIATED CABLES**
    - 198247 CABLE ASSEMBLY
    - 198252 CABLE ASSEMBLY
  - REFER TO APPROPRIATE REPERFORATOR WIRING DIAGRAM FOR ADDITIONAL CONNECTIONS TO MOTOR TERMINAL BLOCK.**

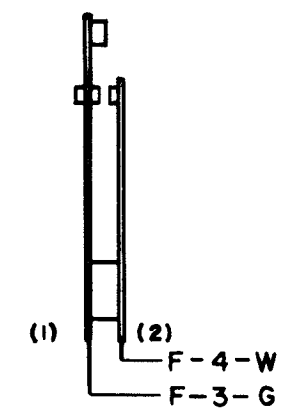
**A**  
MARGIN INDICATOR SWITCH  
155954



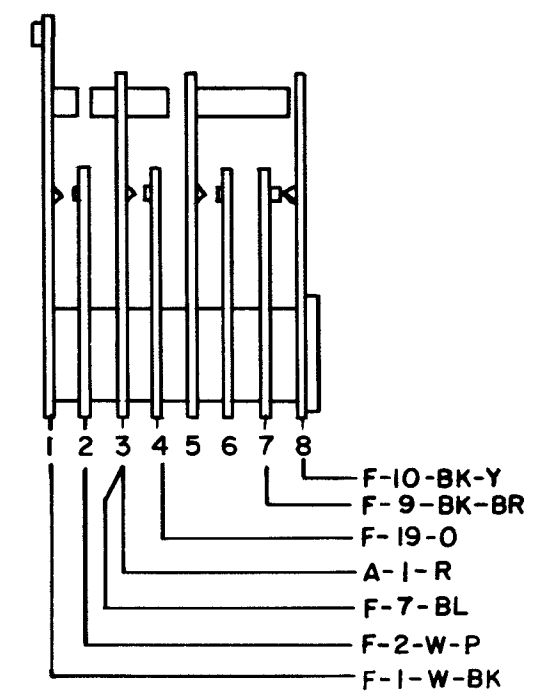
**B**  
KEYBOARD UNIVERSAL CONTACTS  
178144



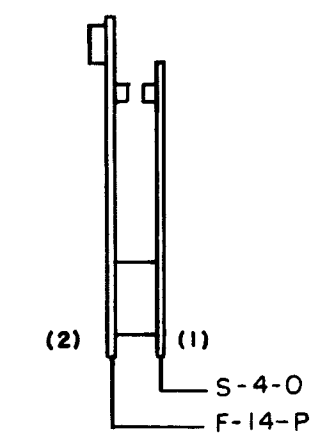
**C**  
TIMING CONTACT



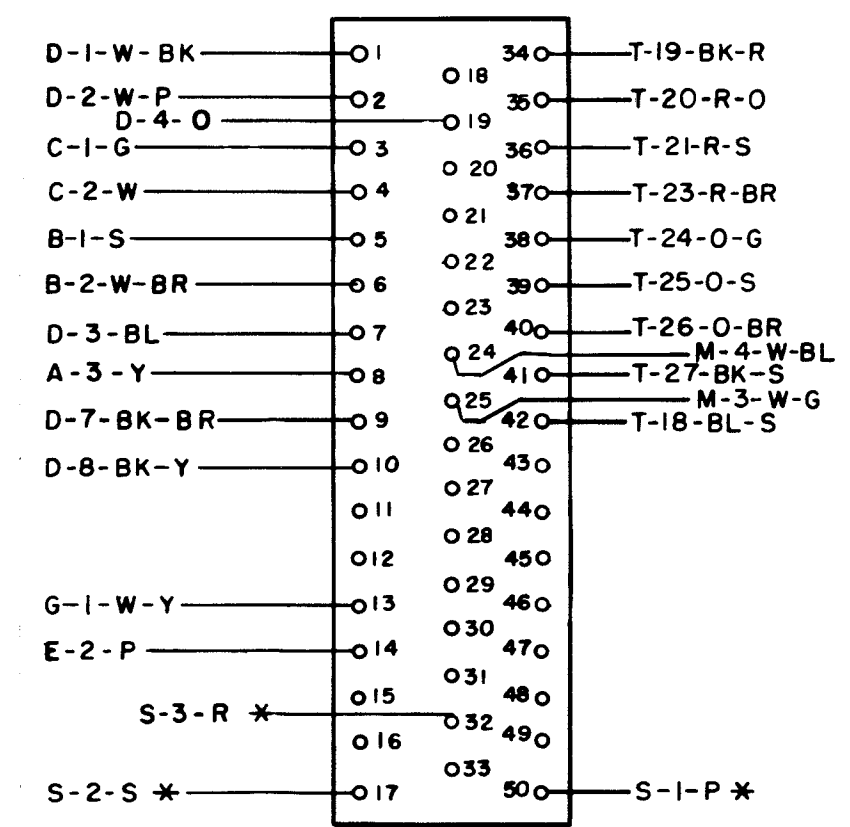
**D**  
RECEIVE BREAK SWITCH



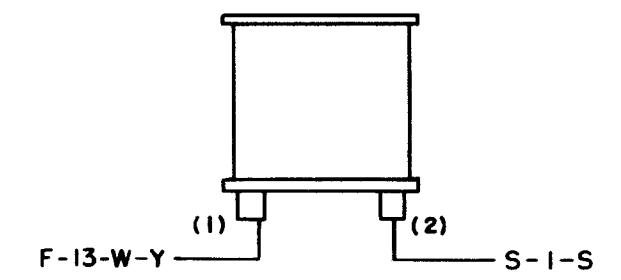
**E**  
BACKSPACE CONTACT



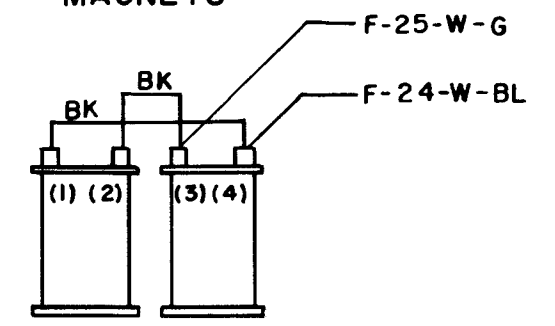
**F**  
KEYBOARD CONNECTOR  
192013



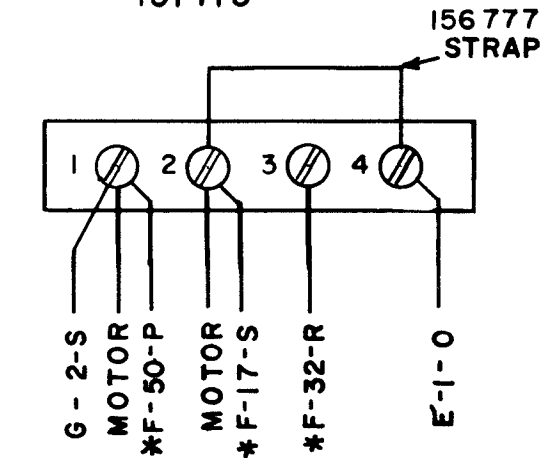
**G**  
BACKSPACE MAGNET  
(ON REPERFORATOR)



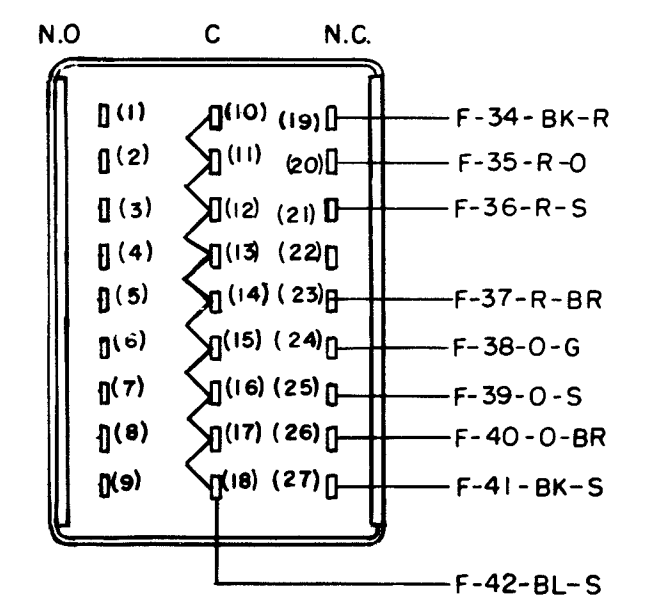
**M**  
REPERFORATOR SELECTOR MAGNETS



**S**  
MOTOR TERMINAL BLOCK  
151415



**T**  
MULTIPLE WIRE OUTPUT CONTACTS



ACTUAL WIRING DIAGRAM FOR MODEL 35 KEYBOARD LAK 805

APPROVALS  
D AND R E OF M

E NUMBER  
PROD. NO. 6454 WD

DATE: 5-23-63

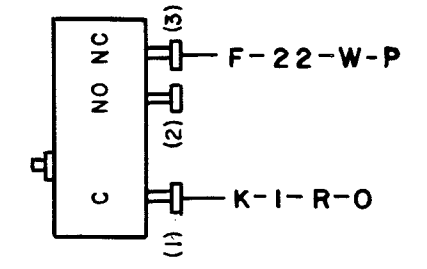
P.D. FILE NO. 18.151AA

DRW. JH CHKD. [initials]  
ENG. WMB APPD. [initials]

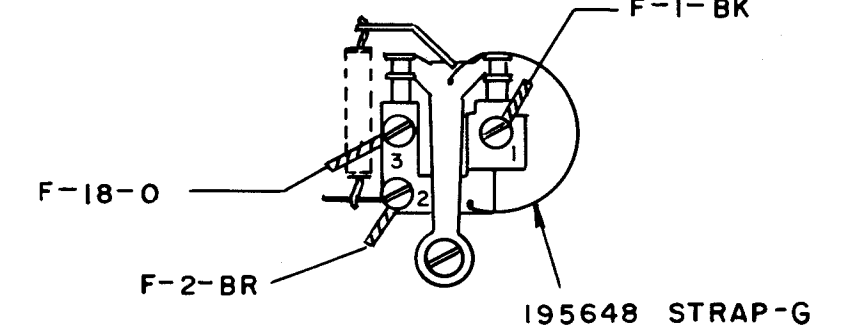
TELETYPE CORPORATION  
6454WD

NO.	NOTES
1.	<b>WIRING LEGEND</b>  DISTANT TERMINATING AREA DISTANT TERMINAL DESIGNATION WIRE COLOR CODE A-1-BK
2.	CONNECTOR VIEWED FROM BOTTOM
3.	* ASTERISK DENOTES 18 GA. WIRE
4.	ASSOCIATED CABLE: 199313 CABLE ASSEMBLY 192502 CABLE ASSEMBLY
5.	NUMBERS IN PARENTHESIS ARE NOT MARKED ON COMPONENTS.

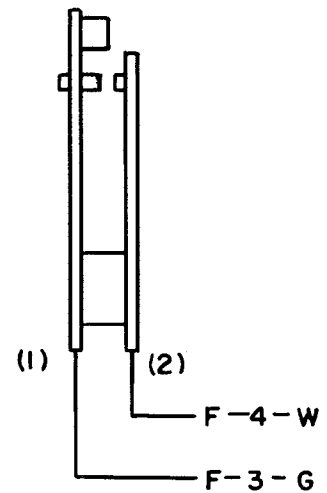
**A**  
MARGIN INDICATOR SWITCH  
158954



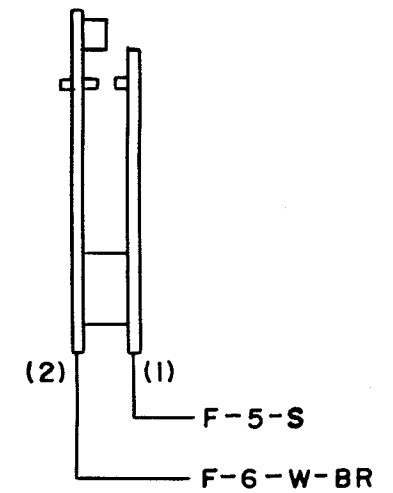
**B**  
CONTACT BOX ASSEMBLY  
176352



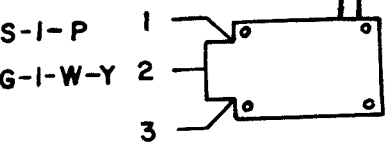
**C**  
TIMING CONTACT



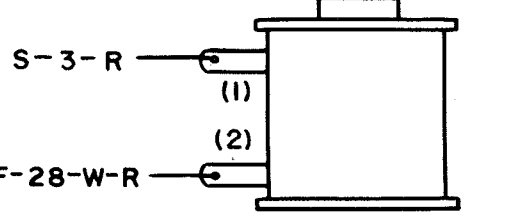
**D**  
KEYBOARD UNIVERSAL CONTACT  
178144



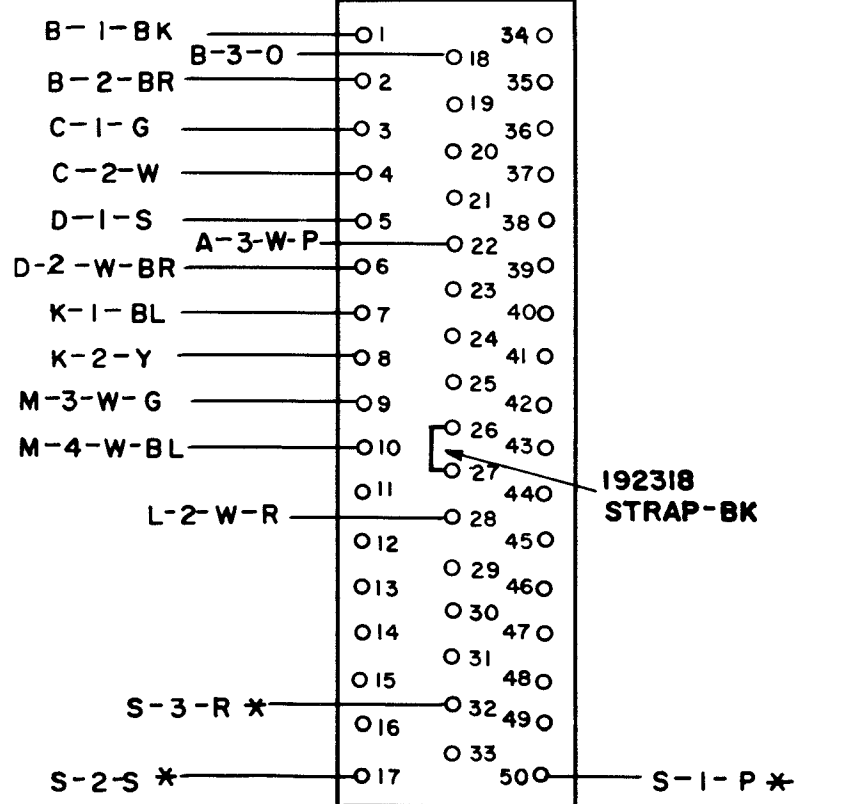
**E**  
BACKSPACE SWITCH  
151329



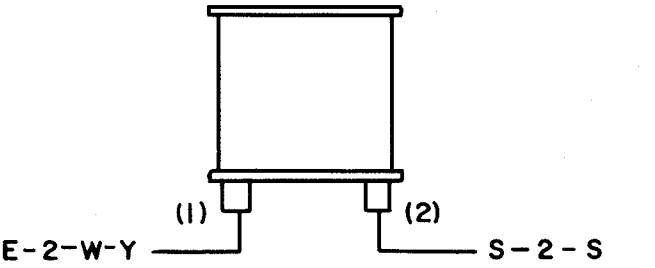
**L**  
CHARACTER COUNTER SUPPRESS COIL



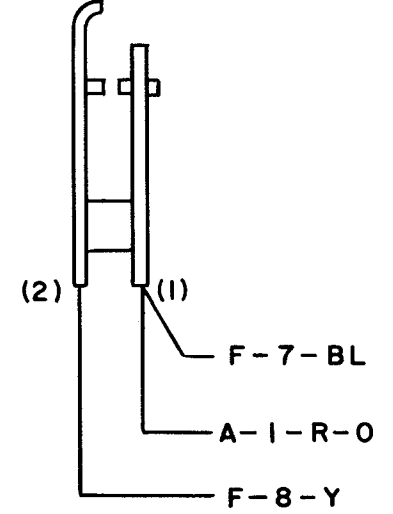
**F**  
KEYBOARD CONNECTOR  
192013



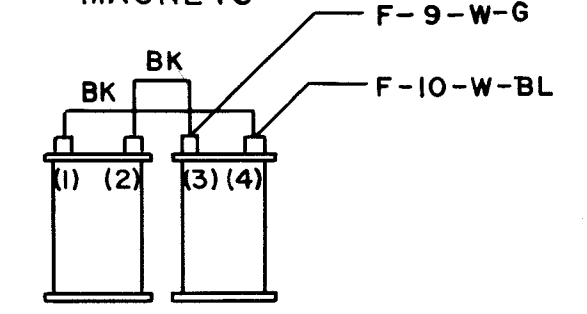
**G**  
BACKSPACE MAGNET  
(ON REPERFORATOR)



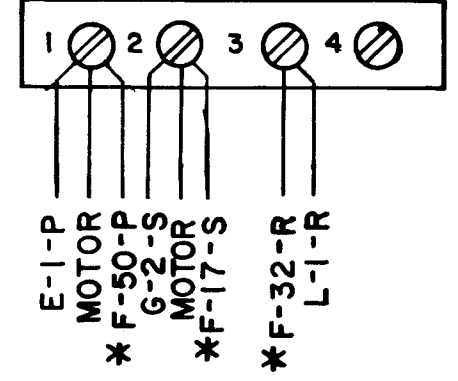
**K**  
END OF LINE INDICATOR SWITCH



**M**  
REPERFORATOR SELECTOR MAGNETS



**S**  
MOTOR TERMINAL BLOCK  
151415



6479 WD		
REVISIONS		
ISSUE NO.	DATE	AUTH. NO.
2	10-8-64	83710
3	10-30-64	83869
4	1-22-65	85864
5	2-15-65	83740
6	6-24-65	87329

ACTUAL WIRING DIAGRAM FOR MODEL 35 KEYBOARD LAK 804 & LAK 811

APPROVALS

D AND R E OF M

E-NUMBER

PROD NO. 6479 WD

DATE 3-7-64

P.D. FILE NO. 1-18.151AA

DRW. L.A. CHKD. *[Signature]*

ENG. W.E.C. APPD. *[Signature]*

TELETYPE CORPORATION

6479 WD

6504WD

REVISIONS		
ISSUE	DATE	AUTH. NO.
2	5-6-64	82029
3	10-7-64	80944

- NO. NOTES
1. WIRING LEGEND:

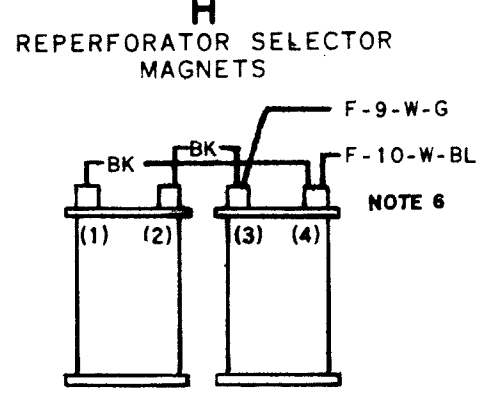
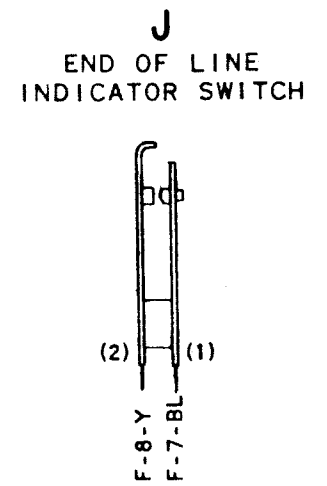
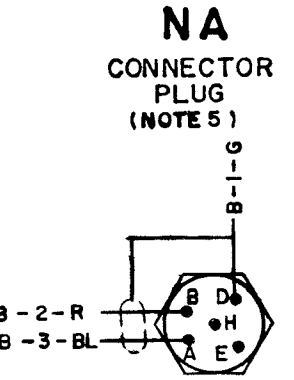
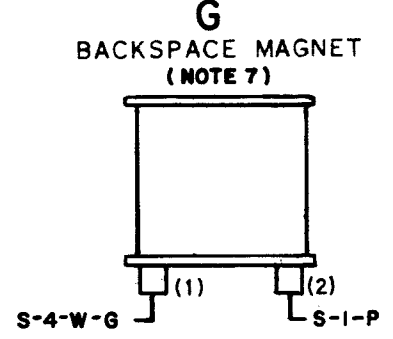
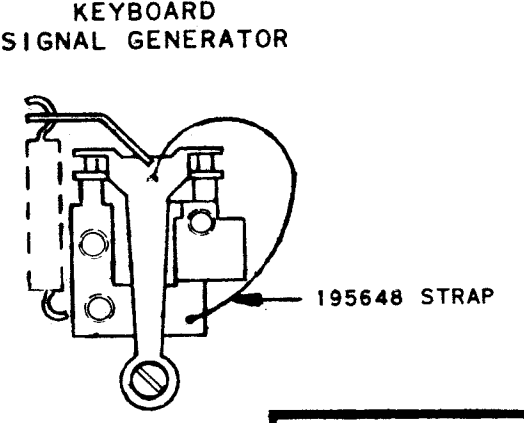
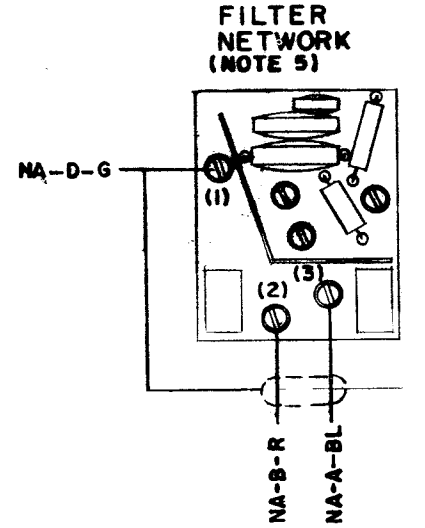
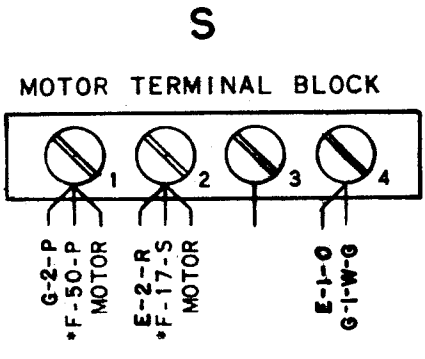
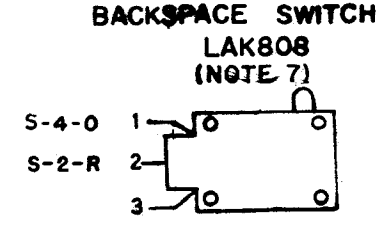
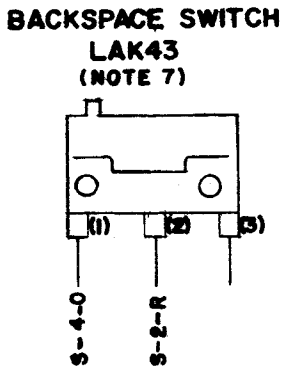
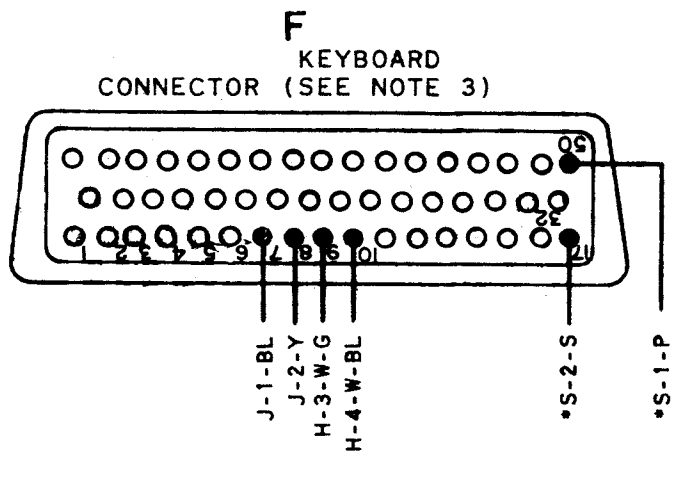
— DISTANT TERMINATING AREA

— DISTANT TERMINAL DESIGNATION

A-1-W-BL

— WIRE COLOR CODE
  2. COLOR CODE:

BK - BLACK	W-BK - WHITE-BLACK
BR - BROWN	W-BR - WHITE-BROWN
R - RED	W-R - WHITE-RED
O - ORANGE	W-O - WHITE-ORANGE
Y - YELLOW	W-Y - WHITE-YELLOW
G - GREEN	W-G - WHITE-GREEN
BL - BLUE	W-BL - WHITE-BLUE
P - PURPLE	W-P - WHITE-PURPLE
W - WHITE	W-S - WHITE-SLATE
S - SLATE	
  3. CONNECTOR VIEWED FROM BOTTOM.
  4. \* ASTERISK DENOTES 18 GA. WIRE
  5. A. SHIELDED CABLE # 179635  
B. MAIN CABLE # 301682
  6. WHEN LPR51 IS USED ON THIS BASE, THE LEADS ALREADY CONNECTED TO THE SELECTOR MAGNETS SHOULD BE REMOVED AND TAPED AND TIED.
  7. BACKSPACE CABLES:  
A. LAK808 - 159343, 301755  
B. LAK43 - 159343, 159992



ACTUAL  
WIRING DIAGRAM  
FOR  
KEYBOARDS  
LAK808, 43

APPROVALS

D AND R	E OF M
<i>[Signature]</i>	
E-NUMBER	
PROD. NO. 6504 WD.	
DATE: 11-5-63	
P.D. FILE NO. 7-AA 219 A	
DRAWN. E.M.	CHKD
ENGD. R.L.F.	APPO. <i>[Signature]</i>

TELETYPE  
CORPORATION  
6504WD