

INSTRUCTIONS FOR INSTALLING MODIFICATION KITS 194750 THROUGH 194765 AND 194896 ON MODEL 28 TYPING UNITS (LP) TO CONVERT AR STUNT BOX TO AN AFG, AN, AGX, AGY, AGZ, AHD, AHA, AES, AED, AHB, AHC, AGN, AGQ, AGP, AHL, AGC, AND AX STUNT BOX, RESPECTIVELY

The chart below pertains to Bell System only.

UNIT	TELETYPE CODE	BELL CODE	UNIT	TELETYPE CODE	BELL CODE
Page Typing Unit	LP86RX/AGX	28B	Page Typing Unit	LP90RX/AHB	28U
	LP87RX/AGY	28L		LP91RX/AHC	28W
	LP19RX/AN	28E		1-LP31WB/AX	28B-1
	LP38RX/AGZ	28F		2-LP28RX/AES	28B-2
	LP89RX/AHA	28G		LP81RA/AGN	28LA
	LP49RX/AED	28H		LP82RA/AGQ	28LB
	LP49RX/AFG	28L		LP80RA/AGP	28LD
	LP92RX/AHD	28S		LP100RA/AHL	29LF
	LP15RX/AR	28D		LP69RX/AGC	No Bell Code

1. GENERAL

a. The 194750 through 194765 Modification Kits and kit 194896 convert the AR Stunt Box on Model 28 Typing Units to AFG, AN, AGX, AGY, AGZ, AHD, AHA, AES, AED, AHB, AHC, AGN, AGQ, AGP, AHL, AGC, and AX Stunt Box respectively. (See charts 1 through 17.)

b. These kits contain all the parts, when used with existing parts, necessary to convert the AR Stunt Box to the stunt box described in each modification kit title. (See charts 1 through 17).

c. The contents of the kits are shown on the check list found with each modification kit.

d. For parts ordering information refer to Teletype Model 28 Parts Bulletin 1149B.

2. INSTALLATION

a. Figure 1 shows typical assembly of shift slide and the parts in the stunt box slot.

b. Charts 1 through 17 contain the information necessary to make the conversion given in their title. Use the Charts as follows:

(1) The parts in the remove column are either to be discarded or if followed by a number in brackets to be relocated in that number slot.

(2) The parts in the add column are either new parts in the kits or if followed by a number in parentheses taken from that number slot.

(3) The appropriate springs and wicks, shown on Figure 1, must be used in the assembly of the stunt box.

(4) If no mention is made for the removal of a part, it is to be left on the stunt box. The only exception to this is the mounting and wiring of the stunt box contacts. The contacts are to be assembled and wired to the stunt box as shown on the wiring diagram included with each kit. If the wiring diagram does not show the 172500 Contact Assembly being used, the 172500 Contact Assembly and cable should be discarded.

(5) To facilitate the stunt box conversion the selector magnet leads and typing unit connector should be disconnected from the typing unit and kept with the stunt box.

(6) When re-installing the cable assemblies to the typing units and stunt boxes, tie the cable to the stunt box handle and reclamp to the printer side frame.

3. ADJUSTMENTS AND LUBRICATION

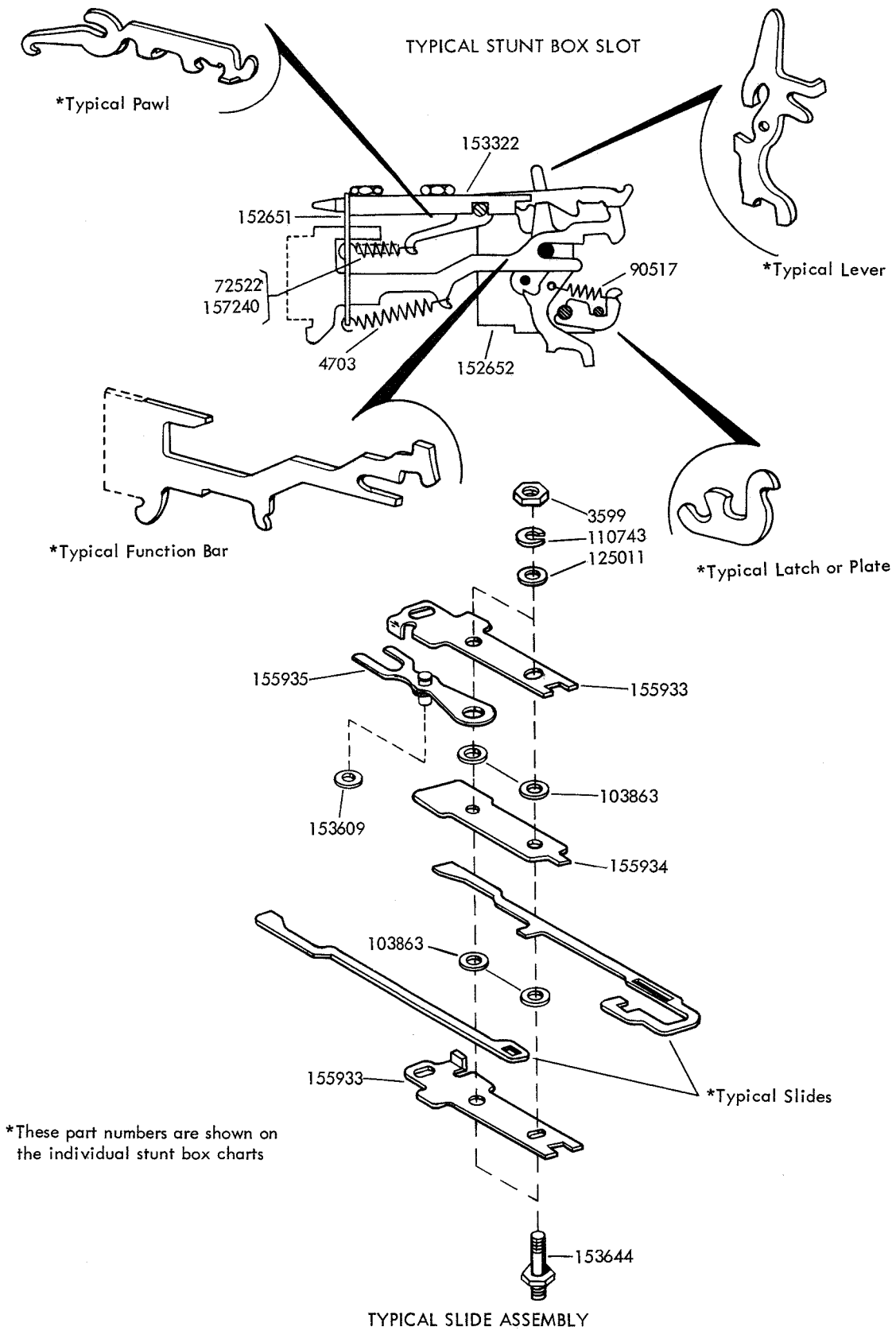
a. For standard adjustments and lubrication procedure of related equipment refer to Teletype Model 28 Bulletin 217B (Bell System refer to standard information).

b. Test the converted stunt boxes for proper function in accordance with their individual requirements.

*

*

*



*These part numbers are shown on the individual stunt box charts

TYPICAL ASSEMBLY OF SHIFT SLIDE AND PARTS IN STUNT BOX SLOTS.

Figure 1.

CONVERSION CHART FOR THE 194750 MODIFICATION KIT
TO CONVERT AR STUNT BOX TO AFG STUNT BOX

[] Indicates slot relocated to.

() Indicates slot taken from.

SLOT	REMOVE			ADD		
	LEVER	LATCH OR PLATE	BAR	LEVER	LATCH OR PLATE	BAR
1						
2						
3						
4				162059(5)	154613(5)	152667CR(5)
5	162059 [4]	154613 [4]	152667CR [4]			
6				152641(22)	152660(22)	152668LF(38)
7				157207	154613	152673UCH(29)
8				157205	152660(29)	152665LTR
9				152641(30)	152660(30)	153437UCS(30)
10				157207	154613	
11				157206	154613	155112SEL M
12				157207	154613	
13				157206	154613	
14				152121(28)	154613	155128SEL CR
15				152298	152089	155315SEL LF
16						
17						
18						
19						
20						
21						
22	152641 [6]	152660 [6]	152669 BL			
23						
24						
25						
26						
27						
28	152121 [14]		152693UC-BL	157207		
29	152641	152660 [8]	152673UCH [7]	152298	152089	
30	152641 [9]	152660 [9]	153437UCS [9]			
31						
32						
33				152121 (35)	154613	152673UCH
34				154647	152660(38)	152665LTR
35	152121 [33]			152659		
36						
37				162484	154613	155313SEL LTR
38	152641 [40]	152660 [34]	152668LF [6]	163944	154613	155218M-V
39				163943	152660	155121SEL V
40	152642			152641(38)		
41						
42						

INSTRUCTIONS:

- See Figure 1 for typical assembly of shift slides and parts in stunt box slots.
- Use 152653 Pawls in all occupied slots. Remove and utilize 152653 Pawls from slots 5, 22, and 30.
- Discard the 152127 Clips above slots 28 and 35. Install the 157274 Function Pawl Clips above slots 10, 12, 13, 28 and 29. These slots are to be equipped in the field with 153440 Function Bars (not part of mod. kit) coded in accordance with customer requirements.
- Discard the 172500 Contact Assembly and the Cable. Install the 172542, 172607, 172532 and 172551 Contact Assemblies above Slots 7, 8, 9, 10, 11, 12; 15, 16, 17, 18; 35, 36, 37, and 38 respectively. Wire the contact assemblies with a 162297 Cable to the stunt box per 3627WD which is included in the kit.
- The 154741 Modification Kit is to be kept with the converted stunt box.
- Assemble & wire the contacts to the stunt box per 3627WD which is included in the kit.
- Install 153318 Rod on Slots 8 & 34 using two 119649 Ring Retainers.
- Install 162299 Stud toward Slot 1 on Slot 38 Function Lever using a 119651 Ring Retainer.
- Replace screw stamped AR with screw stamped AFG.

CONVERSION CHART FOR THE 194751 MODIFICATION KIT
TO CONVERT AR STUNT BOX TO AN STUNT BOX

[] Indicates slot relocated in.

() Indicates slot taken from.

SLOT	REMOVE			ADD		
	LEVER	LATCH OR PLATE	BAR	LEVER	LATCH OR PLATE	BAR
1						
2						
3						
4						
5						
6				152298	152089	155120U
7						
8						
9						
10				152121 (28)	154613(28)	152666FIG
11				154647	152660(29)	152673UCH
12						
13				152121	154613	152667CR
14				152298	152089	152668LF
15				152641 (22)	152660(22)	152669(22)BL
16				152641 (38)	152660(38)	152668(38)LF
17						
18						
19						
20						
21						
22	152641 [15]	152660 [15]	152669BL [15]			
23						
24						
25				152641 (30)	152660 (30)	153437PUCS(30)
26				154646	154613	152665 LTR
27				152642	152660	155129SP
28	152121 [10]	154613 [10]	152693 UC-BL	152298	152089	155126 UNIV
29	152641	152660 [11]	152673 UCH [31]			
30	152641 [25]	152660 [25]	153437PUCS [25]	152121	154613	152666FIG
31				154647	152660	152673UCH(29)
32						
33						
34						
35						
36						
37				152642	152660	155130LF
38	152641 [16]	152660 [16]	152668 LF [16]			
39						
40						
41						
42						

INSTRUCTIONS:

- See Figure 1 for typical assembly of shift slides and parts in stunt box slots.
- Use 152653 Pawls, in all occupier slots. Remove and utilize 152632 Pawls from slots 22,29, and 38.
- Slot 6,7,8,9-Add shift Slide Assembly using 155941 slide. Slot 14-Add shift slide assembly using 155938 Slide.
- The 153920 Modification Kit is to be kept with the converted stunt box.
- Discard the 172500 Contact Assembly and cable and 152127 Clips over slots 28 and 35. Install the 172503 Switch Assembly above slots 25,26,27, and 28. Wire contact assembly to the stunt box per 3215WD which is included in the kit.
- Install the 154669 Rod on slots 11 & 31 Function Levers using two 119649 Ring Retainers.
- Replace screw stamper AR with screw stamped AN.

CONVERSION CHART FOR THE 194752 MODIFICATION KIT
TO CONVERT AR STUNT BOX TO AGX STUNT BOX

[] Indicates slot relocated to.

() indicates slot taken from.

SLOT	REMOVE			ADD		
	LEVER	LATCH OR PLATE	BAR	LEVER	LATCH OR PLATE	BAR
1						
2						
3						
4						
5						
6						
7						
8						
9						
10						
11						
12						
13						
14						
15						
16						
17						
18						
19						
20						
21						
22						
23						
24						
25						
26						
27						
28						
29						
30						
31						
32						
33						
34						
35						
36						
37						
38						
39						
40						
41				152641*	152660*	155131 PUCJ*
42				152641**	152660**	155134 PUCZ**

INSTRUCTIONS:

1. See Figure 1 for typical assembly of parts in stunt box slots.
2. Install the 176642 Clips over slots 41 and 42 to block form feed-out if desired.
3. Replace screw stamped AR with screw stamped AGX.

* Part of 176569 Modification Kit.
** Part of 157530 Modification Kit.

CONVERSION CHART FOR THE 194753 MODIFICATION KIT
TO CONVERT AR STUNT BOX TO AGY STUNT BOX

[] Indicates slot relocated in.

() indicates slot taken from.

SLOTS	REMOVE			ADD		
	LEVER	LATCH OR PLATE	BAR	LEVER	LATCH OR PLATE	BAR
1						
2						
3						
4						
5						
6						
7						
8						
9						
10						
11						
12						
13						
14						
15						
16						
17				152642	152660	155135 PUCG
18						
19						
20						
21						
22						
23						
24						
25						
26						
27						
28						
29						
30						
31						
32						
33						
34						
35						
36						
37						
38						
39						
40						
41				152641 *	152660 *	155131 PUCJ *
42				152641 **	152660 **	155134 PUCZ **

INSTRUCTIONS:

1. See Figure 1 for typical assembly of shift slides and parts in stunt box slots.
2. Use 152653 Pawls in all occupied slots.
3. *Part of 176569 Modification Kit.
**Part of 157530 Modification Kit.
4. Install the 176642 Clips over slots 41 and 42 block form feed-out if desired.
5. Replace screw stamped AR with screw stamped AGY.

CONVERSION CHART FOR THE 194754 MODIFICATION KIT
TO CONVERT AR STUNT BOX TO AGZ STUNT BOX

[] Indicates slot relocated in.

() Indicates slot taken from.

SLOT	REMOVE			ADD		
	LEVER	LATCH OR PLATE	BAR	LEVER	LATCH OR PLATE	BAR
1						
2						
3						
4						
5						
6				152298	152089	155120U
7						
8						
9						
10				152121 (28)	154613 (28)	152666 FIG
11				154647	152660 (29)	152673 UCH
12						
13				152121	154613	152667 CR
14				152298	152089	152668 LF
15				152641 (22)	152660 (22)	152669 BL (22)
16				152641 (38)	152660 (38)	152668 LF (38)
17						
18						
19						
20						
21						
22	152641 [15]	152660 [15]	152669 BL [15]			
23						
24						
25				152641 (30)	152660 (30)	153437PUCS(30)
26				154646	154613	152665 LTR
27				152642	152660	155129 SP
28	152121 [10]	154613 [10]	152693 UC-BL	152298	152089	155126 UNIV
29	152641	152660 [11]	152673UCH [31]			
30	152641 [25]	152660 [25]	153437PUCS [25]	152121	154613	152666 FIG
31				154647	152660	152673 UCH(29)
32						
33						
34						
35						
36						
37				152642	152660	155130 LF
38	152641 [16]	152660 [16]	152668 LF [16]			
39						
40						
41				152641*	152660*	155131 PUCJ*
42				152641**	152660**	155134 PUCZ**

INSTRUCTIONS:

- See Figure 1 for typical assembly of shift slides and parts in stunt box slots.
- Use 152653 Pawls in all occupied slots. Remove and utilize 152653 Pawls from Slots 22, 29 and 38.
- Slot 6, 7, 8, 9-Add shift slide assembly using 155941 Slide.
- The 153920 Modification Kit is to be kept with the converted stunt box.
- Discard the 152127 Clips over Slots 28 and 35, the 172500 Contact Assembly and the cable. Install the 172503 Contact Assembly above Slots 25, 26, 27 and 28. Wire the contact assembly with a 157104 Cable to the stunt box per 4355WD which is included in the kit.
- Install the 154669 Rods on slots 11 and 31 using two 119649 Ring Retainers.
- *Part of 176569 Modification Kit.
**Part of 157530 Modification Kit.
- Install the 176642 Clips over Slots 41 and 42 to block form feed-out if desired.
- Replace screw stamped AR with screw stamped AGZ.

CONVERSION CHART FOR THE 194755 MODIFICATION KIT
TO CONVERT AR STUNT BOX TO AHD STUNT BOX

[] Indicates slot relocated in.

() Indicates slot taken from.

SLOT	REMOVE			ADD		
	LEVER	LATCH OR PLATE	BAR	LEVER	LATCH OR PLATE	BAR
1						
2						
3						
4				162059 (5)	154613 (5)	152667CR (5)
5	162059 [4]	154613 [4]	152667CR [4]			
6				152641 (22)	152660 (22)	152668LF (38)
7				157207	154613	152673UCH (29)
8				157205	152660 (29)	152665LTR
9				152641 (30)	152660 (30)	152672UCS
10				157207	154613	
11				157206	154613	155112 SEL M
12				157207	154613	
13				157206	154613	
14				152121 (28)	154613	155128 SEL CR
15				152298	152089	155315 SEL LF
16						
17						
18						
19						
20						
21						
22	152641 [6]	152660 [6]	152669 BL			
23						
24						
25						
26						
27						
28	152121 [14]		152693UC BL	157207		
29	152641	152660 [8]	152673UCH [7]	152298	152089	
30	152641 [9]	152660 [9]	153437 UCS			
31						
32						
33				152121 (35)	154613	152673UCH
34				154647	152660 (38)	152665LTR
35	152121 [33]			152659		
36						
37				162484	154613	155313 SEL-LTR
38	152641 [40]	152660 [34]	152668LF [6]	163944	154613	155218M-V
39				163943	152660	155121SEL-V
40	152642			152641 (38)		
41				152641*	152660*	155131PUCJ*
42				152641	152660	155134PUCZ

INSTRUCTIONS:

- See Figure 1 for typical assembly of shift slides and parts in stunt box slots.
- Use 152653 Pawls in all occupied slots. Remove and utilize 152653 Pawls from Slots 5, 22, and 30.
- Slot 15-Add shift slide assembly using 155946 Slide. Slots 27, 28, 29, 30, & 31-Add shift slide assembly using 162298 Slides.
- Discard the 152127 Clips over Slots 28 and 35. Install the 157274 Function Pawl Clips over Slots 10, 12, 13, 28 and 29. These slots are to be equipped in the field with 153440 Function Bars (not part of mod. kit) coded in accordance with customer requirements.
- The 154741 Modification Kit is to be kept with the converted stunt box.
- Discard the 172500 Contact Assembly and the Cable. Install the 172542, 172607, 172532 and 172551 Contact Assemblies above Slots 7, 8, 9, 10; 11, 12; 15, 16, 17, 18; and 35, 36, 37 and 38 respectively. Wire the contact assemblies with a 162297 Cable to the stunt box per 4254WD which is included in the kit.
- Install the 153318 Rod on slots 8 & 34 Function Levers using two 119649 Ring Retainers.
- Install 162299 Stud toward slot 1 on slot 38 Function Lever using a 119651 Ring Retainer.
- *Part of 176569 Modification Kit.
- Install the 176642 Clips over Slots 41 and 42 to block form feed-out if desired.
- Replace screw stamped AR with screw stamped AHD.

CONVERSION CHART FOR THE 194756 MODIFICATION KIT
TO CONVERT AR STUNT BOX TO AHA STUNT BOX

[] Indicates slot relocated in.

() Indicates slot taken from.

SLOT	REMOVE			ADD		
	LEVER	LATCH OR PLATE	BAR	LEVER	LATCH OR PLATE	BAR
1						
2						
3						
4						
5						
6				152298	152089	155120 U
7						
8						
9						
10				152121(28)	154613(28)	152666FIG
11				154647	152660(29)	152673UCH
12						
13				152121	154613	152667CR
14				152298	152089	152668LF
15				152641(22)	152660(22)	152669BL(22)
16				152641(38)	152660(38)	152668LF(38)
17				152642	152660	155135PUCG
18						
19						
20						
21						
22	152641 [15]	152660 [15]	152669BL [15]			
23						
24						
25				152641(30)	152660(30)	153437PUCS(30)
26				154646	154613	152665LTR
27				152642	152660	155129SP
28	152121 [10]	154613 [10]	152693UC-BL	152298	152089	155126UNIV
29	152641	152660 [11]	152673UCH [31]			
30	152641 [25]	152660 [25]	153437PUCS [25]	152121	154613	152666FIG
31				154647	152660	152673UCH(29)
32						
33						
34						
35						
36						
37				152642	152660	155130LF
38	152641 [16]	152660 [16]	152668LF [16]			
39						
40						
41				152641*	152660*	155131PUCJ*
42				152641**	152660**	155134PUCZ**

INSTRUCTIONS:

- See Figure 1 for typical assembly of shift slides and parts in stunt box slots.
- Use 152653 Pawls in all occupied slots. Re-move and utilize 152653 Pawls from slots 22, 29, and 38.
- Slot 6,7,8,9-Add shift slide assembly using 155941 slide. Slot 14-Add shift slide assembly using 155938 slide.
- The 153920 Modification Kit is to be kept with the converted stunt box.
- Discard the 172500 Contact Assembly and the cable. Install the 172503 Contact Assembly above Slots 25,26,27 and 28. Wire the contact assembly with a 157104 Cable to the stunt box per 4355WD which is included in the kit.
- Install the 154669 Rod on slots 11 & 31 function levers using two 119649 Ring Retainers.
- *Part of 176569 Modification Kit.
**Part of 157530 Modification Kit.
- Install the 176642 Clips over Slots 41 and 42 to block form feed-out if desired.
- Discard the 152127 Clips above Slots 28 and 35.
- Replace screw stamped AR with screw stamped AHA.

CONVERSION CHART FOR THE 194757 MODIFICATION KIT
TO CONVERT AR STUNT BOX TO AES STUNT BOX

[] Indicates slots relocated in.

() Indicates slot taken from.

SLOT	REMOVE			ADD		
	LEVER	LATCH OR PLATE	BAR	LEVER	LATCH OR PLATE	BAR
1						
2						
3						
4						
5						
6						
7						
8						
9						
10						
11						
12						
13						
14						
15						
16						
17						
18						
19						
20						
21						
22						
23						
24						
25						
26						
27						
28						
29						
30	152641			152642		
31						
32						
33						
34						
35						
36						
37						
38						
39						
40						
41						
42						

INSTRUCTIONS:

1. See Figure 1 for typical assembly of parts in stunt box slots.
2. Replace screw stamped AR with screw stamped AES.

CONVERSION CHART FOR THE 194758 MODIFICATION KIT
TO CONVERT AR STUNT BOX TO AED STUNT BOX

[] Indicates slot relocated in.

() Indicates slot taken from.

SLOT	REMOVE			ADD		
	LEVER	LATCH OR PLATE	BAR	LEVER	LATCH OR PLATE	BAR
1						
2						
3						
4						
5						
6				152121 (28)	154613(28)	
7				152298	152089	
8				152121	154613	
9				152298	152089	
10				152121	154613	152673UCH(29)
11				154647	152660(29)	152665LTR
12				152121	154613	155121SEL V
13				152121	154613	152667CR
14				152298	152089	152668LF
15				152641 (22)	152660(22)	152669BL (22)
16				152641 (38)	152660(38)	152668LF(38)
17						
18				157207	154613	
19				157206	154613	
20				157207	154613	
21				157206	154613	
22	152641 [15]	152660 [15]	152669BL [15]			
23						
24				157207	154613	
25				157206	154613	
26				152641 (30)	152660(30)	153437UCS(30)
27				157207	154613	152673 UCH
28	152121 [6]	154613 [6]	152693 UC-BL	157205	152660	152665 LTR
29	152641	152660 [11]	152673UCH [10]			
30	152641 [26]	152660 [26]	153437UCS [26]			
31						
32				152298	152089	
33				153670	152660	155121 SEL V
34				152298	152089	
35						
36						
37				152642	152660	155130LF
38	152641 [16]	152660 [16]	152668LF [16]	152642	152660	155311SELUNIV
39						
40						
41						
42						

INSTRUCTIONS:

- See Figure 1 for typical assembly of shift slides and parts in stunt box slots.
- Use 152653 Pawls in all occupied slots. Remove and utilize 152653 Pawls from Slots 22, 29 and 30.
- Slots 7, 8, 9-Add shift slide assembly using 155948 Slide. Slot 15-Add shift slide assembly using 155938 Slide.
- Discard the 152127 Clips over Slots 28 and 35. Install the 157274 Function Pawl Clips over Slots 28 and 35. Install the 157274 Function Pawl Clips over Slots 6, 7, 8, 9, 18, 19, 20, 21, 24, 25, 32 and 34. These slots are to be equipped in the field with 153440 Function Bars (NOT PART OF MOD. KIT) coded in accordance with customer requirements.
- The 154741 Modification Kit is to be kept with the converted stunt box.
- Discard the 172500 Contact Assembly and the Cable. Install the 172562, 172510, 172523, 172521, 172522 and 172506 Contact Assemblies above Slots 17, 18, 19, 20; 21, 22, 23, 24; 25, 26, 27, 28; 29, 30, 31, 32; 33, 34, 35, 36; 37, 38, 39, and 40 respectively. Wire the contact assemblies with a 157269 Cable to the stunt box per 3318WD which is included in the kit.
- Install 155073 Rod on slots 11 & 28 function levers. Using two 119649 Ring Retainers.
- Install 157203 Stud toward slot 42 on slot 33 function lever. Using one 119649 Ring Retainers.
- Replace screw stamped AR with screw

CONVERSION CHART FOR 194759 MODIFICATION KIT
TO CONVERT AR STUNT BOX TO AHB STUNT BOX

[] Indicates slot relocated in.

() Indicates slot taken from.

SLOT	REMOVE			ADD		
	LEVER	LATCH OR PLATE	BAR	LEVER	LATCH OR PLATE	BAR
1						
2	152641			152642		
3						
4						
5						
6						
7						
8						
9						
10						
11						
12						
13						
14						
15						
16						
17						
18						
19						
20						
21						
22						
23						
24						
25						
26						
27						
28						
29						
30						
31						
32						
33						
34						
35						
36						
37						
38						
39						
40						
41				152641*	152660*	155131PUCJ*
42				152641**	152660**	155134PUCZ**

INSTRUCTIONS:

1. See Figure 1 for typical assembly of parts in stunt box slots.
2. ** Part of 157530 Modification Kit.
** Part of 176569 Modification Kit.
3. Install the 176642 Clips over slots 41 and 42 to block form feed-out if desired.
4. Replace screw stamped AR with screw stamped AHB.

CONVERSION CHART FOR THE 194760 MODIFICATION KIT
TO CONVERT AR STUNT BOX TO AHC STUNT BOX

[] Indicates slot relocated to.

() Indicates slot taken from.

SLOT	REMOVE			ADD		
	LEVER	LATCH OR PLATE	BAR	LEVER	LATCH OR PLATE	BAR
1						
2	152641			152642		
3						
4						
5						
6				152298	152089	155120U
7						
8						
9						
10				152121 (28)	154613(28)	152666FIG
11				154647	152660(29)	152673UCH
12						
13				152121	154613	152667 CR
14				152298	152089	152668LF
15				152641 (22)	152660 (22)	152669BL(22)
16				152641 (38)	152660(38)	152668 LF(38)
17						
18						
19						
20						
21						
22	152641 [15]	152660 [15]	152669BL [15]			
23						
24						
25				152641 (30)	152660 (30)	153437PUCS(30)
26				154646	154613	152665 LTR
27				152642	152660	155129 SP
28	152121 [10]	154613 [10]	152693 UC-BL	152298	152089	155126 UNIV
29	152641	152660 [11]	152673 UCH[31]			
30	152641 [25]	152660 [25]	153437 PUCS [25]	152121	154613	152666 FIG
31				154647	152660	152673 UCH (29)
32						
33						
34						
35						
36						
37				152642	152660	155130LF
38	152641 [16]	152660 [16]	152668 LF [16]			
39						
40						
41				152641*	152660*	155131 PUCJ*
42				152641**	152660**	155134 PUCZ**

INSTRUCTIONS:

- See Figure 1 for typical assembly of shift slides and parts in stunt box slots.
- Use 152653 Pawls in all occupied slots. Remove and utilize the 152653 Pawls from Slots 22,29 and 38.
- Slots 6,7,8,9-Add Shift Slide Assembly using 155941 Slide. Slot 14-Add shift slide assembly using 155938 Slide.
- The 164331 Modification Kit is to be kept with the converted stunt box.
- Discard the 172500 Contact Assembly and the Cable. Install the 172503 Contact Assembly above Slots 25,26,27 and 28. Wire the contact assembly with a 157104 Cable to the stunt box per 4355WD which is included in the kit.
- Install the 154669 Rod on slots 11 & 31 function levers, Using two 119649 Ring Retainers.
- *Part of 176569 Modification Kit.
**Part of 157530 Modification Kit.
- Replace screw stamped AR with screw stamped AHC.
- Install the 176642 Clips over Slots 41 and 42 to block form feed-out if desired.
- Discard the 152127 Clips over Slots 28 and 35.

CONVERSION CHART FOR THE 194761 MODIFICATION KIT
TO CONVERT AR STUNT BOX TO AGN STUNT BOX

[] Indicates slot relocated in.

() Indicates slot taken from.

SLOTS	REMOVE			ADD		
	LEVER	LATCH OR PLATE	BAR	LEVER	LATCH OR PLATE	BAR
1			155129 SP			
2						
3						
4						
5						
6						
7						
8						
9						
10						
11						
12						
13						
14						
15						
16						
17						
18						
19						
20						
21						
22	152641	152660	152669 BL			
23						
24						
25						
26						
27						
28			152693 UC-BL			152667 CR
29	152641		152673 UCH	152642 (36)		152668 LF
30			153437 PUCS			152672 UCS
31						
32						
33						
34						
35	152121	154613	152669 BL			
36	152642 [29]	152660	152669 BL			
37						
38						
39						
40						
41						
42						

INSTRUCTIONS:

1. See Figure 1 for typical assembly of shift slides and parts in stunt box slots.
2. Use 152653 Pawls in all occupied slots. Remove and discard 152653 Pawls not being used.
3. Wire existing contact assembly per 4227WD which is included with this kit.
4. Discard the 152127 Clips from Slots 28 and 35.
5. Replace screw stamped AR with screw AGN.

CONVERSION CHART FOR THE 194762 MODIFICATION KIT
TO CONVERT AR STUNT BOX TO AGQ STUNT BOX

[] Indicates slot relocated in.

() Indicates slot taken from.

SLOT	REMOVE			ADD		
	LEVER	LATCH OR PLATE	BAR	LEVER	LATCH OR PLATE	BAR
1						
2						
3						
4						
5						
6						
7						
8						
9						
10						
11						
12						
13						
14						
15						
16						
17						
18				152121	154613	152689 N
19				152121	154613	152689 N
20				152121	154613	152689 N
21				152642	152660	152689 N
22						
23						
24				152641 (30)	152660(29)	152672UCS
25						
26				152121 (28)	154613(28)	153440 UNIV
27				157207	154613	153440 UNIV
28	152121 [26]	154613 [26]	152693UC-BL	157206	152660(36)	155129 SP(1)
29	152641	152660 [24]	152673 UCH	152121 (35)	154613(35)	152667 CR
30	152641 [24]		153437PUCS	152642(36)		152668 LF
31						
32						
33						
34						
35	152121 [29]	154613 [29]	152669BL			
36	152642 [30]	152660 [28]	152669BL			
37						
38						
39						
40						
41						
42						

INSTRUCTIONS:

1. See Figure 1 for typical assembly of shift slides and parts in stunt box slots.
2. Use 152653 Pawls in all occupied slots. Remove and utilize 152653 Pawls from Slots 35 and 36.
3. Discard the 152127 Clips over Slots 28 and 35, the 172500 Contact Assembly and the cable. Install the 172519 and 172522 Contact Assemblies above Slots 21,22,23,24,27,28,29 and 30. Wire the contact assemblies with a 145302 Cable to the stunt box per 4228WD which is included in the kit.
4. Replace screw stamped AR with screw stamped AGQ.

CONVERSION CHART FOR THE 194763 MODIFICATION KIT
TO CONVERY AR STUNT BOX TO AGP STUNT BOX

[] Indicates slot relocated to.

() indicates slot taken from.

SLOT	REMOVE			ADD		
	LEVER	LATCH OR PLATE	BAR	LEVER	LATCH OR PLATE	BAR
1			155129SP [28]			
2						
3						
4						
5						
6						
7						
8						
9						
10						
11						
12						
13						
14						
15				152121 (28)	154613(28)	155294 N
16				152121	154613	155294 N
17				152121	152089	155294 N
18				153670	152660 (30)	155159 P UNIV
19						
20						
21				152642	152660	155204 P-N
22						
23						
24				152641(29)	152660 (29)	152672UCS
25						
26				152121(35)	154613(35)	153440 UNIV
27				157207	154613	153440 UNIV
28	152121 [15]	154613 [15]	152693UC-BL	157206	152660	155129 SP (1)
29	152641 [24]	152660 [24]	152673UCH			
30	152641	152660 [18]	153437 PUCS			
31						
32						
33						
34						
35	152121 [26]	154613 [26]	152669 BL			
36	152642 [39]	152660 [39]	152669BL			
37				152641(38)	152660 (38)	152668LF (38)
38	152641 [37]	152660 [37]	152668LF [37]	152121	154613	152667CR
39				152642(36)	152660(36)	152668 LF
40	152642 [42]	152660 [42]	153435 P-LF			
41						
42				152642(40)	152660(40)	155159 P UNIV

INSTRUCTIONS:

- See Figure 1 for typical assembly of shift slides and parts in stunt box slots.
- Use 152653 Pawls in all occupied slots. Remove and utilize the 152653 Pawls from Slots 1, 29, 30, 35, 36 and 40.
- Slot 17-Add shift slide assembly using 155938 Slide.
- Discard the 152127 Clips over Slots 28 and 35, the 172500 Contact Assembly and the Cable. Install the 172519 and 172508 Contact Assemblies above Slots 21, 22, 23, 24, 27, 28, 29, and 30. Wire the contact assemblies with a 145302 Cable to the stunt box per 4228WD which is included in the kit.
- Replace screw stamped AR with screw stamped AGP.

CONVERSION CHART FOR THE 194764 MODIFICATION KIT
TO CONVERT AR STUNT BOX TO AHL STUNT BOX

[] Indicates slot relocated in.

() Indicates slot taken from.

SLOT	REMOVE			ADD		
	LEVER	LATCH OR PLATE	BAR	LEVER	LATCH OR PLATE	BAR
1			155129SP [28]			
2						
3						
4				152641 (30)	152660	152671 ACR-LF
5						
6						
7						
8						
9						
10						
11						
12						
13						
14						
15				152121 (28)	154613 (28)	155294N
16				152121	154613	155294N
17				152121	152089	155294N
18				153670	152660 (30)	155159P UNIV
19						
20						
21				152642	152660	155204 PN
22						
23						
24				152641 (29)	152660 (29)	152672 UCS
25						
26				152121 (35)	154613 (35)	153440 UNIV
27				157207	154613	153440 UNIV
28	152121 [15]	154613 [15]	152693UC-BL	157206	152660	155129SP (1)
29	152641 [24]	152660 [24]	152673 UCH			
30	152641 [4]	152660 [18]	153437PUCS			
31						
32						
33						
34						
35	152121 [26]	154613 [26]	152669 BL			
36	152642 [39]		152669BL	152641		152668 LF
37				152121	154613	152667 CR
38						
39				152642(36)	152660	152671 ACR-LF
40	152642 [42]	152660 [42]	153435P-LF			
41						
42				152642 (40)	152660 (40)	155159P UNIV

INSTRUCTIONS:

- See Figure 1 for typical assembly of shift slides and parts in stunt box slots.
- Use 153604 Pawl in slot 38.
Use 153598 Pawl in slot 39.
Use 152653 Pawls in all other occupied slots.
Remove and utilize the 152653 Pawls from Slots 1, 29, 30, 35, 38 and 40.
- Slot 17-Add shift slide assembly using 155938 Slide.
- Discard the 152127 Clips over Slots 28 and 35, the 172500 Contact Assembly and the Cable. Install the 172519 and 172508 Contact Assemblies above Slots 21, 22, 23, 24, 27, 28, 29, and 30. Wire the contact assemblies with a 145302 Cable to the stunt box per 4228WD which is included in the kit.

- Replace screw stamped AR with screw stamped AHL.

CONVERSION CHART FOR THE 194765 MODIFICATION KIT
TO CONVERY AR STUNT BOX TO AGC STUNT BOX

[] Indicates slot relocated in.

() Indicates slot taken from.

SLOT	REMOVE			ADD		
	LEVER	LATCH OR PLATE	BAR	LEVER	LATCH OR PLATE	BAR
1						
2						
3						
4						
5						
6						
7						
8						
9						
10						
11						
12						
13						
14						
15						
16						
17				152642(36)	152660(36)	153162UCG
18						
19						
20						
21						
22						
23						
24						
25						
26						
27						
28	152121	154613	152693 UC-BL	152641	152660	153160UCF
29	152641 [42]			152642		
30			153437 UCS			152672 UCS
31						
32						
33						
34						
35	152121	154613	152669 BL			
36	152642 [17]	152660 [17]	152669 BL			
37						
38						
39						
40						
41						
42				152641 (29)	152660	153161UCZ

INSTRUCTIONS:

- See Figure 1 for typical assembly of shift slides and parts in stunt box slots.
- Use 152653 Pawls in all occupied slots. Remove and discard 152653 Pawls not being used.
- Discard the 152127 Clips over Slots 28 and 35, the 172500 Contact Assembly and Cable. Install the 172538 Contact Assembly above Slots 27, 28, 29 and 30. Wire the contact assembly with a 163968 Cable to the stunt box per 3762WD which is included in the kit.
- Install the 176642 Clip over Slot 42 to block out UCZ.
- Replace screw stamped AR with screw stamped AGC.

CONVERSION CHART FOR THE 194896 MODIFICATION KIT
TO CONVERT AR STUNT BOX TO AX STUNT BOX

[] Indicates slot relocated in.

() indicates slot taken from.

SLOT	REMOVE			ADD		
	LEVER	LATCH OR PLATE	BAR	LEVER	LATCH OR PLATE	BAR
1						
2						
3						
4						
5						
6						
7						
8						
9						
10						
11						
12						
13						
14						
15						
16						
17						
18						
19						
20						
21						
22	152641	152660	152669 BL			
23						
24						
25						
26						
27						
28	152121	154613	152693 UC-BL			
29	152641	152660	152673 UCH			
30	152641	152660	153437PUCS			
31						
32						
33						
34						
35	152121	154613	152669 BL			
36	152642	152660	152669 BL			
37						
38	152641 [40]	152660	152668 LF			
39						
40	152642		153435P-LF	152641 (38)		152667CR
41						
42						

INSTRUCTIONS:

1. See Figure 1 for typical assembly of shift slides and parts in stunt box slots.
2. Use 152653 Pawls in all occupied slots.
Remove and discard 152653 Pawls not being used in Slots 22, 28, 29, 30, 35, 36 and 38.
3. Replace screw stamped AR with screw stamped AX.
4. Discard the 152127 Clips over slots 28 and 35, the 172500 Contact Assembly and the Cable.