

REGULATIONS FOR THE STATE BOARD OF EQUALIZATION

REGULATIONS

ARTICLE

SECTION	SECTION	SECTION	SECTION	SECTION	SECTION
1	2	3	4	5	6
7	8	9	10	11	12
13	14	15	16	17	18
19	20	21	22	23	24
25	26	27	28	29	30
31	32	33	34	35	36
37	38	39	40	41	42
43	44	45	46	47	48
49	50	51	52	53	54
55	56	57	58	59	60
61	62	63	64	65	66
67	68	69	70	71	72
73	74	75	76	77	78
79	80	81	82	83	84
85	86	87	88	89	90
91	92	93	94	95	96
97	98	99	100	101	102

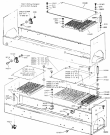


FIGURE 1. COMPONENTS AND ASSEMBLY POINTS

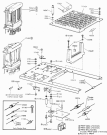


FIGURE 10. FRONT SEAT FROM THE SEVEN-SEATER SEAT (PARTS LIST)

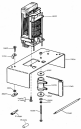


FIGURE 1

FIGURE 2. THREE-DIMENSIONAL GLASS PLATE STACK

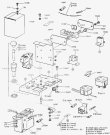


FIGURE 1. STYRENE MONOMER EXTRACTION SYSTEM

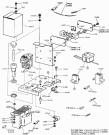


FIGURE 1. TEST TUBE WATER OPERATING MACHINE

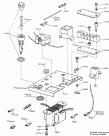


FIGURE 2. 2000 HONDA CIVIC 1.8i ENGINE AND TRANSMISSION ASSEMBLY

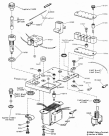


Figure 3. Schematic diagram of the mouse brainstem showing the location of various cell lines and their projections.

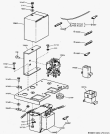


FIGURE 1. 1000W TRANSFORMER MODEL



FIG. 10.10.10.1

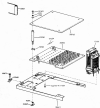


FIGURE 10-1000-000000



FIGURE 10. EXPLODED VIEW OF A RECTANGULAR BOX



FIGURE 11. EXPLODED VIEW OF A MECHANICAL ASSEMBLY



FIGURE 10-10

FIGURE 10-11



FIGURE 10-12

FIGURE 10-13

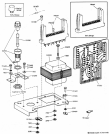


FIGURE 10. BENCHTOP MICROANALYZER

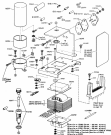


FIGURE 10-1 Exploded view of a mechanical assembly.

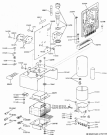


FIGURE 10-10000-0000 MECHANICAL ASSEMBLY EXPLODED VIEW

10-10000-0000

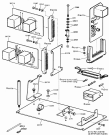


FIGURE 10-10 Exploded view of a mechanical assembly

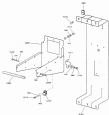


FIGURE 6.2. IDENTIFICATION BLIND FOR ANALYSIS (MATERIAL: STEEL; FINISH: ZINC PLATE)

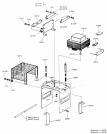


FIGURE 2. **EXPLODED VIEW OF THE MECHANICAL ASSEMBLY.**

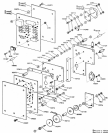


FIGURE 10. PHOTO COURTESY OF THE U.S. ARMY AND THE U.S. MARINE CORPS. (FOR INFORMATIONAL PURPOSES ONLY)

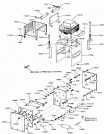


FIGURE 101. HYDRAULIC SYSTEM

101
102
103
104
105
106
107
108
109
110
111
112
113
114
115
116
117
118
119
120
121
122
123
124
125
126
127
128
129
130
131
132
133
134
135
136
137
138
139
140
141
142
143
144
145
146
147
148
149
150
151
152
153
154
155
156
157
158
159
160
161
162
163
164
165
166
167
168
169
170
171
172
173
174
175
176
177
178
179
180
181
182
183
184
185
186
187
188
189
190
191
192
193
194
195
196
197
198
199
200

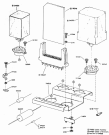


FIGURE 10-10 Exploded view of a mechanical assembly.



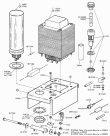


FIGURE 5.2. MICROSCOPE INSTRUMENTATION

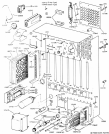


FIGURE 21. THREE-STORY BUILDING STRUCTURE

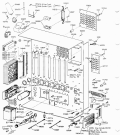


FIGURE 1. MECHANICAL ASSEMBLY EXPLODED VIEW

2 3 4 5 6 7 8 9 10 11 12 13 14 15 16 17 18 19 20 21 22 23 24 25 26 27 28 29 30 31 32 33 34 35 36 37 38 39 40 41 42 43 44 45 46 47 48 49 50 51 52 53 54 55 56 57 58 59 60 61 62 63 64 65 66 67 68 69 70 71 72 73 74 75 76 77 78 79 80 81 82 83 84 85 86 87 88 89 90 91 92 93 94 95 96 97 98 99 100

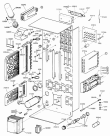


FIGURE 1. EXPLODED VIEW OF THE MECHANICAL ASSEMBLY

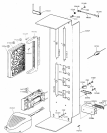


FIGURE 21. FRONT LOWER CONTROL ARM AND STEERING RACK

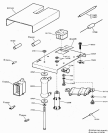


FIGURE 10. EXPLODED VIEW DRAWING

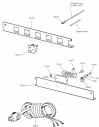


FIGURE 1. SPRING MOUNTED SUSPENSION



FIGURE 1. BENTON & BOWLES

		COSTA RICA		COSTA RICA	
Year	Population (thousands)	Year	Population (thousands)	Year	Population (thousands)
1980	1,800	1980	1,800	1980	1,800
1981	1,810	1981	1,810	1981	1,810
1982	1,820	1982	1,820	1982	1,820
1983	1,830	1983	1,830	1983	1,830
1984	1,840	1984	1,840	1984	1,840
1985	1,850	1985	1,850	1985	1,850
1986	1,860	1986	1,860	1986	1,860
1987	1,870	1987	1,870	1987	1,870
1988	1,880	1988	1,880	1988	1,880
1989	1,890	1989	1,890	1989	1,890
1990	1,900	1990	1,900	1990	1,900
1991	1,910	1991	1,910	1991	1,910
1992	1,920	1992	1,920	1992	1,920
1993	1,930	1993	1,930	1993	1,930
1994	1,940	1994	1,940	1994	1,940
1995	1,950	1995	1,950	1995	1,950
1996	1,960	1996	1,960	1996	1,960
1997	1,970	1997	1,970	1997	1,970
1998	1,980	1998	1,980	1998	1,980
1999	1,990	1999	1,990	1999	1,990
2000	2,000	2000	2,000	2000	2,000
2001	2,010	2001	2,010	2001	2,010
2002	2,020	2002	2,020	2002	2,020
2003	2,030	2003	2,030	2003	2,030
2004	2,040	2004	2,040	2004	2,040
2005	2,050	2005	2,050	2005	2,050
2006	2,060	2006	2,060	2006	2,060
2007	2,070	2007	2,070	2007	2,070
2008	2,080	2008	2,080	2008	2,080
2009	2,090	2009	2,090	2009	2,090
2010	2,100	2010	2,100	2010	2,100
2011	2,110	2011	2,110	2011	2,110
2012	2,120	2012	2,120	2012	2,120
2013	2,130	2013	2,130	2013	2,130
2014	2,140	2014	2,140	2014	2,140
2015	2,150	2015	2,150	2015	2,150
2016	2,160	2016	2,160	2016	2,160
2017	2,170	2017	2,170	2017	2,170
2018	2,180	2018	2,180	2018	2,180
2019	2,190	2019	2,190	2019	2,190
2020	2,200	2020	2,200	2020	2,200

STANDARD INFORMATION

CLASSIFICATION	EXEMPTION	CLASSIFICATION	EXEMPTION	CLASSIFICATION	EXEMPTION
SECRET	FOIA(b)(1)	SECRET	FOIA(b)(1)	SECRET	FOIA(b)(1)
SECRET	FOIA(b)(7)(C)	SECRET	FOIA(b)(7)(C)	SECRET	FOIA(b)(7)(C)
SECRET	FOIA(b)(7)(D)	SECRET	FOIA(b)(7)(D)	SECRET	FOIA(b)(7)(D)
SECRET	FOIA(b)(7)(E)	SECRET	FOIA(b)(7)(E)	SECRET	FOIA(b)(7)(E)
SECRET	FOIA(b)(7)(F)	SECRET	FOIA(b)(7)(F)	SECRET	FOIA(b)(7)(F)
SECRET	FOIA(b)(7)(G)	SECRET	FOIA(b)(7)(G)	SECRET	FOIA(b)(7)(G)
SECRET	FOIA(b)(7)(H)	SECRET	FOIA(b)(7)(H)	SECRET	FOIA(b)(7)(H)
SECRET	FOIA(b)(7)(I)	SECRET	FOIA(b)(7)(I)	SECRET	FOIA(b)(7)(I)
SECRET	FOIA(b)(7)(J)	SECRET	FOIA(b)(7)(J)	SECRET	FOIA(b)(7)(J)
SECRET	FOIA(b)(7)(K)	SECRET	FOIA(b)(7)(K)	SECRET	FOIA(b)(7)(K)
SECRET	FOIA(b)(7)(L)	SECRET	FOIA(b)(7)(L)	SECRET	FOIA(b)(7)(L)
SECRET	FOIA(b)(7)(M)	SECRET	FOIA(b)(7)(M)	SECRET	FOIA(b)(7)(M)
SECRET	FOIA(b)(7)(N)	SECRET	FOIA(b)(7)(N)	SECRET	FOIA(b)(7)(N)
SECRET	FOIA(b)(7)(O)	SECRET	FOIA(b)(7)(O)	SECRET	FOIA(b)(7)(O)
SECRET	FOIA(b)(7)(P)	SECRET	FOIA(b)(7)(P)	SECRET	FOIA(b)(7)(P)
SECRET	FOIA(b)(7)(Q)	SECRET	FOIA(b)(7)(Q)	SECRET	FOIA(b)(7)(Q)
SECRET	FOIA(b)(7)(R)	SECRET	FOIA(b)(7)(R)	SECRET	FOIA(b)(7)(R)
SECRET	FOIA(b)(7)(S)	SECRET	FOIA(b)(7)(S)	SECRET	FOIA(b)(7)(S)
SECRET	FOIA(b)(7)(T)	SECRET	FOIA(b)(7)(T)	SECRET	FOIA(b)(7)(T)
SECRET	FOIA(b)(7)(U)	SECRET	FOIA(b)(7)(U)	SECRET	FOIA(b)(7)(U)
SECRET	FOIA(b)(7)(V)	SECRET	FOIA(b)(7)(V)	SECRET	FOIA(b)(7)(V)
SECRET	FOIA(b)(7)(W)	SECRET	FOIA(b)(7)(W)	SECRET	FOIA(b)(7)(W)
SECRET	FOIA(b)(7)(X)	SECRET	FOIA(b)(7)(X)	SECRET	FOIA(b)(7)(X)
SECRET	FOIA(b)(7)(Y)	SECRET	FOIA(b)(7)(Y)	SECRET	FOIA(b)(7)(Y)
SECRET	FOIA(b)(7)(Z)	SECRET	FOIA(b)(7)(Z)	SECRET	FOIA(b)(7)(Z)