

**INSTRUCTIONS (FOR THE TESTER)**

**GENERAL INFORMATION**

- 1. PURPOSE**
- 1.1. TO MEASURE THE KNOWLEDGE OF THE TESTER
  - 1.2. TO MEASURE THE ABILITY OF THE TESTER TO APPLY HIS KNOWLEDGE TO THE SOLUTION OF PROBLEMS
  - 1.3. TO MEASURE THE ABILITY OF THE TESTER TO APPLY HIS KNOWLEDGE TO THE SOLUTION OF PROBLEMS

**2. SCOPE**

2.1. THIS TEST IS DESIGNED TO MEASURE THE KNOWLEDGE AND ABILITY OF THE TESTER TO APPLY HIS KNOWLEDGE TO THE SOLUTION OF PROBLEMS.

2.2. THE INSTRUMENT IS DESIGNED TO MEASURE THE KNOWLEDGE AND ABILITY OF THE TESTER TO APPLY HIS KNOWLEDGE TO THE SOLUTION OF PROBLEMS.

2.3. THE INSTRUMENT IS DESIGNED TO MEASURE THE KNOWLEDGE AND ABILITY OF THE TESTER TO APPLY HIS KNOWLEDGE TO THE SOLUTION OF PROBLEMS.

2.4. THE INSTRUMENT IS DESIGNED TO MEASURE THE KNOWLEDGE AND ABILITY OF THE TESTER TO APPLY HIS KNOWLEDGE TO THE SOLUTION OF PROBLEMS.

2.5. THE INSTRUMENT IS DESIGNED TO MEASURE THE KNOWLEDGE AND ABILITY OF THE TESTER TO APPLY HIS KNOWLEDGE TO THE SOLUTION OF PROBLEMS.

2.6. THE INSTRUMENT IS DESIGNED TO MEASURE THE KNOWLEDGE AND ABILITY OF THE TESTER TO APPLY HIS KNOWLEDGE TO THE SOLUTION OF PROBLEMS.

2.7. THE INSTRUMENT IS DESIGNED TO MEASURE THE KNOWLEDGE AND ABILITY OF THE TESTER TO APPLY HIS KNOWLEDGE TO THE SOLUTION OF PROBLEMS.

2.8. THE INSTRUMENT IS DESIGNED TO MEASURE THE KNOWLEDGE AND ABILITY OF THE TESTER TO APPLY HIS KNOWLEDGE TO THE SOLUTION OF PROBLEMS.

2.9. THE INSTRUMENT IS DESIGNED TO MEASURE THE KNOWLEDGE AND ABILITY OF THE TESTER TO APPLY HIS KNOWLEDGE TO THE SOLUTION OF PROBLEMS.

2.10. THE INSTRUMENT IS DESIGNED TO MEASURE THE KNOWLEDGE AND ABILITY OF THE TESTER TO APPLY HIS KNOWLEDGE TO THE SOLUTION OF PROBLEMS.

2.11. THE INSTRUMENT IS DESIGNED TO MEASURE THE KNOWLEDGE AND ABILITY OF THE TESTER TO APPLY HIS KNOWLEDGE TO THE SOLUTION OF PROBLEMS.

2.12. THE INSTRUMENT IS DESIGNED TO MEASURE THE KNOWLEDGE AND ABILITY OF THE TESTER TO APPLY HIS KNOWLEDGE TO THE SOLUTION OF PROBLEMS.

**3. GENERAL INSTRUCTIONS**

3.1. THE INSTRUMENT IS DESIGNED TO MEASURE THE KNOWLEDGE AND ABILITY OF THE TESTER TO APPLY HIS KNOWLEDGE TO THE SOLUTION OF PROBLEMS.



Figure 3 - Experiment

**4. CONCLUSIONS AND RECOMMENDATIONS (May 1971 - 1972)**

1. The University should be encouraged to continue its efforts in providing quality education through its various departments.

**4.1. General**

- 1. The University should continue to provide the best quality of education through its various departments.
- 2. The University should continue to provide the best quality of education through its various departments.

**4.2. The Staff**

- 1. The University should continue to provide the best quality of education through its various departments.
- 2. The University should continue to provide the best quality of education through its various departments.
- 3. The University should continue to provide the best quality of education through its various departments.

**4.3. The Study Plan**

- 1. The University should continue to provide the best quality of education through its various departments.
- 2. The University should continue to provide the best quality of education through its various departments.
- 3. The University should continue to provide the best quality of education through its various departments.
- 4. The University should continue to provide the best quality of education through its various departments.
- 5. The University should continue to provide the best quality of education through its various departments.

**4.4. The Student**

- 1. The University should continue to provide the best quality of education through its various departments.
- 2. The University should continue to provide the best quality of education through its various departments.

**5. THE STUDY PLAN**

- 1. The University should continue to provide the best quality of education through its various departments.
- 2. The University should continue to provide the best quality of education through its various departments.
- 3. The University should continue to provide the best quality of education through its various departments.
- 4. The University should continue to provide the best quality of education through its various departments.
- 5. The University should continue to provide the best quality of education through its various departments.
- 6. The University should continue to provide the best quality of education through its various departments.
- 7. The University should continue to provide the best quality of education through its various departments.
- 8. The University should continue to provide the best quality of education through its various departments.
- 9. The University should continue to provide the best quality of education through its various departments.
- 10. The University should continue to provide the best quality of education through its various departments.

**5.1. General**

- 1. The University should continue to provide the best quality of education through its various departments.
- 2. The University should continue to provide the best quality of education through its various departments.

**5.2. The Study Plan**

- 1. The University should continue to provide the best quality of education through its various departments.
- 2. The University should continue to provide the best quality of education through its various departments.
- 3. The University should continue to provide the best quality of education through its various departments.
- 4. The University should continue to provide the best quality of education through its various departments.

**5.3. RECOMMENDATIONS TO THE STUDENT**

- 1. The University should continue to provide the best quality of education through its various departments.
- 2. The University should continue to provide the best quality of education through its various departments.
- 3. The University should continue to provide the best quality of education through its various departments.
- 4. The University should continue to provide the best quality of education through its various departments.
- 5. The University should continue to provide the best quality of education through its various departments.

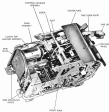


Figure 1: Eye Anatomy (Front and Side View)