

CHANGES AND ADDITIONS
BULLETIN NO. 1077 (ISSUE 3)
PARTS - TABLES

THE INFORMATION CONTAINED IN THIS CORRECTION SHEET APPLIES TO
TABLES USED FOR SHIPBOARD OPERATION ONLY

This correction sheet covers parts ordering information for the XRT119 and XRT114 metal tables.

The XRT119 table (for use with Model 15 printer set) is finished in black wrinkle, equipped with lord mountings and has angle iron brackets welded to each of the four legs for deck mounting.

The XRT114 table (for use with 19 type set) is finished in black wrinkle, equipped with lord mountings and has angle irons welded to inner left and right sides between the front and rear legs for deck mounting.

XRT119 Table

Pages 1 and 2

The following ordering information should be substituted for that shown on pages 1 and 2:

The following parts constitute the rubber printer mountings:

104018	Lord Mounting	
1187	Mounting Screw (for 104018)) Top
2669	Lock Washer (for 1187)	
104017	Spacer (for 104018)	
2669	Lock Washer (for 1187)) Bottom
34-4	Nut (for 1187)	

The following parts are used in conjunction with the rubber mountings:

102809	Stud (Mounts in 103163)) See
83814	Spacer Washer (Between 103163 and 73175)	
73175	Lock Washer (Between 83814 and 102809)	EE-442
103377	Washer - Large)
2920	Lock Washer) for 102809 (Bottom)
85595	Nut)

The following is a list of miscellaneous parts that are mounted on the top of the table:

103167	Pad - Felt	
104057	Cover Holding Bracket	
104059	Spacer Block)
78301	Mounting Screw) for 104057
2669	Lock Washer)

All of the electrical service parts are housed in a metal container which may be ordered as 105014 Electrical Service (Assem.) and is illustrated on page 4 of this correction sheet.

The XRT119 table is wired in accordance with wiring diagram W.D.-2146.

XRT114 Table

Page 11

The following parts constitute the rubber printer mountings:

99908	Lord Mounting	
1187	Mounting Screw (for 99908)) Top
2669	Lock washer (for 1187)	
104017	Spacer (for 99908)	
2669	Lock washer (for 1187)) Bottom
3/4-4	Nut (for 1187)	

The following parts are used in conjunction with the rubber mountings:

102809	Stud (Mounts in 103163)) See
83814	Spacer Washer (Between 103163 and 73175)) EE-442
73175	Lock Washer (Between 83814 and 102809)	
103377	Washer - Large)
2920	Lock Washer) for 102809 (Bottom)
85595	Nut)

Following is a list of miscellaneous parts that are mounted on the top of the table:

99964	Pad - Felt (For perforator transmitter)	
104057	Cover Holding Bracket	
104059	Spacer Block)
78301	Mounting Screw) for 104057
2669	Lock washer)

The 84103 mounting plate (assem.) has been replaced by a 104035 mounting plate (assem.).

(See note under heading "Page 13" for details.)

The 92765 mounting plate pad has been replaced by a 104032 mounting plate pad.

Page 12

Two 95005 resistors (2500 ohms each) have been added in back of the 91859 "line jack". Each resistor is mounted by means of a 92271 screw, 2191 lockwasher, 76099 washer and three 75750 washer - bakelite.

A 103287 fusetrone (1.25 amp.) and a 103288 fusetrone (1.40 amp.) are furnished with the table. For proper usage of these fusetrone refer to wiring diagram W.D.-2161.

A 105855 terminal strip (with terminal screws) has been added at each end of the three short terminal blocks. These terminal strips are mounted in a vertical position on the upper and lower terminal blocks by means of 73235 screws (replacing 1169 screws) 2191 lock washers and 200-148 spacers.

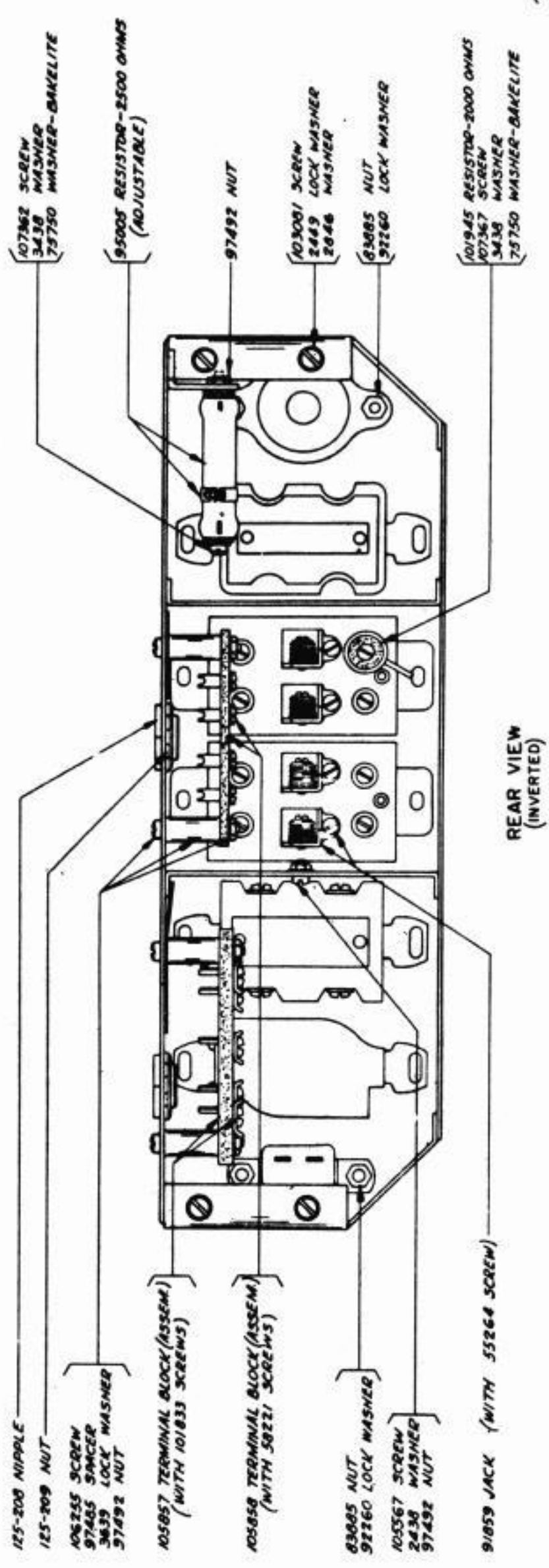
The following parts have been added above the three receptacles illustrated in the lower right hand side of the table:

105206	Plug (4 prong)	1
1176	Screw)	2
2191	Lock washer) for 105206	2
105205	Bracket (for 105206)	1
33-4	Screw)	4
2191	Lock washer) for 105205	4
7002	Washer)	4
105391	Knife Switch - 4P.D.T.	1
80757	Screw)	2
2669	Lock washer) for 105391	2
34-58	Nut)	2

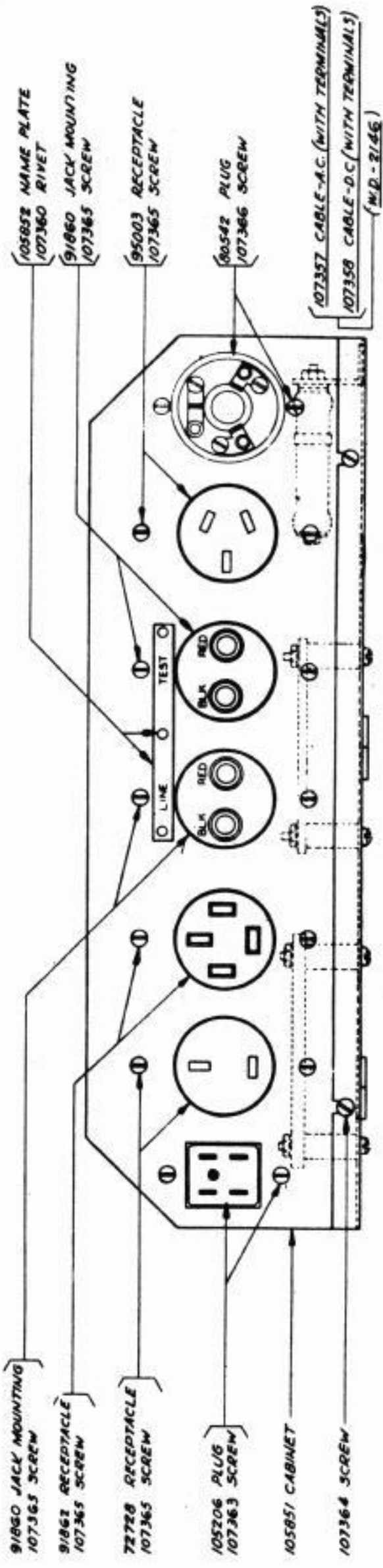
Page 13

The 84103 mounting plate (assem.) has been replaced by a 104035 mounting plate (assem.) and differs in that a 104033 mounting plate, which has a clearance hole for a 110422 thumb screw and 110727 retaining ring (not included in 104035) is used in place of the 77597 mounting plate. Two guards have been added under the 77625 slip connection guard and may be ordered as 105187 guard - left and 105188 guard - right.

The XRT114 table is wired in accordance with wiring diagrams W.D.-2161 and W.D.-2162.



REAR VIEW
(INVERTED)



FRONT VIEW

105014 ELECTRICAL SERVICE (ASSEM.) - BLACK WRINKLE
(PART OF XRT119 TABLE)