

CHANGES AND ADDITIONS  
TO PARTS BULLETINS  
COVERING TYPE BAR PAGE PRINTERS  
(MODEL 15 AND 20)

Model 15

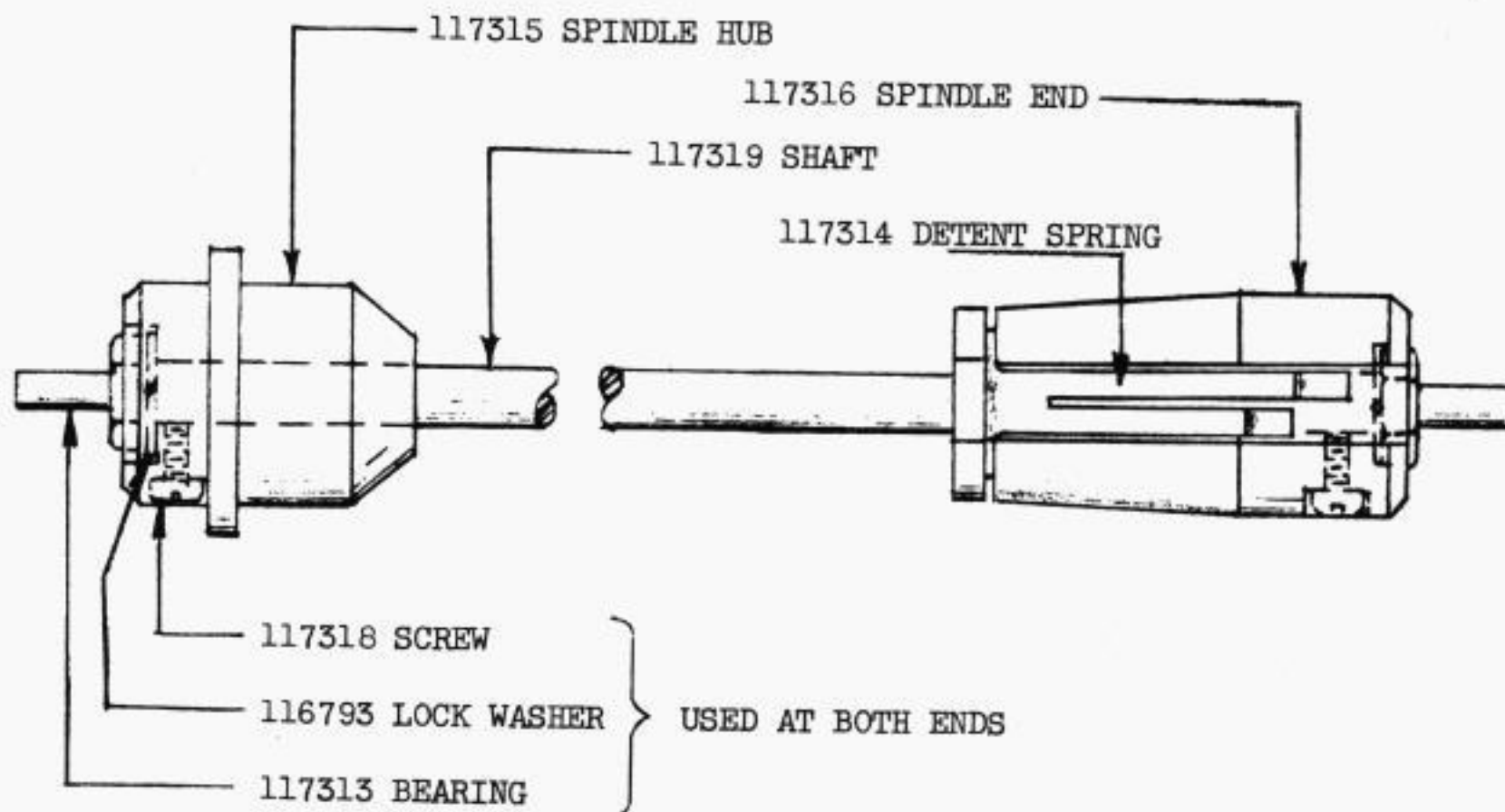
1037 Issue 4  
1094 Issue 2  
1110 Issue 2  
1114 Issue 1

Model 20

1063 Issue 2

The 74876, 74922, 80455, 88020, and 91111 paper roll spindle assemblies (wood) shown in the above bulletins, have been replaced by a new style 117313 Paper Roll Spindle Assembly (Metal).

The 117313 is adjustable so as to accommodate all widths of paper. The drawing below illustrates the component parts of the new design.



117313 PAPER ROLL SPINDLE (ASSEM.)  
(Adjustable)