

INSTRUCTIONS FOR INSTALLING THE 93884  
SET OF FILTER PARTS ON MODELS 15 OR 20  
KEYBOARDS AND MODEL 15 PERFORATOR TRANSMITTERS

JUN 14 1956

1. GENERAL

a. The 93884 set of parts, which consists of the 92222 and 93883 sets of parts, supersedes the 74978 and 82019 filters. The 93884 set of parts is used to suppress radio frequency induction caused by the keyboard contacts. The range of effectiveness of this set of filter parts includes short wave bands.

b. The 92222 set of parts consists of the following:

*1	105964	Filter Assembly
2	6746	Screw
5	7002	Washer
2	8539	Screw

c. The 93883 set of parts consists of the following:

*1	105966	Condenser Assembly
1	75400	Screw
1	78103	Screw
1	2191	Lock Washer
1	7002	Washer
1	3598	Nut

d. For numbers referred to in the following text, which are not included in the above set of parts, refer to the parts bulletins.

2. INSTRUCTIONS FOR REMOVAL OF 74978 AND 82019 KEYBOARD TRANSMITTING CONTACT FILTERS

a. If unit is equipped with a 74978 or 82019 transmitting contact filter, it must be removed before installing the 92222 filter.

(1) Unsolder from the filter the keyboard lead which is connected to terminal 54, and the keyboard lead which is connected to the local test key. Unsolder the filter leads from the transmitting contacts.

(2) Remove and discard the old style filter and its mounting screws. Secure the local test key bracket with 6746 screws (furnished) and 2191 lock washers (previously removed).

(3) Connect the keyboard lead from the local test key (which has been unsoldered from the filter unit) to the left-hand terminal of the transmitting contacts.

3. INSTALLATION OF THE 92222 FILTER ON THE MODELS 15 OR 20 KEYBOARDS ONLY

a. Remove the two 6746 screws which secure the 7387 brace to the 7382 front bracket. Retain the 2191 lock washers and the 41663 flat washers.

b. Mount the filter bracket against the 7382 front bracket so that the coil and condensers are to the rear of the filter bracket, with the coil to the left. Using the previously removed 2191 lock washers and 41663 flat washers under the

\*Indicates change

Printed in U.S.A.

heads of the 8539 screws (furnished), and spacing the filter unit away from the front bracket with two 7002 flat washers (furnished) on each screw, secure the filter bracket to the front bracket and brace. Rotate the filter bracket clockwise until it stops against the 7383 oiler. Tighten the 8539 screws.

c. Secure the terminal of the wire shielding tube and the 7002 washer under the head of the transmitting contacts mounting screw just in front of the transmitting contacts soldering terminals, placing the terminal between the bracket and 7002 washer.

NOTE

If the keyboard was not equipped with a 74978 or 82019 filter, the two 6746 screws furnished with the 92222 filter unit may be discarded.

4. INSTALLATION OF THE 92222 FILTER UNIT ON MODEL 15 PERFORATOR TRANSMITTER ONLY

a. Remove the two 74986 screws which secure the 84911 bracket and the 7382 front bracket to the 7387 brace. Retain the 2191 lock washers and the 41663 flat washers. Discard the 74986 screws.

b. Discard the 7002 flat washers furnished with the filter. Mount the filter bracket against the 84911 bracket so that the coil and condensers are to the rear of the filter bracket, with the coil to the left. Using the 8539 screws furnished and the previously removed 2191 lock washers, and 41663 flat washers, secure the filter bracket, the 84911 bracket, and the 7382 front bracket to the 7387 brace. Rotate the filter bracket clockwise until it stops against the 7383 oiler. Tighten the 8539 screws.

c. Secure the terminal of the wire shielding tube and the 7002 washer under the head of the transmitting contacts mounting screw just to the front of the transmitting contacts soldering terminals, placing the terminal between the bracket and the 7002 washer.

NOTE

If the perforator transmitter was not equipped with a 74978 or 82019 filter, the two 6746 screws furnished with the 92222 filter unit may be discarded.

5. WIRING INSTRUCTIONS FOR THE 92222 FILTER ON MODELS 15 OR 20 KEYBOARDS AND MODEL 15 PERFORATOR TRANSMITTERS (See Wiring Diagram WD-1681 attached.)

a. If the lead connecting the right-hand terminal of the transmitting contacts to terminal 54 is not already unsoldered, it should now be unsoldered from the right-hand terminal of the transmitting contacts and spliced to the white lead from the filter. (Twist, solder and tape.)

b. Solder the red (shielded) lead from the filter to the right-hand terminal of the transmitting contacts.

c. Solder the black lead to the left-hand terminal of the transmitting contacts.

NOTE

With the foregoing connections made, the wiring should be as shown on wiring diagram WD-1681.

## 6. INSTALLATION OF THE 93883 CONDENSER ASSEMBLY ON THE BASE

a. For bases with three terminal blocks at the right-hand side, install the condenser assembly as follows:

(1) Remove the two 6810 screws and 2669 lock washers which are used to secure the terminal block assembly to the base casting and lift the terminal block assembly away from the base as far as the cable will permit. With either sandpaper or a sharp tool, such as a screw driver, remove the japan finish from the top surfaces of the mounting screw hole areas so that the 2669 lock washers will contact the unfinished surfaces. Replace the terminal block assembly and secure it to the base by means of the screws and lock washers, previously removed.

(2) Replace the rear mounting screw of the rear 73705 terminal block (terminals numbered 41 to 46) with the 75400 screw furnished.

(3) Mount the 105966 condenser assembly against the left side of the 74420 terminal block bracket so that the 75400 screw passes through the elongated hole in the assembly bracket. The lower edge of the assembly bracket should rest against the base casting. Secure the condenser assembly to the terminal block bracket with the 7002 washer, 2191 lock washer, and 3598 nut furnished.

(4) Connect the lead from the condenser to terminal 34.

b. For bases with one 26-terminal block at the right-hand side, install the condenser assembly as follows:

(1) Remove the two 6810 screws and 2669 lock washers which are used to secure the terminal block assembly to the base casting and lift the terminal block assembly away from the base as far as the cable will permit. With either sandpaper or a sharp tool, such as a screw driver, remove the japan finish from the top surfaces of the mounting screw hole areas so that the 2669 lock washer will contact the unfinished surfaces. Replace the terminal block assembly and secure it to the base by means of the screws and lock washers previously removed.

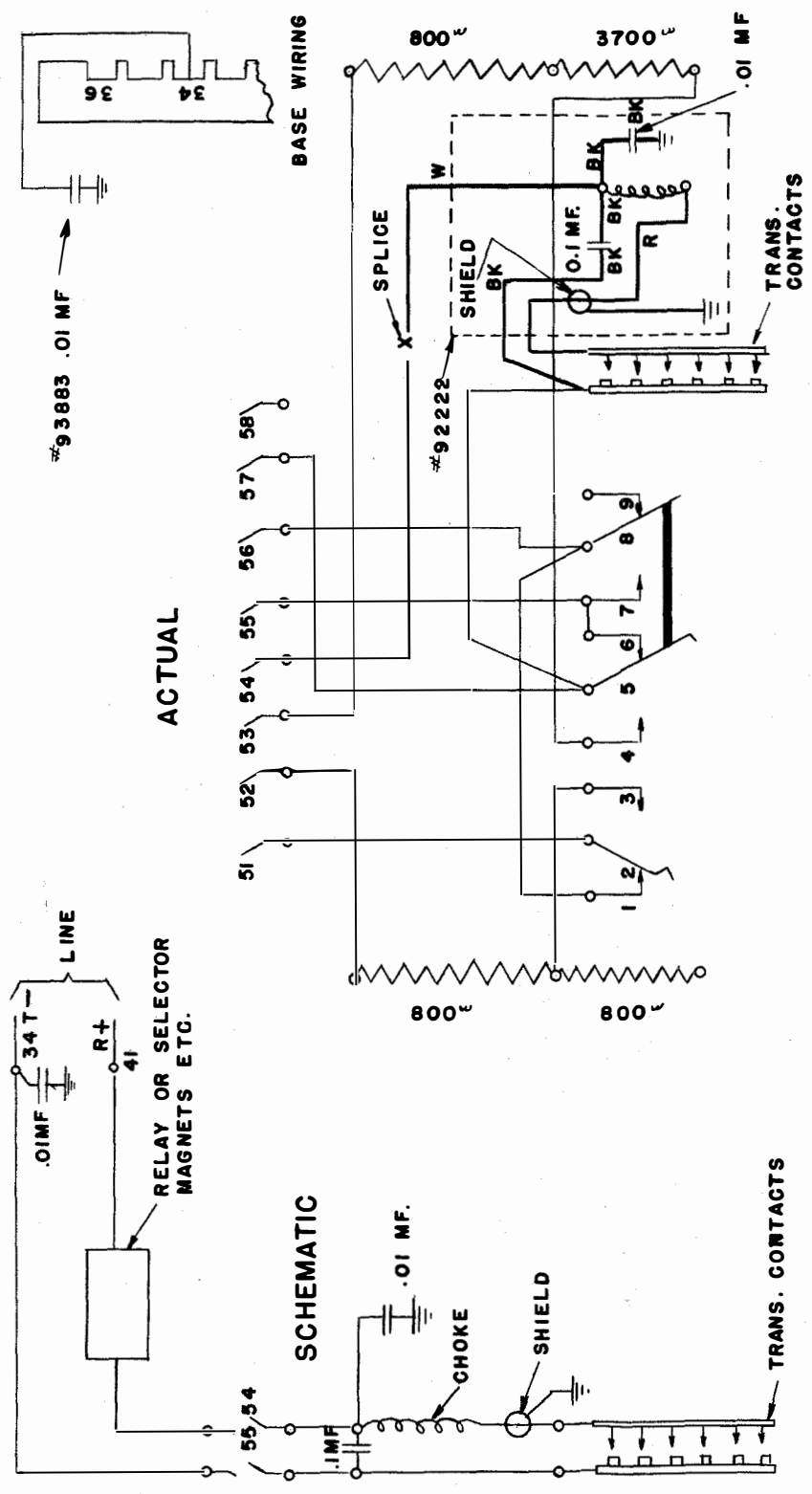
(2) Replace the rear mounting screw of the terminal block with the 78103 screw furnished. Discard the screw (just removed) and the 75400 screw furnished.

(3) Mount the 105966 condenser assembly against the left side of the terminal block bracket so that the 78103 screw passes through the elongated hole in the assembly bracket. The lower edge of the assembly bracket should rest against the base casting. Secure the condenser assembly to the terminal block bracket with the 7002 washer, 2191 lock washer, and 3598 nut furnished.

(4) Connect the lead from the condenser to terminal 34.

\* \* \*

REVISIONS  
 (B) 93883 COND.  
 ADDED.  
 4-26-38 J.J.F.



KEYBOARD WIRING

TELETYPE CORPORATION  
 WD 1681-B

WIRING DIAGRAM FOR 93884  
 TRANSMITTING CONTACTS  
 RADIO FILTER - 15 & 20 TYPE  
 KEYBOARDS 15 TYPE PERF.  
 TRANSMITTER

DRAWN  
 TRACED N.J.W. (R.B.)  
 CHECKED R.E.Z.  
 ENG'D. R.E.Z.  
 APPROVED C.W.B.