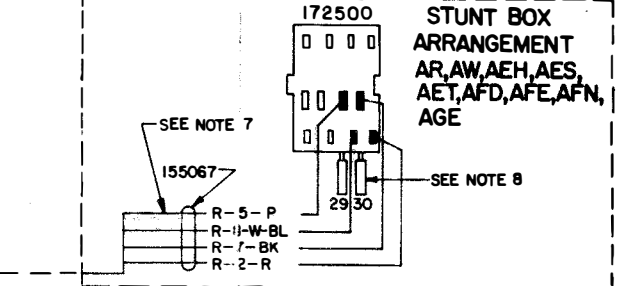
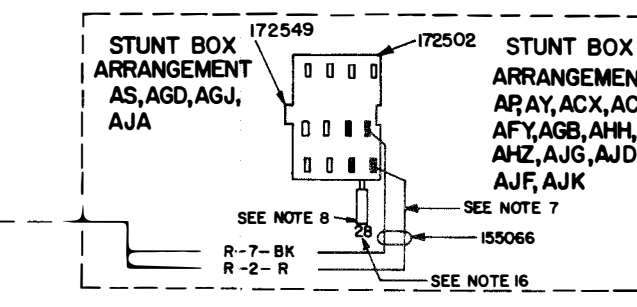
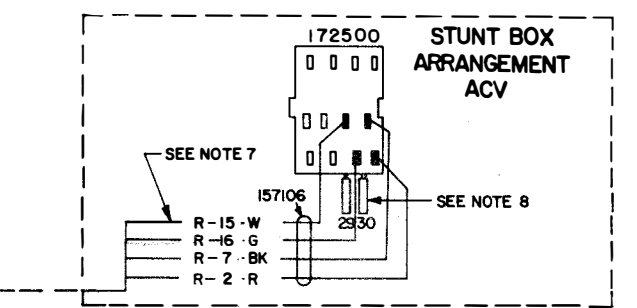
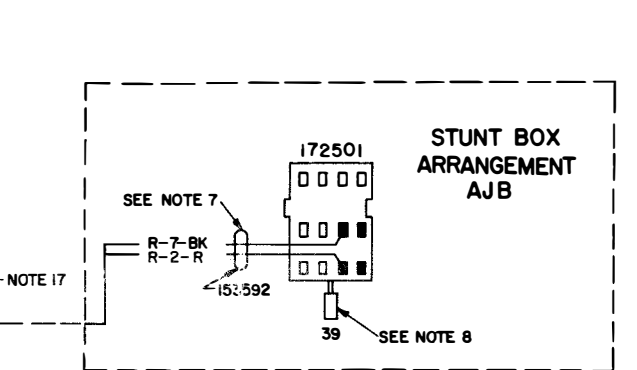
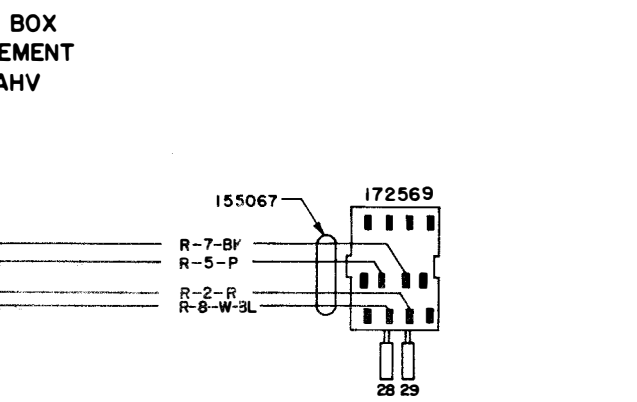
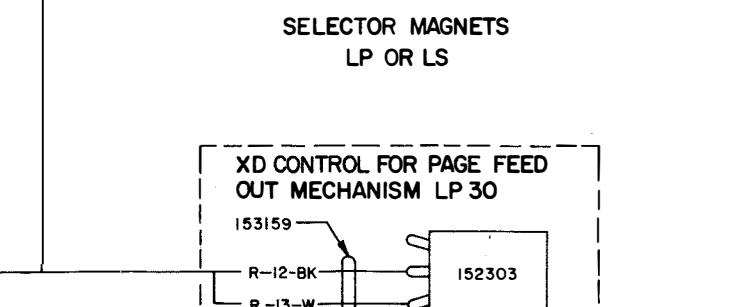
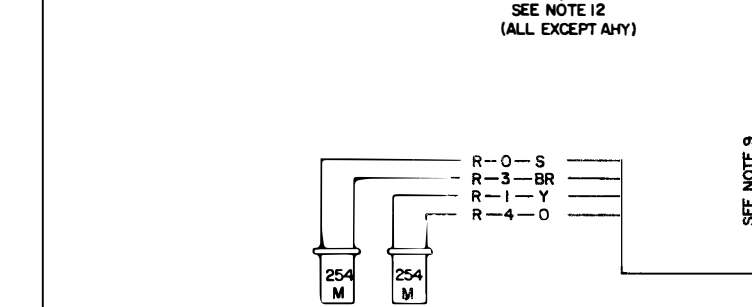
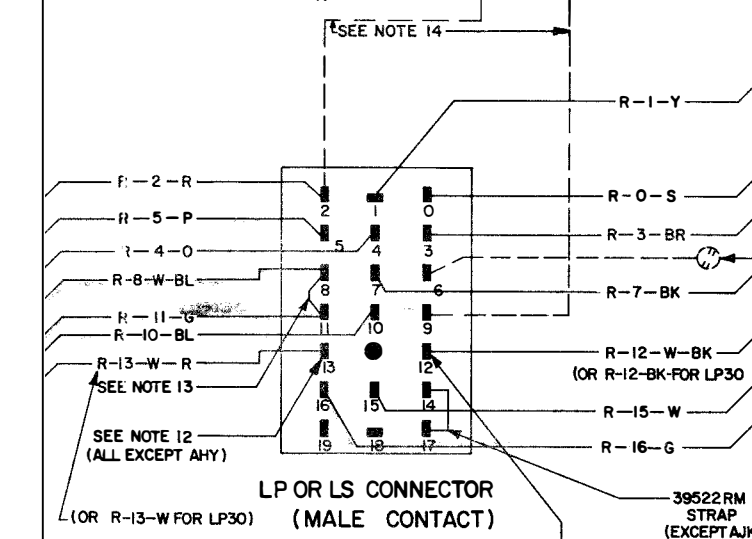
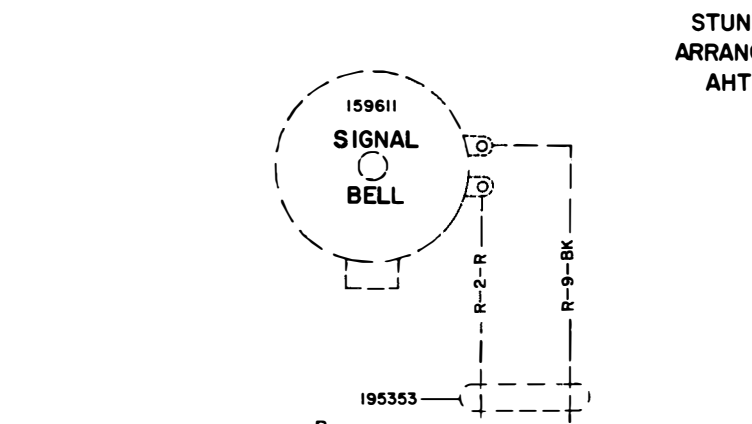
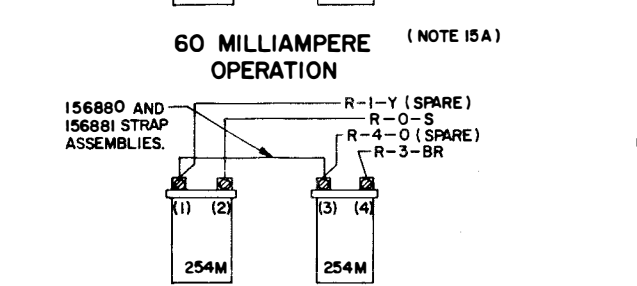
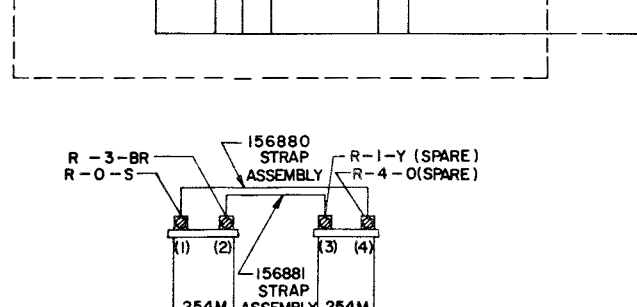
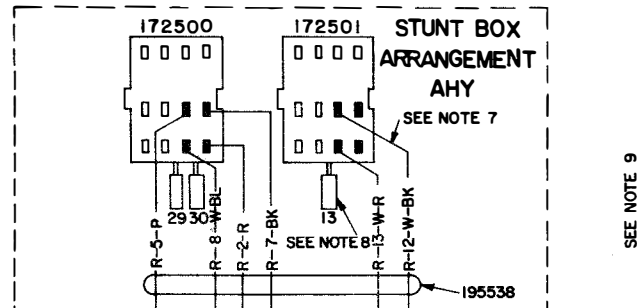
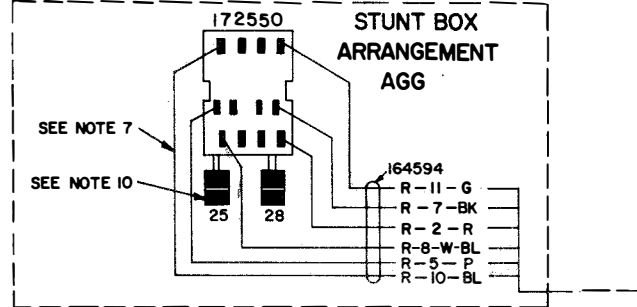
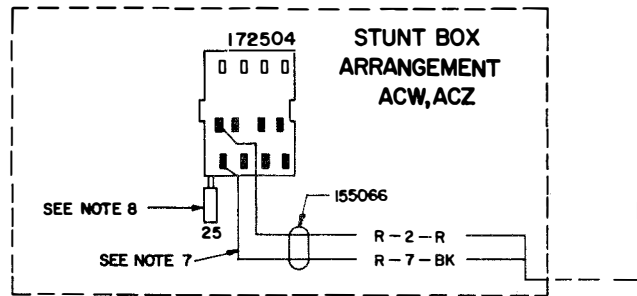
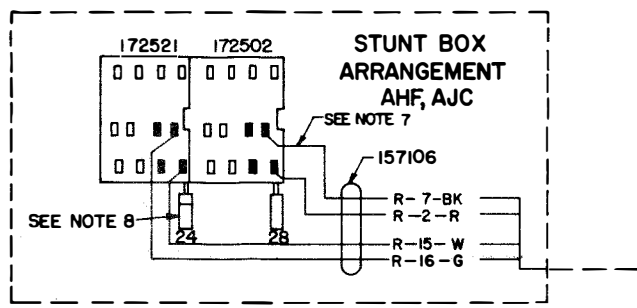


3214 WD

REVISIONS

ISSUE	DATE	AUTH. NO.
41	12-23-63	79185-1
42	1-9-65	65722
43	2-3-65	85959
44	8-25-66	90726
45	7-11-67	94149
46	9-12-68	98086

- NOTES
1. WIRING CHANNEL DESIGNATED BY "R" DOES NOT REPRESENT CABLES, BUT ASSISTS IN TRACING CONNECTIONS.
 2. COLOR CODE:
BK-BLACK BL-BLUE
W-WHITE R-RED
Y-YELLOW BR-BROWN
P-PURPLE O-ORANGE
S-SLATE G-GREEN
 3. COLOR LEGEND:
R- CHANNEL IDENTIFICATION
B- W- CHANNEL WIRE NUMBER
B- W- WIRE COLOR CODE
 - 4.
 5. CONNECTOR VIEWED FROM SOLDERED TERMINAL ENDS.
 - 6.
 7. THESE LEADS FURNISHED WITH FUNCTION BOX.
 8. NORMALLY OPEN CONTACTS
 NORMALLY CLOSED CONTACTS
 9. A COMPLETE LP UNIT USES ONLY ONE STUNT BOX. MAKE APPROXIMATE (---) CONNECTIONS TO COMPLETE CIRCUIT.
 10. TRANSFER CONTACTS
REAR CONTACTS NORMALLY OPEN
REAR CONTACTS NORMALLY CLOSED
 11. THE FOLLOWING STUNT BOXES ARE WITHOUT SWITCH ASSEMBLIES: AX, ADL.
 12. THESE TWO TERMINALS ARE USED WHEN LP IS EQUIPPED WITH XD CONT. PAGE FEED OUT OR XD CONT. HORIZ. TAB. IF BOTH FEATURES ARE USED, THEY ARE WIRED IN SERIES TO THESE TERMINALS.
 13. USE 39522RM STRAP FOR LP 95,96,97,102,122
 14. THE 159611 SIGNAL BELL AND THE 195353 CABLE ASSEMBLY ARE CONTAINED ON THE LP III ONLY.
 15. A. THE LP III IS FACTORY WIRED FOR 60MA OPER.
B. THE LP III MAY BE CONVERTED FOR 20-30MA. OPERATION BY THE CUSTOMER.
 16. FOR AFY STUNT BOX, CONTACT IS OVER SLOT 30.
 17. 195269 STRAP CONNECTED FROM TERMINAL 6 TO CONNECTOR BRACKET MOUNTING SCREW FOR 179613 AND 1796 4 R.F. SUPPRESSION MODIFICATION KITS.



ACTUAL
WIRING DIAGRAM FOR
MODEL 28, TYPING UNITS
LP 14, 15, 16, 17, 20, 21, 23, 26, 27, 28, 30, 31, 34,
38, 39, 43, 44, 55, 56, 60, 65, 67, 68, 70, 73, 84,
96, 101, 108, 111, 113, 122, 72, 105, 109, 115, 145
159
STUNT BOX
AP, AR, AS, AW, AX, AY, ACV, ACW, ACX, ACY,
ACZ, ADL, AEH, AES, AET, AFD, AFE, AFN, AGD,
AGE, AFY, AGJ, AGG, AHF, AHH, AHT, AHV,
AHY, AHZ, AJG, AJA, AJC, AJD, AJF, AJG, AJB,
AJK
SEQUENTIAL
SELECTOR UNIT
LS 2, 4

APPROVALS
D AND R E OF M
H.J.K. [Signature]

E-NUMBER
PROD. NO. 3214 WD
DATE 12-1-56
P.D. FILE NO. 45-3065AA
DRAWN JER CHKD. GG.
ENGD. VC. APPD. OAL

TELETYPE CORPORATION
3214 WD