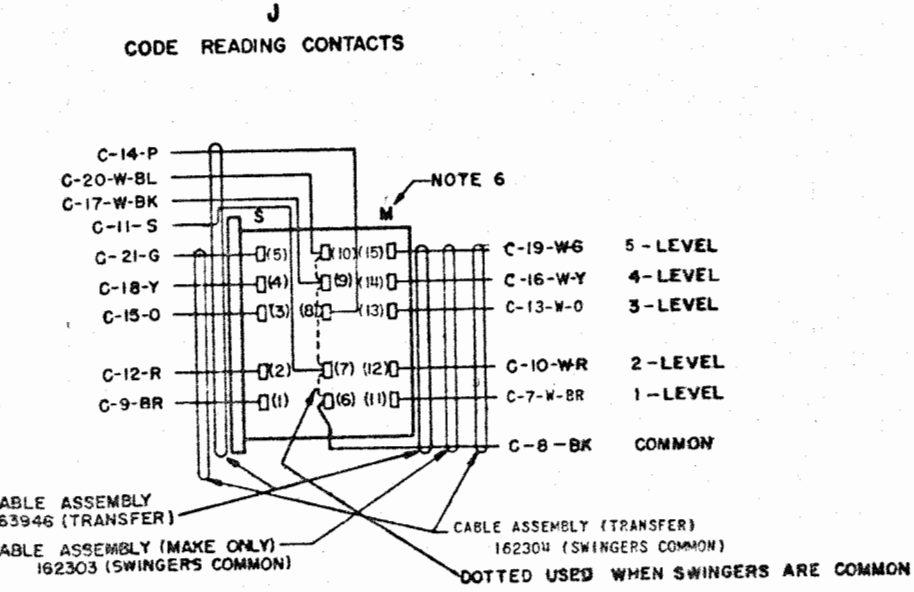
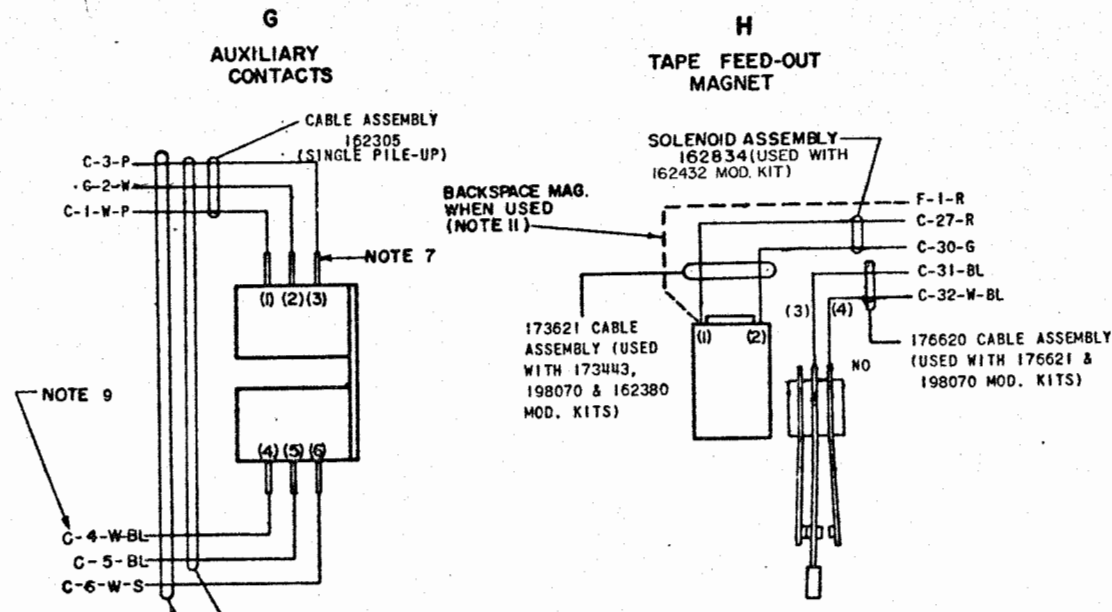
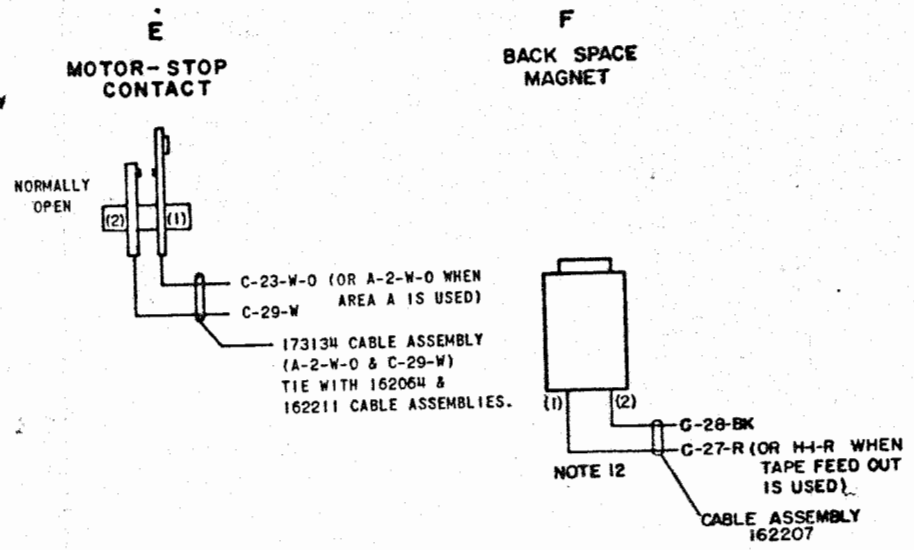
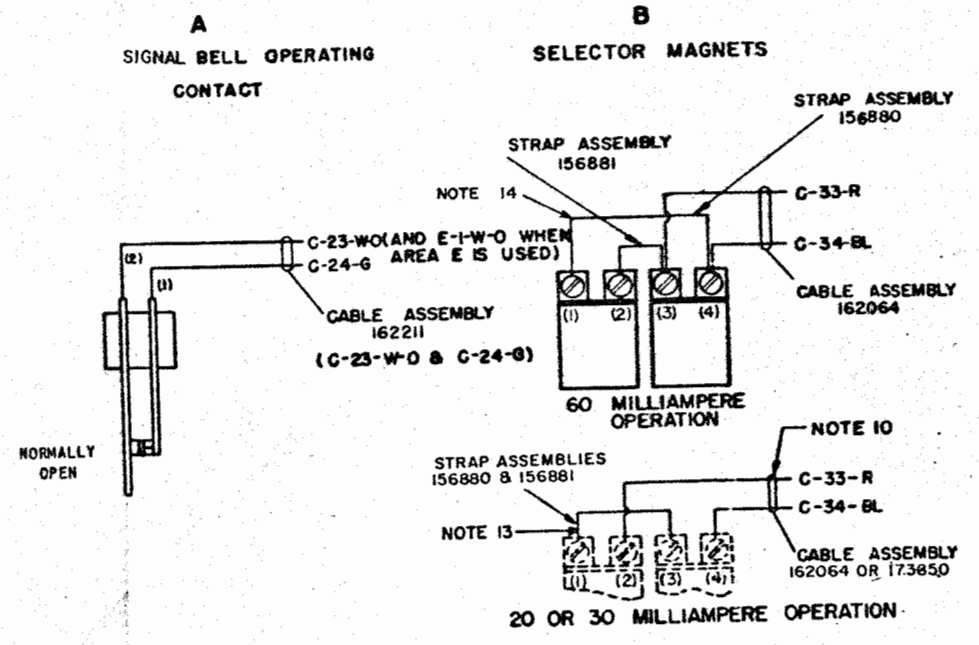


REVISIONS

ISSUE	DATE	AUTH. NO.
A-2	4-13-59	28-10974
B-3	5-20-59	28-11062-1
C-4	8-4-59	28-11499
5	4-6-60	28-12999
6	5-3-60	28-13251
7	9-7-60	28-13795
8	10-26-60	28-14088
9	12-19-60	28-14370
10	5-19-61	89691
11	5-19-61	69791
12	11-16-61	71633
13	7-10-62	74013
14	2-9-63	75940
15	2-9-63	75958
16	5-31-63	76926
17	12-30-63	79205
18	10-5-64	83406
19	3-31-65	86803
20	1-6-66	89856
21	5-9-66	90891
22	10-28-74	12367

- NO. NOTES
1. WIRING LEGEND:
  2. COLOR CODE:  
 BK - BLACK      G - GREEN  
 BR - BROWN     BL - BLUE  
 R - RED          P - PURPLE  
 O - ORANGE      S - SLATE  
 Y - YELLOW      W - WHITE
  3. TERMINAL DESIGNATIONS ENCLOSED IN PARENTHESES ARE FOR REFERENCE AND ARE NOT MARKED ON COMPONENTS.
  4. TERMINALS ON CONNECTOR SHOWN AS VIEWED FROM SOLDER END.
  5. NORMALLY OPEN (NO) AND NORMALLY CLOSED (NC) CONTACTS ARE SHOWN WHEN THE REPERFORATOR IS IN THE STOP (IDLE) POSITION.
  6. THE SPACING (S) SIDE ON THE CODE READING CONTACTS ARE NORMALLY CLOSED. THE MARKING (M) SIDE OF THE CODE READING CONTACTS ARE NORMALLY OPEN.
  7. WHEN THE AUXILIARY CONTACTS ARE OPERATED FROM A SINGLE CYCLE FUNCTION CAM, THE CONTACTS NEAREST THE MOUNTING BRACKET ARE NORMALLY CLOSED. WHEN THE AUXILIARY CONTACTS ARE OPERATED FROM A DOUBLE CYCLE FUNCTION CAM, THE CONTACTS FARTHEST FROM THE MOUNTING BRACKET ARE NORMALLY CLOSED.
  8. GENERAL NOTE: WIRING OF INDIVIDUAL COMPONENTS IS DETERMINED BY REFERRING TO THE CABLE ASSEMBLIES SPECIFIED ON THE UNIT B/M.
  9. WHEN USING THE 162306 CABLE ASSEMBLY WITH THE LRPE, CONNECT THE W-BL WIRE (NORMALLY CONNECTED TO G4) TO G6.
  - 10.
  11. WHEN COMMON CONNECTION IS USED, D.C. MUST BE PROVIDED FOR MAGNETS OTHER THAN 224M WHICH OPERATES ON A.C. OR D.C.
  12. FOR WIRING OF BACKSPACE MAGNET ON LAK KEYBOARD MOUNTED PERFORATORS, REFER TO ASSOCIATED LAK WIRING DIAGRAM.
  13. SELECTOR MAGNETS MUST BE STRAPPED FOR 60 MILLIAMPERE OPERATION WHEN 179615 AND 179616 R.F. SUPPRESSION MODIFICATION KITS ARE USED WITH REPERFORATOR SET.
  14. ON UNITS EQUIPPED WITH THE 173850 SHIELDED CABLE, THE STRAP BETWEEN TERMINALS C-35 AND C-36 IS OMITTED AND THE "G" WIRE OF THE CABLE IS CONNECTED TO TERMINAL C-35. IF THE UNIT EQUIPPED WITH THE 173850 SHIELDED CABLE IS USED ON A BASE NOT CONTAINING PROVISIONS FOR R.F. SUPPRESSION (INCLUDING BELL SYSTEM) REMOVE THE "G" WIRE FROM TERMINAL C-35 AND ADD STRAP BETWEEN TERMINALS C-35 AND C-36.
  14. THE LPR 66 SELECTOR MAGNET ASSEMBLY SHALL BE STRAPPED IN PARALLEL FOR 500 MA OPERATION



WDP

ACTUAL WIRING DIAGRAM FOR TYPING AND NON-TYPING REPERFORATOR LPR LPE LRPE

APPROVALS

D AND R \_\_\_\_\_ E OF M \_\_\_\_\_

E-NUMBER \_\_\_\_\_  
 PROD. NO. 3628WD  
 DATE 11-17-58  
 P.D. FILE NO. 14-49.65AA  
 DRAWN R.B.B. CHKD. \_\_\_\_\_  
 ENGD. D.C.L. APPD. \_\_\_\_\_

TELETYPE CORPORATION