

1. WIRING AS SHOWN FOR RELAY OPERATION ON NEUTRAL LINE SIGNALS. FOR OPERATION ON POLAR SIGNALS REMOVE "BK" WIRE FROM TERMINAL 34 AND TAPE, MOVE "Y" WIRE FROM TERMINAL 31 TO 34, MOVE "BR" WIRE FROM 33 TO 31, AND MOVE "BK" STRAP FROM RELAY TERM. 3 TO RELAY TERMINAL 2. FOR OPERATION WITHOUT RELAY REMOVE AND TAPE "Y" WIRE FROM TERMINAL 31 AND "G" WIRE FROM TERMINAL 32. MOVE "W" WIRE FROM TERMINAL 35 TO 31, AND "O" WIRE FROM TERMINAL 36 TO 32.

2. FOR .020 AMP. SIGNAL LINE OPERATION, CONNECT THIS LEAD TO OTHER TERMINAL OF RESISTOR.

3. EQUIPMENT SHOWN DOTTED IS UNDERNEATH BASE.

4. RECOMMENDED FUSETRON OR FUSESTAT (AND ALTERNATE FUSE) PROTECTION (CONNECTED IN EXTERNAL POWER LINE):-

MOTOR	FUSETRON OR FUSTAT	FUSE
110 V. A.C. 60 CYCLE SYN.	3.2 AMP.	6 AMP.
110 V. A.C. 60 CYCLE GOV.	1.60 AMP.	3 AMP.
110 V. D.C. GOV.	.8 AMP.	3 AMP.
110 V. A.C. 25 CYCLE GOV.	1.4 AMP.	3 AMP.

5. WHEN A.C. SERIES MOTOR IS TO BE DRIVEN FROM 25 CYCLE POWER SUPPLY, A 25 OHM RESISTOR SHOULD BE CONNECTED IN THE POWER LEADS.

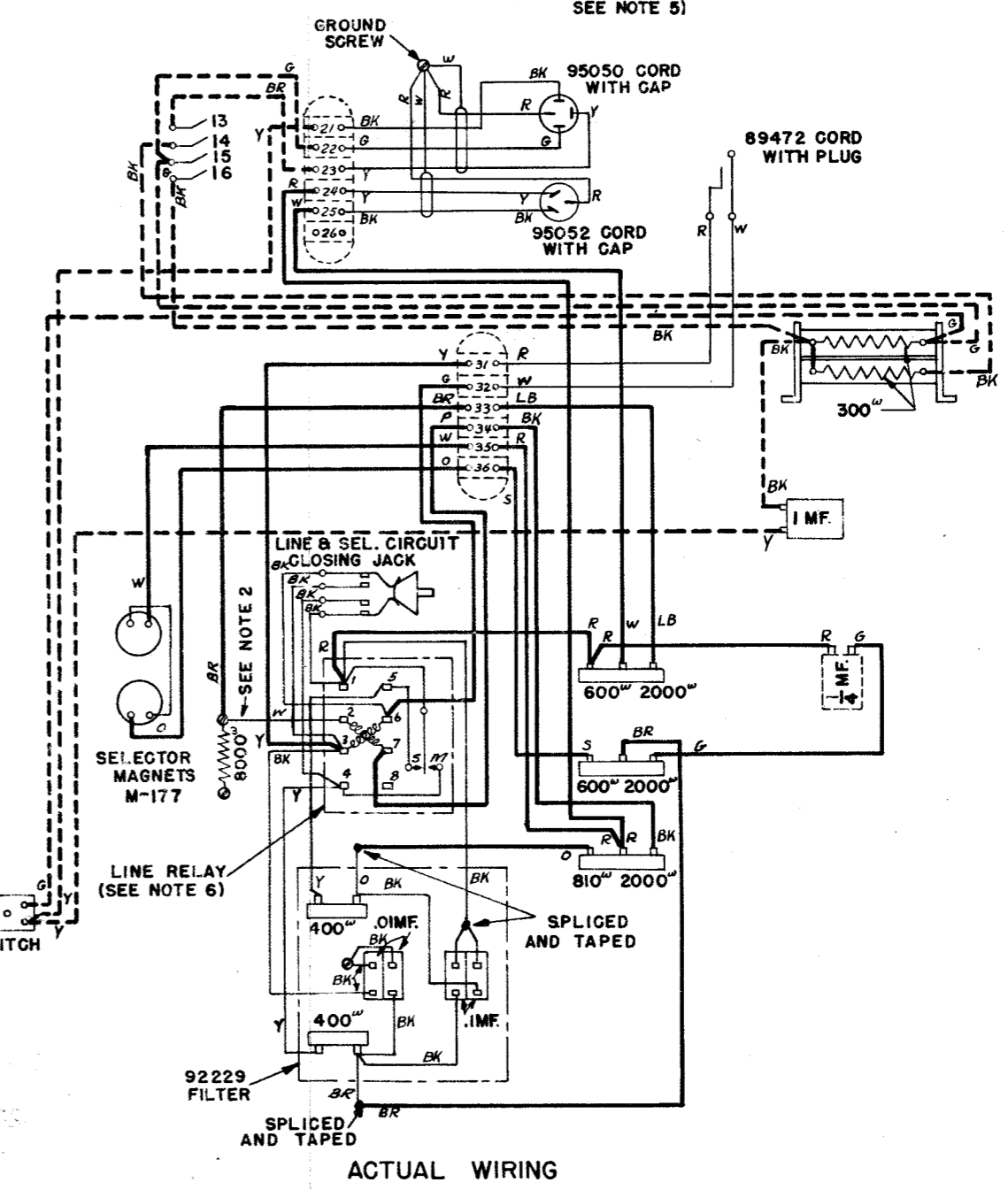
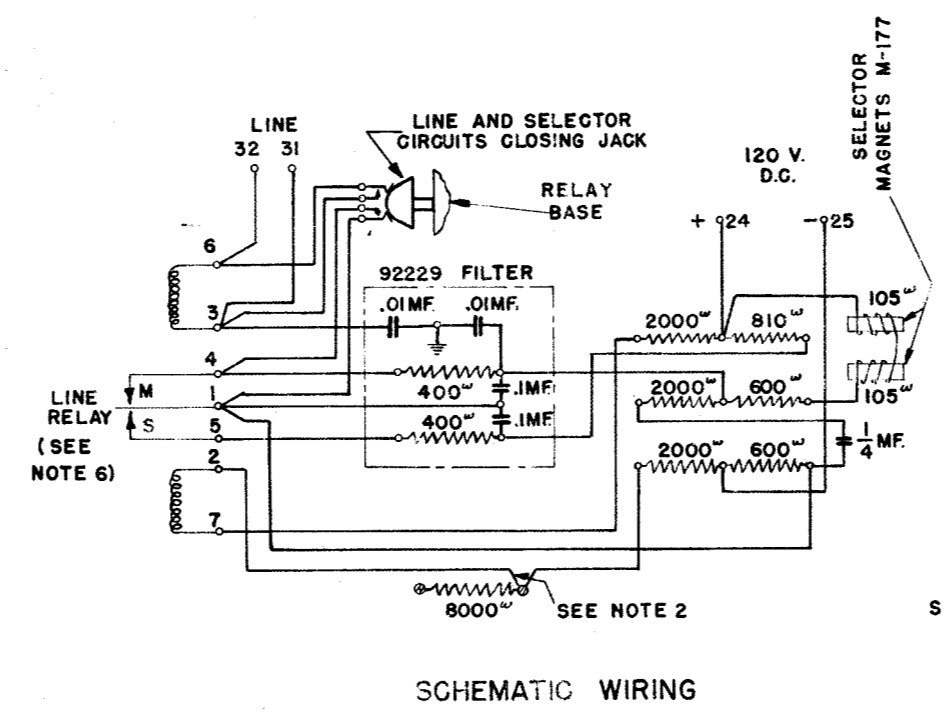
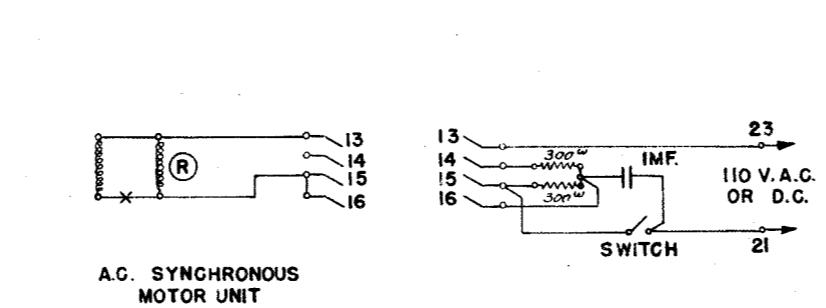
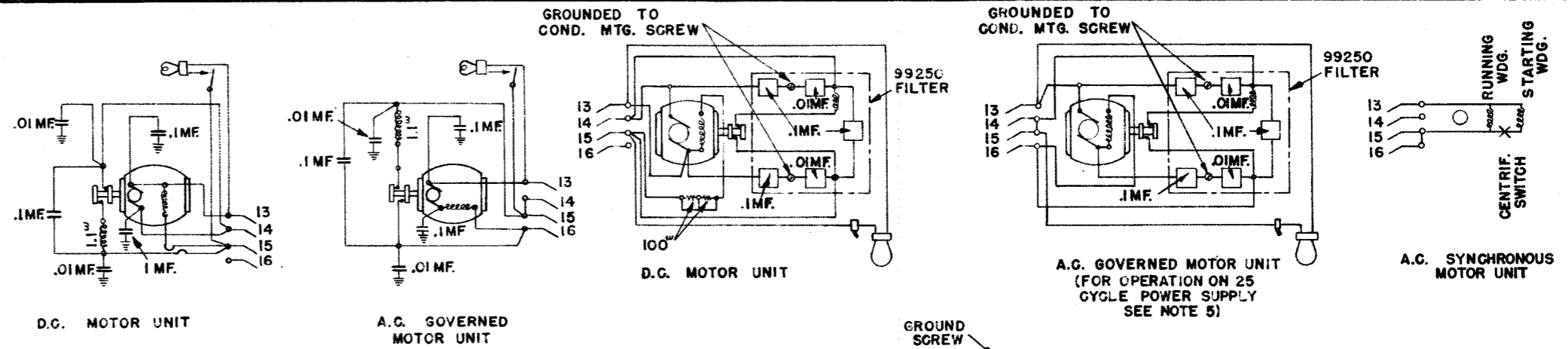
6. RY-28 RELAY (W.E. 215-H) 85 OHMS PER WINDING (FOR .060 AMPERE LINE)
 RY-30 RELAY (W.E. 255-A) 136 OHMS PER WINDING (FOR .060 OR .020 AMPERE LINE)

7. COLOR CODE: W - WHITE Y - YELLOW S - SLATE BK - BLACK
 R - RED O - ORANGE BR - BROWN LB - LIGHT BLUE
 G - GREEN P - PURPLE

8. THIN LINES INDICATE WIRES NOT IN CABLE.

9. ~~ALL WIRES ARE NO. 18 DELTASTON COTTON COVERED FIXTURE WIRE, EXCEPT MOTOR AND FILTER LEADS.~~

10. ASSOCIATED CABLES: 86181 POWER --- 74571 D.G. MOTOR UNIT
 86182 LINE --- 74788 A.C. GOV. MOTOR UNIT



REVISIONS
 (2) WIRES TO LINE & SEL. CIRCUIT CLOSING JACK WERE COLOR CODED DIFFERENTLY 7-1-42 G.J.K.
 (3) TITLE CHANGED FROM RPE 25 TO 26 5-13-43 J.J.F.

RTTY ELECTRONICS
 TELETYPE=Sales-Service-Parts
 PO Box 20101 El Sobrante, Ca.
 94820. (510)222-3102
 mr_rtty@pacbell.net

TELETYPE CORPORATION
 WD-2075-C
 WIRING DIAGRAM
 MODEL 14 REPERFORATOR
 RPE-26
 DRAWN SLD
 TRACED
 CHECKED H.A.W.
 ENG'R'D H.A.W.
 APPROVED E.S. Larson