

**NO. NOTES**

BASE WIRING AS SHOWN IS FOR DIRECT SELECTOR MAGNET OPERATION WITHOUT LINE RELAY OR LINE RELAY FILTER.  
 WIRING CHANGES REQUIRED FOR OPERATION WITH LINE RELAY AND OTHER CONDITIONS ARE SHOWN IN THE FOLLOWING TABLE.  
 SUFFICIENT RESISTANCE MUST BE PROVIDED IN THE LINE CIRCUIT TO REDUCE THE LINE CURRENT TO THE PROPER VALUE. TYPING UNITS WITHOUT SERIES-PARALLEL SWITCH CANNOT BE USED ON .020 AMP LINE RELAY.

WIRING REQUIREMENTS		
LINE CURRENT	TYPING UNITS	BASE
.060 AMP.	SERIES-PARALLEL SWITCH IN "PARALLEL" POSITION	WITHOUT LINE RELAY IN CIRCUIT, WIRING AS SHOWN.
		WITH LINE RELAY & LINE RELAY FILTER IN CIRCUIT, WIRE AS SHOWN EXCEPT: REMOVE YELLOW WIRE FROM TERMINAL 29 & CONNECT TO TERMINAL "C" REMOVE BLACK WIRE FROM TERMINAL 28 & CONNECT TO TERMINAL 29 REMOVE ORANGE WIRE FROM TERMINAL 28 & CONNECT TO TERMINAL "A"
.020 AMP.	SERIES-PARALLEL SWITCH IN "PARALLEL" POSITION	WITH LINE RELAY & LINE RELAY FILTER IN CIRCUIT, WIRE AS SHOWN EXCEPT: REMOVE WHITE WIRE ON 800Ω RESISTOR FROM END SHOWN & CONNECT TO OPPOSITE END. REMOVE YELLOW WIRE FROM TERMINAL 29 & CONNECT TO TERMINAL "C" REMOVE BLACK WIRE FROM TERM. 28 & CONNECT TO TERM. 29. REMOVE ORANGE WIRE FROM TERM. 28 & CONNECT TO TERM. "A"
		WITHOUT LINE RELAY IN CIRCUIT, WIRING AS SHOWN.
SWITCH IN SERIES POSITION		

**WIRE COLOR CODE & SYMBOLS**

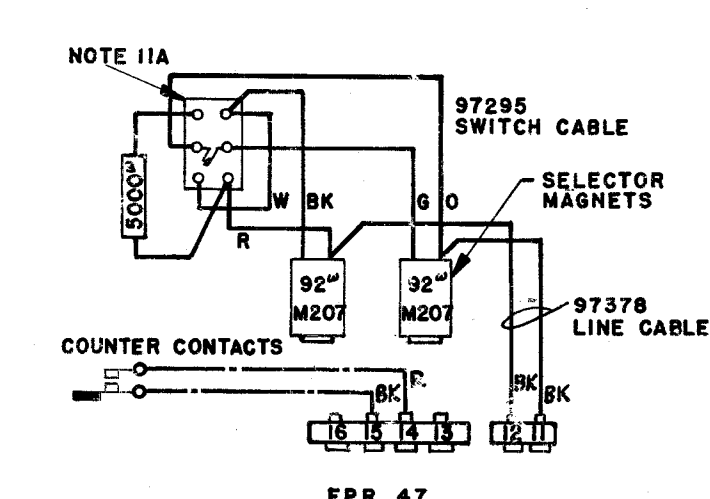
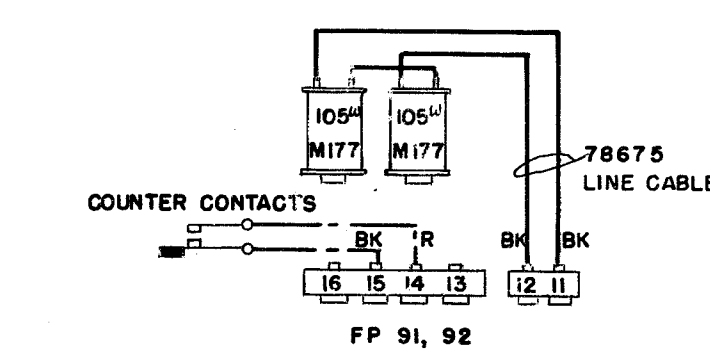
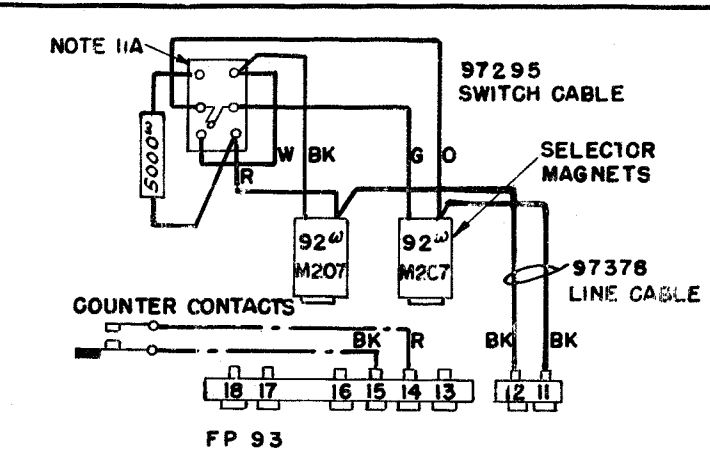
CODE	SC D COLOR OR TRACER IN WHITE WIRE	CODE	SOLID COLOR OR TRACER IN WHITE WIRE
Y	YELLOW	O	ORANGE
G	GREEN	S	SLATE
BR	BROWN	R	RED
W	PURPLE (RED & BLUE TRACERS)	BK	BLACK
X	WHITE	BL	BLUE

X INDICATES WIRE TAPED OR SPLICED AND TAPED.  
 F INDICATES WIRING TO BE USED WHEN RADIO INTERFERENCE SUPPRESSION FILTERS ARE SUPPLIED.  
 N INDICATES WIRING TO BE USED WHEN RADIO INTERFERENCE SUPPRESSION FILTERS ARE NOT SUPPLIED.

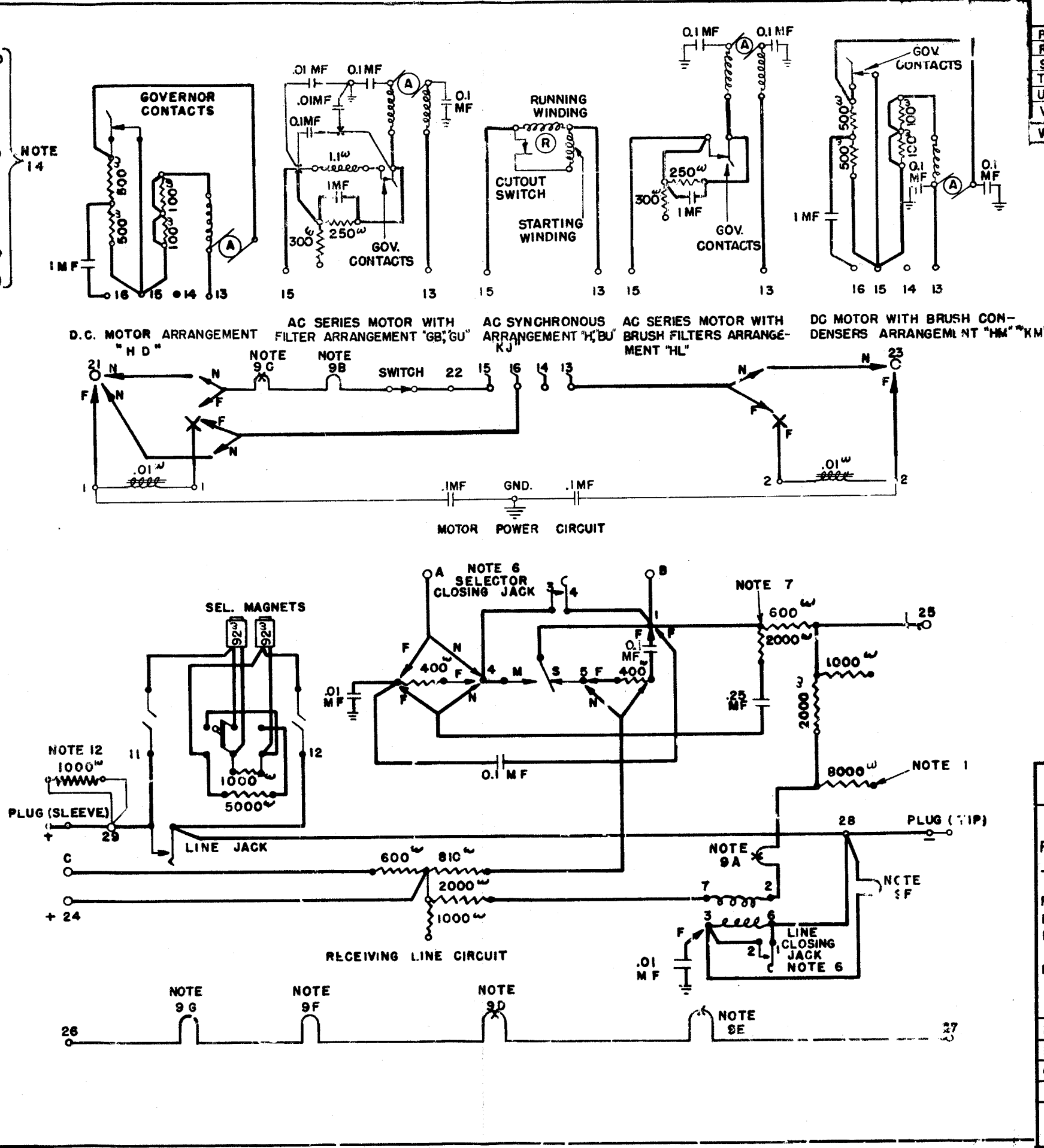
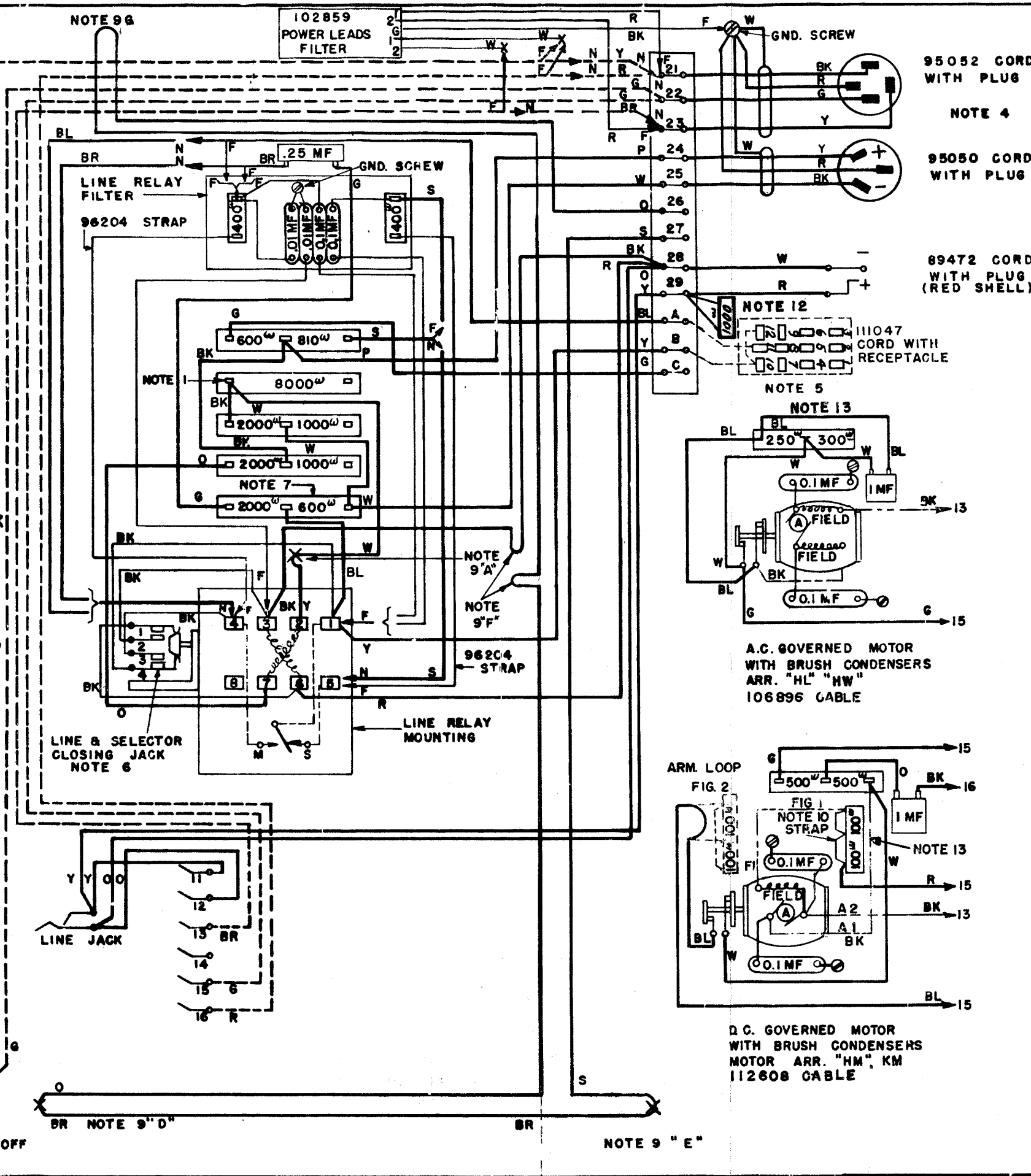
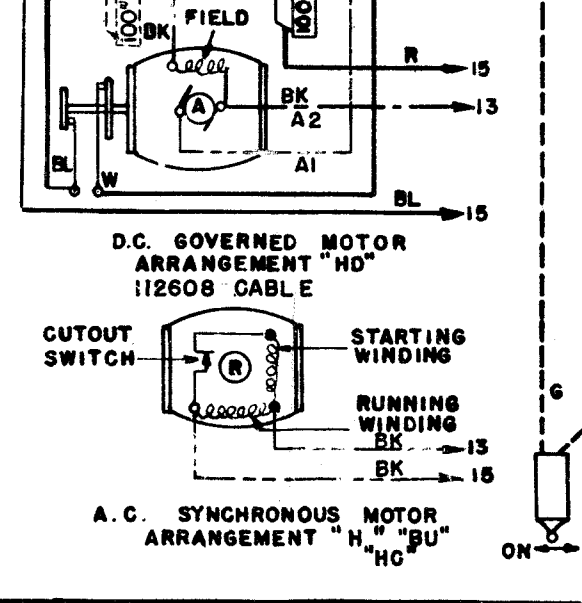
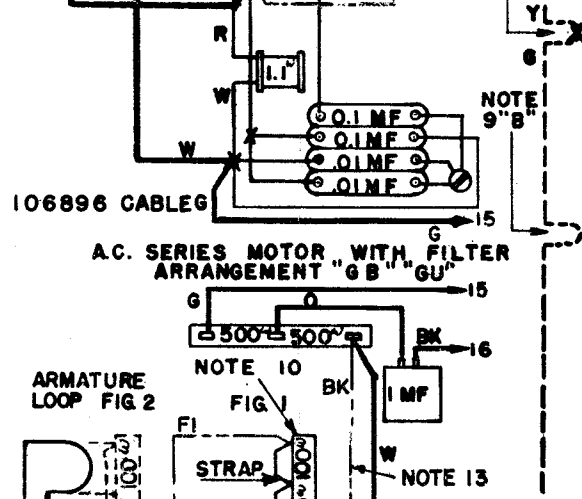
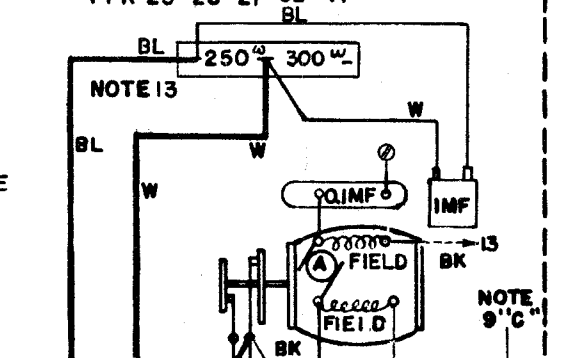
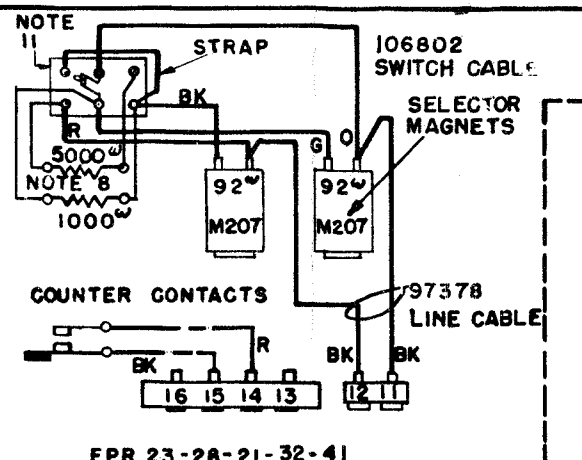
**ASSOCIATED CABLES**

111336	BASE (LINE)
111338	PRINTER (LINE)
111338	BASE (POWER)
103523	MOTOR LEADS
103523	PRINTER (COUNTER CONTACTS)
103523	PRINTER (SELECTOR SWITCH)
103523	FILTER WIRING & TYPING UNIT RESISTOR LEADS

- PLUGS AND RECEPTABLES SHOWN AS VIEWED FROM PRONG OR SLOT END.
- 111047 CORD WITH RECEPTACLE NOT PART OF BASE, FURNISHED ONLY WHEN REQUIRED AND ORDERED SEPARATELY.
- LINE AND SELECTOR CIRCUIT CLOSING JACKS CLOSE WHEN RELAY IS REMOVED.
- WHEN FILTER IS NOT SUPPLIED, THIS RESISTOR IS 2000Ω/1000Ω INSTEAD OF 2000Ω/600Ω
- USE RM 60019 TUBING ON SWITCH RESISTOR LEADS. UNNUMBERED STRAPS ARE RM 39522 WIRE AND RM 60019 TUBING.
- "A" = POLAR-NEUTRAL SWITCH LOOP. "B" = UPPER CASE H LOOP. "C" = MOTOR CONTROL RELAY LOOP. "D" = BREAK KEY LOOP. "E" = TRANSMITTING CONTACTS LOOP. "F" = LINE TEST KEY LOOPS. "G" = RESISTANCE LOOP.
- IF MOTOR FAILS TO REACH DESIRED SPEED WITH GOVERNOR ADJUSTED, INSERT 50Ω/100Ω OR 200Ω IN FIELD LOOP. IF VOLTAGE IS EXCESSIVE, INSERT 50Ω IN ARMATURE CIRCUIT BY SUBSTITUTING ARMATURE LOOP FOR FIELD LOOP. FIG. 1 & FIG. 2
- SERIES-PARALLEL SWITCH - RIGHT, SERIES-LEFT, PARALLEL.  
 A - SERIES-PARALLEL SWITCH - UP, SERIES - DOWN, PARALLEL
- IF THE TYPING UNIT OR REPERFORATOR IS NOT ALREADY EQUIPPED WITH A 1000 OHM RESISTOR CONNECT THE 1000 OHM RESISTOR ON BASE TO TERMINALS 28 & 29 WHEN IT IS NECESSARY TO REDUCE THE NEGATIVE INTERNAL BIAS OF HOLDING MAGNET TYPE PRINTERS WITH SELECTOR COILS CONNECTED IN PARALLEL & WIRING OF BASE IS AS SHOWN. IF BASE WIRING HAS BEEN CHANGED, AS IN NOTE 1, CONNECT RESISTOR LEADS TO TERMINALS "A" & "C"



**RTTY ELECTRONICS**  
 TELETYPE=Sales-Service-Parts  
 PO Box 20101 El Sobrante, Ca.  
 94820. (510)222-3102  
 mr\_rtty@pacbell.net



**REVISIONS**

P	11-4-48	45864
R	2-8-50	49012
S	5-10-50	49547
T	7-12-50	49822
U	7-14-50	49870
V	9-21-50	50133
W	12-15-50	50470

WD-2332W  
 DATE: 11-6-44  
**WIRING DIAGRAM**  
 MODEL 14  
 RECEIVING ONLY BASE  
 TYPING UNIT  
 REPERFORATOR  
 PB 46, 47, 48, 215  
 FP 91, 92, 93  
 FPR 21, 23, 28, 32, 41, 47  
 MOTOR ARR. H, HD, HL, HW,  
 GB, GU, BU, HM, HO, KJ, KM  
 DRAWN: GAR  
 BNG'R'D:  
 CHECKED:  
 FILE: 13-49.7AA  
**TELETYPE CORPORATION**