

SHEET INDEX

CONTENTS	SHEET NO.	ISSUE NO.																									SHEET NO.
		1	2	3	4	5	6	7	8	9	10	11	12	13	14	15	16	17	18	19	20	21	22	23	24	25	
SHEET INDEX	1										10	11															1
SYNCHRONOUS MOTOR UNITS	2										45	46															2
SERIES GOVERNED MOTOR UNITS	3										46	47															3

SUPPORTING INFORMATION	
CATEGORY	NO.

USE OF SHEET INDEX

WHEN CHANGES ARE MADE IN THIS DRAWING:

- ONLY CHANGED SHEETS WILL BE REISSUED. (INCLUDING SHEET 1)
- UNCHANGED SHEETS RETAIN EXISTING ISSUE NUMBER.

THE LAST COMPLETED COLUMN ON THE SHEET INDEX INDICATES THE LATEST ISSUE PER SHEET.

REVISIONS		
ISSUE	DATE	AUTH. NO.
10	4-10-70	352RC
11	6-23-77	18672RC

A

B

C

D

E

ACTUAL
WIRING DIAGRAM
FOR
MODEL 28
MODEL 35
MOTOR UNITS

APPROVALS		
PROJ. SUPV.	PROJ. DIR.	MFG. REL. COMPL.
ENGR. DRN.	DSGNR. DATE 6-8-77	
R & D FILE 1-30-65 156A		
S-NUMBER		

RTTY ELECTRONICS
TELETYPE=Sales-Service-Parts
PO Box 20101 El Sobrante, Ca,
94820. (510)222-3102
mr_rtty@pacbell.net



2900WD(1)

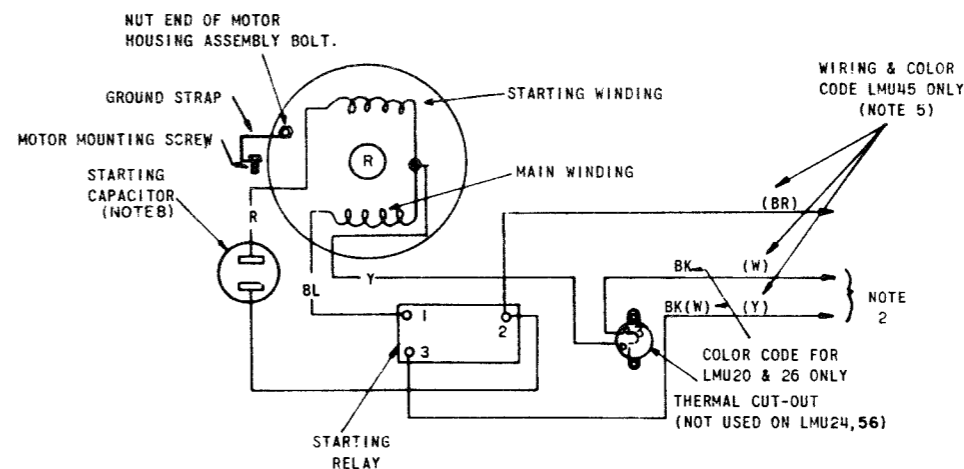
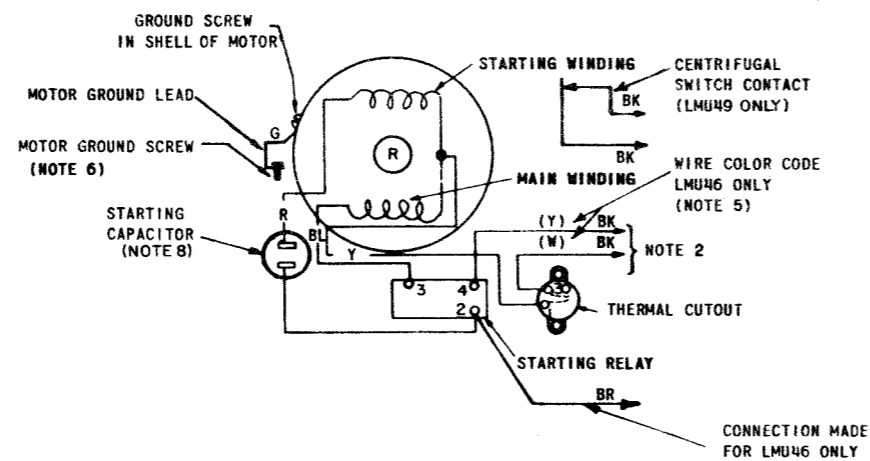
SYNCHRONOUS MOTOR UNITS

2900WD(2)

REVISIONS

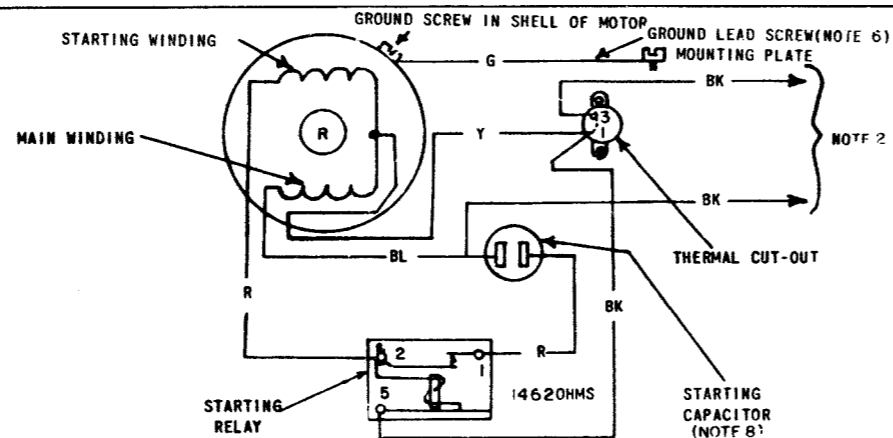
ISSUE	DATE	AUTH. NO.
45	8-15-69	99487
46		

NO.	NOTES														
1.	SYNCHRONOUS MOTOR OPERATES ON REGULATED FREQUENCY ($\pm 0.75\%$) MAXIMUM AC ONLY.														
2.	CONNECT EITHER WIRE TO DESIGNATED TERMINALS OF UNIT TERMINAL BLOCK, PER WIRING DIAGRAM OF ASSOCIATED UNIT														
3.	MOTOR LEADS OF SAME COLOR ARE INTER-CHANGEABLE.														
5.	EXTERNAL NOISE SUPPRESSION NETWORK CONSISTING OF 100 OHM, 1/2 WATT RESISTOR IN SERIES WITH 0.25 MFD 1K V CAPACITOR CONNECTED ACROSS YELLOW AND BROWN WIRES. (FOR LMU45,46)														
6.	MOTOR GROUND LEAD (GREEN) TERMINAL MUST BE FASTENED TO MOUNTING CRADLE OF MOTOR UNDER A SEPARATE GROUND SCREW ONLY. A SCREW USED FOR ANOTHER PURPOSE CANNOT BE USED FOR GROUNDING (UNDERWRITERS LABORATORIES REQUIREMENT).														
7.	WIRE COLOR CODE: BK - BLACK BL - BLUE BR - BROWN P - PURPLE W - WHITE R - RED O - ORANGE Y - YELLOW S - SLATE G - GREEN														
8.	<table border="1"> <thead> <tr> <th>LMU</th> <th>STARTING CAPACITOR VALUE</th> </tr> </thead> <tbody> <tr> <td>3,15,21,30,33,36,37,38,42,46,49,51,52</td> <td>43-48 MFD</td> </tr> <tr> <td>11,12</td> <td>170-226 MFD</td> </tr> <tr> <td>35</td> <td>64-77 MFD</td> </tr> <tr> <td>55</td> <td>15-18 MFD</td> </tr> <tr> <td>19,20,24,26,31,45,56</td> <td>88-108 MFD</td> </tr> <tr> <td>50,</td> <td>161-193 MFD</td> </tr> </tbody> </table>	LMU	STARTING CAPACITOR VALUE	3,15,21,30,33,36,37,38,42,46,49,51,52	43-48 MFD	11,12	170-226 MFD	35	64-77 MFD	55	15-18 MFD	19,20,24,26,31,45,56	88-108 MFD	50,	161-193 MFD
LMU	STARTING CAPACITOR VALUE														
3,15,21,30,33,36,37,38,42,46,49,51,52	43-48 MFD														
11,12	170-226 MFD														
35	64-77 MFD														
55	15-18 MFD														
19,20,24,26,31,45,56	88-108 MFD														
50,	161-193 MFD														



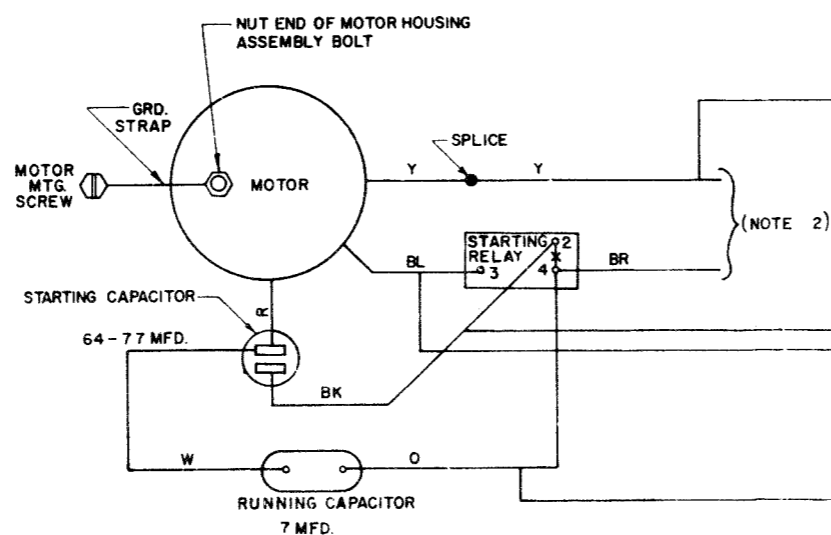
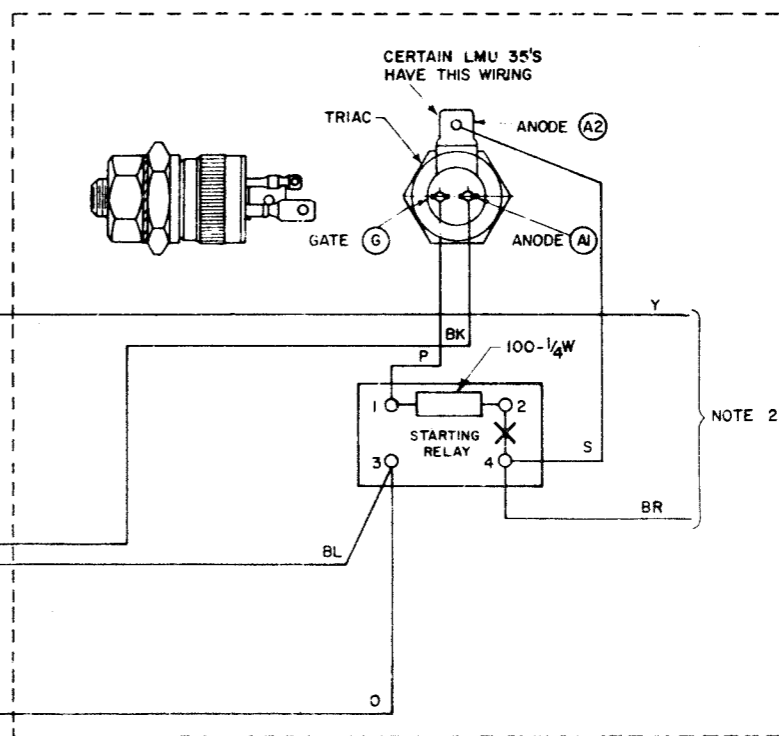
LMU 3,11,12,15,21,30,37,42,46,49
 FOR USE WITH 115V.A.C. 60~POWER SUPPLY
LMU 33, 36,38, 51,52
 FOR 115V.A.C. 50~POWER SUPPLY.
LMU 55
 FOR 230 V.A.C. 50~POWER SUPPLY

LMU 19,20,24,26,31,45,56
 FOR USE WITH 115V AC 60~POWER SUPPLY ONLY



LMU 50,
 FOR USE WITH 115V AC 50~POWER SUPPLY ONLY

LMU 35



ACTUAL WIRING DIAGRAM FOR MODEL 28 & 36 MOTOR UNITS

APPROVALS
 D AND R
 E OF M

E-NUMBER
 PROB. NO. 2900WD

DATE 1-28-65

P.D. FILE NO. 1-30-65-136A

DRAWN S.R. CHKD R.S.J.

ENGR. B.W.S. APPD.

TELETYPE CORPORATION

2900WD(2)

