

5716WD		
REVISIONS		
ISSUE	DATE	AUTH. NO.
2	4-18-66	90307

NO.	NOTES.
1.	REFER TO 5717WD FOR ACTUAL WIRING DIAGRAM.
2.	— INDICATES TERMINAL ON THE PROGRAM BOARD CONNECTOR.
3.	CONNECTIONS BETWEEN ADJACENT TERMINALS ARE MADE BY USING 193220 STRAP. (96 PL'S.)
4.	PART OF 193219 PROGRAM BOARD.

SCHEMATIC WIRING DIAGRAM FOR PROGRAMMER ASSEMBLY

ASSEM. NO. 193030

APPROVALS

D AND R E OF M

E NUMBER

PROD. NO. 5716 WD

DATE: 9-14-63

P.D. FILE NO. 33-A25AA

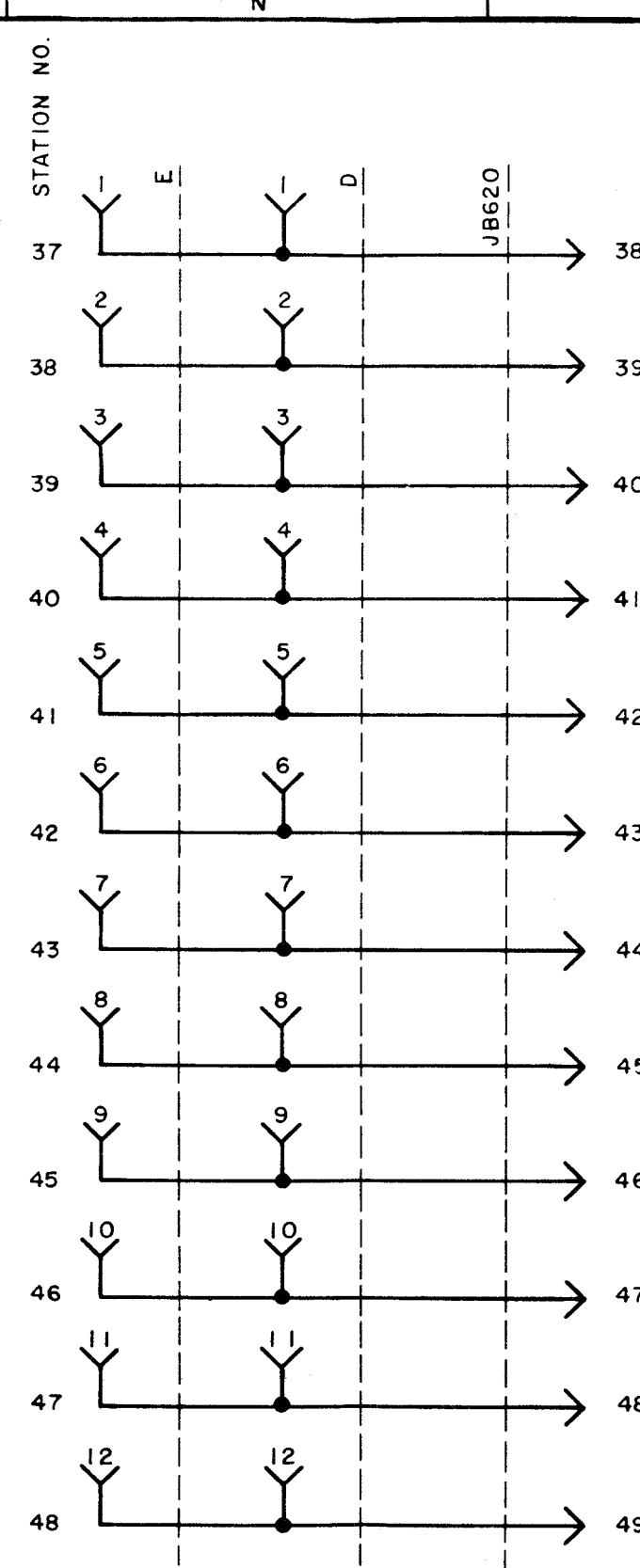
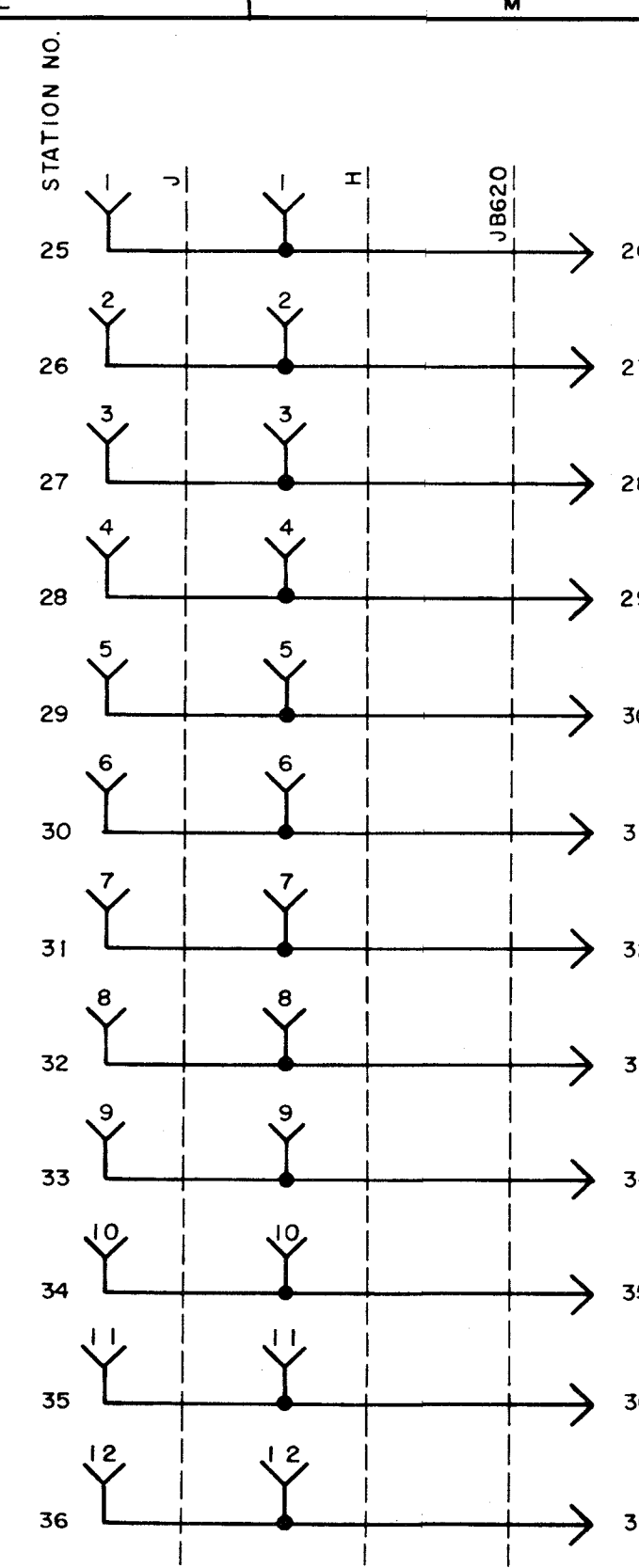
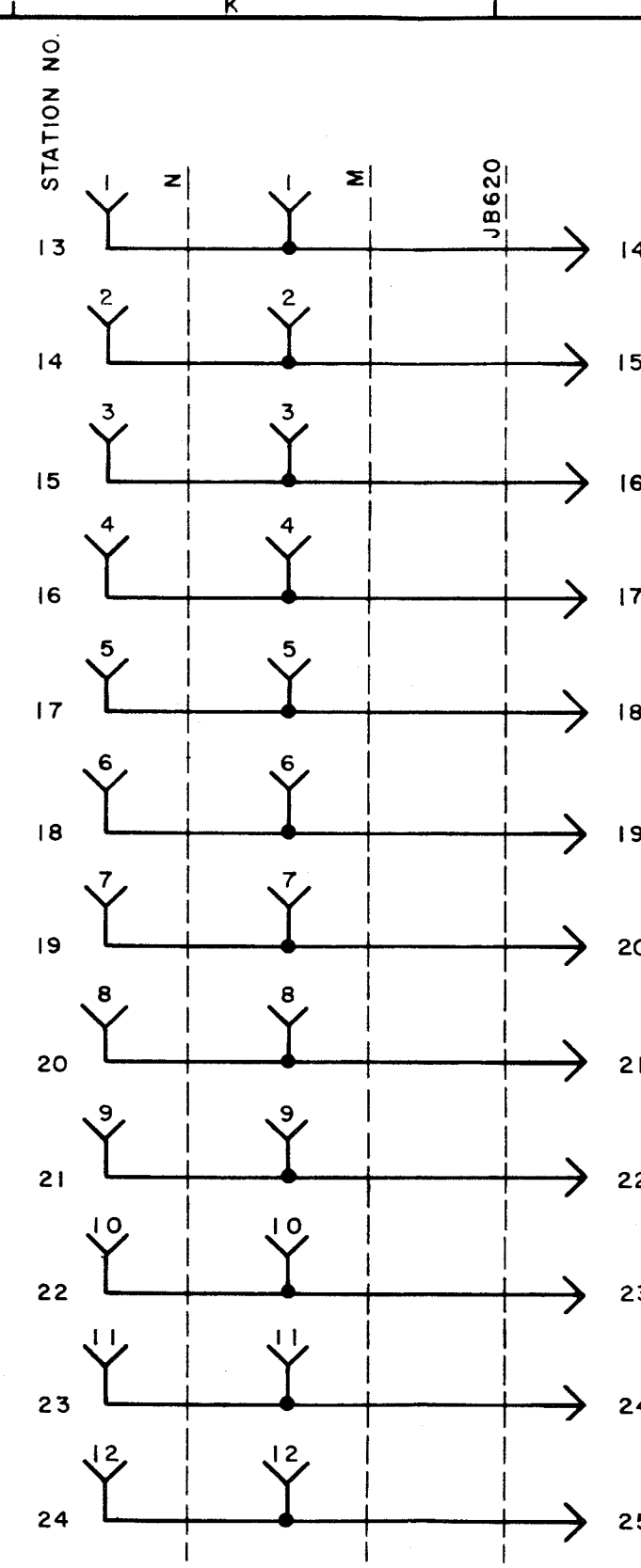
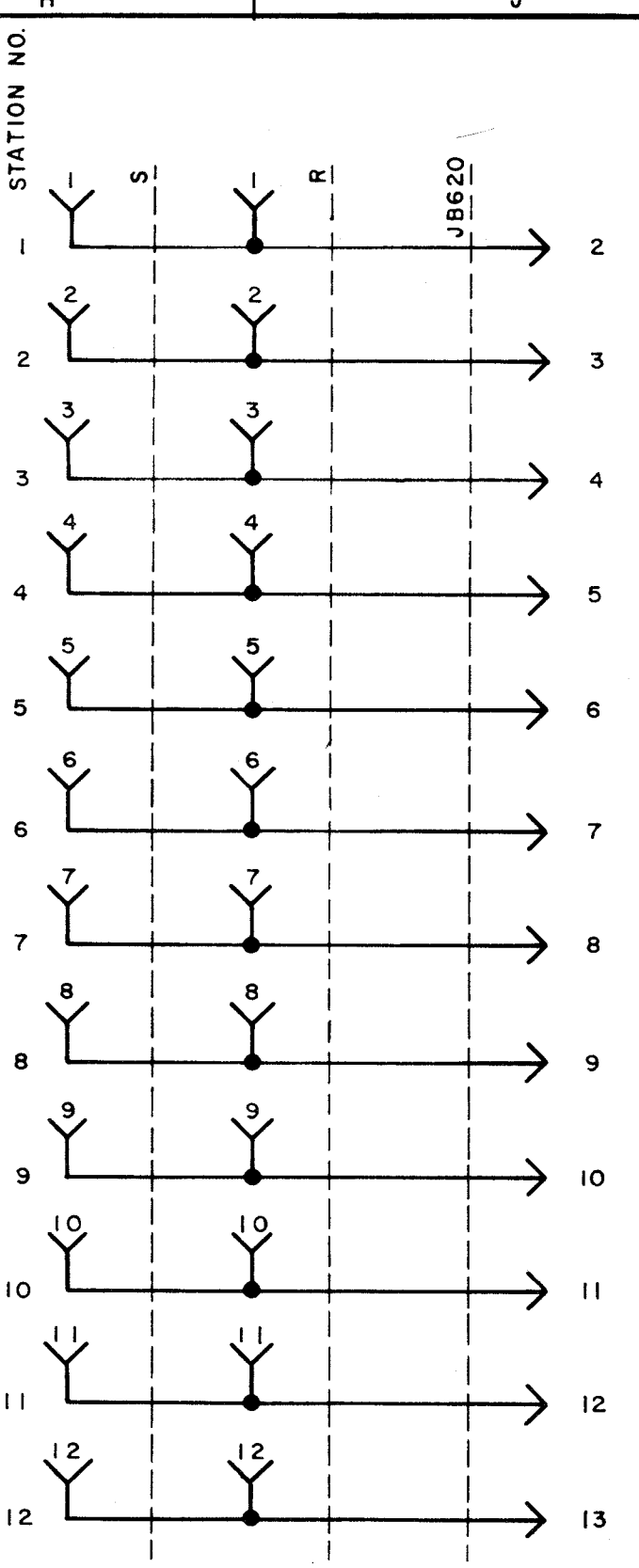
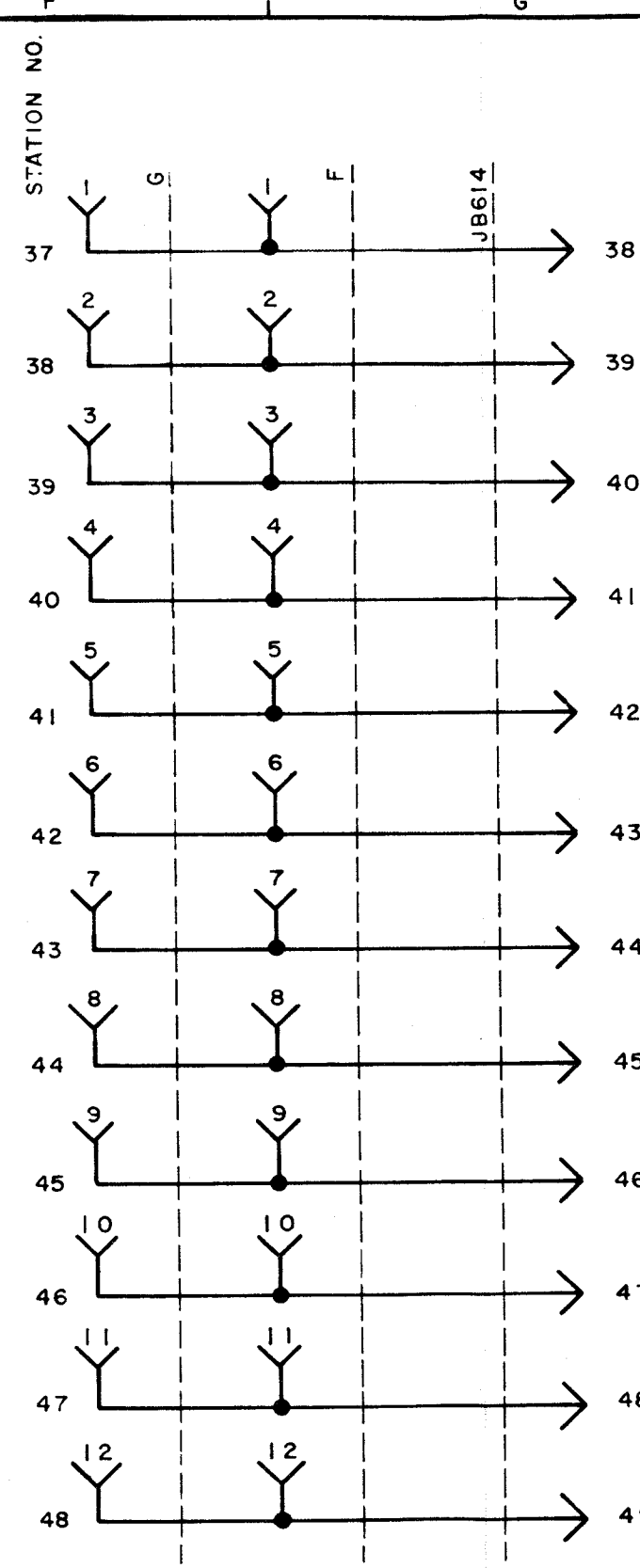
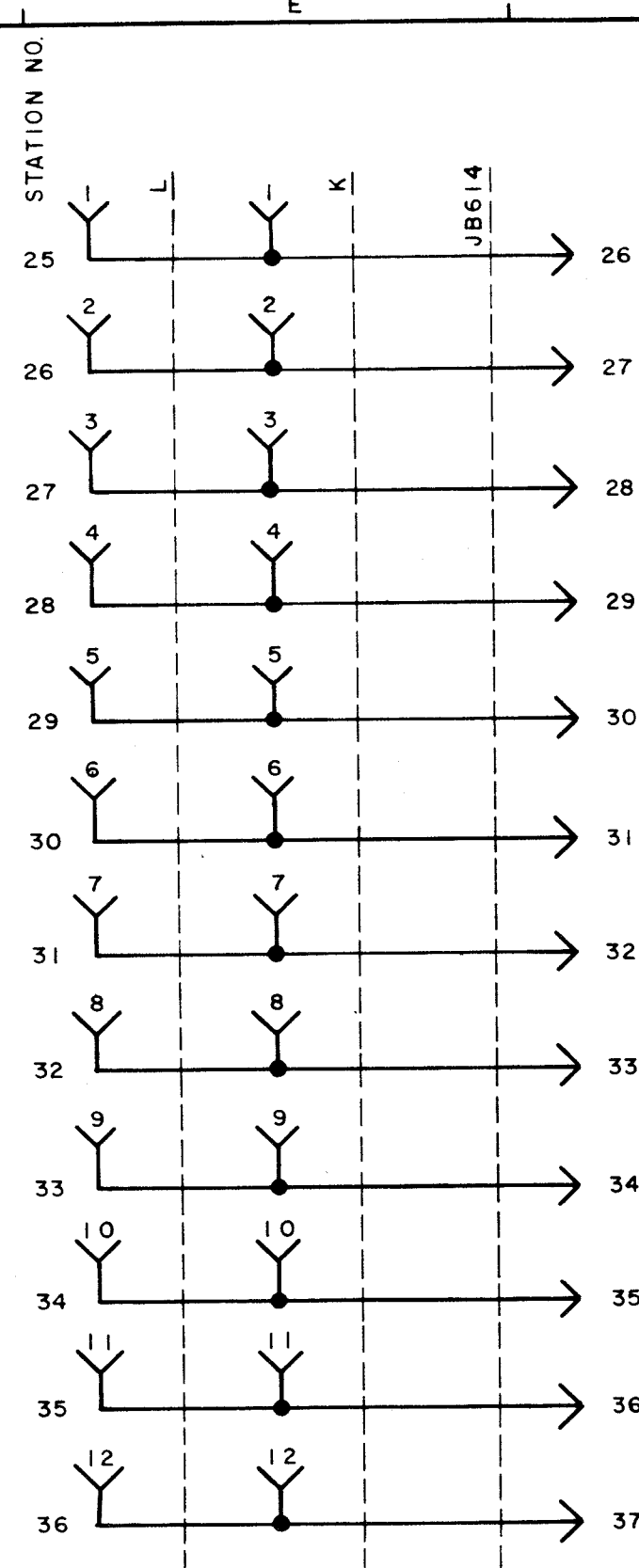
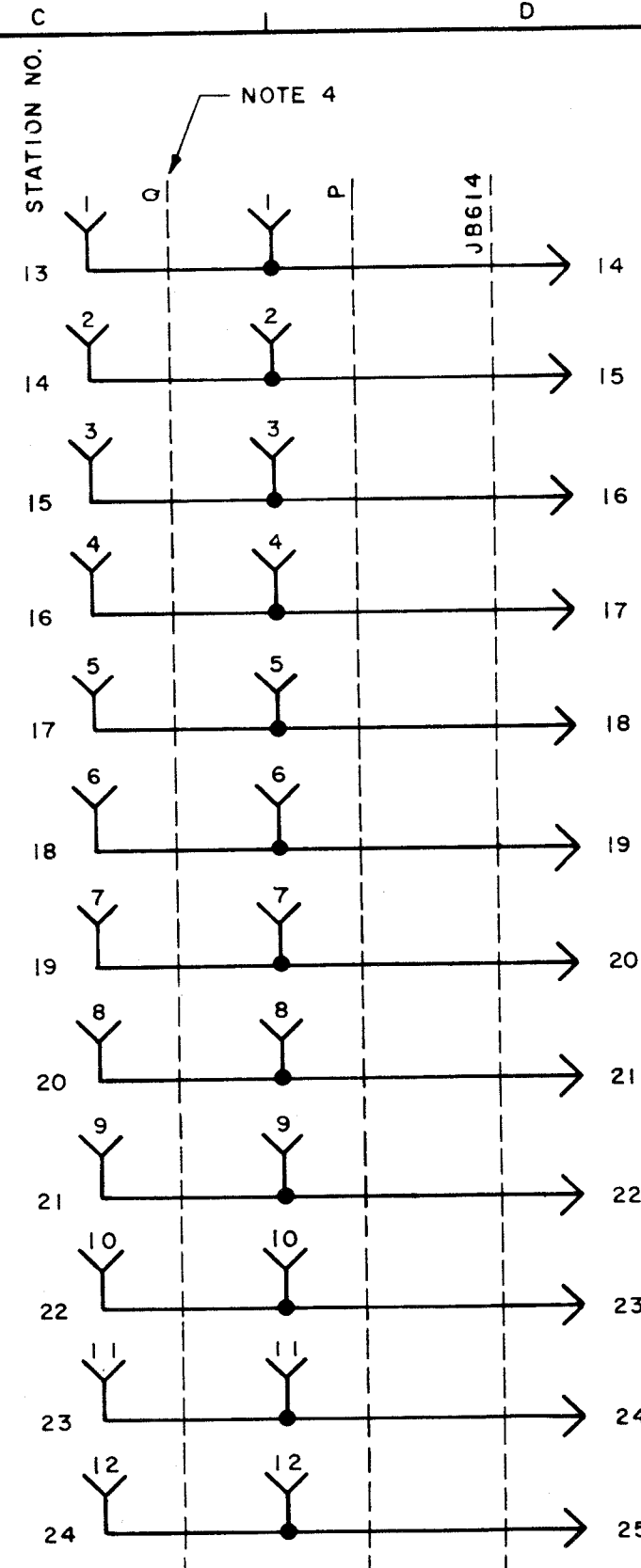
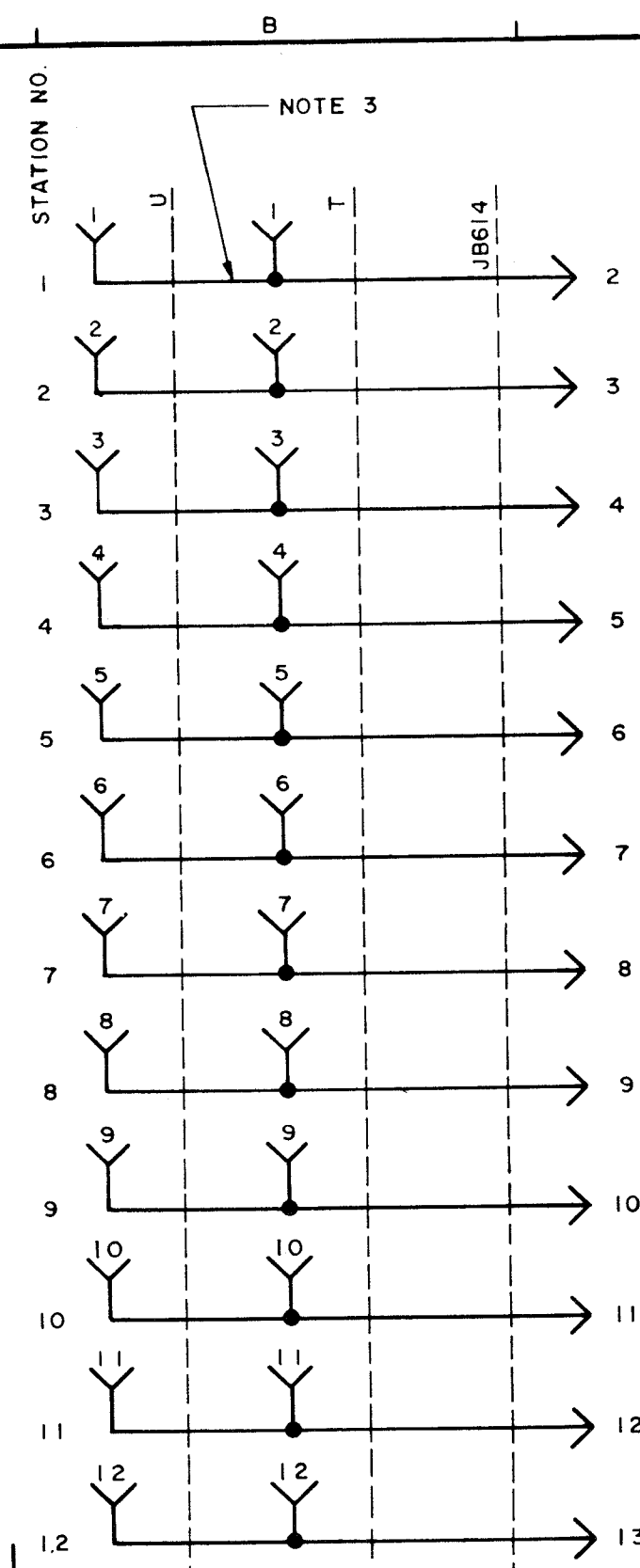
DRAWN H.D.S. CHKD. [Signature]

ENGD. S.P. APPD. [Signature]

TELETYPE CORPORATION

5716 WD

RTTY ELECTRONICS  
 TELETYPE=Sales-Service-Parts  
 PO Box 20101 El Sobrante, Ca.  
 94820. (510)222-3102  
 mr\_rtty@pacbell.net



1<sup>ST</sup> CHARACTER

2<sup>ND</sup> CHARACTER