

5756 WD			
REVISIONS			
ISSUE	DATE	AUTH. NO.	
1	4-7-64	79849	
2	7-6-64	82102	
3	8-31-64	82490	
4	5-20-65	87295	
5	12-22-65	89444	
6	4-18-66	90307	

NO. _____ NOTES
REFER TO SHEET 2 OF 2 FOR NOTES

SEE ISSUE CONTROL RECORD FOR COMPLETE LIST OF SHEETS COMPRISING THIS W.D.
SHEET 1 OF 2

SCHEMATIC WIRING DIAGRAM FOR IA CONTROL PANEL

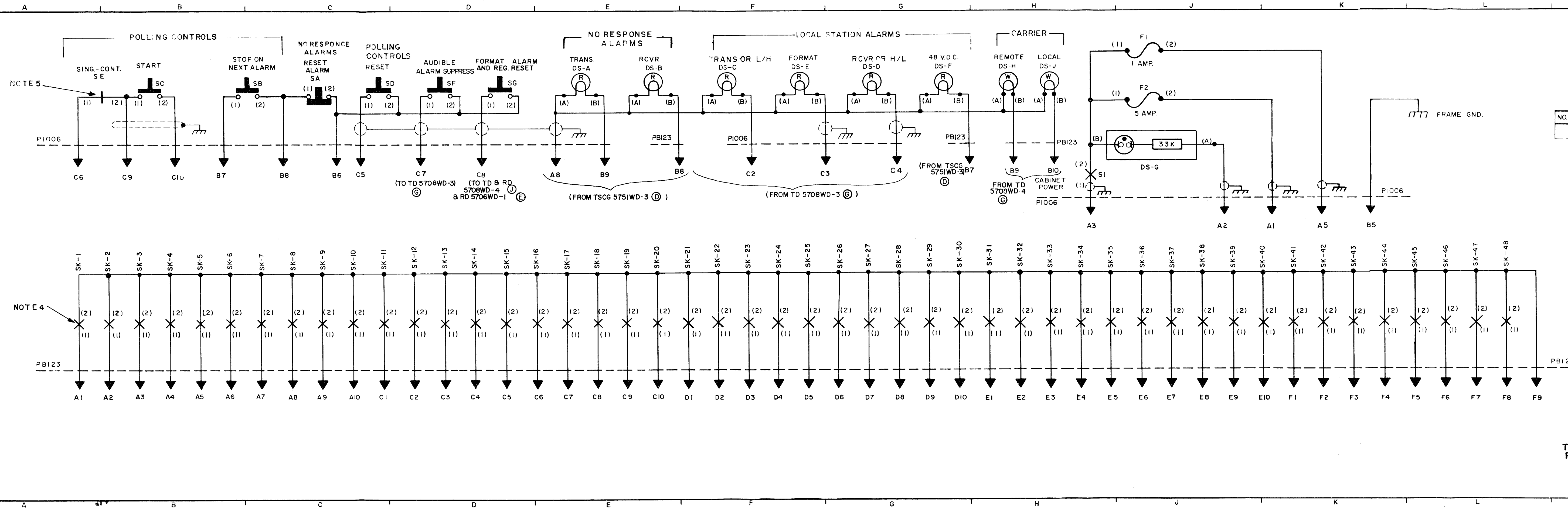
ASSEM. NO. 193205

APPROVALS
D AND R E OF M
E-NUMBER
PROD. NO. 5756 WD

DATE: 9-17-63
P.D. FILE NO. 33-A25AA
DRAWN N.A.R. CHKD. [Signature]
ENGD. S.A.P. APPD. [Signature]

TELETYPE CORPORATION
5756 WD

RTTY ELECTRONICS
TELETYPE=Sales-Service-Parts
PO Box 20101 El Sobrante, Ca.
94820. (510)222-3102
mr_rtty@pacbell.net

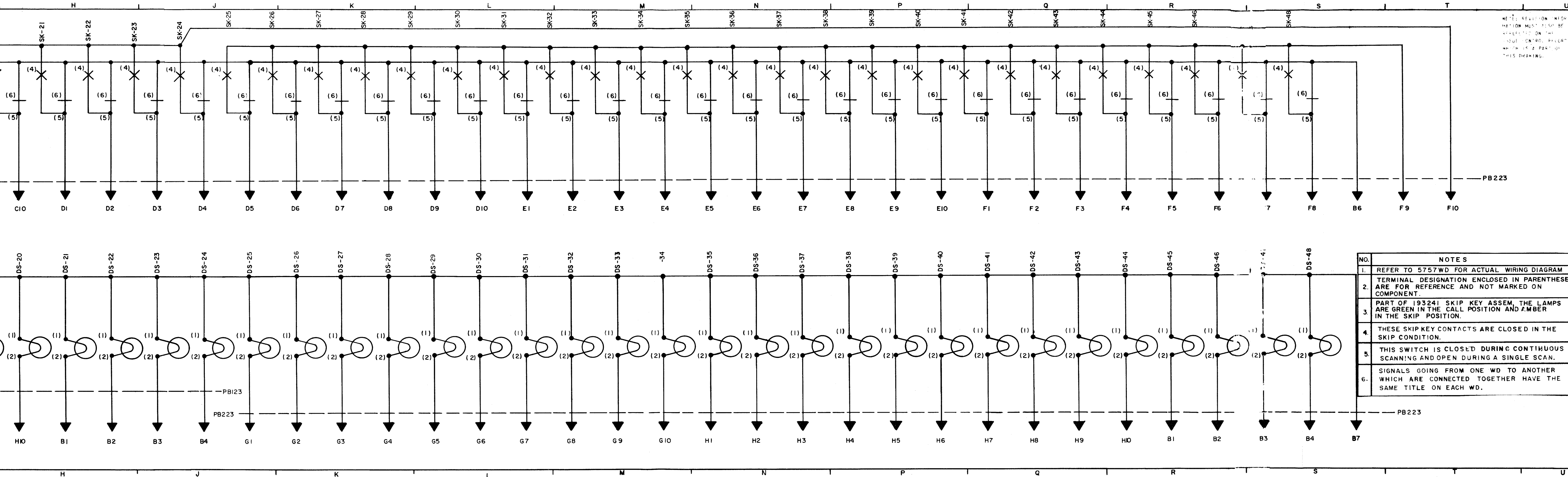


NOTE 5

NOTE 4

NO.	NO.
REFER TO SHEET 2 OF	

RTTY ELECTRONICS
 TELETYPE=Sales-Service-Pe
 PO Box 20101 El Sobrante, Ca
 94820. (510)222-3102
 mr_rtty@pacbell.net



REVISION INFORMATION MUST ALSO BE REFLECTED ON THE ISSUE CONTROL SHEET WHICH IS A PART OF THIS DRAWING.

5756 WD		
REVISIONS		
ISSUE	DATE	AUTH. NO.
2	RECORD ONLY	
3	4-18-66	90307

SEE ISSUE CONTROL RECORD FOR COMPLETE LIST OF SHEETS COMPRISING THIS W.D.
SHEET 2 OF 2

NO.	NOTES
1.	REFER TO 5757WD FOR ACTUAL WIRING DIAGRAM
2.	TERMINAL DESIGNATION ENCLOSED IN PARENTHESES ARE FOR REFERENCE AND NOT MARKED ON COMPONENT.
3.	PART OF 193241 SKIP KEY ASSEM, THE LAMPS ARE GREEN IN THE CALL POSITION AND AMBER IN THE SKIP POSITION.
4.	THESE SKIP KEY CONTACTS ARE CLOSED IN THE SKIP CONDITION.
5.	THIS SWITCH IS CLOSED DURING CONTINUOUS SCANNING AND OPEN DURING A SINGLE SCAN.
6.	SIGNALS GOING FROM ONE WD TO ANOTHER WHICH ARE CONNECTED TOGETHER HAVE THE SAME TITLE ON EACH WD.

SCHEMATIC WIRING DIAGRAM FOR IA CONTROL PANEL

ASSEM NO. 193205

APPROVALS	
DRAWN	BY E OF M
E-NUMBER	
PROD. NO. 5756 WD	

DATE: 9-20-63
P.D. FILE NO. 33-A25A A
DRAWN N.A.R. CHKD. [Signature]
ENGD. S.A.P. APPD. [Signature]

TELETYPE CORPORATION
5756 WD

