

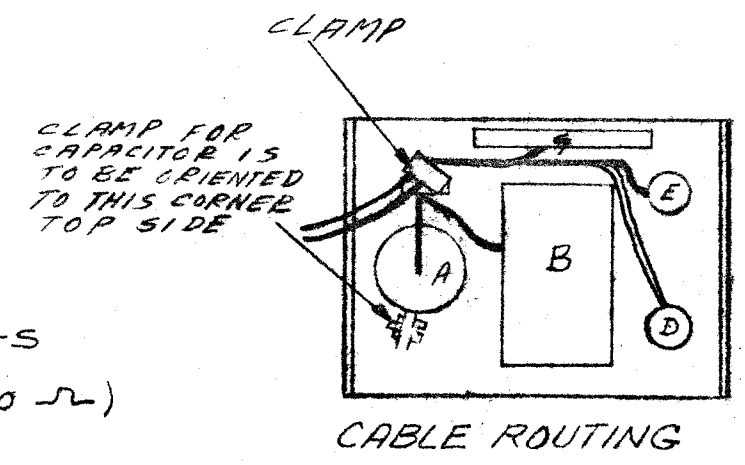
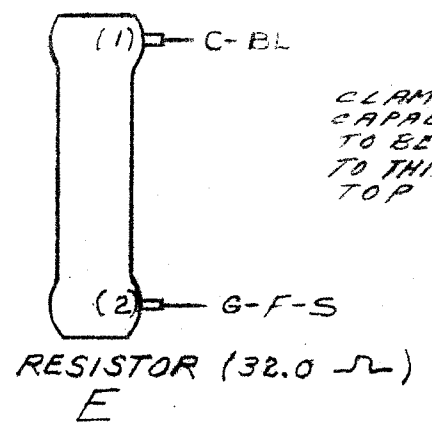
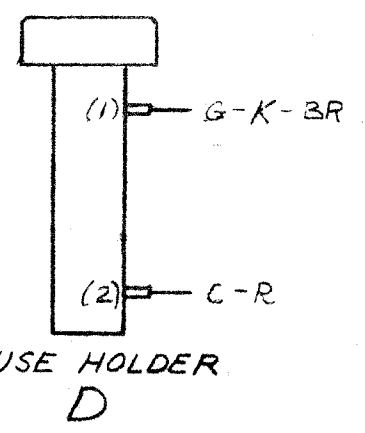
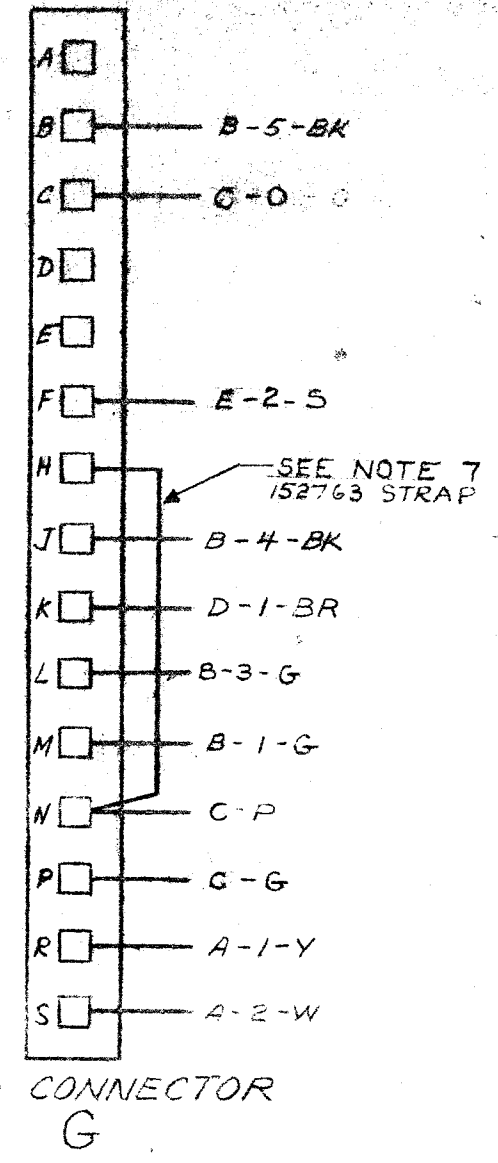
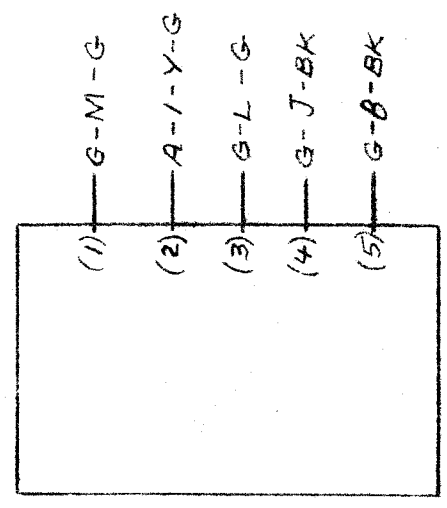
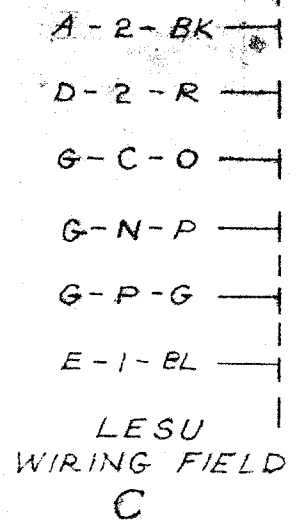
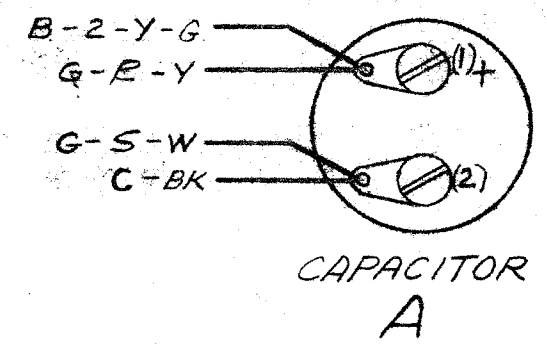
5826 WD		
ISSUE	DATE	AUTH. NO.
A	7-30-62	16072

NOTES

- COLOR CODE:**
 BK - BLACK G - GREEN
 R - RED BL - BLUE
 O - ORANGE P - PURPLE
 Y - YELLOW W - WHITE
 Y-G - YELLOW-GREEN
- SOLDER TERMINALS ON CAPACITOR "A" TO BE POSITIONED TO PREVENT TERMINALS FROM TOUCHING EACH OTHER OR MOUNTING PLATE; BEND UPWARD FOR EASE OF SOLDERING.**
- WIRING LEGEND:**

 A-1-W-BL
 WIRE COLOR CODE.
- CABINET POWER MUST BE 115V. 60 ~ A.C.**
- ALL SWITCHES AND CONNECTORS VIEWED FROM THE SOLDERED SIDE.**
- ASSOCIATED CABLES:**
 193435 - CABLE ASSEMBLY W/TERMINALS
 165696 - CABLE ASSEMBLY W/TERMINALS
- SIGNAL INPUT IMPEDANCE IS 30 OHMS. FOR 680 OHM RESISTANCE REMOVE 152763 STRAP IN AREA G.**

RTTY ELECTRONICS
 TELETYPE=Sales-Service-Parts
 PO Box 20101 El Sobrante, Ca.
 94820. (510)222-3102
 mr_rtty@pacbell.net



SEE BM FOR APPROPRIATE
 CABLE ASSEMBLY

APPROVALS	
D AND R	E OF M
<i>[Signature]</i>	<i>[Signature]</i>
E. NUMBER	
PROD. NO. 5826 WD	

ACTUAL WIRING
 DIAGRAM OF
 500MA SELECTOR
 MAGNET DRIVER
 FOR M35 SETS
 (20 MA INPUT)

DATE: 5-20-62
P.D. FILE NO. 159.151AA
DRAWN. A.D. CHKD. <i>[Signature]</i>
ENG. R.D.S. APPD. <i>[Signature]</i>
TELETYPE CORPORATION
5826 WD