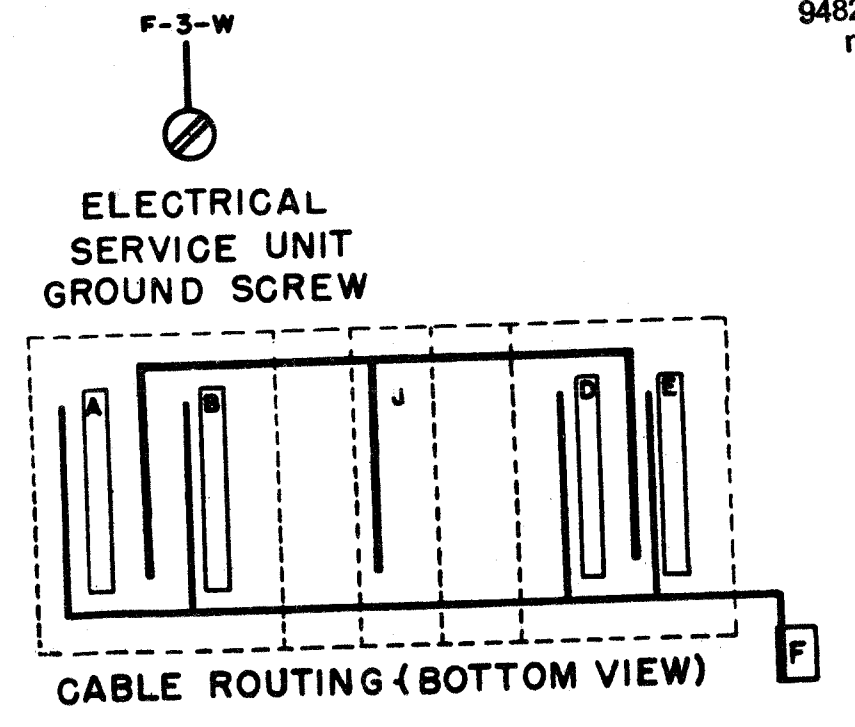
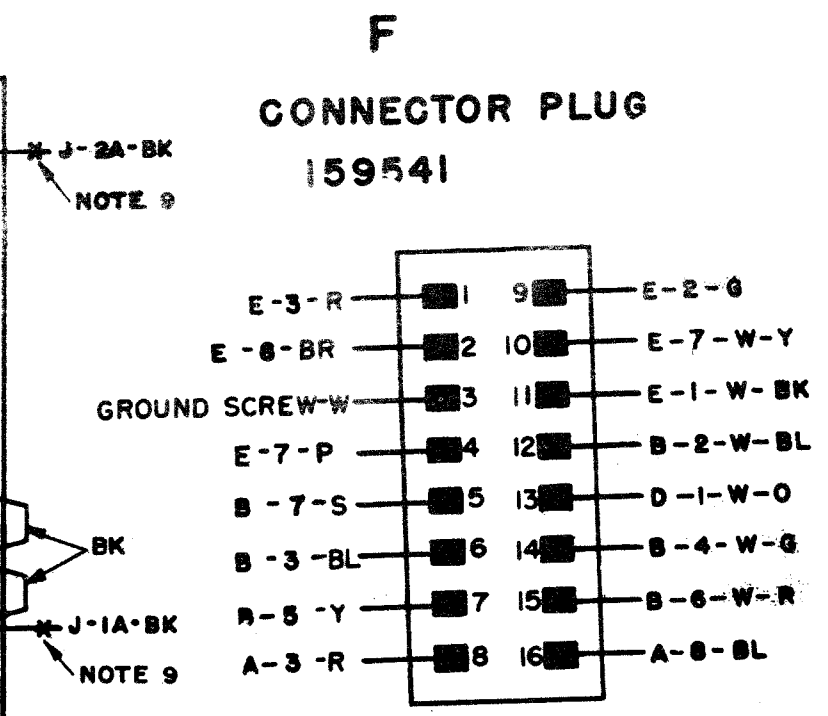
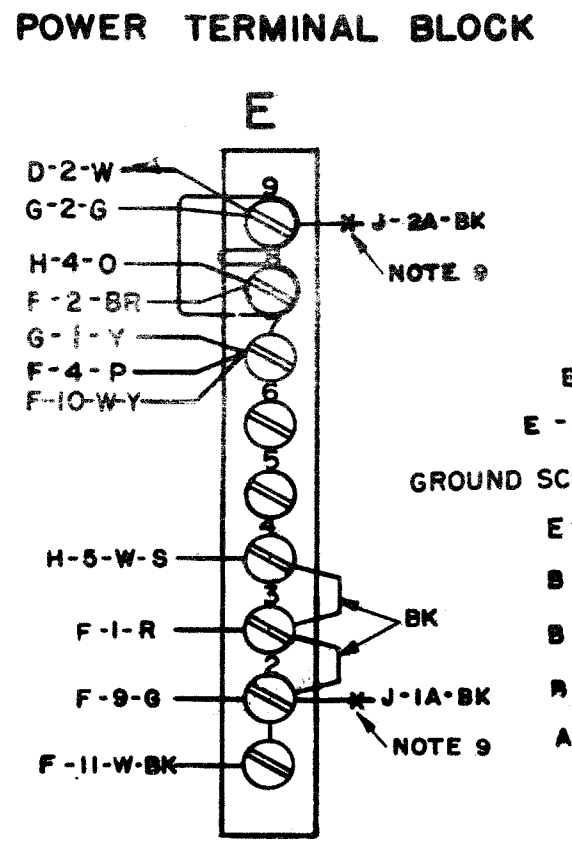
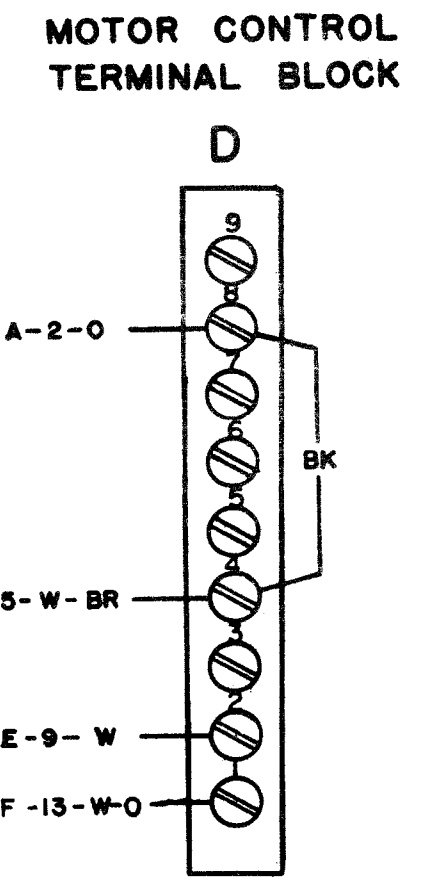
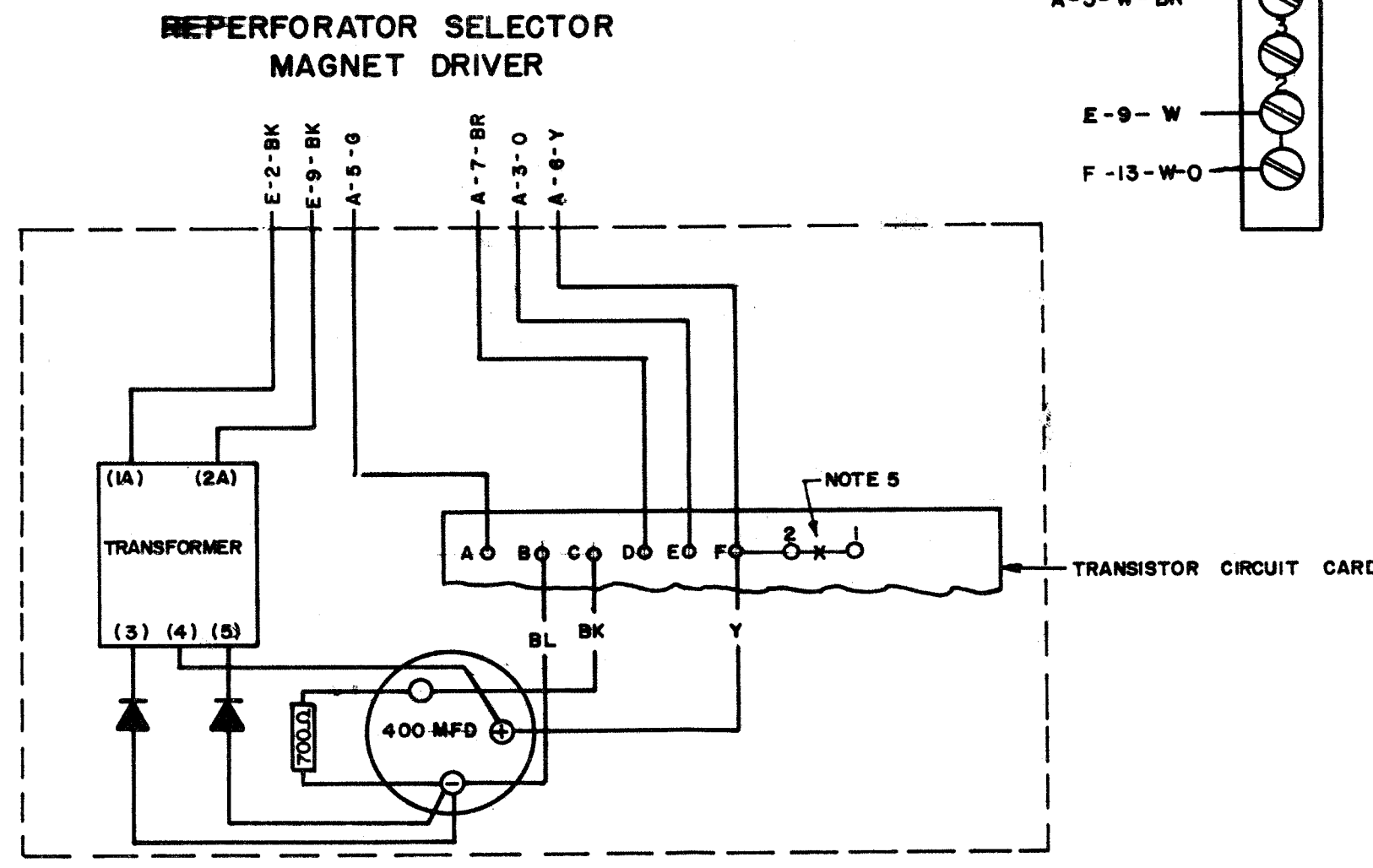
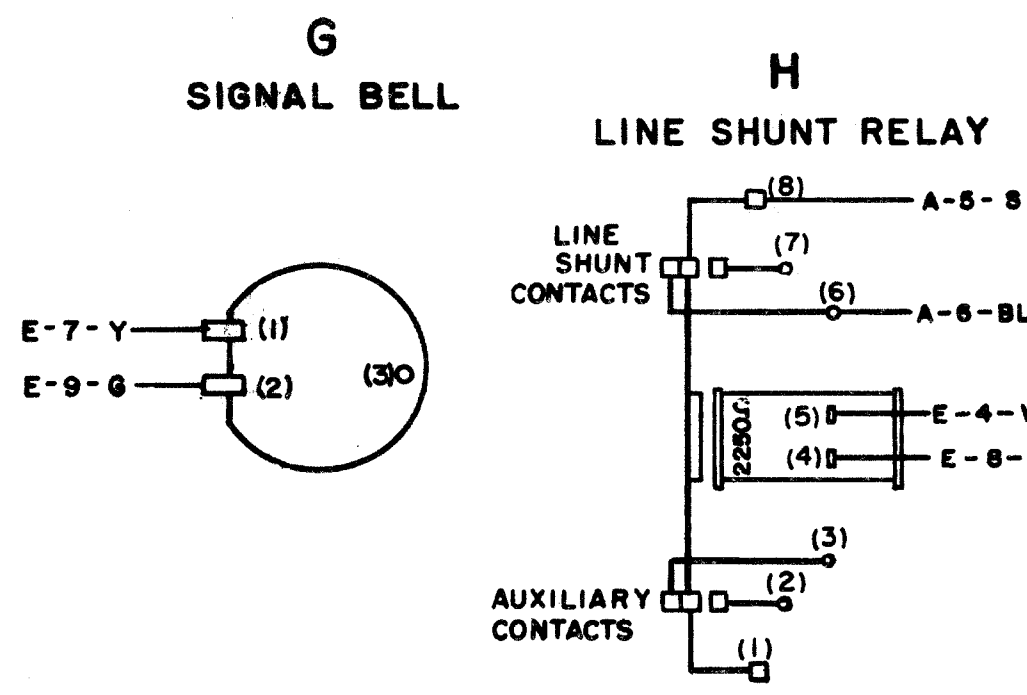
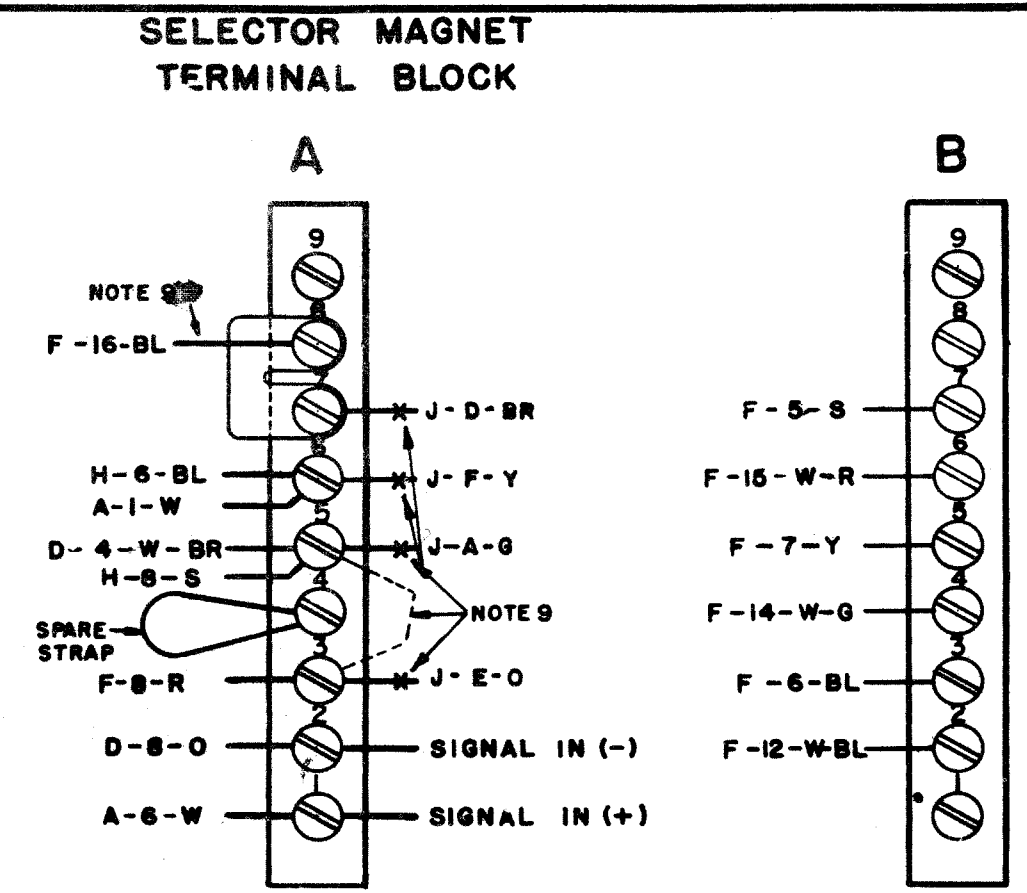


REVISIONS		
ISSUE	DATE	AUTH. NO.

- NOTES**
1. WIRING LEGEND:
 - DISTANT TERMINATING AREA
 - DISTANT TERMINAL DESIGNATION
 - WIRE COLOR CODE
 2. COLOR CODE

BK - BLACK	W-BK - WHITE - BLACK
BR - BROWN	W-BR - WHITE - BROWN
R - RED	W-R - WHITE - RED
O - ORANGE	W-O - WHITE - ORANGE
Y - YELLOW	W-Y - WHITE - YELLOW
G - GREEN	W-G - WHITE - GREEN
BL - BLUE	W-BL - WHITE - BLUE
P - PURPLE	W-P - WHITE - PURPLE
W - WHITE	W-S - WHITE - SLATE
S - SLATE	
 3. UNIT WIRED FOR 115 VOLTS 50 TO 60 CYCLE A.C. POWER INPUT ONLY.
 4. CONNECTOR VIEWED FROM SOLDER TERMINAL END.
 5. CIRCUITS SHOWN FOR .060 AMP. NEUTRAL SIGNAL LINE OPERATION. FOR .020 AMP NEUTRAL OPERATION REMOVE CONNECTIONS AS TABULATED BELOW.

SIGNAL LINE CURRENT	CONNECTION REMOVED
020 AMP.	J1 TO J2
 6. LINE SHUNT RELAY SHOWN. CONTROLLED BY POWER SWITCH AND SHUNTING SELECTOR MAGNET DRIVER.
 7. SELECTOR MAGNETS ARE TO BE WIRED IN PARALLEL FOR 60 MILLIAMPERE OPERATION
 8. ASSOC. CABLE NUMBERS
159939 CABLE ASSEM., LESU
 9. SELECTOR MAGNETS CAN BE CONNECTED DIRECTLY IN THE SIGNAL LINE CIRCUIT FOR NEUTRAL OPERATION AS FOLLOWS: DISCONNECT AND TAPE ALL SELECTOR MAGNET DRIVER LEADS SHOWN (-). 20 MILLIAMPERE, 60 & 75 WPM OPERATION (OR ANY INTERMEDIATE SPEED).
 - A. STRAP A5 TO A5
 - B. MOVE BLUE LEAD FROM TERMINAL A8 TO A8
 60 MILLIAMPERE, 60, 75 & 100 WPM OPERATION (OR ANY INTERMEDIATE SPEED)
 - A. STRAP A5 TO A5
 - B. MOVE BLUE LEAD FROM TERMINAL A8 TO A6
 - C. CHANGE WIRING ON SELECTOR MAGNETS FOR 60 MILLIAMPERE OPERATION.



FOR SCHEMATIC SEE 5931WD

RTTY ELECTRONICS
TELETYPE=Sales-Service-Parts
PO Box 20101 El Sobrante, Ca.
94820. (510)222-3102
mr_rtty@pacbell.net

ACTUAL WIRING DIAGRAM. MODEL 28 ELECTRICAL SERVICE UNIT. LESU 96

APPROVALS

D AND R	E OF M
---------	--------

E-NUMBER

PROD. NO. 5930 WD

DATE: 9-1-62

P.D. FILE NO.: 59/5885AA

DRAWN EE CHKD [Signature]

ENG'D RSP APPD.

TELETYPE CORPORATION

5930 WD