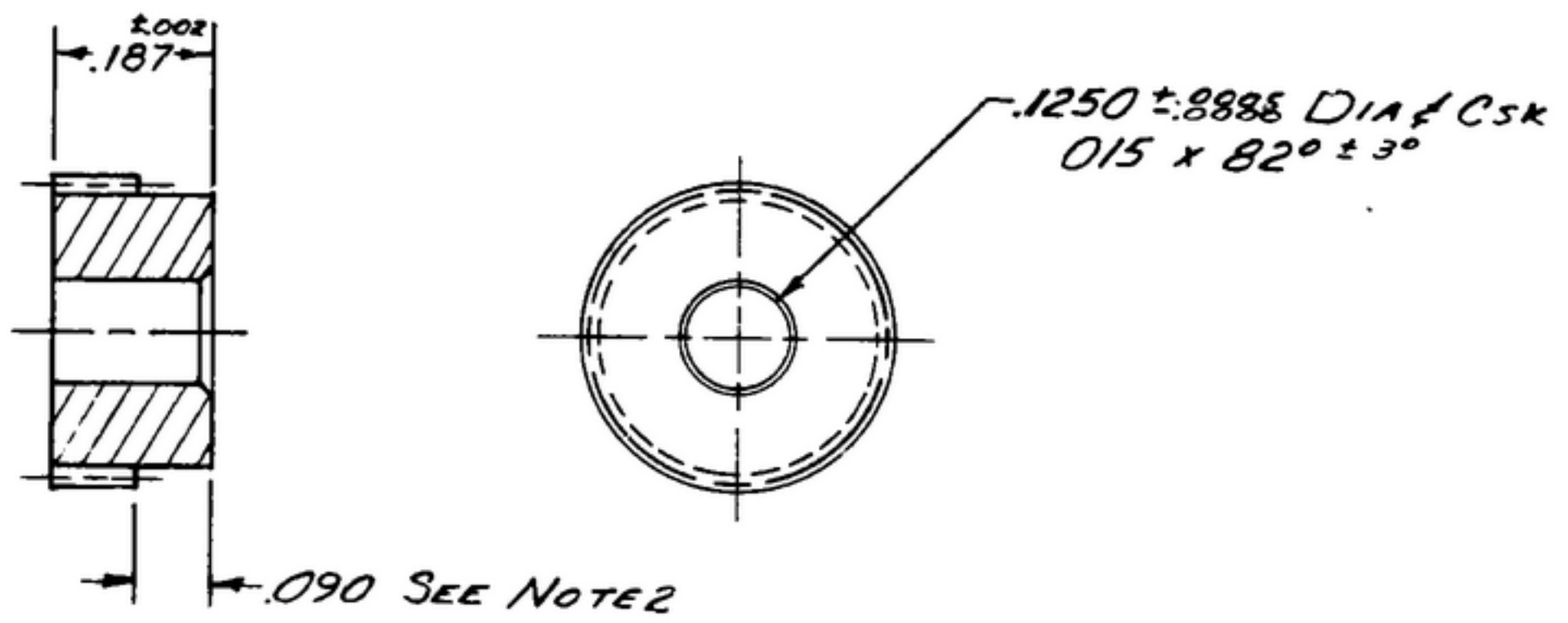


R-7 576 1876 002

NOTICE: When Government drawings, specifications, or other data are used for any purpose other than in connection with a definitely related Government procurement operation, the United States Government thereby incurs no responsibility or any obligation whatsoever, and the fact that the Government may have furnished, or in any way supplied the said drawings, specifications, or other data is not to be regarded by implication or otherwise as in any manner licensing the holder or any other person or corporation, or conveying any rights or permission to manufacture, use or sell any patented invention that may in any way be related thereto.

NEXT ASSEMBLY	USED ON	SWE * APPROVAL	REVISIONS	DATE	APPROVAL
SM-D-178679	SC-DL-178467	S Y M 10043-3	SYN		
SM-D-343600	SC-DL-248775		A ₃	6 OCT. 59	42428-PC-59-A1-51
SM-D-248975					REV'D. PME



- (A₁) STEEL, COMR3035, COND. B, PER SPEC. MIL-S-7720.
- 1-NORMAL DIAMETRAL PITCH 24
 - THEORETICAL PITCH DIAMETER .333
 - NUMBER OF TEETH 8
 - PRESSURE ANGLE 20°
 - BACKLASH ON NORMAL PITCH CIRCLE WHEN MATED WITH MASTER .000-.001
 - AMERICAN STANDARD INVOLUTE TOOTH FORM
 - 2-REMOVE A PORTION OF EVERY OTHER TOOTH TO ROOT DIAMETER.
 - 3-ECCENTRICITY BETWEEN PITCH DIAMETER & BORE SHALL NOT EXCEED .002 TIR.
 - 4-REMOVE ALL BURRS.
 - (A₂) 5-FINISH: E 300 PER SPEC. MIL-F-14072.

NOTE:
*FOR INFORMATION ONLY,
CONTRACTOR MAY AT HIS
OPTION DEVIATE FROM
THESE PROCESS DETAILS

UNLESS OTHERWISE SPECIFIED	AUTHENTICATION	DESCRIPTION	DATE	SPEC	NOTE
DIMENSIONS ARE IN INCHES	DRAWN <i>ZBSE-PN</i>	GEAR			
TOLERANCES ON FRACTIONS ± 1/64	TRACED <i>PHO TO</i>				
DECIMALS ± .005	CHECKED <i>[initials]</i>				
ANGLES ±	VERIFIED <i>PD BR</i>				
COMMERCIAL TOLERANCES APPLY TO STOCK SIZES	APPROVED <i>PD BR</i>				
ALL SURFACES ✓	REVIEWED <i>PME</i>				
	DATE 30-JUN-53	SCALE 4/1			

DEPARTMENT OF THE ARMY
SIGNAL CORPS ENGINEERING LABORATORIES
FORT MONMOUTH, NEW JERSEY
SM-B-178701