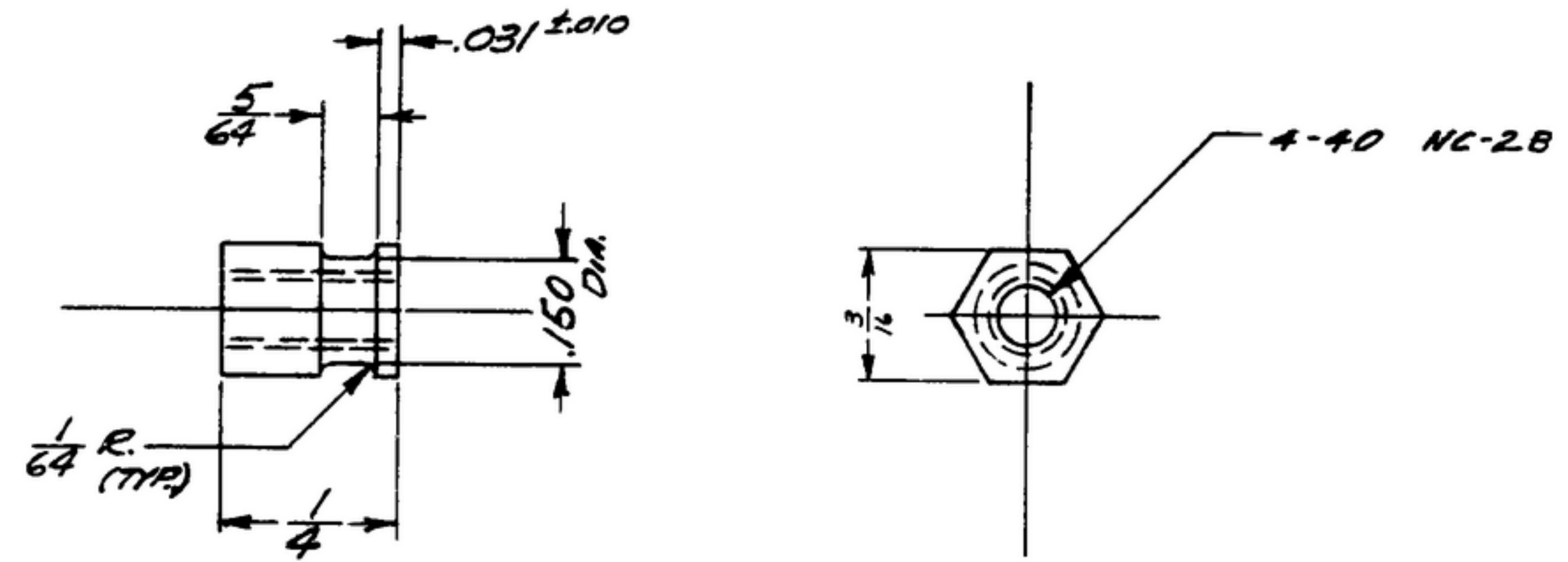


-506-6281-002 R.391

NOTICE: WHEN GOVERNMENT DRAWINGS, SPECIFICATIONS, OR OTHER DATA ARE USED FOR ANY PURPOSE OTHER THAN IN CONNECTION WITH A DEFINITELY RELATED GOVERNMENT PROCUREMENT OPERATION, THE UNITED STATES GOVERNMENT THEREBY INCURS NO RESPONSIBILITY FOR ANY OBLIGATION WHATSOEVER AND THE FACT THAT THE GOVERNMENT MAY HAVE FORMULATED, FURNISHED, OR IN ANY WAY SUPPLIED THE SAID DRAWINGS, SPECIFICATIONS, OR OTHER DATA IS NOT TO BE CONSTRUED BY IMPLICATION OR OTHERWISE AS IN ANY MANNER LICENSING THE HOLDER OR ANY OTHER PERSON OR CORPORATION, OR CONVEYING ANY RIGHTS BY PERMISSION TO MANUFACTURE, USE, OR SELL ANY PATENTED INVENTION THAT MAY IN ANY WAY BE RELATED THERETO.

NOTE:
*FOR INFORMATION ONLY, CONTRACTOR MAY AT HIS OPTION DEVIATE FROM THESE PROCESS DETAILS

*SWE APPROVAL		REVISIONS			
SYM	PR	SYM	DESCRIPTION	DATE	APPROVAL
	PR10072-4	A ₂	A ₁ -NOTE 1 WAS "COMP B" PER SPEC. QQ-B-611; ADDED NOTE 2. A ₂ -ADDED APPL. SM-D-249100, SC-DL-248775.	8 OCT. 59	42428-PC-59-A1-51 REV'D PME



NOTES: (A₁)
1.-BRASS, COMP 22 COND 1/2 H, PER SPEC. QQ-B-626.
2.-FINISH: M258 PER SPEC. MIL-F-14072.

REQ	PART NO.	DESCRIPTION	QTY	MATL SPEC
LIST OF MATERIAL				

(A ₂)	SM-D-249100	SC-DL-248775	UNLESS OTHERWISE SPECIFIED DIMENSIONS ARE IN INCHES TOLERANCES ON FRACTIONS DECIMALS ANGLES $\pm \frac{1}{64}$... $\pm .005$	AUTHENTICATION		NUT	SIGNAL CORPS ENGINEERING LABORATORIES FORT MONMOUTH NEW JERSEY
	SM-D-178679	SC-DL-178467		DRAWN 21852-PA- JD-93	TRACED PHOTO		
NEXT ASSY	USED ON	CHECKED <i>K</i>	VERIFIED <i>PO BR</i>				
APPLICATION		APPROVED <i>PO BR</i>	REVIEWED <i>PME</i>				
		DATE 28, OCT, 59	SCALE 1/1	-90-441-			