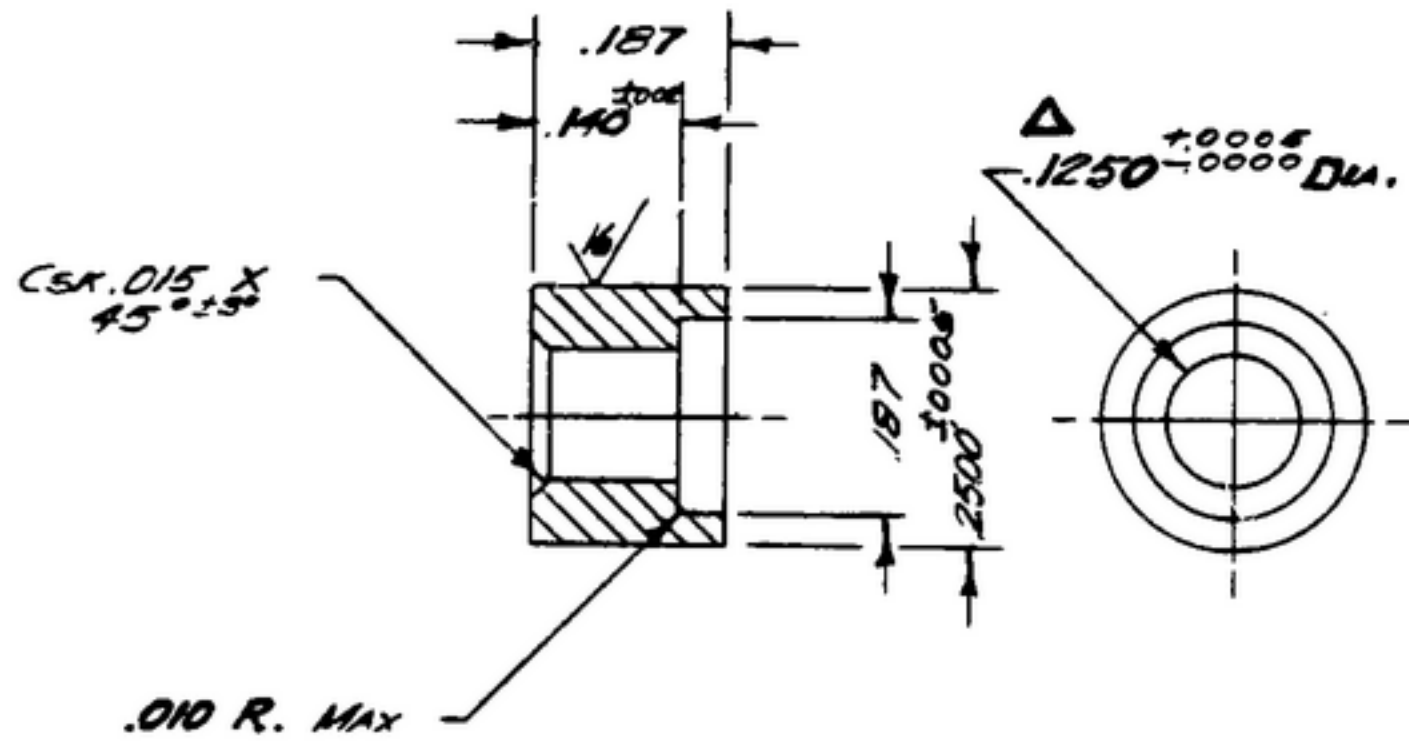


NOTICE: When Government drawings, specifications, or other data are used for any purpose other than in connection with a definitely related Government procurement operation, the United States Government thereby incurs no responsibility or any obligation whatsoever; and the fact that the Government may have furnished, furnished, or in any way supplied the said drawings, specifications, or other data is not to be regarded by implication or otherwise as in any manner licensing the holder or any other person or corporation, or conveying any rights or permission to manufacture, use or sell any patented invention that may in any way be related thereto.

506-2098 002

R-991

NEXT ASSEMBLY	USED ON	SWE *	SYMBOL	REVISIONS	DATE	APPROVAL
	SC-DL-178467	APPROVAL	A <sub>2</sub>	A <sub>1</sub> - STEEL SPEC. WAS "AN-S-771" FINISH WAS "PER SPEC MIL-P-12011."	9 OCT 59	42428-PC-57-A1-51
	SC-DL-248775	S P Y M		A <sub>2</sub> - REVISED APPL.		REV'D. PME



NOTES:

- 1. - STEEL, COMP. 303S COND B. PER SPEC. MIL-S-7720.
- 2. - REMOVE ALL BURRS.
- 3. - ECCENTRICITY BETWEEN DIAMETERS MARKED ON SAME CENTER LINE SHALL NOT EXCEED .001 TIR.
- 4. - FINISH: E 300 PER SPEC. MIL-F-14072.

NOTE:

FOR INFORMATION ONLY,  
CONTRACTOR MAY AT HIS  
OPTION DEVIATE FROM  
THESE PROCESS DETAILS

(X SAME AS SWE PART NO. 574810)

UNLESS OTHERWISE SPECIFIED	AUTHENTICATION	DESCRIPTION	DATE	BY
DIMENSIONS ARE IN INCHES TOLERANCES ON FRACTIONS ± 1/64 DECIMALS ± .005 ANGLES ± _____ COMMERCIAL TOLERANCES APPLY TO STOCK SIZES ALL SURFACES ✓	DRAWN 21852-PH 50-95 TRACED PHOTO CHECKED [Signature] VERIFIED PDBR APPROVED PDBR REVIEWED PME DATE 15 JUL 53	ROLLER	SCALE 4/1	
				DEPARTMENT OF THE ARMY SIGNAL CORPS ENGINEERING LABORATORIES FORT MONMOUTH NEW JERSEY
				SM-B-178739