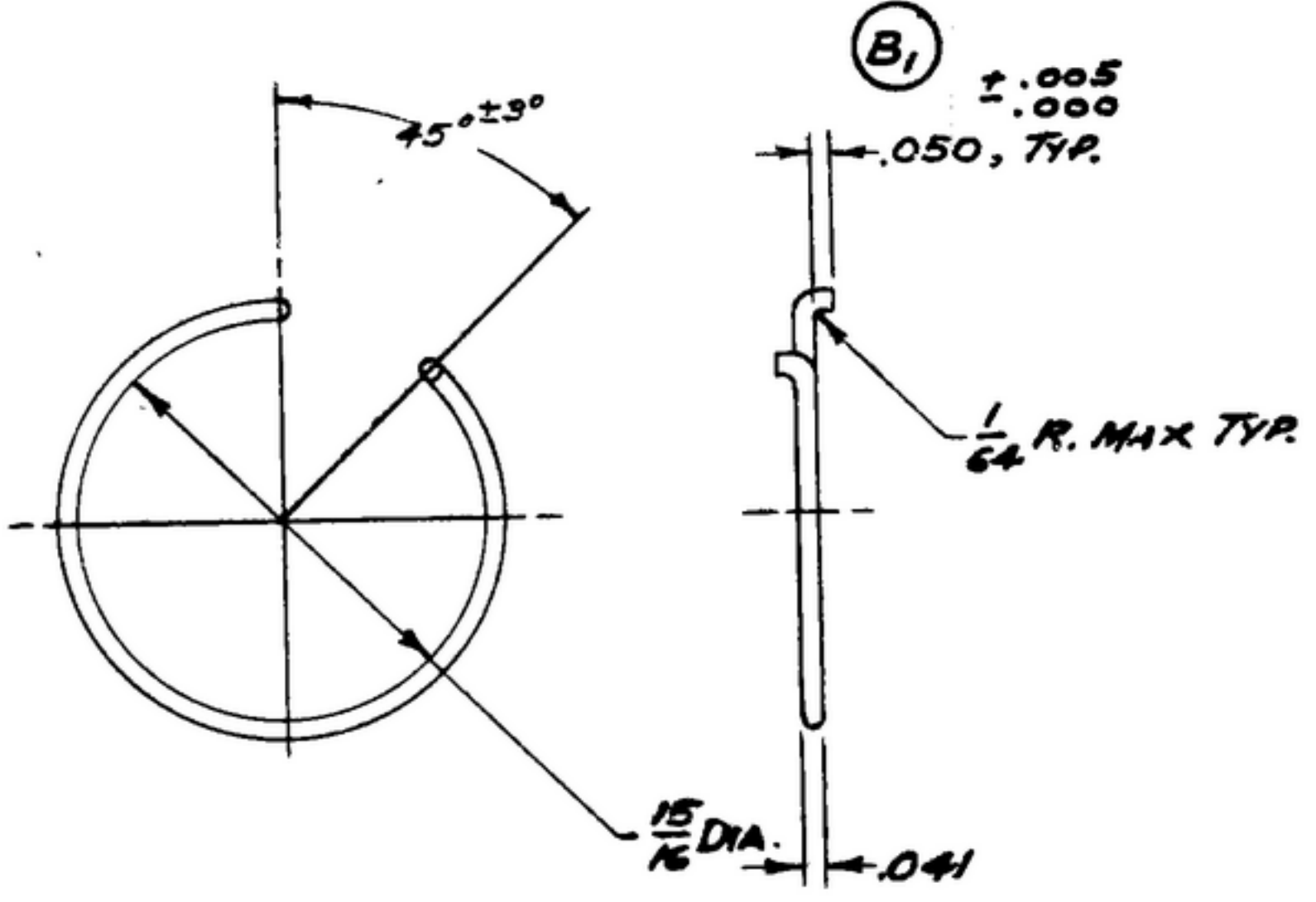


NOTICE: When Government drawings, specifications, or other data are used for any purpose other than in connection with a definitely related Government procurement operation, the United States Government hereby incurs no responsibility or obligation whatsoever; and the fact that the Government may have furnished, or in any way supplied the said drawings, specifications, or other data is not to be regarded by implication or otherwise as in any manner favoring the holder or any other person or corporation, or conveying any rights or permission to manufacture, use or sell any patented invention that may in any way be related thereto.

NEXT ASSEMBLY	USED ON
SM-C-178855	SC-DL-178467
SM-C-178855	SC-DL-248775
SM-C-178855	SC-DL-144500

SWE * APPROVAL		REVISIONS		DATE	APPROVAL
SYM	DESCRIPTION	DATE	APPROVAL		
A <sub>2</sub>	A <sub>1</sub> -WIRE SPEC. WAS AN-W-17, ADDED FINISH NOTE; A <sub>2</sub> -ADDED APPL. SM-C-178855, SC-DL-248775.	8 OCT. 59	REV'D.	42428-PC-59-A1-51	
B	(1) -.050 ± .005 DIM. WAS .040	22 FEB. 61	REV'D. PME	42428-PC-59	
C <sub>1</sub>	SPEC MIL-F-14072 WAS MIL-P-14072.	25 SEP 64	REV'D. EC-2	15283-PP-63	

NOTE: \*FOR INFORMATION ONLY, CONTRACTOR MAY AT HIS OPTION DEVIATE FROM THESE PROCESS DETAILS



NOTES:

- (A<sub>1</sub>) 1.- WIRE, SPRING STEEL, PER SPEC. QQ-W-470.
- 2.- SPRING SHOWN IN FREE POSITION.
- 3.- MINIMUM LOAD AT 35° ROTATION TO BE 0.7 INCH LBS. (ROTATING ENDS TOWARD ONE ANOTHER).
- 4.- FINISH: M 262 AND E 200 PER SPEC. MIL-F-14072. (C<sub>1</sub>)

UNLESS OTHERWISE SPECIFIED  
 DIMENSIONS ARE IN INCHES  
 TOLERANCES ON FRACTIONS ± 1/64  
 DECIMALS ± .005  
 ANGLES ± —  
 COMMERCIAL TOLERANCES APPLY TO STOCK SIZES  
 ALL SURFACES ✓

ISSUE	DATE	DESCRIPTION	DATE	SPEC	NOTE
<b>SPRING</b>					
AUTHENTICATION DRAWN 21852-PH-50-93 TRACED PH670 CHECKED [Signature] VERIFIED P.D.BR. APPROVED P.D.BR. REVIEWED P.M.E. DATE 8 JUL 53					
DEPARTMENT OF THE ARMY SIGNAL CORPS ENGINEERING LABORATORIES FORT MONMOUTH NEW JERSEY					
<b>SM-B-178857</b>					

OK