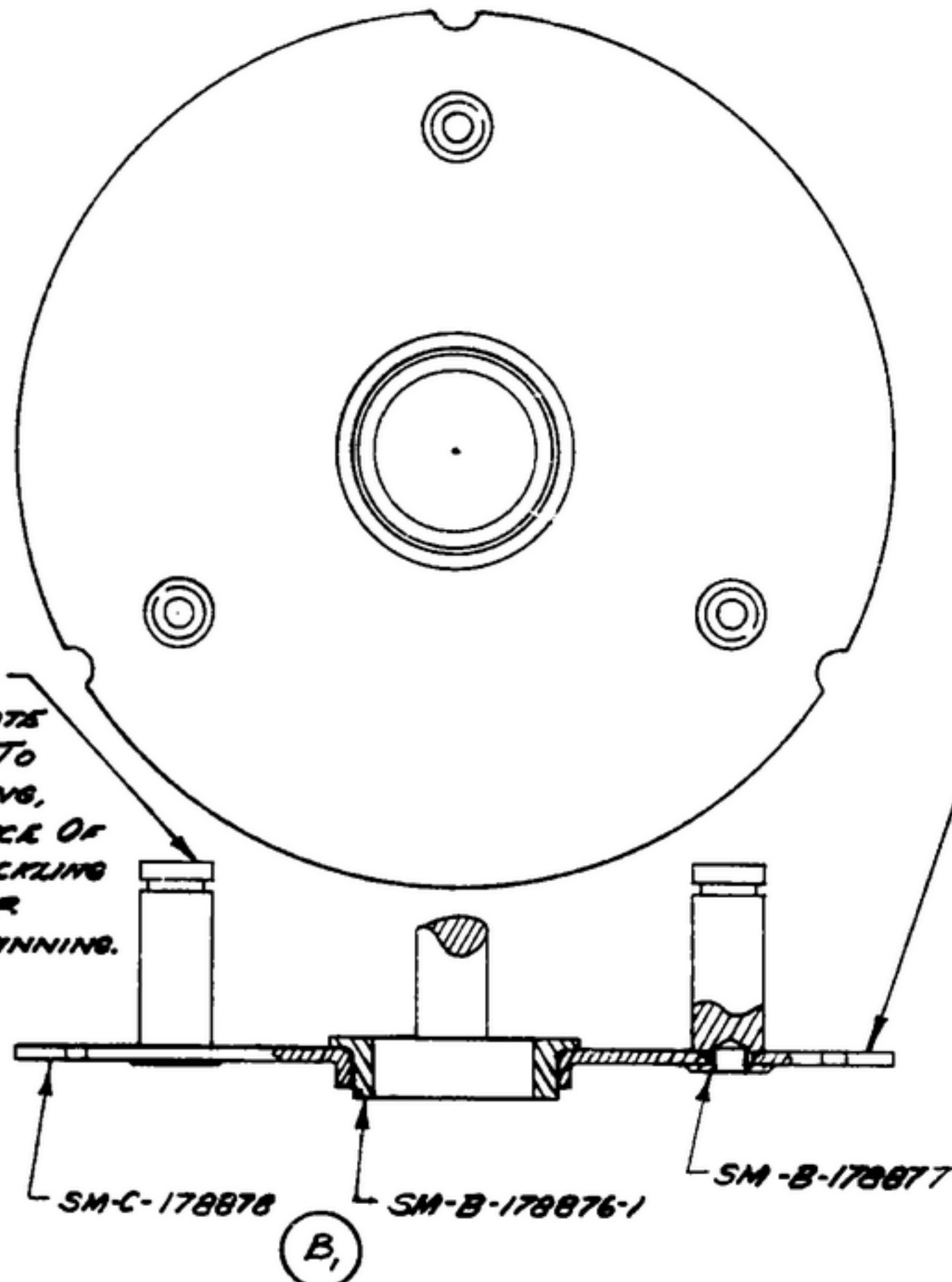


NOTICE: WHEN GOVERNMENT DRAWINGS, SPECIFICATIONS, OR OTHER DATA ARE USED FOR ANY PURPOSE OTHER THAN IN CONNECTION WITH A DEFINITELY RELATED GOVERNMENT PROCUREMENT OPERATION, THE UNITED STATES GOVERNMENT THEREBY INCURS NO RESPONSIBILITY FOR ANY DELAY OR WHATEVER; AND THE FACT THAT THE GOVERNMENT MAY HAVE FORMULATED, FURNISHED, OR IN ANY WAY SUPPLIED THE SAID DRAWINGS, SPECIFICATIONS, OR OTHER DATA IS NOT TO BE REGARDED BY IMPLICATION OR OTHERWISE AS IN ANY MANNER LICENSING THE HOLDER OR ANY OTHER PERSON OR CORPORATION, OR CONVEYING ANY RIGHTS OR PERMISSION TO MANUFACTURE, USE, OR SELL ANY PATENTED INVENTION THAT MAY IN ANY WAY BE RELATED THERETO.

REVISIONS			
SYM	DESCRIPTION	DATE	APPROVAL
A	(1) ADDED APX SM-C-343590 SC-DL-248775	9 OCT. 59	42428-PC-59 APX REV'D
B	(1) REVISED PICTORIALY-BEARING REVERSE	5 APR. 61	42428-PC-59 REV'D PME



- 1-AS SUPPLIED BY CHRYSLER CORP, AMPEX DIVISION, DETROIT 31, MICH, OR EQUIV
- 2-PRESS SM-B-178876-1 INTO SM-C-178878 AS SHOWN.
- 3-PRESS SM-B-178877 INTO SM-C-178878 AND SPIN OVER AS SHOWN.
- 4-BURNISH BORE OF SM-B-178876-1 TO .4375 <sup>+0.0010</sup> DIA

PINS MUST BE VERTICAL TO PLATE AND PARALLEL TO BORE IN BEARINGS, WITH NO EVIDENCE OF DIMPLING OR BUCKLING OF PLATE AFTER PRESSING AND SPINNING.

THIS SURFACE MUST BE FLAT WITHIN .015 T.I.R

- 1 SM-B-178876-1 BEARING, FA-577
- 1 SM-C-178878 PLATE
- 3 SM-B-178877 PIN

REQD	PART NO.	DESCRIPTION	MATL	MATL SPEC	NOTE
LIST OF MATERIAL					

UNLESS OTHERWISE SPECIFIED	
DIMENSIONS ARE IN INCHES	
TOLERANCES ON	
FRACTIONS	DECIMALS ANGLES
SM-C-343590	SC-DL-248775
SM-C-178878	SC-DL-178877
NEXT ASSY	USED ON
APPLICATION	

AUTHENTICATION	
DRAWN	21832 - PH-50-93
TRACED	PHOTO
CHECKED	<i>[Signature]</i>
VERIFIED	P.D.BR.
APPROVED	P.D.BR.
REVIEWED	P.M.E.
DATE	4 AUG. '53

PLATE ASSY

SCALE 2/1

SIGNAL CORPS ENGINEERING LABORATORIES  
PORT MONMOUTH NEW JERSEY

SM-B-178876