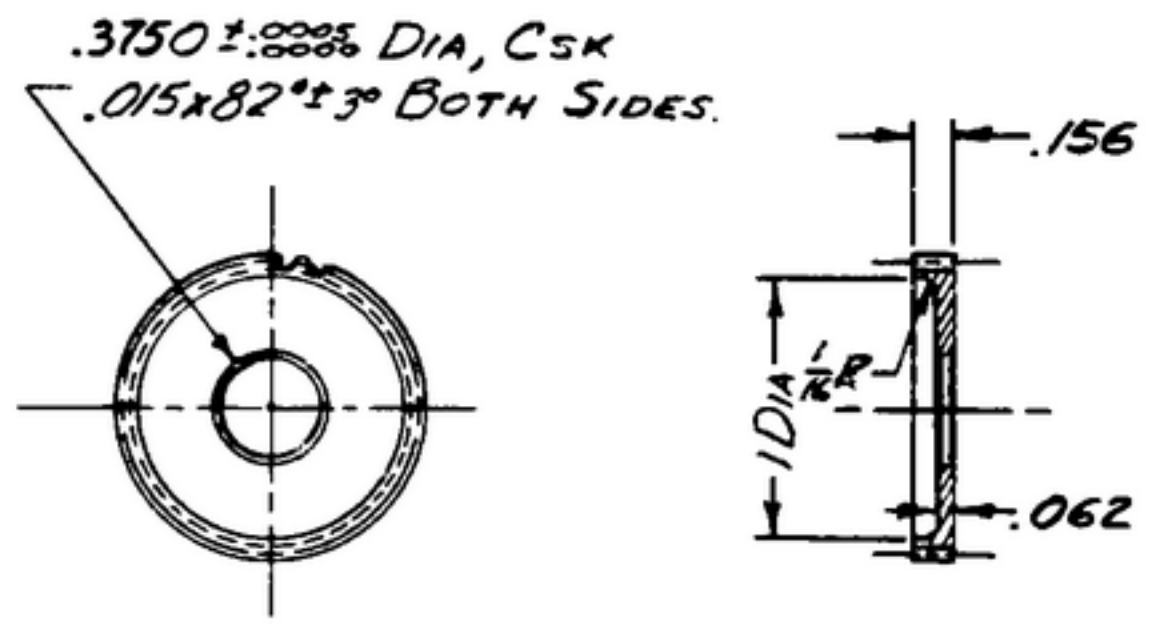


1.2

500 1789 2A2

NOTICE: When Government drawings, specifications, or other data are used for any purpose other than in connection with a definitely related Government procurement operation, the United States Government thereby incurs no responsibility or any obligation whatsoever, and the fact that the Government may have furnished, or in any way supplied the said drawings, specifications, or other data is not to be regarded by implication or otherwise as in any manner licensing the holder or any other person or corporation, or conveying any rights or permission to manufacture, use or sell any patented invention that may in any way be related thereto.

NEXT ASSEMBLY	USED ON	SWE * APPROVAL	REVISIONS	DATE	APPROVAL
SM-B-178912	SC-DL-178467	<del>SYM</del>	DESCRIPTION		
SM-D-248975	SC-DL-248775	<del>SYM</del>	A <sub>1</sub> STEEL SPEC WAS COMP FM PER SPEC AN-5-771	5 Oct 59	42428-PC-59-A1-51
SM-D-343600		100423	A <sub>2</sub> ADDED APPL SM-D-248975, SM-D-343600, SC-DL-248775		REV'D FTR



NOTES: (A<sub>1</sub>)

- STEEL, COMP 303S COND B, PER SPEC MIL-S-7720
- NORMAL DIAMETRAL PITCH 48.  
THEORETICAL PITCH DIAMETER 1.125.  
NUMBER OF TEETH 54.  
PRESSURE ANGLE 14 1/2°  
BACKLASH ON NORMAL PITCH CIRCLE  
WHEN MATED WITH MASTER .0015-.0025  
AMERICAN STANDARD INVOLUTE TOOTH FORM.
- ECCENTRICITY BETWEEN P.D.  
± BORE MUST NOT EXCEED .002 TIR.

NOTE:  
\*FOR INFORMATION ONLY,  
CONTRACTOR MAY AT HIS  
OPTION DEVIATE FROM  
THESE PROCESS DETAILS

UNLESS OTHERWISE SPECIFIED	AUTHENTICATION	GEAR	DEPARTMENT OF THE ARMY SIGNAL CORPS ENGINEERING LABORATORIES FORT MONMOUTH NEW JERSEY
DIMENSIONS ARE IN INCHES	DRAWN 21852-PH 50-95	GEAR	SM-B-178913
TOLERANCES ON	TRACED PHOTO		
FRACTIONS ± 1/64	CHECKED <i>[Signature]</i>		
DECIMALS ± .005	VERIFIED P.D.B.R.		
ANGLES ±	APPROVED P.D.B.R.		
COMMERCIAL TOLERANCES APPLY TO STOCK SIZES	REVIEWED P.M.E.		
ALL SURFACES ✓	DATE 29-May-53	SCALE 1/1	

WHEN REFERRING TO THIS DRAWING STATE DRAWING NO., APPLICABLE ISSUE SYMBOL AND DATE