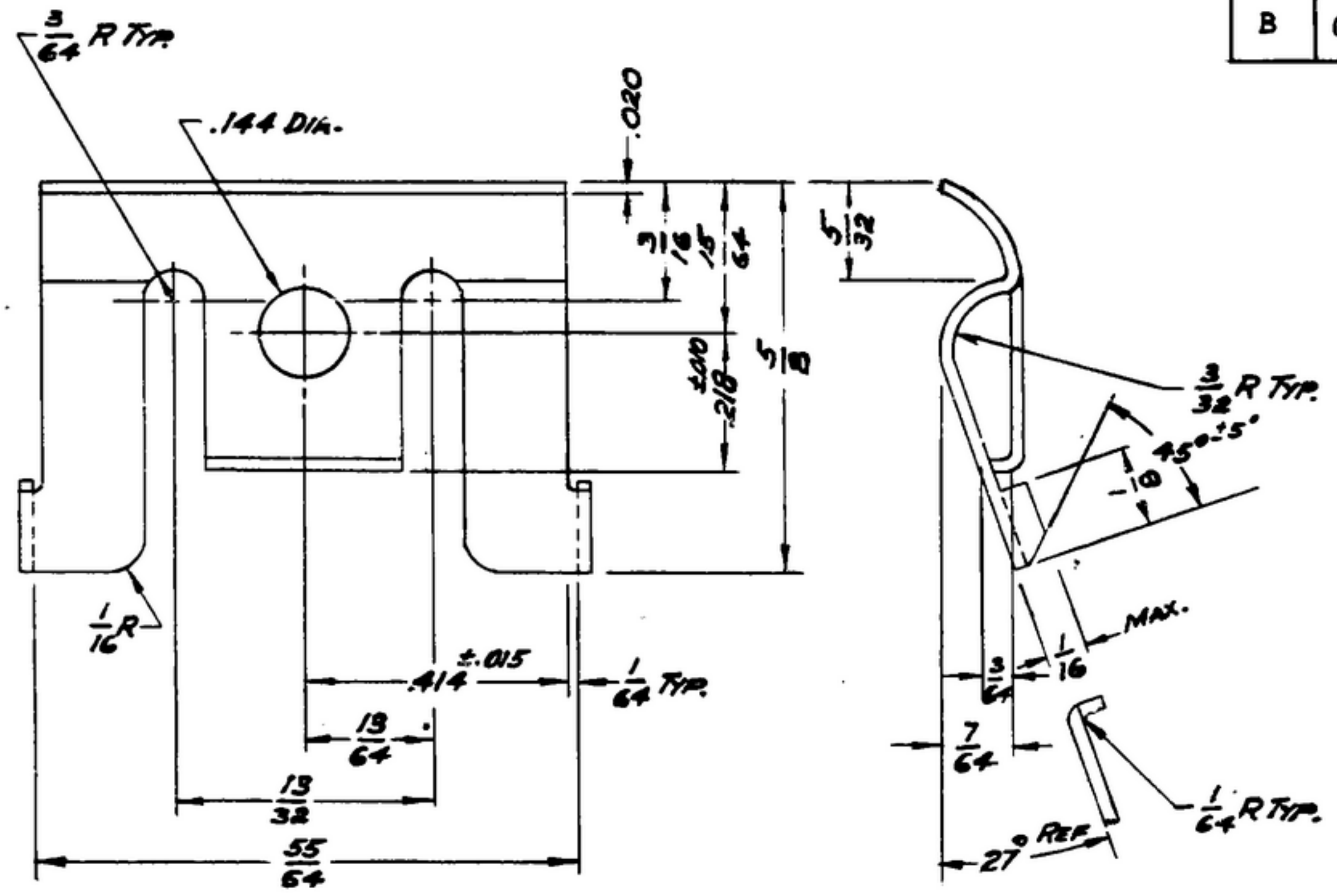


R-341516 1972
R-391-506-1973-000

NOTICE: When Government drawings, specifications, or other data are used for any purpose other than in connection with a definitely related Government procurement operation, the United States Government thereby incurs no responsibility or any obligation whatsoever; and the fact that the Government may have furnished, furnished, or in any way supplied the said drawings, specifications, or other data is not to be regarded by implication or otherwise as in any manner licensing the holder or any other person or corporation, or conveying any rights or permission to manufacture, use or sell any patented invention that may in any way be related thereto.

SM-C-179040	SC-DL-178467	SWE * APPROVAL	SYN	REVISIONS	DESCRIPTION	DATE	APPROVAL
SM-C-343607	SC-DL-248775	S Y M	AR 100722	A ₂	A ₁ -QQ-P-330 WAS QQ-B-746. A ₂ -ADDED APPL. SM-C-343607, SM-C-249149, SC-DL-248775.	1 OCT. 59	42428-PC-59-A1-51 REV'D. PME
SM-C-249149				B	(1) ADDED NOTE 3 FINISH	31 OCT 61	42428-PC-59 REV'D PME



NOTES:

(A₁)

1. PHOSPHOR BRONZE, COMPOSITION A, 1/2 HARD, PER SPEC QQ-P-330.
2. - PART MUST BE FREE OF BURRS & SHARP EDGES.
3. FINISH: CHEMICAL POLISH PER IRIDITE #7 METCOTE PROCESS BY ALLIED RESEARCH PRODUCTS INC., BALTIMORE, MD., OR EQUAL.

(B₁)

NOTE:

*FOR INFORMATION ONLY, CONTRACTOR MAY AT HIS OPTION DEVIATE FROM THESE PROCESS DETAILS

UNLESS OTHERWISE SPECIFIED	AUTHENTICATION	CLAMP	DEPARTMENT OF THE ARMY
DIMENSIONS ARE IN INCHES	DRAWN 21852 TH 50-93	CLAMP	SIGNAL CORPS ENGINEERING LABORATORIES FORT MONMOUTH NEW JERSEY
TOLERANCES ON FRACTIONS ± 1/64	TRACED PHOTO		
DECIMALS ± .005	CHECKED K		
ANGLES ±	VERIFIED P.D.B.R.		
COMMERCIAL TOLERANCES APPLY TO STOCK SIZES	APPROVED P.D.B.R.		
ALL SURFACES ✓	REVIEWED PME DATE 7 July 53		
	SCALE 1/1	FINISH	SM-B-179042