

R. H. 0-4

DR 1.8 HR.

505-9625-042

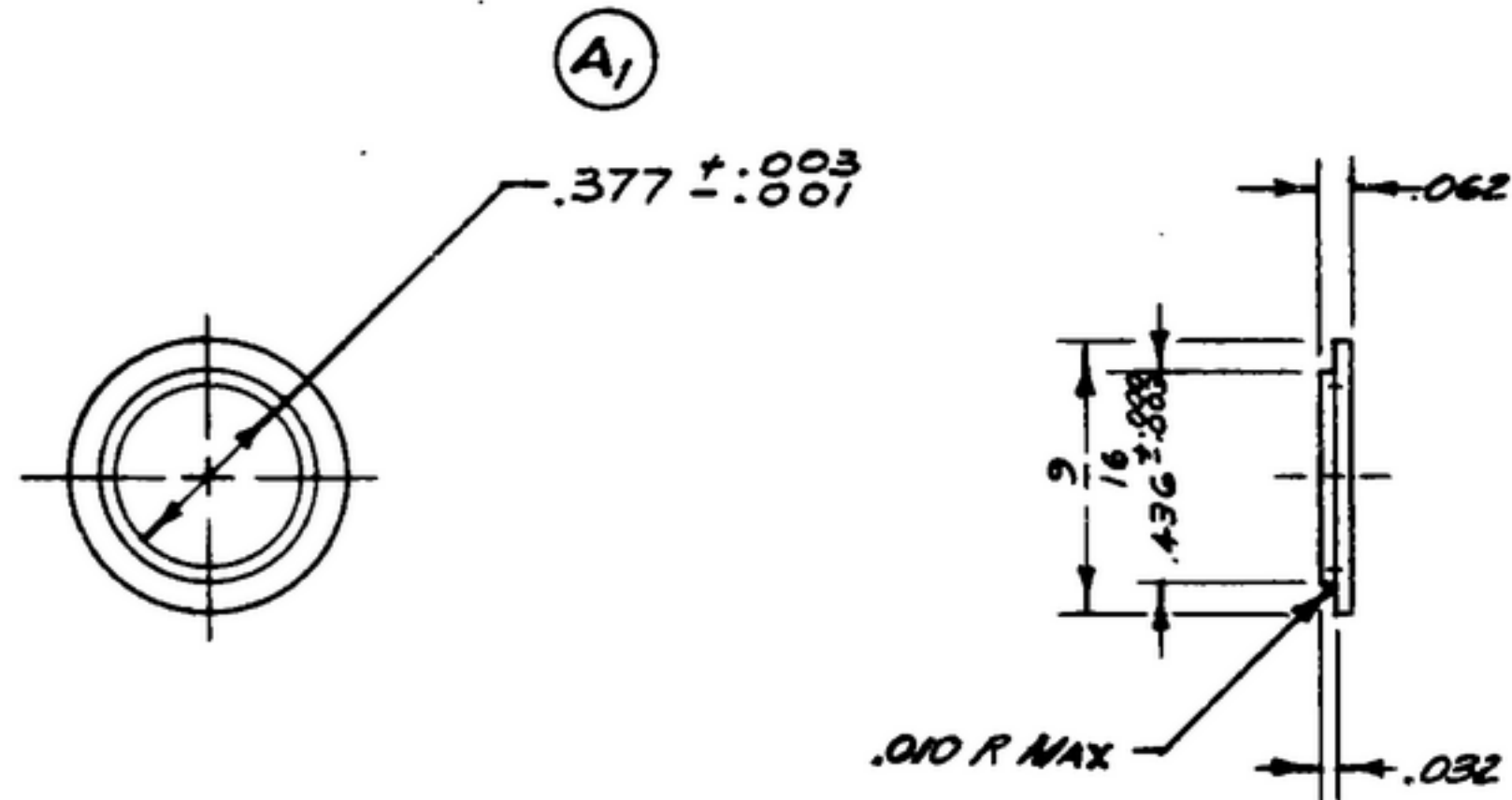
NOTICE: When Government drawings, specifications, or other data are used for any purpose other than in connection with a definitely related Government procurement operation, the United States Government thereby incurs no responsibility or any obligation whatsoever, and the fact that the Government may have furnished, furnished, or in any way supplied the said drawings, specifications, or other data is not to be regarded by implication or otherwise as in any manner licensing the holder or any other person or corporation, or conveying any rights or permission to manufacture, use or sell any patented invention that may in any way be related thereto.

**NOTE**

FOR INFORMATION ONLY, CONTRACTOR MAY AT HIS OPTION DEVIATE FROM THESE PROCESS DETAILS

(A<sub>2</sub>)

NEXT ASSEMBLY	USED ON	SWE. * APPROVAL	SYMBOL	DESCRIPTION	DATE	APPROVAL
SM-C-179051	SC-DL-178467	S Y M 10042-2	A <sub>2</sub>	A <sub>1</sub> - .377 ± .003 WAS .337 ± .003;	1 OCT. 59	42428-PC-59-A1-51 REV'D. PME
SM-C-179049	SC-DL-178467			A <sub>2</sub> - ADDED APPL. SM-C-248962, SC-DL-248775		
SM-C-248962	SC-DL-248775	CA B 85/29	B	B <sub>1</sub> - SPEC. MIL-P-79 AND CLASSIFICATION WAS PLASTIC, TYPE (PBE-P) PER SPEC. MIL-P-315	5 APRIL 61	42428-PC-59 REV'D PME



(B<sub>1</sub>)

PLASTIC-MATERIAL, LAMINATED PAPER-BASE, PHENOLIC-RESIN ROD PER SPEC, MIL-P-79, FORM R, TYPE PBE.

UNLESS OTHERWISE SPECIFIED  DIMENSIONS ARE IN INCHES TOLERANCES ON FRACTIONS ± 1/64 DECIMALS ± .006 ANGLES ± —  COMMERCIAL TOLERANCES APPLY TO STOCK SIZES  ALL SURFACES ✓	AUTHENTICATION DRAWN 21852 - PW 50-93 TRACED PHOTO CHECKED <i>R</i> VERIFIED P.D.B.R. APPROVED P.D.B.R. REVIEWED PME DATE 23-APR-53	<h1>WASHER</h1>	DEPARTMENT OF THE ARMY SIGNAL CORPS ENGINEERING LABORATORIES FORT MONMOUTH NEW JERSEY
	SCALE 2/1 FINISH _____		