

EQUIP. TYPE *R-990A/URR* EXP. NO.

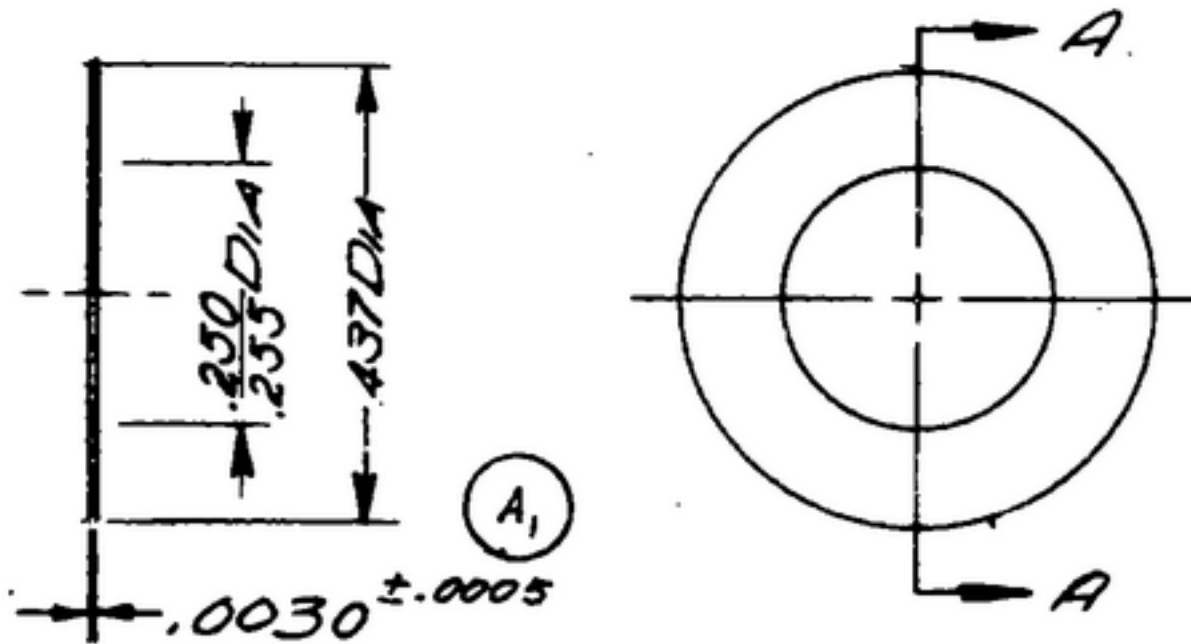
*COL 5001086003*

NOTICE: WHEN GOVERNMENT DRAWINGS, SPECIFICATIONS, OR OTHER DATA ARE USED FOR ANY PURPOSE OTHER THAN IN CONNECTION WITH A SPECIFICALLY RELATED GOVERNMENT PROCUREMENT OPERATION, THE USER STATES GOVERNMENT THEREBY ASSUMES NO RESPONSIBILITY FOR ANY OBLIGATION WHATSOEVER, AND THE FACT THAT THE GOVERNMENT MAY HAVE FORMULATED, PROVIDED, OR IN ANY WAY SUPPLIED THE SAID DRAWINGS, SPECIFICATIONS, OR OTHER DATA IS NOT TO BE CONSTRUED BY IMPLICATION OR OTHERWISE AS IN ANY MANNER LICENSES THE USER OR ANY OTHER PERSON OR CORPORATION, OR CONVEYS ANY RIGHTS OR PERMISSION TO MANUFACTURE, USE, OR SELL ANY PATENTED INVENTION THAT MAY IN ANY WAY BE RELATED THERETO.

THIS DOCUMENT HAS BEEN PURCHASED BY THE GOVERNMENT AND MAY BE REPRODUCED AND USED IN CONNECTION WITH ANY GOVERNMENT PROCUREMENT OR MAINTENANCE OPERATION.

\*FOR INFORMATION ONLY. CONTRACTOR MAY AT HIS OPTION DEVIATE FROM THESE PROCESS DETAILS.

REVISIONS			
SYM	DESCRIPTION	DATE	APPROVAL
<del>SYM</del> <i>PR10042-B</i>	<del>SWE APPROVAL</del>		
<i>A<sub>2</sub></i>	<i>A<sub>1</sub> ADDED TOL. A<sub>2</sub> ADDED APPL. SM-D-343600</i>	<i>9 OCT 59</i>	<i>43423-PC-58 REF'D PME</i>



SECTION A-A

BRASS, COMP. 1, TEMPER 1/2 H, PER SPEC QQ-B-613.

GOLLINS PART NO.	ITEM	REQD	PART NO.	DESCRIPTION	MATL	MATL SPEC
LIST OF MATERIAL						
GOLLINS PART NO. <i>558 0045002</i>						

DRAWN <i>R CHILL</i>		CHECKED <i>PC</i>	APPROVED	GOLLINS RADIO CO. CEDAR RAPIDS, IOWA <i>14214-PH-51-93</i>	<i>WASHER</i>	DEPARTMENT OF THE ARMY SIGNAL CORPS ENGINEERING LABORATORIES  FORT MONMOUTH NEW JERSEY  <i>SM-B-24882A</i>
UNLESS OTHERWISE SPECIFIED: DECIMAL DIMENSIONS INCLUDING HOLE SIZES MAY VARY ±.008 FRACTIONAL DIMENSIONS INCLUDING HOLE SIZES MAY VARY ±1/64 MACHINED ANGLES MAY VARY ±1° SHEARED ANGLES MAY VARY ±.25° BROKEN ANGLES MAY VARY ±1° ECCENTRICITY BETWEEN ANY DIAMETERS ON THE SAME CENTERLINE SHALL NOT EXCEED .010 TOTAL INDICATOR READING. ALL DIMENSIONS ARE FINISH DIMENSIONS INCLUDING APPLIED FINISH AND ARE GIVEN IN INCHES.				SIGNAL CORPS		
APPLICATION				REVIEWED <i>PME</i>		
558 0324 004 <i>10</i> <i>SM-D-248975</i>				APPROVED <i>HLV</i> <i>PME</i>		
558 0325 004 <i>3</i> <i>SM-D-249007</i> <i>SC-DL-248775</i>				DATE <i>2 DEC 55</i> SCALE <i>4/1</i>		
GOLLINS NO. <i>QTY</i> NEXT ASSY USED ON						