

EQUIP. TYPE F390A/URR EXP. NO.

COL 500 5006 001

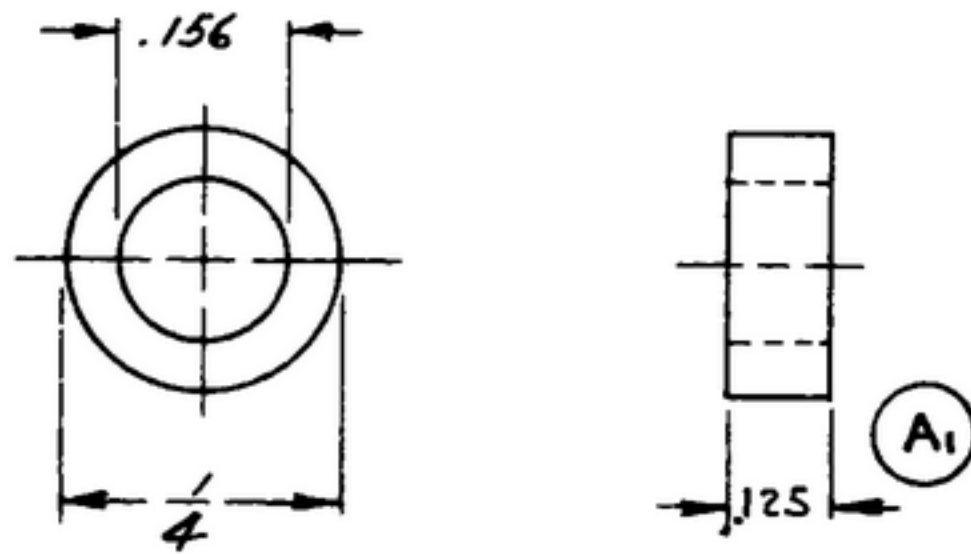
NOTICE: WHEN GOVERNMENT DRAWINGS, SPECIFICATIONS, OR OTHER DATA ARE USED FOR ANY PURPOSE OTHER THAN IN CONNECTION WITH A DEFINITELY RELATED GOVERNMENT PROCUREMENT OPERATION, THE UNITED STATES GOVERNMENT THEREBY INCURS NO RESPONSIBILITY FOR ANY OBLIGATION WHATSOEVER, AND THE FACT THAT THE GOVERNMENT MAY HAVE FORMULATED, FURNISHED, OR IN ANY WAY SUPPLIED THE SAID DRAWINGS, SPECIFICATIONS, OR OTHER DATA IS NOT TO BE REGARDED BY IMPLICATION OR OTHERWISE AS IN ANY MANNER LICENSING THE HOLDER OR ANY OTHER PERSON OR CORPORATION, OR CONVEYING ANY RIGHTS OR PERMISSION TO MANUFACTURE, USE, OR SELL ANY PATENTED INVENTION THAT MAY IN ANY WAY BE RELATED THERETO.

THIS DOCUMENT HAS BEEN PURCHASED BY THE GOVERNMENT AND MAY BE REPRODUCED AND USED IN CONNECTION WITH ANY GOVERNMENT PROCUREMENT OR MAINTENANCE OPERATION.

* FOR INFORMATION ONLY, CONTRACTOR MAY AT HIS OPTION DEVIATE FROM THESE PROCESS DETAILS.

~~SWE APPROVAL~~
SYM PR10042-6

REVISIONS			
SYM	DESCRIPTION	DATE	APPROVAL
A ₃	A ₁ WAS .093 A ₂ WAS A COMMERCIAL TYPE FINISH A ₃ RENUMBERED THE NOTES	15 OCT 59	42428-PC S9-A1-S1 REV'D PME



A₃

NOTES

- 1 TUBING, BRASS, GRADE 1, TYPE A, PER SPEC WW-T-791.
2. FINISH: M 262 PER MIL-F-14072 (A₂)
3. PARTS MUST BE FREE OF BURRS & SHARP EDGES

COLLINS PART NO.	ITEM	QTY	PART NO.	DESCRIPTION	MATL.	NATL SPEC
LIST OF MATERIAL						
COLLINS PART NO. <u>558 0049 002</u>						

DRAWN <i>Mml</i>			CHECKED <i>RA</i>			APPROVED			COLLINS RADIO 60 GEBAR RAPIDS-10WA <u>14214-PH-51-93</u>			SLEEVE			DEPARTMENT OF THE ARMY SIGNAL CORPS ENGINEERING LABORATORIES FORT MONMOUTH NEW JERSEY <u>SM-B-248826</u>		
UNLESS OTHERWISE SPECIFIED: DECIMAL DIMENSIONS INCLUDING HOLE SIZES MAY VARY ±.005 FRACTIONAL DIMENSIONS INCLUDING HOLE SIZES MAY VARY ±1/64 MACHINED ANGLES MAY VARY ±.1° SHEARED ANGLES MAY VARY ±.25° BROKEN ANGLES MAY VARY ±1.° ECCENTRICITY BETWEEN ANY DIAMETERS ON THE SAME CENTERLINE SHALL NOT EXCEED .010 TOTAL INDICATOR READING. ALL DIMENSIONS ARE FINISH DIMENSIONS INCLUDING APPLIED FINISH AND ARE GIVEN IN INCHES.									SIGNAL CORPS								
									REVIEWED <i>PME</i>								
									APPROVED <i>HLV</i> <i>PME</i>								
558-0340-001-4			SM-D-248801			SC-DL-248775			DATE <u>2 DEC 55</u>			SCALE <u>4/1</u>					
COLLINS NO.			QTY			NEXT ASSY			USED ON			APPLICATION					