

EQUIP. TYPE R3904/LRR EXP. NO.

~~SOL. 506-1772-001~~

NOTICE: WHEN GOVERNMENT DRAWINGS, SPECIFICATIONS, OR OTHER DATA ARE USED FOR ANY PURPOSE OTHER THAN IN CONNECTION WITH A DEFINITELY RELATED GOVERNMENT PROCUREMENT OPERATION, THE UNITED STATES GOVERNMENT THEREBY ASSUMES NO RESPONSIBILITY FOR ANY OBLIGATION WHATSOEVER, AND THE FACT THAT THE GOVERNMENT MAY HAVE FORMULATED, FURNISHED, OR IN ANY WAY SUPPLIED THE SAID DRAWINGS, SPECIFICATIONS, OR OTHER DATA IS NOT TO BE REGARDED BY IMPLICATION OR OTHERWISE AS IN ANY MANNER LICENSING THE USER OR ANY OTHER PERSON OR CORPORATION, OR CONFERRING ANY RIGHTS OR PERMISSION TO MANUFACTURE, USE, OR SELL ANY PATENTED INVENTION THAT MAY IN ANY WAY BE RELATED THERETO.

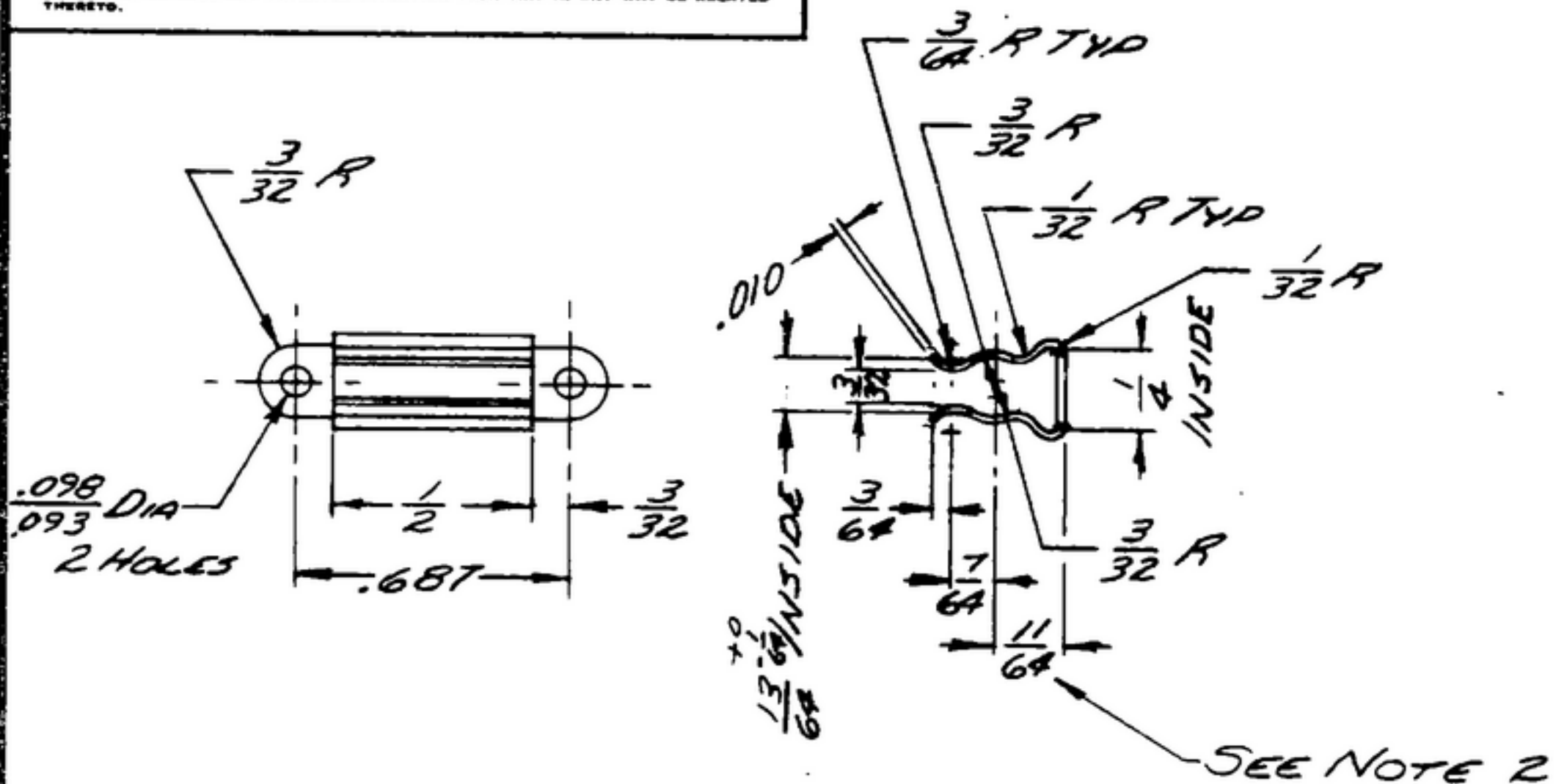
THIS DOCUMENT HAS BEEN PURCHASED BY THE GOVERNMENT AND MAY BE REPRODUCED AND USED IN CONNECTION WITH ANY GOVERNMENT PROCUREMENT OR MAINTENANCE OPERATION.

* FOR INFORMATION ONLY. CONTRACTOR MAY AT HIS OPTION DEVIATE FROM THESE PROCESS DETAILS.

REVISIONS

SYM	DESCRIPTION	DATE	APPROVAL
A	A.-WAS A COMMERCIAL FINISH	2 MAR. 60	REFD PME

W.S.W.E. APPROVAL
 SYM PR 10042
 A C.A. 84703



NOTES:

- PART MAY BE SUPPLIED LEWIS SPRING CO, CHICAGO, ILL, OR EQUAL, PROVIDED IT MEETS THE FOLLOWING REQUIREMENTS & DIMENSIONS SHOWN. PART IS MODIFIED BY ADDING FINISH.
 - ALL DIMENSIONS SHOWN ARE FOR REFERENCE ONLY.
- (A) MATERIAL: BERYLLIUM COPPER HEAT TREATED TO 75 ON ROCKWELL 15N SCALE.
 FINISH: M351 PER SPEC. MIL-F-14072

COLLINS PART NO.	ITEM	REQD	PART NO.	DESCRIPTION	MATL	MATL SPEC
139-0400-00		1		CLIP		

LIST OF MATERIAL COLLINS PART NO. 558-0095-002

DRAWN <i>RAW</i>		CHECKED <i>Ch</i>	APPROVED	COLLINS-RADIO CO. -CEDAR RAPIDS, IOWA- 14214-PH- 51-93	CLIP	DEPARTMENT OF THE ARMY SIGNAL CORPS ENGINEERING LABORATORIES FORT MONMOUTH NEW JERSEY
UNLESS OTHERWISE SPECIFIED: DECIMAL DIMENSIONS INCLUDING HOLE SIZES MAY VARY ±.008 FRACTIONAL DIMENSIONS INCLUDING HOLE SIZES MAY VARY ±1/64 MACHINED ANGLES MAY VARY ±.1° SHEARED ANGLES MAY VARY ±.25° BROKEN ANGLES MAY VARY ±.1° ECCENTRICITY BETWEEN ANY DIAMETERS ON THE SAME CENTERLINE SHALL NOT EXCEED .010 TOTAL INDICATOR READING. ALL DIMENSIONS ARE FINISH DIMENSIONS INCLUDING APPLIED FINISH AND ARE GIVEN IN INCHES.			SIGNAL CORPS			
			REVIEWED <i>PME</i>			
			APPROVED <i>HLV</i> <i>PME</i>			
APPLICATION				DATE <i>25 MAR 56</i>	SCALE <i>2/1</i>	SM-B-248844