

EQUIP. TYPE *R390A/URR* EXP. NO.

COL 566-1958-002

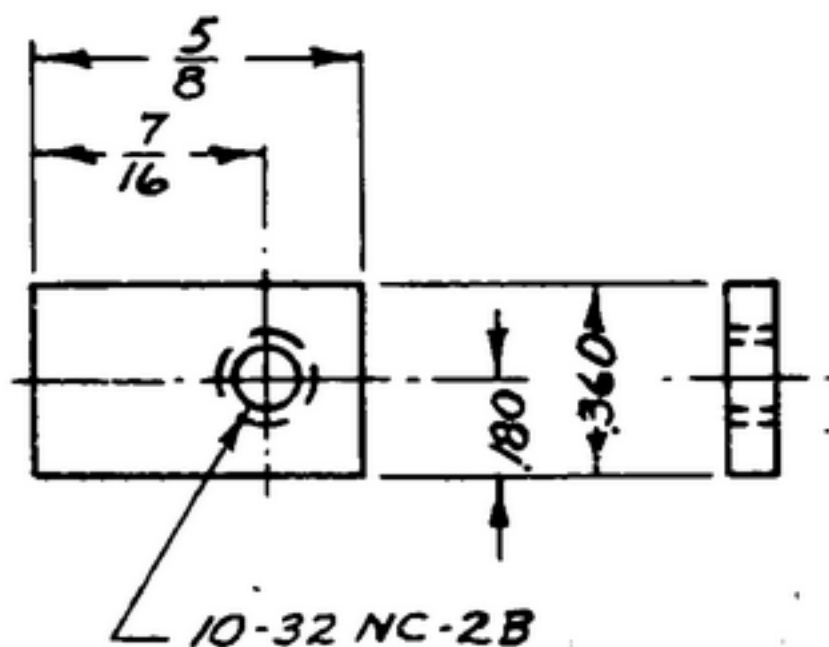
NOTICE: WHEN GOVERNMENT DRAWINGS, SPECIFICATIONS, OR OTHER DATA ARE USED FOR ANY PURPOSE OTHER THAN IN CONNECTION WITH A SPECIFICALLY RELATED GOVERNMENT PROCUREMENT OPERATION, THE UNITED STATES GOVERNMENT THEREBY INCURS NO RESPONSIBILITY FOR ANY OBLIGATION WHATSOEVER, AND THE FACT THAT THE GOVERNMENT MAY HAVE FORMULATED, FURNISHED, OR IN ANY WAY SUPPLIED THE SAID DRAWINGS, SPECIFICATIONS, OR OTHER DATA IS NOT TO BE REGARDED AS IMPLICATION OR ENDORSEMENT AS IN ANY MANNER LICENSES THE HOLDER OR ANY OTHER PERSON OR CORPORATION, OR CONVEYING ANY RIGHTS OR PERMISSION TO MANUFACTURE, USE, OR SELL ANY PATENTED INVENTION THAT MAY IN ANY WAY BE RELATED THERETO.

THIS DOCUMENT HAS BEEN PURCHASED BY THE GOVERNMENT AND MAY BE REPRODUCED AND USED IN CONNECTION WITH ANY GOVERNMENT PROCUREMENT OR CONTRACT OPERATION.

* FOR INFORMATION ONLY. CONTRACTOR MAY AT HIS OPTION DEVIATE FROM THESE PROCESS DETAILS.

REVISIONS

| SYM | DESCRIPTION | DATE | APPROVAL |
|-----|-------------|------|----------|
|-----|-------------|------|----------|



CRS, COMP 302, COND ANNEALED, PER SPEC MIL-5-5059, .078 THICK

FINISH: E300 PER SPEC MIL-F-14072

** COLLINS 558-0163-002*

NOTES:

- 1. ALL SCREW THREADS PER BUREAU OF STANDARDS HANDBOOK H28.*

| COLLINS PART NO. | REV | ISS | PART NO. | DESCRIPTION | DATE | DATE SPEC |
|------------------|-----|-----|----------|-------------|------|--------------------------------------|
| LIST OF MATERIAL | | | | | | COLLINS PART NO. <i>558-0163-002</i> |

| | | | | | | | | | |
|--|--|--|--|---|---------------------------|----------|--|------------------|---|
| | | | | DRAWN <i>RDG</i> | CHECKED <i>Shelton</i> | APPROVED | COLLINS RADIO CO. -CEDAR RAPIDS, IOWA- <i>1421A-PH-51-93</i> | | NUT-DIAL LOCK DEPARTMENT OF THE ARMY SIGNAL CORPS ENGINEERING LABORATORIES FORT MONMOUTH NEW JERSEY <i>SM-B-248853</i> |
| | | | | UNLESS OTHERWISE SPECIFIED: DECIMAL DIMENSIONS INCLUDING HOLE SIZES MAY VARY ±.008 FRACTIONAL DIMENSIONS INCLUDING HOLE SIZES MAY VARY ±1/64 MACHINED ANGLES MAY VARY ±.1° SHEARED ANGLES MAY VARY ±.25° BROKEN ANGLES MAY VARY ±.1° ECCENTRICITY BETWEEN ANY DIAMETERS ON THE SAME CENTERLINE SHALL NOT EXCEED .010 TOTAL INDICATOR READING. ALL DIMENSIONS ARE FINISH DIMENSIONS INCLUDING APPLIED FINISH AND ARE GIVEN IN INCHES. | | | SIGNAL CORPS | | |
| | | | | | | | REVIEWED <i>PME</i> | | |
| | | | | | | | APPROVED <i>HLV</i> <i>PME</i> | | |
| | | | | | | | DATE <i>6 Dec 1955</i> | SCALE <i>2/1</i> | |