

EQUIP. TYPE R390A/URR EXP. NO.

COL-506-5941, 5950-003

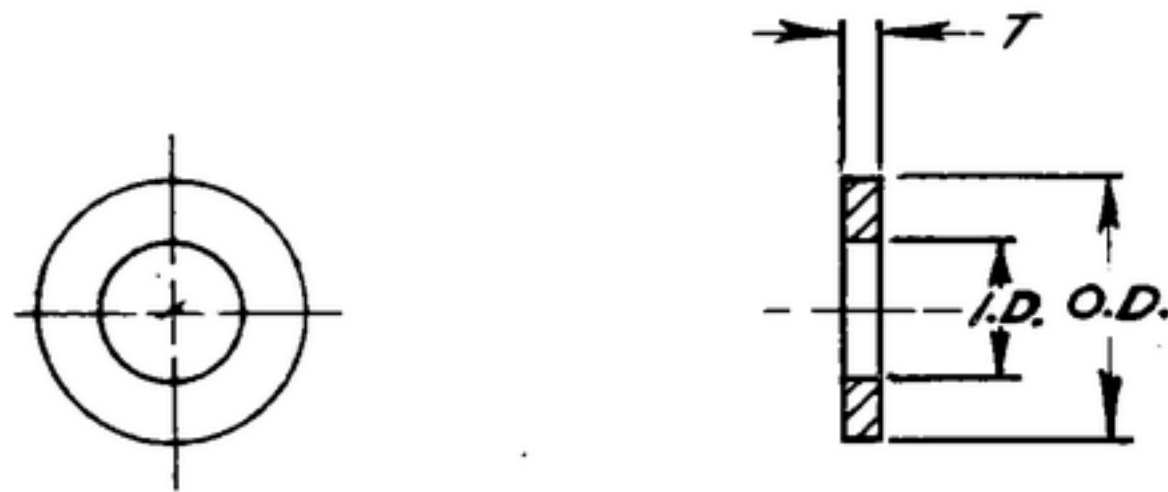
NOTICE: WHEN GOVERNMENT DRAWINGS, SPECIFICATIONS, OR OTHER DATA ARE USED FOR ANY PURPOSE OTHER THAN IN CONNECTION WITH A DEFINITELY RELATED GOVERNMENT PROCUREMENT OPERATION, THE UNITED STATES GOVERNMENT THEREBY INCURS NO RESPONSIBILITY FOR ANY OBLIGATION WHATSOEVER; AND THE FACT THAT THE GOVERNMENT MAY HAVE FORMULATED, FURNISHED, OR IN ANY WAY SUPPLIED THE SAID DRAWINGS, SPECIFICATIONS, OR OTHER DATA IS NOT TO BE REGARDED BY IMPLICATION OR OTHERWISE AS IN ANY MANNER LICENSING THE HOLDER OR ANY OTHER PERSON OR CORPORATION, OR CONVEYING ANY RIGHTS OR PERMISSION TO MANUFACTURE, USE, OR SELL ANY PATENTED INVENTION THAT MAY IN ANY WAY BE RELATED THERETO.

THIS DOCUMENT HAS BEEN PURCHASED BY THE GOVERNMENT AND MAY BE REPRODUCED AND USED IN CONNECTION WITH ANY GOVERNMENT PROCUREMENT OR MAINTENANCE OPERATION.

\* FOR INFORMATION ONLY. CONTRACTOR MAY AT HIS OPTION DEVIATE FROM THESE PROCESS DETAILS.

~~\*SWE APPROVAL~~  
~~SYM PR 10042-2~~

REVISIONS			
SYM	DESCRIPTION	DATE	APPROVAL
A <sub>1</sub>	A <sub>1</sub> - COMP 301 WAS 302	1 OCT. 59	42428-PC-59-A1-51 REV'D. PME



<del>COLLINS PART NUMBER</del>	<del>DASH NUMBER</del>	O.D.	I.D.	T.	MATERIAL	FINISH
<del>558 0193 002</del>	<del>SM-B-248858 -1</del>	.244	.125	.010	SEE NOTE 1	SEE NOTE 3
<del>558 0194 002</del>	<del>2</del>	.437	.313/.318	.005	SEE NOTE 2	

- (A) NOTES:
1. CRES, COMP 301, COND 1/2H, PER SPEC MIL-5-5059.
  2. BRASS, COMP. 1, COND. 1/2H, PER SPEC QQ-B-613
  3. FINISH: E300 PER SPEC. MIL-F-14072.  
\* COLLINS ~~580-0025-00~~
  4. PART MUST BE FREE OF BURRS & SHARP EDGES.
  5. PART MUST BE FLAT WITHIN .002 T.I.R.
  6. ALL DIAS. MUST BE CONCENTRIC WITHIN .005 T.I.R.

COLLINS PART NO.	ITEM	REQD.	PART NO.	DESCRIPTION	MATL.	MATL SPEC.
LIST OF MATERIAL						
COLLINS PART NO. <del>558 0193 002</del> <del>558 0194</del>						

DRAWN <i>R.E.B.</i>		CHECKED <i>[Signature]</i>		APPROVED		COLLINS-RADIO CO. CEDAR RAPIDS, IOWA 1A214-PH-51-93		WASHER  DEPARTMENT OF THE ARMY SIGNAL CORPS ENGINEERING LABORATORIES  FORT MONMOUTH NEW JERSEY  SM-B-248858	
UNLESS OTHERWISE SPECIFIED: DECIMAL DIMENSIONS INCLUDING HOLE SIZES MAY VARY ±.008 FRACTIONAL DIMENSIONS INCLUDING HOLE SIZES MAY VARY ±1/64 MACHINED ANGLES MAY VARY ±1° SHEARED ANGLES MAY VARY ±.25° BROKEN ANGLES MAY VARY ±1° ECCENTRICITY BETWEEN ANY DIAMETERS ON THE SAME CENTERLINE SHALL NOT EXCEED .010 TOTAL INDICATOR READING. ALL DIMENSIONS ARE FINISH DIMENSIONS INCLUDING APPLIED FINISH AND ARE GIVEN IN INCHES.						REVIEWED <i>PME</i>			
						APPROVED <i>HLV</i> <i>PME</i>			
APPLICATION						DATE 27 MAR '56			