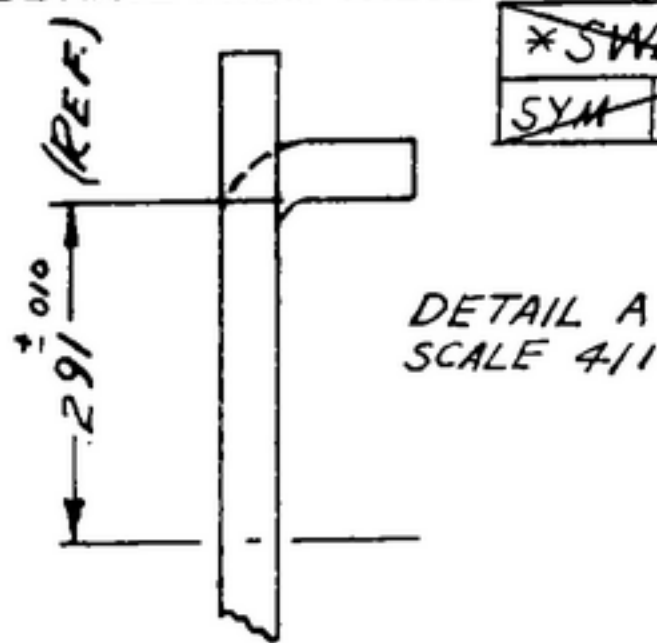
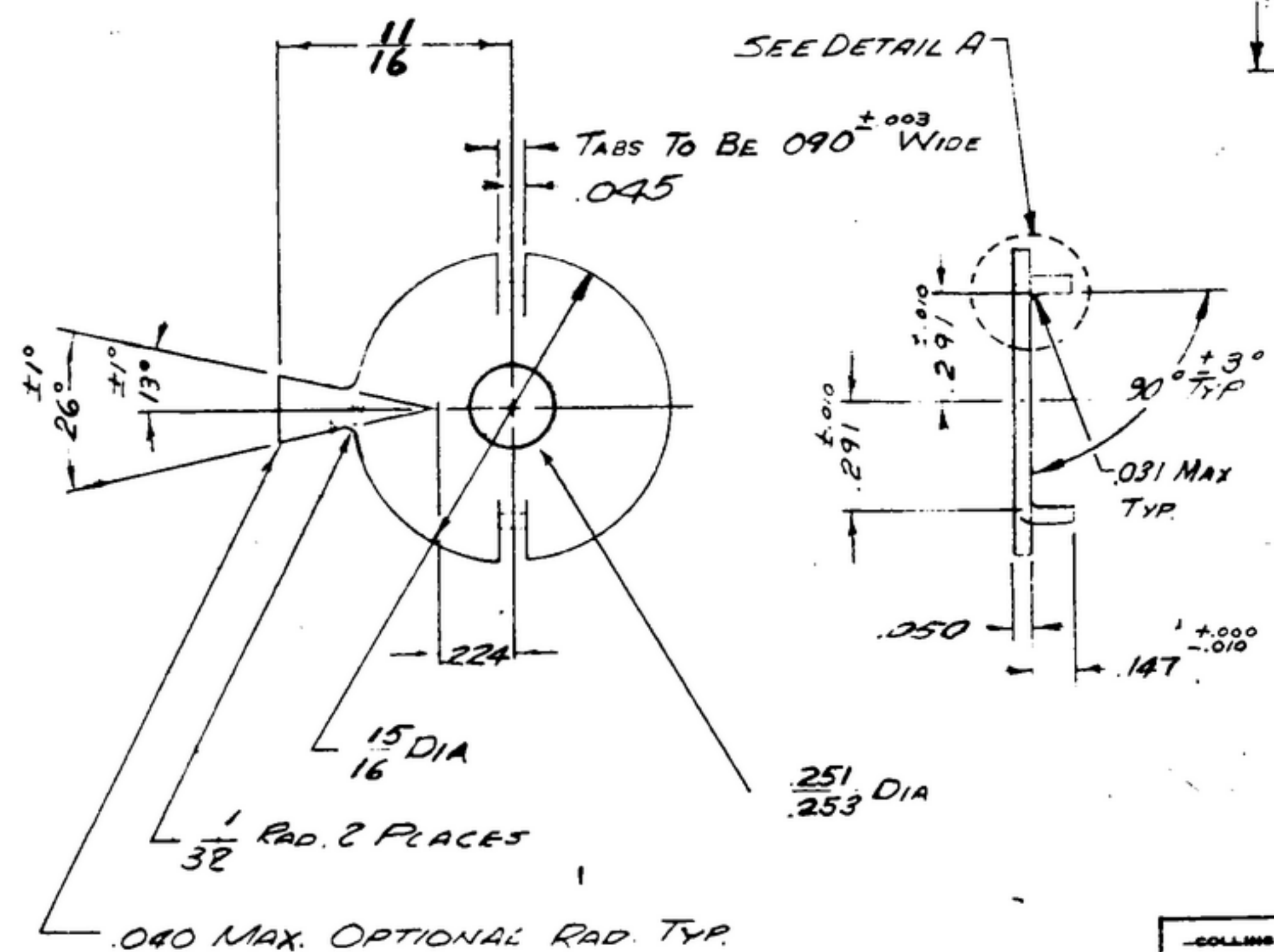


NOTICE: WHEN GOVERNMENT DRAWINGS, SPECIFICATIONS, OR OTHER DATA ARE USED FOR ANY PURPOSE OTHER THAN IN CONNECTION WITH A DEFINITELY RELATED GOVERNMENT PURCHASE, THE UNITED STATES GOVERNMENT THEREBY INCURS NO RESPONSIBILITY FOR ANY OBLIGATION WHATSOEVER, AND THE FACT THAT THE GOVERNMENT MAY HAVE FURNISHED OR MADE AVAILABLE SUCH DATA IN ANY WAY SUPPLIED BY THE GOVERNMENT MAY NOT BE CONSIDERED AS AN IMPLICATION OR OTHERWISE AS IN ANY MANNER LICENSING THE HOLDER OR ANY OTHER PERSON OR CORPORATION OR CONVEYING ANY RIGHTS OR PERMISSION TO MANUFACTURE OR USE OR SELL ANY PATENTED INVENTION THAT MAY IN ANY WAY BE RELATED THEREIN.

THIS DOCUMENT HAS BEEN PURCHASED BY THE GOVERNMENT AND MAY BE REPRODUCED AND USED IN CONNECTION WITH ANY GOVERNMENT PROCUREMENT OR MAINTENANCE OPERATION.

* FOR INFORMATION ONLY. CONTRACTOR MAY AT HIS OPTION DEVIATE FROM THESE PROCESS DETAILS.

REVISIONS			
SYM	DESCRIPTION	DATE	APPROVAL
A ₂	A ₁ -REVISED NOTES; A ₂ ADDED APPL SM-D-343598, SM-D-343597;	5 OCT 59	42428-PC-59 -A1-51 (REV?) PME



- NOTES: (A₁)
1. BERYLLIUM COPPER, COND A, PER SPEC QQ-C-533,
 2. FINISH: CHEMICAL POLISH PER IRIDITE[®] METCOTE PROCESS BY ALLIED RESEARCH PRODUCTS, INC., BALTIMORE, MD, OR EQUAL. (*SAME AS 572167)
~~*COLLINS 580 0034 00~~
 3. REMOVE ALL BURRS.
 4. PIECE MUST BE FLAT WITHIN .008 TOTAL INDICATOR READING.
 5. MATL. MUST BE IN THE ANNEALED STATE, POSSESSING A HARNESS OF 45 TO 78 ROCKWELL B PRIOR TO BLANKING. SOLUTION ANNEAL AFTER BLANKING. THEN LANCE AND FORM. FOLLOW AGAIN WITH A SOLUTION ANNEAL AND THEN HARDEN TO 26 TO 45 ROCKWELL C. IT IS EXTREMELY IMPORTANT THAT NO FRACTURE OCCURS IN THE BENT TANGS DURING THE FORMING OPERATION.

(* SAME AS 574956)

COLLINS PART NO.	ITEM	QTY	PART NO.	DESCRIPTION	MATL.	MATL. SPEC.
LIST OF MATERIAL						
COLLINS PART NO. 558 0217 002						

APPLICATION				DRAWN	CHECKED	APPROVED	COLLINS RADIO CO. 14214 PH 51-93	STOP-TUNING SHAFT	DEPARTMENT OF THE ARMY SIGNAL CORPS ENGINEERING LABORATORIES FORT MONMOUTH NEW JERSEY
SM-D-343598	SL-DL-248775			RDG	William		SIGNAL CORPS		
SM-D-343597						REVIEWED PME			
SM-C-248960						APPROVED HLY PME			
558 0309 003	SM-C-248960						DATE 7 DEC 1955	SCALE 2X	SM-B-248869
558 0310 003	SM-C-248961	SC-DL-248775							

UNLESS OTHERWISE SPECIFIED:
 DECIMAL DIMENSIONS INCLUDING HOLE SIZES MAY VARY ± .005
 FRACTIONAL DIMENSIONS INCLUDING HOLE SIZES MAY VARY ± .004
 MACHINED ANGLES MAY VARY ± 1'
 SHEARED ANGLES MAY VARY ± .25
 BROKEN ANGLES MAY VARY ± 1'
 ECCENTRICITY BETWEEN ANY DIAMETERS ON THE SAME CENTER LINE SHALL NOT EXCEED .010 TOTAL INDICATOR READING
 ALL DIMENSIONS ARE FINISH DIMENSIONS INCLUDING APPLICABLE FINISH AND ARE GIVEN IN INCHES

WHEN REFERRING TO THIS DRAWING STATE DRAWING NO., APPLICABLE ISSUE SYMBOL, IF ANY, AND DATE.