

EQUIP. TYPE *R890A/URR* ESP. NO.

COL. 540 7452 002

NOTE: WHEN GOVERNMENT DRAWINGS, SPECIFICATIONS, OR OTHER DATA ARE USED FOR ANY PURPOSE OTHER THAN IN CONNECTION WITH A SPECIFICALLY RELATED GOVERNMENT PURCHASE OR OPERATION, THE UNITED STATES GOVERNMENT THEREBY ASSUMES NO RESPONSIBILITY FOR ANY CALIBRATION SHORTAGES, AND THE FACT THAT THE GOVERNMENT MAY HAVE FORMULATED, PROVIDED, OR IN ANY WAY SUPPLIED THE SAID DRAWINGS, SPECIFICATIONS, OR OTHER DATA IS NOT TO BE REGARDED BY REPLACEMENT OR OTHERWISE AS IN ANY MANNER LIMITING THE RIGHTS OF ANY OTHER PERSON OR CORPORATION, OR CONVEYING ANY RIGHTS OR OBLIGATIONS TO INVENTION, PATENT, OR TO HOLD ANY PATENTED INVENTION THAT MAY IN ANY WAY BE RELATED THERETO.

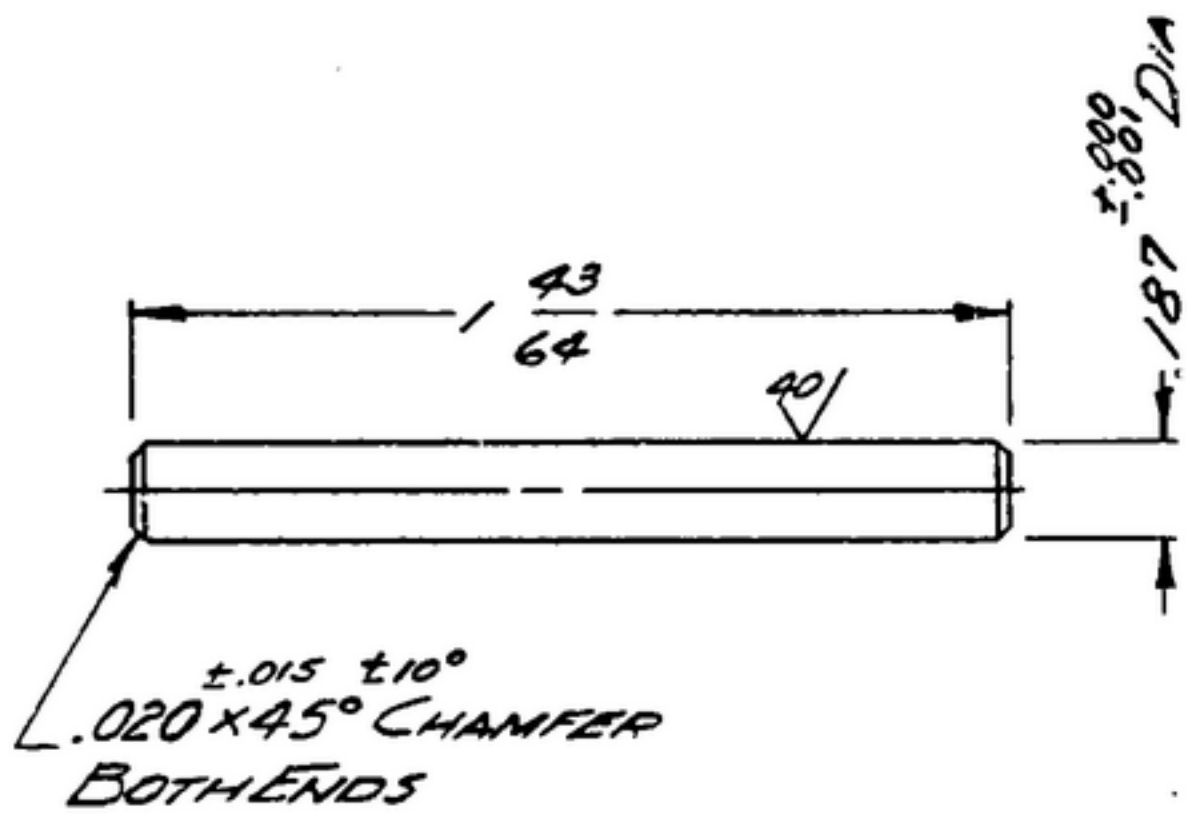
THIS EQUIPMENT HAS BEEN PURCHASED BY THE GOVERNMENT AND MAY BE SUPERSEDED AND USED IN CONNECTION WITH ANY GOVERNMENT PURCHASE OR MAINTENANCE OPERATION.

* FOR INFORMATION ONLY, CONTRACTOR MAY AT HIS OPTION DEVIATE FROM THESE PROCESS DETAILS.

REVISIONS			
SYM	DESCRIPTION	DATE	APPROVAL

*CR5, COMP. 3035, COND. B, PER SPEC. MIL-S-7720, SURFACE COND. d,
FINISH: E300 PER SPEC MIL-F-14072.
* ~~COLLINS 580 0025 00.~~*

NOTES:
1. SHAFT SHALL BE STRAIGHT WITHIN .010 T.I.R.
2. CUTOFF BURR PERMISSABLE.



COLLINS PART NO.	ITEM	QTY	PART NO.	DESCRIPTION	MATL	MATL SPEC
LIST OF MATERIAL						
COLLINS PART NO. <i>558 0240 002</i>						

COLLINS NO.	QTY	NEXT ASBY	USED ON
<i>558 0288 002</i>	<i>1</i>	<i>SM-B-248891</i>	
<i>558 0292 002</i>	<i>1</i>	<i>SM-B-248943 SC-DL-248775</i>	

DRAWN *R.B.E.* CHECKED *[Signature]* APPROVED

UNLESS OTHERWISE SPECIFIED:
DECIMAL DIMENSIONS INCLUDING HOLE SIZES MAY VARY ±.008
FRACTIONAL DIMENSIONS INCLUDING HOLE SIZES MAY VARY ±1/64
MACHINED ANGLES MAY VARY ±1°
BREADED ANGLES MAY VARY ±25°
BROKEN ANGLES MAY VARY ±1°
ECCENTRICITY BETWEEN ANY DIAMETERS ON THE SAME CENTERLINE SHALL NOT EXCEED .010 TOTAL INDICATOR READING.
ALL DIMENSIONS ARE FINISH DIMENSIONS INCLUDING APPLIED FINISH AND ARE GIVEN IN INCHES.

COLLINS R. 810 CO.
CORPORATION
14214-PH-57-93

SIGNAL CORPS

REVIEWED *PME*

APPROVED *HLV*
PME

DATE *8 DEC '55* SCALE *2/1*

DEPARTMENT OF THE ARMY
SIGNAL CORPS ENGINEERING
LABORATORIES

FORT MONMOUTH NEW JERSEY

SM-B-248891