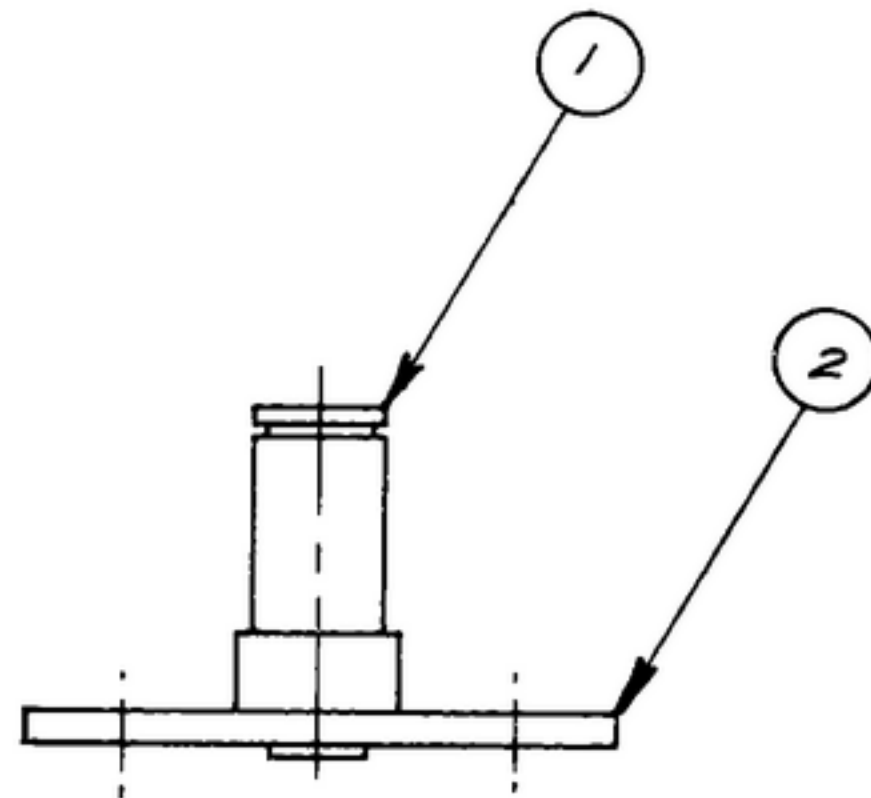


NOTICE: WHEN GOVERNMENT DRAWINGS, SPECIFICATIONS, OR OTHER DATA ARE USED FOR ANY PURPOSE OTHER THAN IN CONNECTION WITH A SPECIFICALLY RELATED GOVERNMENT PROCUREMENT OPERATION, THE UNITED STATES GOVERNMENT THEREBY INCURS NO RESPONSIBILITY FOR ANY CALCULATION, INTERPRETATION, AND THE FACT THAT THE GOVERNMENT MAY HAVE FORMULATED, PROVIDED, OR IN ANY WAY SUPPLIED THE SAID DRAWINGS, SPECIFICATIONS, OR OTHER DATA IS NOT TO BE REGARDED BY REPLICATION OR OTHERWISE AS IN ANY MANNER LIMITING THE RIGHTS OF ANY OTHER PERSON OR ORGANIZATION, OR CONVEYING ANY RIGHTS OR PERMISSION TO REPRODUCE, USE, OR SELL ANY PATENTED INVENTION THAT MAY IN ANY WAY BE RELATED THERETO.

THIS DOCUMENT HAS BEEN PURCHASED BY THE GOVERNMENT AND MAY BE REPRODUCED AND USED IN CONNECTION WITH ANY GOVERNMENT PROCUREMENT OR MAINTENANCE OPERATION.

* FOR INFORMATION ONLY. CONTRACTOR MAY AT HIS OPTION DEVIATE FROM THESE PROCESS DETAILS.

REVISIONS			
SYM	DESCRIPTION	DATE	APPROVAL



NOTES:

1. STAKE POST (1) TO PLATE (2) WITH C'SUNK SIDE NEXT TO POST.

COLLINS PART NO.	QTY	REQD	PART NO.	DESCRIPTION	MATL	MATL SPEC
<i>558 0266 002</i>	<i>2</i>	<i>1</i>	<i>SM-B-248917</i>	<i>PLATE - ADJ.</i>		
<i>558 0265 002</i>	<i>1</i>	<i>1</i>	<i>SM-B-248916</i>	<i>POST - GEAR</i>		

LIST OF MATERIAL

-COLLINS PART NO. *558 0290 002*

COLLINS NO.	QTY	NEXT ASSY	USED ON
<i>SM-D-343600</i>			
<i>558 0324 004</i>	<i>1</i>	<i>SM-D-248975</i>	<i>SC-DL-248975</i>

APPLICATION

DRAWN *R.E.B.* CHECKED *R.E.B.* APPROVED

UNLESS OTHERWISE SPECIFIED:
 DECIMAL DIMENSIONS INCLUDING HOLE SIZES MAY VARY ±.008
 FRACTIONAL DIMENSIONS INCLUDING HOLE SIZES MAY VARY ±1/64
 MACHINED ANGLES MAY VARY ±.1°
 SHEARED ANGLES MAY VARY ±.25°
 BROKEN ANGLES MAY VARY ±.1°
 ECCENTRICITY BETWEEN ANY DIAMETERS ON THE SAME CENTERLINE SHALL NOT EXCEED .010 TOTAL INDICATOR READING.
 ALL DIMENSIONS ARE FINISH DIMENSIONS INCLUDING APPLIED FINISH AND ARE GIVEN IN INCHES.

-COLLINS RADIO CO.
 -GEAR RAFFES-1874-
 14214-PH-51-93

SIGNAL CORPS
 REVIEWED *PME*
 APPROVED *HLV*
PME

DATE *6 DEC '55* SCALE *2/1*

POST ASSY - GEAR

DEPARTMENT OF THE ARMY
 SIGNAL CORPS ENGINEERING
 LABORATORIES

FORT MONMOUTH NEW JERSEY

SM-B-248941