

EQUIP. TYPE *R-390A/URR* EXP. NO. _____

COL. 5407062-002

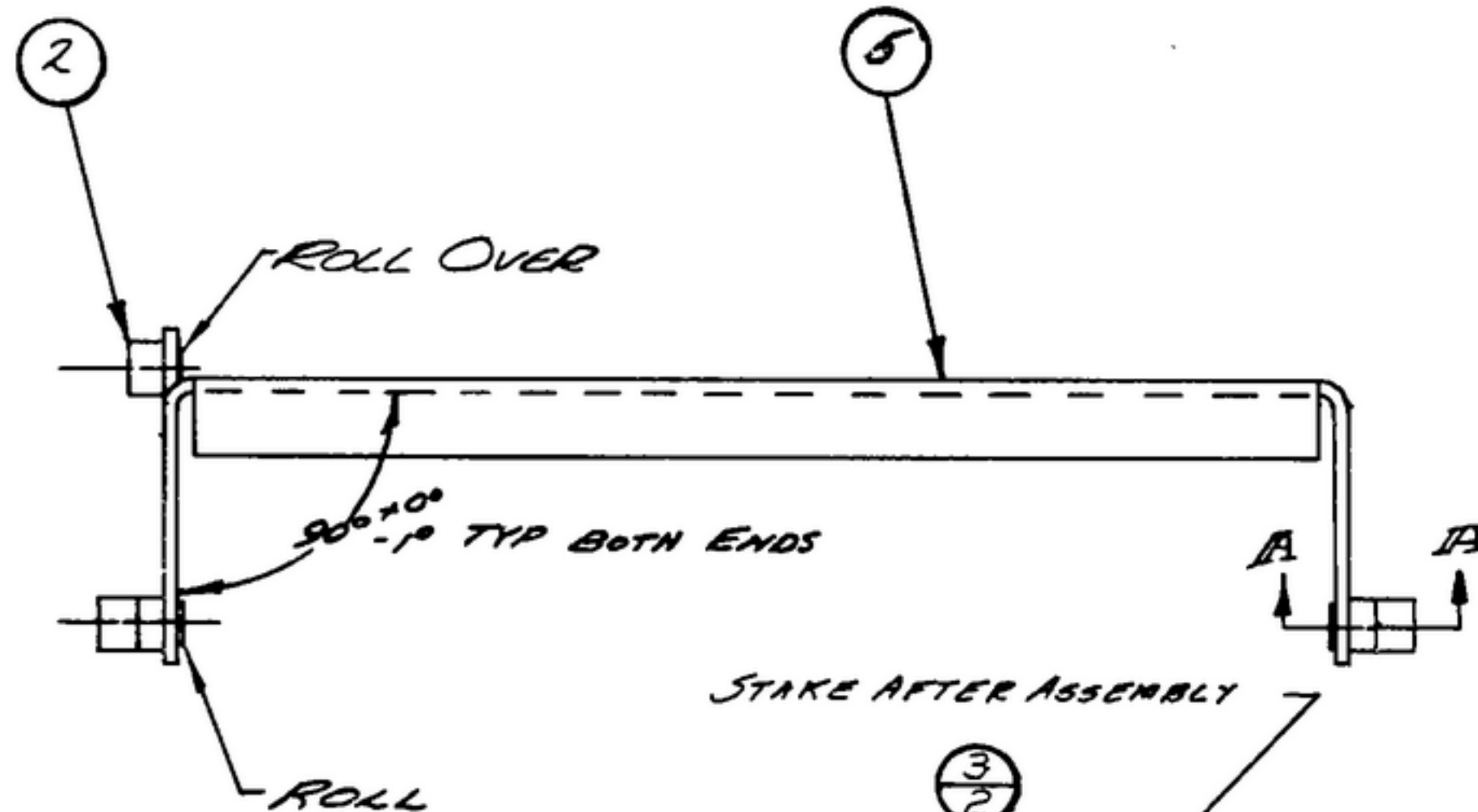
NOTICE: WHEN GOVERNMENT DRAWINGS, SPECIFICATIONS, OR OTHER DATA ARE USED FOR ANY PURPOSE OTHER THAN IN CONNECTION WITH A DEFINITELY RELATED GOVERNMENT PROCUREMENT OPERATION, THE UNITED STATES GOVERNMENT THEREBY INCURS NO RESPONSIBILITY FOR ANY OBLIGATION WHATSOEVER, AND THE FACT THAT THE GOVERNMENT MAY HAVE FORMULATED, PROVIDED, OR IN ANY WAY SUPPLIED THE SAID DRAWINGS, SPECIFICATIONS, OR OTHER DATA IS NOT TO BE REGARDED BY REPLICATION OR OTHERWISE AS IN ANY MANNER LICENSES THE HOLDER OR ANY OTHER PERSON OR CORPORATION, OR CONFERSING ANY RIGHTS OR PRIVILEGES TO REPRODUCE, TRANSMIT, OR SELL ANY PATENTED INVENTION THAT MAY IN ANY WAY BE RELATED THEREBY.

THIS DOCUMENT HAS BEEN PREPARED BY THE GOVERNMENT AND MAY BE REPRODUCED AND USED IN CONNECTION WITH ANY GOVERNMENT PROCUREMENT OR SALES/LEASE OPERATION.

*FOR INFORMATION ONLY. CONTRACTOR MAY AT HIS OPTION DEVIATE FROM THESE PROCESS DETAILS.

REVISIONS

SYM	DESCRIPTION	DATE	APPROVAL
-----	-------------	------	----------



- NOTES:
- ITEM(4) MUST ROTATE FREELY, AFTER STAKING.
 - ROLLER BORE TO BE LUBRICATED WITH OIL (6) PER SPEC MIL-L-7870 BEFORE ASSY.
 - IN ALL SPLIT BALLOONS TOP FIGURE IS MATERIAL LIST ITEM INDICATOR & BOTTOM FIGURE IS QUANTITY.

SECTION IA-IA-SCALE 2/1

COLLINS PART NO.	ITEM	REQD	PART NO.	DESCRIPTION	MATL	MATL SPEC
005 0116 00	6	AS REQD		OIL		
558 0406 002	5	1	SM-C-249055	RACK - LOW		
558 0180 002	4	2	SM-B-178739	ROLLER		
558 0178 002	3	2	SM-B-178738	SHAFT		
558 0176 002	2	1	SM-B-178723	PIN		
558 0086 002	1	2	SM-B-170822	WASHER		

LIST OF MATERIAL - COLLINS PART NO. 558-0408-002

COLLINS NO.	QTY	NEXT ASSY	USED ON
558-0453-003	3	SM-D-248854, S-D-248775	

DRAWN HENRY
 CHECKED *William*
 APPROVED _____

UNLESS OTHERWISE SPECIFIED:
 DECIMAL DIMENSIONS INCLUDING HOLE SIZES MAY VARY ±.005
 FRACTIONAL DIMENSIONS INCLUDING HOLE SIZES MAY VARY ±1/64
 MACHINED ANGLES MAY VARY ±.1°
 SHEARED ANGLES MAY VARY ±.25°
 BROKEN ANGLES MAY VARY ±.1°
 ECCENTRICITY BETWEEN ANY DIAMETERS ON THE SAME CENTERLINE SHALL NOT EXCEED .010 TOTAL INDICATOR READING.
 ALL DIMENSIONS ARE FINISH DIMENSIONS INCLUDING APPLIED FINISH AND ARE GIVEN IN INCHES.

COLLINS RADIO CO.
 14214 - P.H.
 51-93

SIGNAL CORPS
 REVIEWED PME
 APPROVED HLY
 PME

DATE 22 Dec 55 SCALE 1/1

RACK ASSY-LOW

DEPARTMENT OF THE ARMY
 SIGNAL CORPS ENGINEERING
 LABORATORIES
 FORT MONMOUTH NEW JERSEY

SM-B-249057